

Dec 31, 2020 ~ COVID 19

Charles County Emergency Services
Situation Report #117

SITUATION

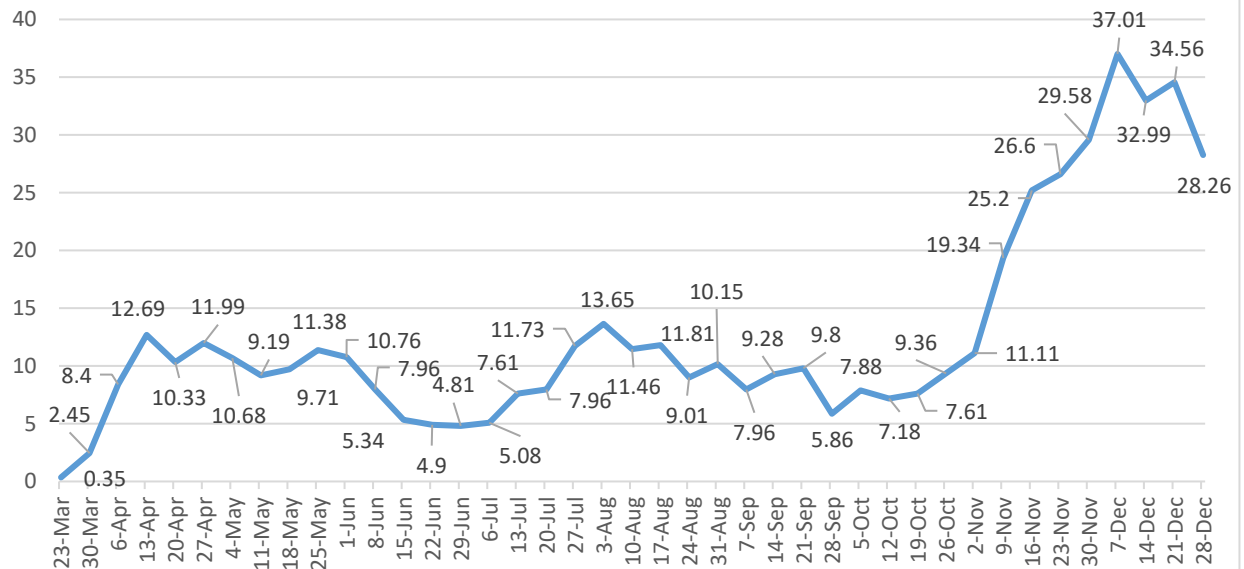
**Situation
Summary:**

Global COVID-19 situation map [here](#)

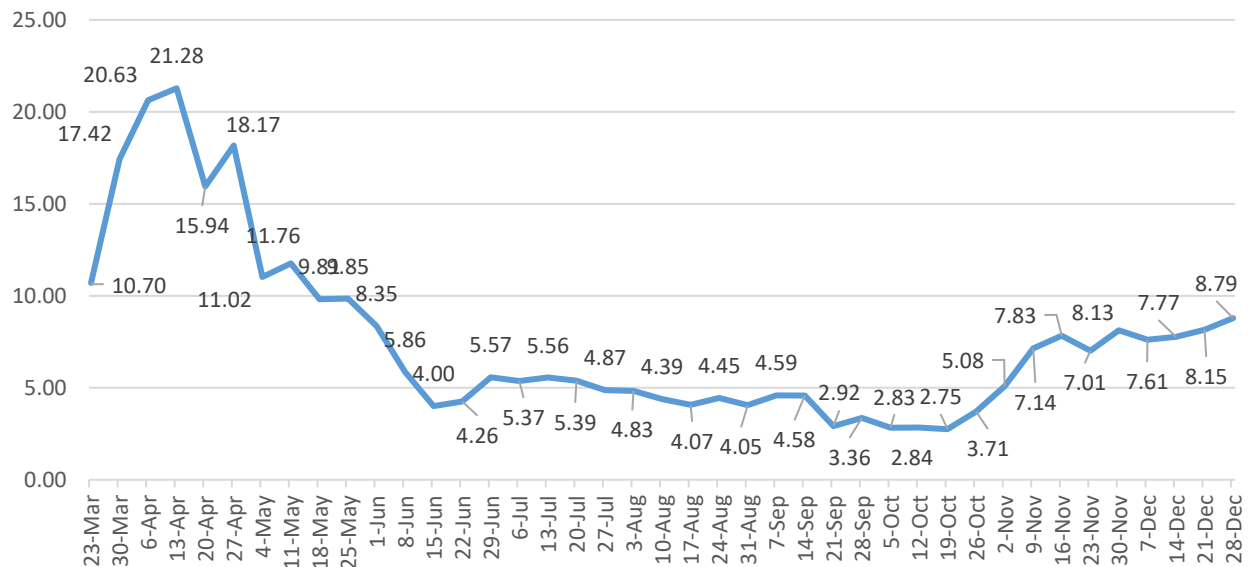
Maryland summary map [here](#)

Week of Dec 28 is showing 6 days of data, all other points reflect 7 days of data.

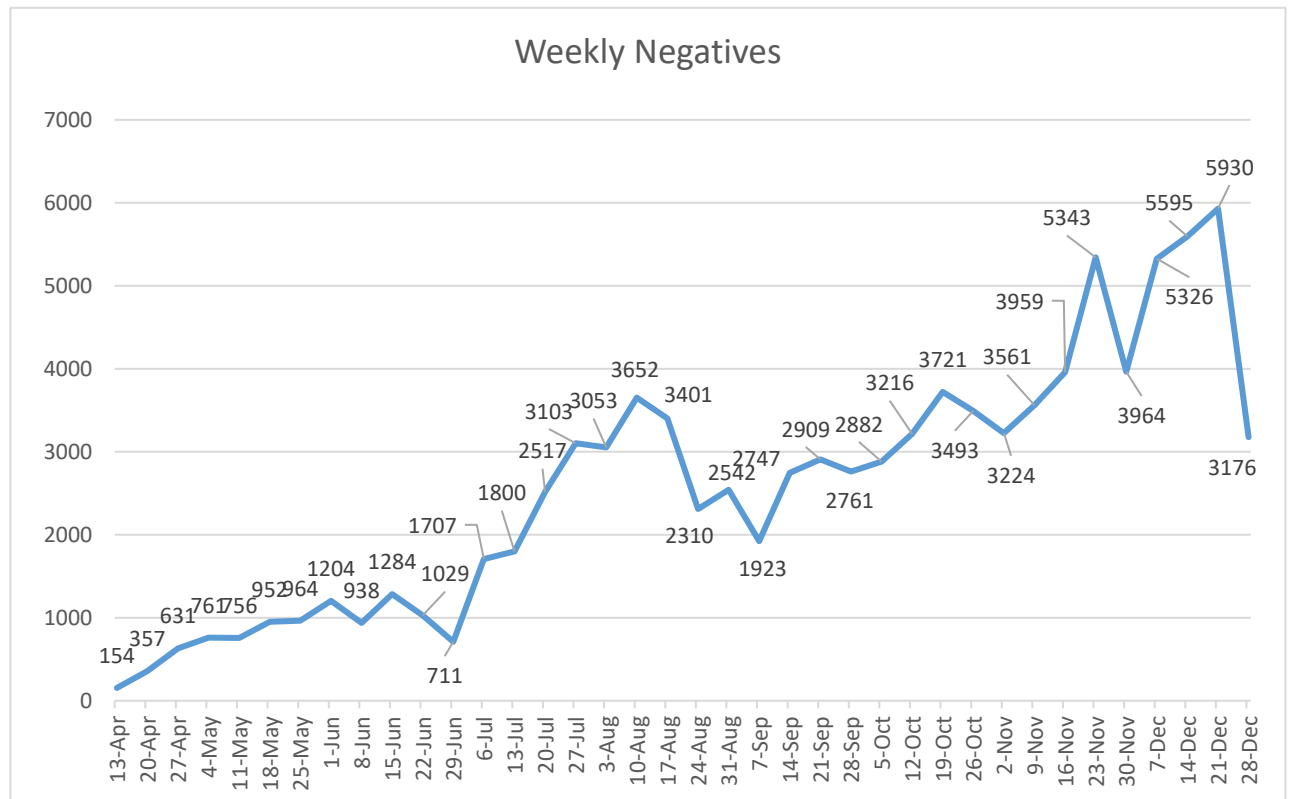
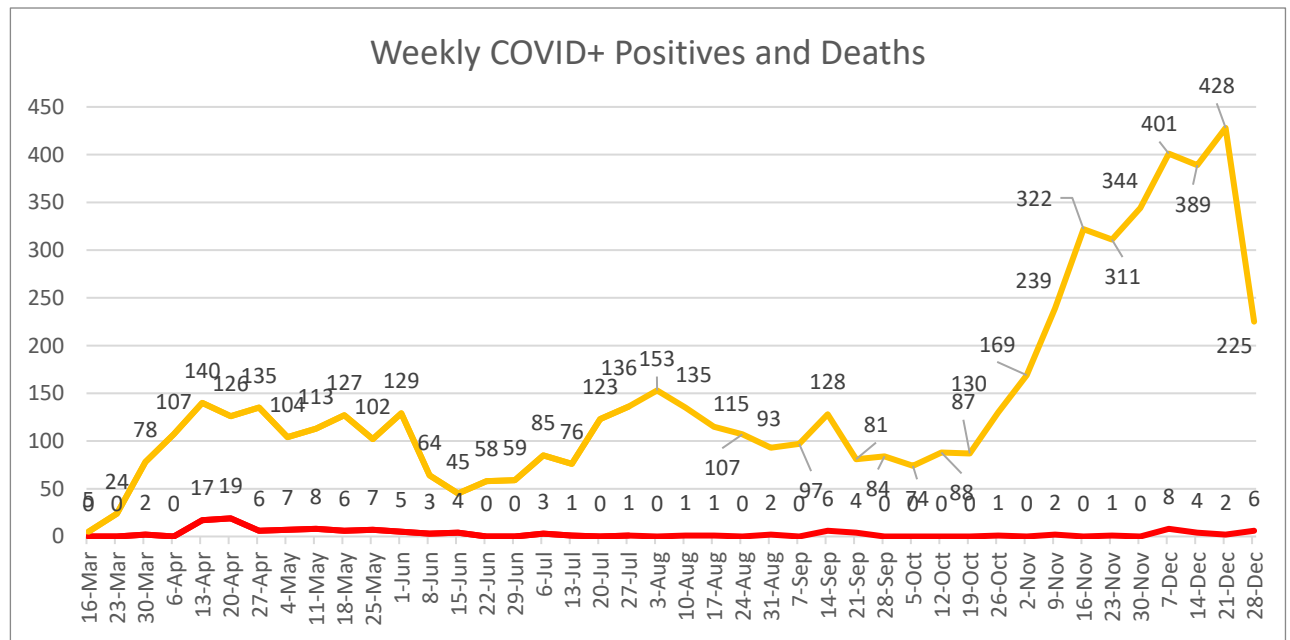
Weekly COVID+ Case Rate



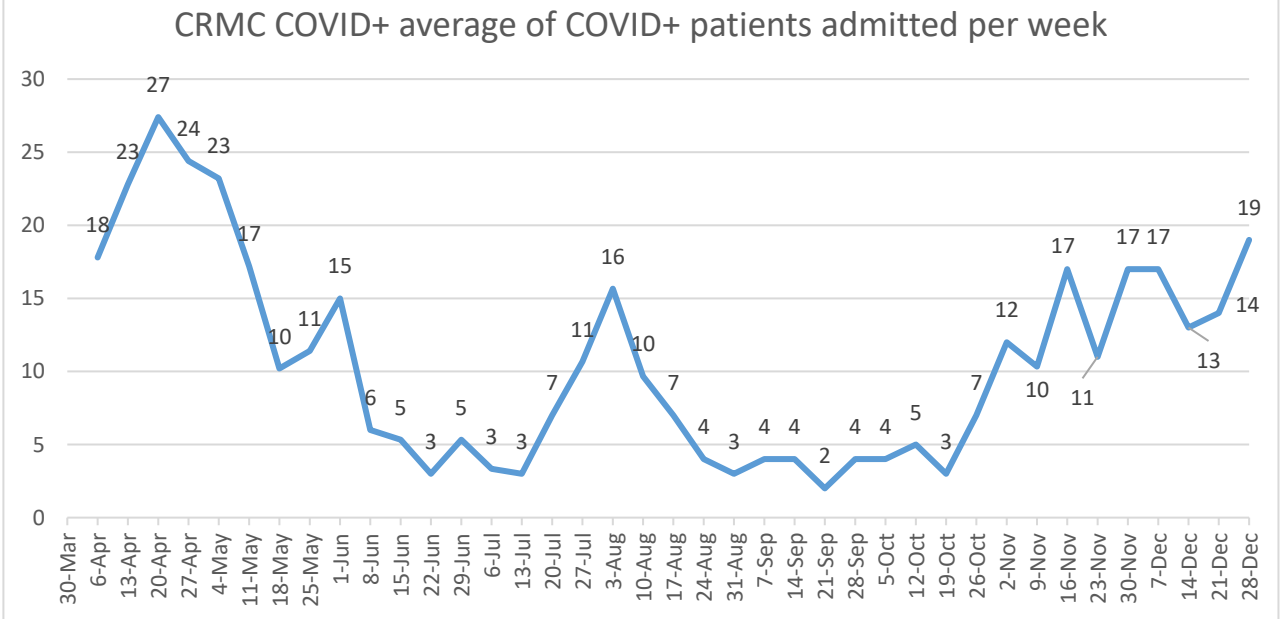
Weekly COVID+ Percentage



Dec 31, 2020 ~ COVID 19



Dec 31, 2020 ~ COVID 19



Charts based upon the data provided by the HD

Charles County Dept of Health Data:

6036 cases total reported since the beginning of the event. **225 new cases since 12/25, 49 new cases in last 24 hours**

Among confirmed cases, 3322 (55.0%) Female; 2714 (45.0%) Male
 Age range of positive COVID-19 cases: 0-103 years
 Average age of confirmed cases: 41.4
 Age Distribution for Charles County cases:
 Under 18 years: 648 (10.7%)
 18-64 years: 4678 (77.5%)
 65+ years: 710 (11.8%)

98,956 negative tests results

7 day average case rate per 100,000 population:

Charles County:	Maryland:
12/23: 32.81	38.03
12/24: 34.56	39.57
12/25: 33.69	39.24
12/26: 31.85	39.43
12/27: 31.59	38.73
12/28: 31.24	38.07
12/29: 28.88	37.01
12/30: 28.26	37.40

7 day average percent positivity rate:

Charles County:	Maryland:
12/23: 8.08%	7.12%

Dec 31, 2020 ~ COVID 19

12/24: 8.15%	7.11%
12/25: 8.22%	7.10%
12/26: 8.44%	7.48%
12/27: 8.60%	7.42%
12/28: 8.47%	8.10%
12/29: 8.52%	8.22%
12/30: 8.79%	8.52%

Total Number of negative lab results: 98,956
Number of negative lab results since 12/23: 5,031
Total testing volume for Charles County (positive and negative): 104,992
Percentage of Charles County residents who have been tested for COVID-19: 37.3%

Total Positivity Rate for all lab results thus far: 5.75%
7 day positivity rate for all lab results: 8.79%

Total Testing Volume per 1000 population by Race:
Maryland: 857.18
Charles County: 678.83
Charles County Asian: 217.13
Charles County African American/Black: 604.17
Charles County Other Race: 672.03
Charles County White/Caucasian: 439.72

Positive Tests per 1000 by Race:
Maryland: 49.01
Charles County: 40.45
Charles County Asian: 14.43
Charles County African Americans: 38.73
Charles County Other: 73.60
Charles County White: 24.42

Average number of days from specimen collection date to reporting to public health for all positive and negative lab results between December 23- December 30: 2.93 days
Average number of days from specimen collection date to reporting to public health for all positive lab results between December 23- December 30: 2.93 days

Data from CovidLink:

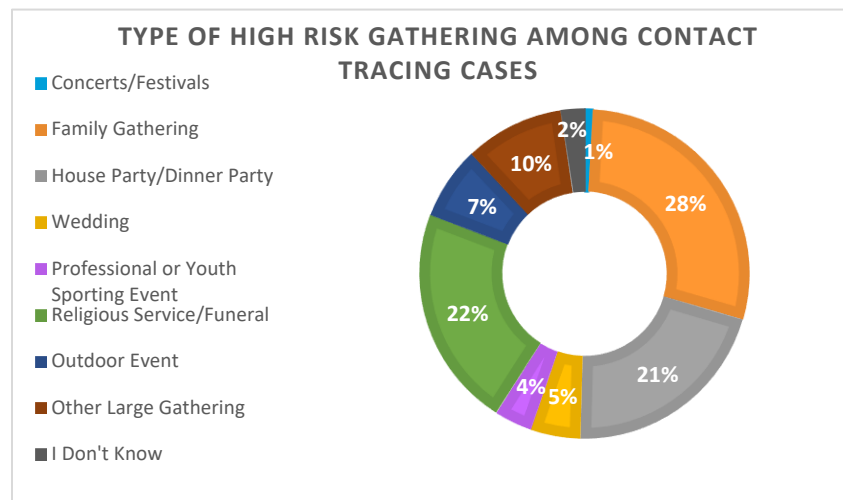
5,158 case records for Charles County in CovidLink to date. This data is a combination of data coming from CRISP, the MDH confirmed cases databases, and the data collected during the contact tracing interview/follow-up process.

Of cases who reported having symptoms (42.9%)*, the most common symptoms were cough, loss of taste and/or smell, headache, and fever.
2,381 cases reported having no COVID-19 symptoms (46.2%)*.

Dec 31, 2020 ~ COVID 19

*4,596 out of 5,158 cases reported whether or not they were experiencing COVID-19 symptoms. Due to this, these percentages will not add up to 100%.

Of the 5,158 case records, 349 reported participating in a high risk gathering. These gatherings included family gatherings, dinner parties/house parties, religious services, weddings and funerals, professional and youth sporting events, concerts/festivals, outdoor events, and other large gatherings. The breakdown of these high-risk gatherings are shown below:



521 required hospitalization*. Hospitalization rate is steadily decreasing. Peak in hospitalization rate coincided with the peak in the skilled nursing facility outbreaks in late April.

*Due to a data reconciliation issue reported by Maryland Department of Health, COVID-19 hospitalization counts were not accurately captured in previous data reports. The number reported above is the accurate number of hospitalizations to date.

123 confirmed deaths, **7 additional deaths since previous report**

There have been 123 confirmed deaths associated with COVID-19. This equates to 2.0% of total confirmed cases. The Charles County death rate of 2.0% is slightly below the MD state average death rate of 2.1%. However, it should be noted that the majority of deaths in Charles County are associated with outbreaks in skilled nursing facilities. The death rate for Charles County is going down from a high of 7.3% now that the outbreaks at skilled nursing facilities have been contained and/or reduced.

There is 1 probable COVID-19 death. COVID-19 is listed as the cause of death, but laboratory testing has not yet been confirmed.

Average age of fatalities: 75.7 years

Age Distribution of Fatalities:

0-39 years: <7 (0.8%) Data is suppressed when the number of cases is less than 7.

- 40-69 years: 33 (26.6%)

- 70-79 years: 47 (37.9%)

- 80+ years: 43 (34.7%)

Gender breakdown among fatalities:

Dec 31, 2020 ~ COVID 19

	66 or 53.2% Female 58 or 46.8% Male Racial breakdown among fatalities: 42.7% Non-Hispanic White 50.0% Non-Hispanic Black 3.2% Non-Hispanic Asian 4.0% Hispanic Location of death: Hospital Inpatient: 80 or 64.5% Nursing Home: 28 or 22.6% Other/Home/Emergency Room/Outpatient: 16 or 12.9%				
	Statewide By Race and Ethnicity is available at https://coronavirus.maryland.gov/ Asian: 65 (1.1%) Black/African American: 2582 (42.8%) White: 1312 (21.7%) Other: 491 (8.1%) American Indian/Alaskan Native: 16 (0.3%) Data not available/Declined to Answer: 1570 (26.0%) Ethnicity: Hispanic: 408 (6.8%) Non-Hispanic: 4433 (73.4%) Data not available/Declined to Answer: 1195 (19.8%)				
	Zip code:	Total number of positive cases	Number of new positive cases since 12/23	Number of new negative labs in last 24 hours	Case Rate per 1000 residents
	20601	1082	74	81	40.98
	20602	1153	74	114	44.21
	20603	1235	76	102	39.33
	20604	15	2	3	NA
	20611	28	0	3	18.24
	20613	66	5	0	4.76
	20616	233	15	34	38.16
	20622	39	1	0	6.19
	20632	24	0	1	NA
	20637	154	12	16	27.10
	20640	353	19	27	35.24
	20645	34	2	3	NA
	20646	705	37	65	33.61
	20658	26	1	5	NA
	20662	95	3	2	31.73

Dec 31, 2020 ~ COVID 19

	<table><tr><td>20664</td><td>76</td><td>3</td><td>9</td><td>21.71</td></tr><tr><td>20675</td><td>42</td><td>1</td><td>3</td><td>19.44</td></tr><tr><td>20677</td><td>76</td><td>6</td><td>8</td><td>29.20</td></tr><tr><td>20693</td><td>36</td><td>0</td><td>2</td><td>NA</td></tr><tr><td>20695</td><td>500</td><td>37</td><td>48</td><td>63.10</td></tr></table> <p>The methodology for case rate calculations by CRISP has changed slightly. Therefore, the case rate calculations by zip code have changed. They cannot be compared to the rates that were previously reported due to differing methodologies.</p> <p>Case Rates for Zip Codes Shared by Charles County and Prince George’s County:</p> <p>20607, Accokeek: 45.93</p> <p>20613, Brandywine: 44.24</p> <p>These are two of the lowest rates in Prince George’s County. These rates are much closer to Waldorf and White Plains case rates.</p> <p>Case rates for other Prince George’s County Zip Codes that are near Charles County:</p> <p>20623, Rosaryville: 42.70</p> <p>20772, Upper Marlboro: 49.70</p> <p>20744, Fort Washington: 49.35</p>	20664	76	3	9	21.71	20675	42	1	3	19.44	20677	76	6	8	29.20	20693	36	0	2	NA	20695	500	37	48	63.10
20664	76	3	9	21.71																						
20675	42	1	3	19.44																						
20677	76	6	8	29.20																						
20693	36	0	2	NA																						
20695	500	37	48	63.10																						
Charles County Dept of Health Testing Update:	<p>Tuesday, 12/29: Regency Stadium / NP Swab / Appt only / 4 lanes / 317 tested</p> <p>Testing continues every Tuesday at Regency Stadium from 0900 – 1300</p> <p>The additional testing day at the stadium will be every other Thursday instead of Saturday. This is scheduled to start the week of January 11. Testing days/times and appointments can be found/made at: covidtest.maryland.gov</p> <p>The lab continued to post results within 48-72 hours of testing for the week</p> <p>Number of agencies self-testing (self swabs) that receive kits from the HD = 7</p> <p>Total testing at these agencies for the period 12/21-23 = 161</p> <p><i>Correction:</i> the testing team goes to <i>Fuller House</i>, not Jude House, then to the Thunderbird Motel on Mondays</p>																									
Charles County Dept of Health COVID-19 Vaccination Update:	<p>First Responders are scheduled to receive the 1st dose of the COVID-19 vaccine on Wednesday, January 6 and Wednesday, January 13</p> <p>An appointment link is created for each specific day/date that a vaccination clinic will be held – it is not an open-ended link</p> <p>Vaccination of First Responders will take place at Regency Stadium from 0900-1300 and 1400-1800 on Wednesday, January 6 and Wednesday, January 13</p> <p>Second doses will be administered 4 weeks after receiving the first dose. You will need to make an appointment to receive the second dose. Keep posted for info regarding when the link to schedule will be available. Please note your second dose date now ‘on your calendar’.</p>																									

Dec 31, 2020 ~ COVID 19

FIRST DOSE

Wednesday, January 6
Wednesday, January 13

SECOND DOSE

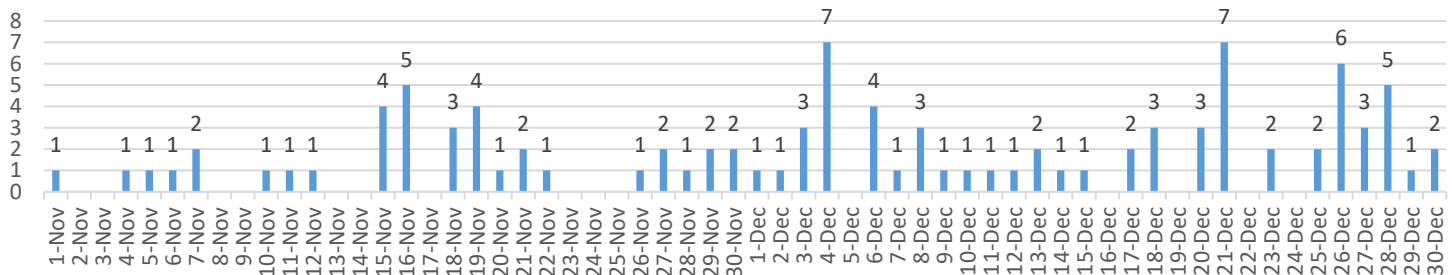
Wednesday, February 3
Wednesday, February 10

The second phase of COVID-19 vaccinations are being scheduled for doctors/staff and other medical providers.

If you have any questions related to COVID-19, contact the hotline: 301.609.6717

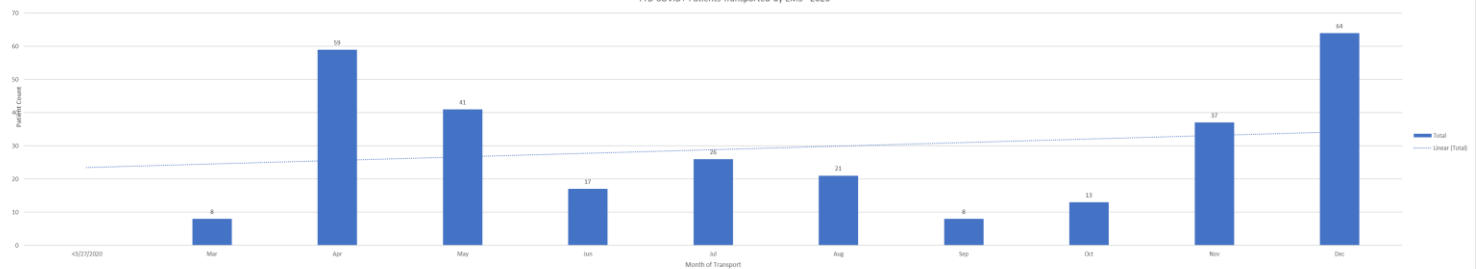
Total COVID+ transported by Career & Volunteer EMS:

Nov 1 to Dec 30 COVID+ Patients Transported by EMS



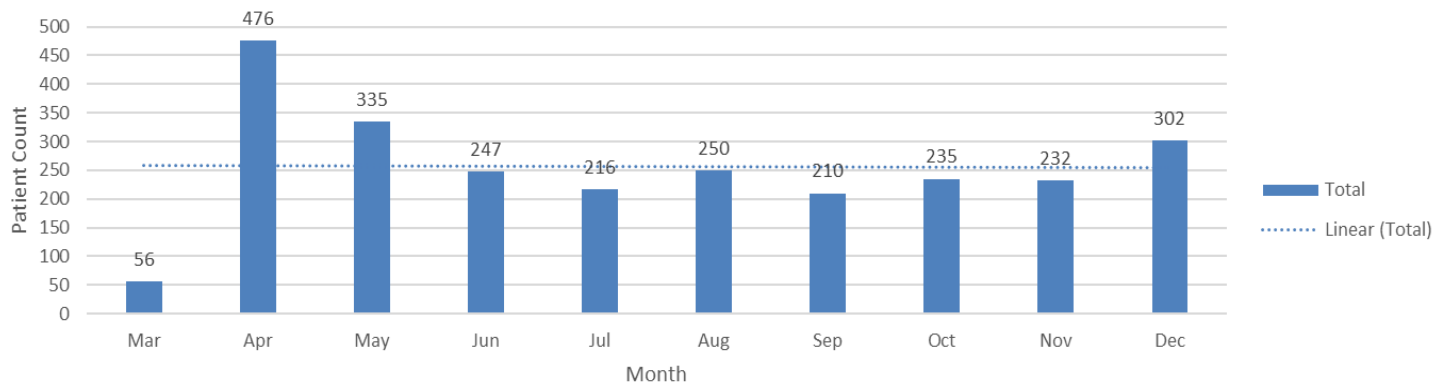
Count of Patient Name:

YTD COVID+ Patients Transported by EMS - 2020



PUI = Person Under Investigation

PUI Incidents - 03-13-20 thru 12-30-20 @ 0930



Dec 31, 2020 ~ COVID 19

First Responders Quarantine/ Isolation	<p>Quarantine means exposed and they can't come to work. Self Isolation means sick or tested positive.</p> <p>DES Admin: 1 Quarantine +1 since previous report 0 Isolation</p> <p>Fire/EMS: 0 Quarantine: means exposed and they can't come to work -2 since previous report 1 Isolation: means sick or tested positive no change since previous report</p> <p>Animal Control: 1 – Quarantined -1 since previous report 1 – isolated -2 since previous report</p> <p>Communications: 3 quarantined no change since previous report 0 isolation -2 since previous report</p> <p>Law Enforcement (includes CCSO dispatchers):- NO REPORT 12/31 Quarantine: 1 Isolation:1</p>
DES HazMat Team Decons	<p><i>None to report since before Christmas</i></p>
Volunteer Fire, Career & Volunteer EMS	<p><u>Stations/Apparatus:</u></p> <ul style="list-style-type: none"> - No Station with any contamination issues. - No Apparatus with any contamination issues. <p><u>Personnel Exposure:</u> 1 - Hospitalized</p> <p><u>Incidents/Call Volume:</u></p> <ul style="list-style-type: none"> - No Major Incidents to Report related to COVID-19. - Call volume for Fire is average and EMS has been above average. - Transports of COVID Positive Patients remain average from previous weeks. <p><u>Other Information:</u></p> <ul style="list-style-type: none"> - Continue to push out information about Social Distancing and wearing a mask when unable to do so in the Stations. - All personnel need to continue to utilize proper PPE on incidents. - If Departments are having issues with getting PPE from their Vendors, please send a 213 Form to deslogistics@charlescountymd.gov.

Dec 31, 2020 ~ COVID 19

	<ul style="list-style-type: none">- We want to wish everyone a Safe and Happy New Year.
Charles Regional Medical Center:	<ul style="list-style-type: none">• Hospital Bed Capacity = 166. Census = 84• Hospital COVID Positive Weekly Average Census = 19.75• PUI admissions = 1• ICU Census = 10• Hospital ICU is now a dedicated COVID-19 Unit, and 3 East is for regular ICU overflow and has 10 beds.• A section of the 3 South Patient Care unit has been modified to be dedicated to COVID-19 positive patients only.• Isolation Room Capacity = 12• Isolation Rooms Occupied = 8• Ventilated COVID-19 positive patients = 1• Ventilators not in use = 19• EMS staff transported to CRMC 12/30/2020 = Two (2) Covid positive patients, and Zero (0) PUI's.
Law Enforcement	No report today 12/31/2020