

Accessible Location

An easy drive from most Mid-Atlantic locations, we invite you to wander off the beaten path and explore the countryside where legends continue to come alive! We are prepared to receive your group and assist with creating a memorable experience in Charles County, MD.

DISTANCE FROM

- WASHINGTON, D.C. . . . 30 MI
- BALTIMORE, MD 60 MI
- RICHMOND, VA. 75 MI
- HARRISBURG, PA 150 MI
- NEW YORK, NY 240 MI
- COLUMBUS, OH 450 MI



Charles County
MARYLAND

Legends, Lore and Room to Explore

Explore
Group Tours

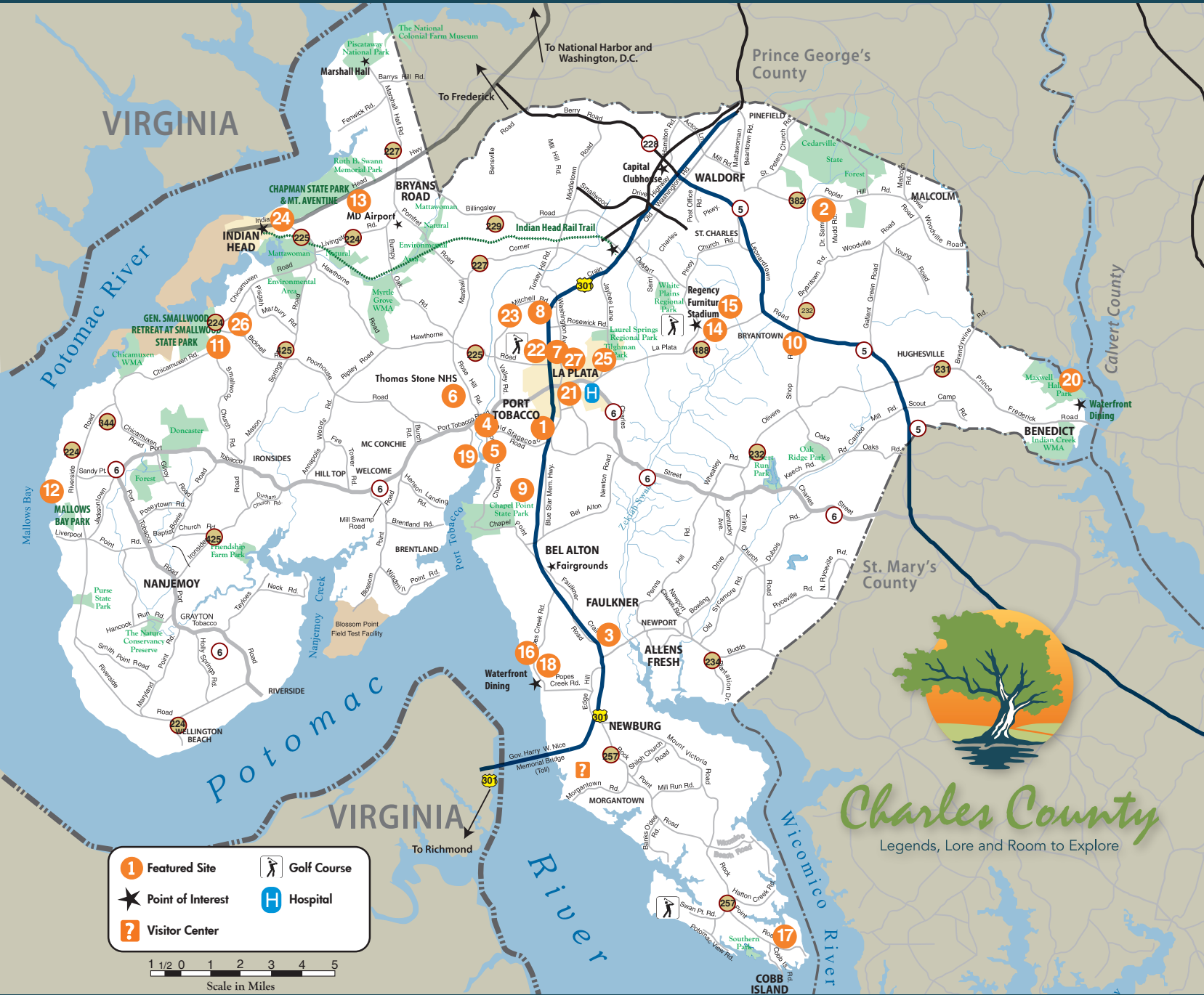


Photo By Don Shomette

CRAIN MEMORIAL WELCOME CENTER
12480 Crain Highway, Newburg | 301-259-2500 | 800-766-3386
Open daily from 8:30 a.m.-4:30 p.m. When traveling Route 301, be sure to stop in for a break! Ask for a copy of the many state-wide publications including maps, attractions, travel guides, calendars of events, and more.

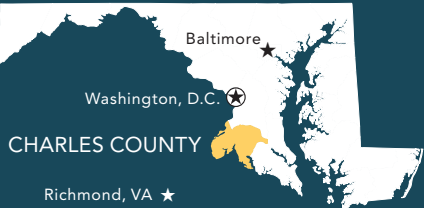
ExploreCharlesCounty.com

ExploreCharlesCounty @ExploreCharlesC

Charles County Dept. of Recreation, Parks, and Tourism
8190 Port Tobacco Road, Port Tobacco, MD 20677 • 301-932-3470
MD Relay Service: 7-1-1 • Equal Opportunity Employer



Columbus, OH ★ New York, NY ★
Harrisburg, PA ★



Legendary Itineraries!

Pick your themes and interests and we'll help you create a custom itinerary for your group of 10 to 55. Ask us about our Southern Maryland by-ways and Heritage Trails. Charles County has guided group kayaking, art galleries, cuisine from around the world, and historic site tour guides, so much to explore. We collaborate with neighboring area DMOs and attractions to enrich your group tour experience.

ExploreCharlesCounty.com

LEGENDS



Less than 30 miles from the Nation's Capital... CHARLES COUNTY RETAINS ITS NATURAL BEAUTY IN ONE OF THE FASTEST GROWING AREAS IN MARYLAND.

We have 21,000 acres of parkland located within our borders, where visitors are invited to explore and experience nature up close. Charles County offers one of the most scenic byways in Maryland – the Religious Freedom National Scenic Byway and includes historic sites along the way. Nationally known as a world-class year-round bass fishery, the Potomac River stretches along the western and south western side of the county for more than 55 miles.

Rich in History!

Step back in time and visit **Port Tobacco Historic Village** settled in the 17th century. Bring the entire group and learn about the facts and legends of this quaint village along the picturesque Port Tobacco River. Call for a special tour featuring a portrayal of Olivia Floyd or Mary Surratt.

Mallows Bay, newly designated National Marine Sanctuary located near the Potomac River, is home to the largest ship graveyard in the Western Hemisphere. The area offers unique archaeological, recreational, historical, cultural, educational, and environmental opportunities for group travelers. The site includes historic vessels dating back to the Revolutionary War, remains of the largest 'Ghost Fleet' of the World War I steamships, wildlife viewing areas, fishing, boating access, and a hiking trail.

Visit the **Thomas Stone National Historic Site**; which was originally home to the man who wrote himself into American history after signing the Declaration of Independence. Take part in a ranger led tour or attend one of several annual events.

Travel Maryland's **Civil War Trail "John Wilkes Booth... Escape of an Assassin,"** and retrace

the villain's escape in Charles County. Tour the Dr. Samuel A. Mudd House and Museum, follow the rest of the escape to Rich Hill Farm, the pine thicket, Zekiah Swamp, and end the trail at Popes Creek and enjoy famous seafood and one of the two waterfront dining establishments.

The **Bryantown Historic District** was bustling with federal troops searching for John Wilkes Booth after assassinating President Abraham Lincoln. View the site where the Old Bryantown Tavern resided and visit St. Mary's Catholic Church the final resting place for Dr. Samuel A. Mudd.

During the War of 1812, 4,500 British troops came ashore in **Benedict** on their way to Washington, D.C. Visit the quaint town, and dine at Ray's Pier on the Patuxent River.

Explore the **James E. Richmond Science Center** ¹⁴ (www.ccBOE.com/sciencecenter, 301-934-7464). The science center includes a state-of-the-art 60-foot diameter, 184-seat Digital Dome Classroom, a 6-foot diameter NOAA Science On a Sphere®, and an experiential learning center, or Discovery Lab. Current show listings and tickets are on sale at JERScienceCenter.

MUSEUMS

- 1 African American Heritage Society of Charles County**
301-843-2150
- 2 Dr. Samuel A. Mudd House**
DrMudd.org | 301-645-6870 | 301-274-9358
- 3 Maryland Veterans Museum at Patriot Park**
mdvets.cc | 301-932-1900
- 4 Port Tobacco One-Room School House**
301-934-9483
- 5 Port Tobacco Historic Village**
ExploreCharlesCounty.com
301-392-3418
- 6 Thomas Stone National Historic Site**
NPS.gov/thst | 301-392-1776

CHURCHES

- 7 Christ Church Port Tobacco**
ChristChurchLaPlata.org
301-392-1051
- 8 Mount Carmel Monastery**
CarmelofPortTobacco.com
301-934-1654
- 9 St. Ignatius Church & St. Thomas Manor**
ChapelPoint.org | 301-934-8245
- 10 St. Mary's Church & Cemetery**
StMarysBryantown.com
301-870-2220

PARKS

- 11 General Smallwood Retreat House at Smallwood State Park**
dnr.Maryland.gov | 301-743-7613
- 12 Mallows Bay Park**
CharlesCountyParks.com
301-932-3470
- 13 Mount Aventine at Chapman State Park**
dnr.Maryland.gov | 301-743-7613

LORE



Southern Maryland Bluecrabs Baseball

- 15 Regency Furniture Stadium**
sombbluecrabs.com | 301-638-9788

Whether it is a company outing, birthday party, church picnic, or class reunion, **Regency Furniture Stadium** has a wide range of options for groups of 20 or more that want to have an extraordinary experience at an affordable price. Offering fantastic options such as our exclusive climate controlled Legends Club, the Picnic Pavilion, where your guests could catch a home run ball, and our luxurious upscale suites where you are sure to have a great time and get a spectacular view!

Unique Dining

Explore our many seafood and crab houses specializing in locally harvested fish, crabs, and oysters!

- 16 Captain Billy's Crab House** (Popes Creek)
CaptBillys.com | 301-932-4323
- 17 Captain Johns Crab House** (Cobb Island)
CJCrab.com | 301-259-2315
- 18 Gilligan's Pier** (Popes Creek)
GilligansPier.com | 301-259-4514
- 19 Port Tobacco Restaurant** (Port Tobacco)
PTMRestaurant.com | 301-392-0007
- 20 Rays Pier** (Benedict)
Facebook: Ray's Pier | 301-274-3733
- 21 The Charles** (La Plata)
TheCharlesLP.com | 301-392-5116
- 22 Galazio's** (La Plata)
Facebook: Galazio Restaurant | 301-392-9500



Explore the Arts

The local theater groups are dedicated to experience **quality theater** in Southern Maryland. Many live music venues featuring talented, homegrown artists call Explore Charles County home. Relax and enjoy the music of special events like the La Plata Summer Concert Series and Bluegrass Concerts at the American Legion. If visual arts are more your style visit any or all of the our galleries and theaters.

- 23 College of Southern Maryland Fine Arts**
CSMD.edu/arts | 301-934-7828
- 24 Indian Head Center for the Arts**
IndianHeadBlackBox.org | 301-743-3040
- 25 Port Tobacco Players**
PTPlayers.com | 301-934-6813
- 26 Mattawoman Creek Art Center**
MattawomanArt.org 301-743-5159
- 27 Shop 53 Tattoo and Art Studio**
Shop53TattooStudio.com | 240-349-2932



DISCOVER MORE: ExploreCharlesCounty.com