

Charles County COVID-19

Incident Action Plan



Operational Period

From To
4/18/20 4/21/20
8:00 - 8:00



LPHS delivering
to Food Bank

INCIDENT OBJECTIVES (ICS 202)

1. Incident Name Charles County COVID-19	2. Operational Period	Date From: 4/18/20	Date To 4/21/20	Time From: 8:00 Time To: 8:00
3. Objectives				
A. Ensure the safety and overall health and well-being, including mental health of the residents, county employees, and responders, throughout this incident.				
B. Conduct surveillance of COVID-19 cases in collaboration with the health department, hospital, physicians, and other health care providers.				
C. Maintain timely, accurate and uniform communications with residents, employees and first responders as well as partners in the tri-County and National Capital Region and the state of Maryland.				
D. Prepare for and handle the human reaction crisis contingencies in long terms.				
E. Prepare for long term order maintenance.				
F. Prepare for and sustain our communities' hierarchy of needs throughout this incident.				
G. Determine trigger points for Continuity of Operations for all agencies, including government, public safety, schools, hospital, and other critical infrastructure systems.				
H. Ensure all practical steps to "Slow the Spread" of transmission of COVID-19.				
4. Operational Period Command Emphasis				
Use the recommended PPE on all calls, take all the necessary precautions. PPE recommendations need to be followed 100% especially in nursing homes, and areas with groups of non-ambulatory patients.				
General Situational Awareness				
"Wash your hands before touching your face. Do not touch the T-zone!"				
5. Site Safety Plan Required? <input type="checkbox"/> Yes <input checked="" type="checkbox"/> No Approved Site Safety Plan(s) Located at:				
6. Attachments (check if attached)				
<input checked="" type="checkbox"/> ICS 203 <input type="checkbox"/> ICS 207	<input checked="" type="checkbox"/>	ICS 214		
<input type="checkbox"/> ICS 204 <input checked="" type="checkbox"/> ICS 208	<input type="checkbox"/>	_____		
<input type="checkbox"/> ICS 205 <input type="checkbox"/> Map/Chart	<input type="checkbox"/>	_____		
<input checked="" type="checkbox"/> ICS 205A <input type="checkbox"/> Weather	<input type="checkbox"/>	_____		
<input type="checkbox"/> ICS 206 <input type="checkbox"/> Forecast/Tides/Currents	<input type="checkbox"/>	_____		
7. Prepared by: Name: <u>Joe Hoffmaster</u> Position/Title: <u>PSC</u> Signature: _____				
8. Approved by Incident Commander: Name: <u>Michelle Lilly</u> Signature: _____				
ICS 202	IAP Page <u>2</u>	Date/Time: <u>April 17, 2020 @15:00</u>		

ORGANIZATION ASSIGNMENT LIST (ICS 203)

1. Incident Name		2. Operational Period	
Charles County COVID-19		Date From: 4/18/20 Date to: 4/21/20 Time From: 8:00 Time to: 8:00	
3. Incident Commander and Staff		7. Operations Section	
UC	Dr. Lowry	Chief	
UC	Michelle Lilly	Deputy	
Deputy	Melanie Gardner		
Deputy	Tony Rose		
Safety Officer	John Filer	a. Branch I	Public Health
Public Information Office	Jennifer Harris Donna Fuqua	Branch Director	Ranston Harvey
Intell Officer	Jason Stoddard	Deputy	Mary Lilly
4. Agency Representative		DSS	
		Liaison Officer	Raena Barnes Robbie Jones
Agency	Name	Hospital	Bill Grimes John Filer
Intell officer Deputy	Mike Meiser	Nursing Homes	need to fill
Lifestyles	Sandy Washington	Health Care Providers	need to fill
Public Schools	Mike Meiser	Rehab Centers	need to fill
		Assisted Living	need to fill
		Funeral Services	
		b. Branch II	Public Safety
		Branch Director	Mark Kaufmann Jr.
		Deputy	Scott Herbert D J Mills
		DES EMS	Steve Finch
		Vol EMS	Andrew Spalding Mitchell Lewis
		Vol Fire	Scott Herbert
		Logistics	Scott Herbert
5. Planning Section		c. Branch III	Law Enforcement
Chief	Joe Hoffmaster	Branch Director	Chris Schmidt
Deputy	Bill Smith	Deputy	Cari Baker
Resource Unit		La Plata Police	Chris Becker
Situation Unit	need to fill	MD State Police	Thomas Quade
Documentation Unit	need to fill	DNR	Catherine Meddelin
Demobilization Unit		MdTA	Brian Lawrence
Human Resources			
Technical Specialists	(name / specialty)	d. Branch IV	Infrastructure
		Branch Director	
		Deputy	
		SMECO	Jennifer Raley
		Grocery	
6. Logistics Section		Propane	
Chief	Nick Ellis	Natural Gas	
Deputy	Lori Cherry		
Support Branch			
Donations	Ed Tucker		
Supply Unit			
Facilities Unit	Nick Ellis	10. Finance Section	
Ground Support Unit		Chief	Jennifer Adams
Service Branch		Deputy	
Service Branch Dir.		Time Unit	
Communications Unit		Procurement Unit	
Medical Unit		Comp/Claims Unit	
Security Unit		Cost Unit	
Food Unit			
9. Prepared by: Name: Joe Hoffmaster Position/Title: PSC Signature			
ICS 203	IAP Page 3	Date/Time: April 17, 2020 @ 15:00	

ORGANIZATION ASSIGNMENT LIST (ICS 203)

1. Incident Name		2. Operational Period	
Charles County COVID-19		Date From: 4/18/20 Time From: 8:00	Date to: 4/21/20 Time to: 8:00
3. Incident Commander and Staff		7. Operations Section	
UC	Dr. Lowry	Chief	
UC	Michelle Lilly	Deputy	
Deputy	Melanie Gardner		
Deputy	Tony Rose		
Safety Officer	John Filer	a. Branch V	Governance
Public Information Officer	Jennifer Harris Donna Fuqua		
Intell Officer	Jason Stoddard		
4. Agency Representative		Charles County Govern.	Michele Lilly
Agency	Name	Town of LaPlata	Chris Becker
Intell officer Deputy	Mike Meiser	Town of Indian Head	Ryan Hicks
Lifestyles	Sandy Washington		
CC Public Schools	Michael Meiser		
		b. Branch VI	Business
		Branch Director	Darre'll Brown
		Deputy	Marcia Keeth
		Economic Development	Darre'll Brown
		Chamber of Commerce	Bonnie Grady
5. Planning Section		c. Branch VII	
Chief	Joe Hoffmaster	Branch Director	
Deputy	Bill Smith	Deputy	
Resource Unit			
Situation Unit	need to fill		
Documentation Unit	need to fill		
Demobilization Unit			
Human Resources			
Technical Specialists	(name / specialty)	d. Branch VIII	
		Branch Director	
		Deputy	
6. Logistics Section			
Chief	Nick Ellis		
Deputy	Lori Cherry	e. Branch IX	
Support Branch			
Donations	Ed Tucker		
Supply Unit			
Facilities Unit	Nick Ellis	10. Finance Section	
Ground Support Unit		Chief	Jen Adams
Service Branch		Deputy	need to fill
Service Branch Dir.		Time Unit	
Communications Unit		Procurement Unit	
Medical Unit		Comp/Claims Unit	
Security Unit		Cost Unit	
Food Unit			
9. Prepared by: Name: <u>Joe Hoffmaster</u>		Position/Title: <u>PSC</u> Signature _____	
ICS 203	IAP Page <u>4</u>	Date/Time: <u>April 17, 2020 @ 15:00</u>	

SAFETY MESSAGE/PLAN (ICS 208)

1. Incident Name Charles County COVID-19	2. Operational Period Date From: 4/18/20 Time From: 8:00	Date To: 4/21/20 Time To: 8:00
3. Safety Message/Expanded Safety Message, Safety Plan, Site Safety Plan:		
"Wash your hands before touching your face. Do not touch the T-zone!"		
1. Total identified PUI's transported to date: 309 Total # of patients testing positive : 55		
2. PPE stockpiles remain stable with an estimated supply range of 10+ days based on current call volumes.		
3. Revision to EMSOP Special Order 2020-01 Version 3.1 has been completed and disseminated to staff.		
4. As this is a rapidly changing landscape, leaders should review any changes with their personnel each morning.		
5. With the implementation of the most recent update of special Order 2020-01 V 3.1, personnel should continue to perform wellness checks twice a day as prescribed in the SO as well as decon apparatus frequently.		
6. Personnel who report having a fever, sore throat, cough or other respiratory related symptoms should stay at home and self-isolate until they are symptom free for a period of 72 hours.		
7. The County's Peer Support Team has been activated and will make weekly wellness checks with our County's first responders. We are working through the logisitcs but will provide an email address and phone number to contact the team. Will diseminate when we have the contact information.		
8. Please remember that PPE caches are for EVERYONE. We are all in this TOGETHER so there is NO career and volunteer PPE caches.		
9. Under the approval of the EOC and to keep congruent with the CDC and Governor Hogan's recommendations, Safety has approved the use of simple face masks (commercial or crafted) in the public arena. Per SOP, N95's are to be used for all patient contacts with reuse guidelines in place per the CDC recommendations.		
10. Two new videos posted on You Tube: PPE Best Practices - https://youtu.be/mY4rvyJDxDk and Peer Support Services - https://youtu.be/jZD1EOon7Sw		

Site Safety Plan(s) Located At: <input type="checkbox"/> Yes <input checked="" type="checkbox"/> No			
5. Prepared by: Name: <u>John Filer</u> Title: <u>Safety Officer</u> Signature: _____			
<table border="1" style="width: 100%; border-collapse: collapse;"> <tr> <td style="width: 25%;">ICS 208</td> <td style="width: 25%;">IAP Page _____</td> <td style="width: 50%;">Date/Time: <u>April 17, 2020</u> @ <u>15:00</u></td> </tr> </table>	ICS 208	IAP Page _____	Date/Time: <u>April 17, 2020</u> @ <u>15:00</u>
ICS 208	IAP Page _____	Date/Time: <u>April 17, 2020</u> @ <u>15:00</u>	

ACTIVITY LOG (ICS 214)

1. Incident Name Charles County COVID-19		2. Operational Period		Date From 4/18/2020	Date To: 4/21/2020
				Time From: 8:00	Time To: 8:00
3. Name:		4. ICS Position		5. Home Agency (and Unit):	
6. Resources Assigned					
Name		ICS Position		Home Agency (and Unit)	
7. Activity Log					
Date/Time		Notable Activities			
8. Prepared by: Name: _____ Position/Title: _____ Signature: _____					
ICS 214, Page 1		Date/Time: _____			

ACTIVITY LOG (ICS 214)

[illegible]



Safety Officer's Report Charles County EOC

04-17-20

John Filer
Chief of EMS and SOD
Charles County Department of
Emergency Services

Today's Safety Message: "Wash your hands before touching your face.
Do not touch the T-zone!"

Total number of PUI's transported to date: 309

Total number of first responders on self-isolation: 4

Total number of first responders on quarantine: 29

Total number of patients transported by EMS testing + for COVID: 55

Total number of first responders out for COVID related mental health: 2

Daily Estimated PPE Burn Rate: 30 sets/day



10425 Audie Lane
La Plata, MD 20646



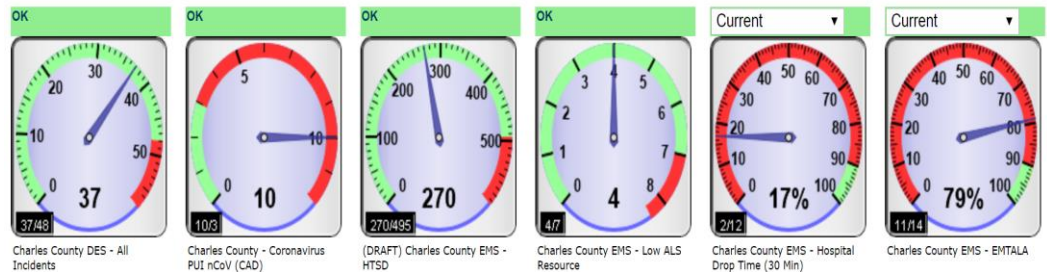
301-399-1143



DESsafety@charlescountymd.gov



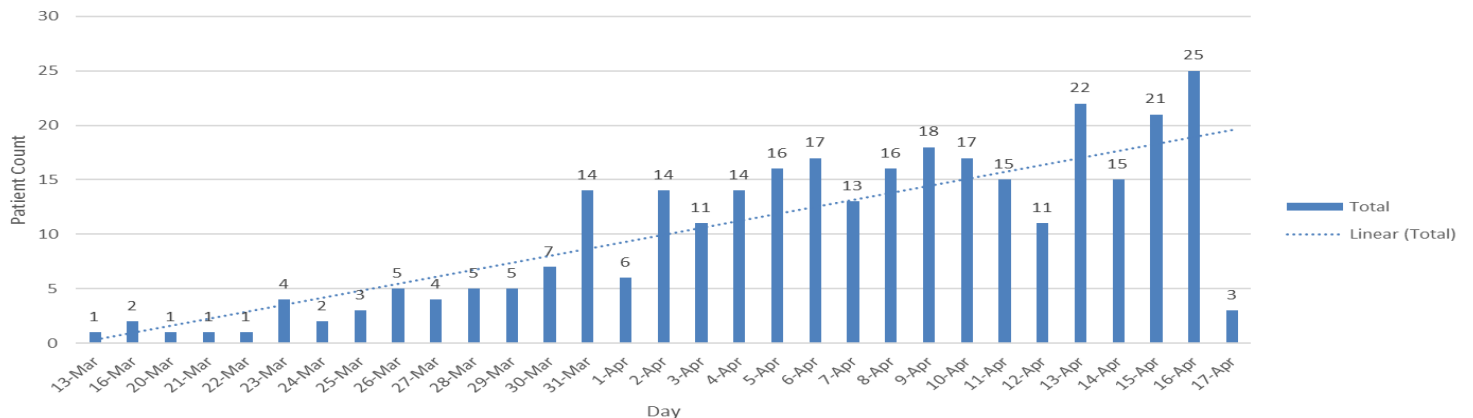
www.charlescountymd.gov



ePCR

Count of Incident Number

PUI Incidents - 03-13-20 thru 04-17-20 @ 1018



Sent to Queue



**Only YOU
can prevent the flu!!**



**Do NOT touch the
Tzone!**

mucous membranes
of your eyes, nose or mouth

henrythehand.com

Wash Your Hands Before Touching Your Face.



PUBLIC HEALTH BRANCH BRIEFING COVID-19 PANDEMIC RESPONSE

April 17, 2020

GENERAL REPORTING INFORMATION

INFECTIOUS DISEASE

CASE COUNT—CHARLES COUNTY

As of 4/17/2020, total case count for Charles County is 345.

- *The line list with confirmed case counts for Charles County is continuously updated as lab reports are received from MDH, hospitals, and commercial laboratories.*
- *Contact tracing efforts are continuous with a focus on healthcare workers, EMS, and police.*

CALL CENTER UPDATE

- Operation time: 0800 to 2200.
- The numbers to call remain the same: 301.609.6717 or 301.609.6777
- Volume for new system is approximately 60 call per day.

MEDIA, SOCIAL MEDIA AND WEBSITE

- Nothing new to report.

PARTNER/STAKEHOLDER OUTREACH

ALL-PARTNER

- The all-partner call was held yesterday at 4 p.m.

LTC/AL

- The Long-Term Care and Assisted Living call was held yesterday, April 17, 2020, at 3 p.m. The primary topic of discussion was PPE conservation and safety strategies.
- The CCDOH is currently working with 2 LTCs and 1 AL that have positive COVID cases to support resource requests, review laboratory reports, review line listings, and to answer questions as necessary. Some private laboratory reports are not received by the department until after 1700.

EPI SURVEILLANCE PROFILE FOR STATE

Case Investigation, Surveillance, and Infectious Disease Response (D, Blythe)

- 1) Latest case counts - total: 11,572 – (50,437 negative)
- 2) New cases 788
 - a) Age distribution:
 - i) under 18 years - 2%
 - ii) in 18-64 age range 75%
 - iii) in 65+ age range 23%
 - b) Geographic distribution
 - i) National Capital 53%
 - ii) Baltimore Metro area 41%
 - iii) Eastern Shore 3%

- iv) Southern 2%
- v) Western 1%
- c) Of cases, 54% female; 46%
- d) Of cases in 65+
- e) Hospitalizations 161 new; total 2612
- f) Deaths new 33; total -- 425
- g) 736 -- Released from Isolation

CONFIDENTIAL – (INFORMATION BELOW IS FOR CORE PLANNING GROUP ONLY)

RESOURCE DISTRIBUTION

- 3 orders received 4/16/2020
- 3 orders fulfilled and facilities contacted
- 1 – Priority 2 (Urgent care facilities, Federally Qualified Healthcare Centers, Primary Care Providers, Local Health Department (direct care/contact only)
- 1 - Priority 3 (Congregate homes, Jails/Prisons, Developmental Disabilities Administration facilities)
- 1 – Priority 4 (other first responders, such as police, fire departments, and public safety)

VOLUNTEERS

MARYLAND MEDICAL RESERVE CORPS

- 2 responders accepted into unit 04/15/2020
- State MRC Coordinator received necessary approval to expand the call out for nurses. A state-level message went out this morning supporting this effort. Also, the call out went to MRC members in St Mary's and Calvert counties.

TESTING

VEIP TESTING SITE UPDATE

- Tested to Date as of 4/17/20 (TTD): 278
- Appointments will be increased to 100 for Tuesday, April 21

EPIDEMIOLOGY AND SURVEILLANCE

Charles County

- As of 4/17 at 930 am, total case count for Charles County was 345 cases.
- There have been 18 deaths associated with COVID-19 (5.2%).
- Average age of fatalities: 78 years, 67% had known underlying health conditions
- Number of negative lab results: 1727
- Positivity rate: 16.7%
- Recovered and released from isolation: 27
- Partially recovered with improved symptoms: 7
- 25% hospitalization
- 60% Female; 40% Male
- 20% Healthcare Workers
- 36% have underlying health conditions

- Age range of positive COVID-19 cases: 12-99 years
- Age Distribution for Charles County cases:
- Under 18 years: 0.3%
- 18-64 years: 80.4%
- 65+ years: 19.3%

ESSENCE data for urgent care utilization at Patient First in Waldorf had no data warnings or alerts for Thursday, 4/16. Patient volume was 29 on 4/16. All were discharged to home for self-care. 6 presented with ILI on Thursday. One case listed an exposure to COVID-19, but case was there for an unrelated health condition. Diagnoses included bronchitis, chest pain on breathing, allergic rhinitis, and acute tonsillitis. One case was tagged with a CDC Classifier for Coronavirus, and 2 cases were tagged for Influenza Negative mention.

Surveillance of EMS call data and alerts

The epidemiologist monitors the Charles County DES First Watch trigger alerts. The number of daily trigger alerts for COVID-19 cases or COVID-19 persons under investigation was 26 on 4/16. Discussions with Robbie Jones from EMS reveal data issues with the alert system. The decrease in COVID-19 PUI alerts does not indicate a decrease in call volume. The epidemiologist has also noticed potential COVID-19 PUI that came as regular trigger alerts. Data issues are being worked.

4/16: 26

Racial breakdown

Total: 337 cases on 4/17 at 9:30 am MDH line list assessed through REDCap:

(Case counts with less than 7 cases should not be shared publicly. This data is confidential.)

- Asian: 5 (1.5%)
- Black/African American: 149 (44.2%)
- White: 72 (21.4%)
- Other: 12 (3.6%)
- Two or more races: 1 (0.3%)
- Data not available: 98 (29%)

Ethnicity breakdown

- Hispanic 5 (1.5%)
- Non-Hispanic 234 (69.4%)
- Declined to answer 40 (11.9%)
- Data not available 58 (17.2%)

Epidemiologist note: *Please use caution when drawing any conclusions regarding race or ethnicity. Nearly one-third of race data is not available, and information regarding this missing population cannot be assumed. Additionally, it should be noted that the greatest number of cases (57%) are the Waldorf zip codes of 20601, 20602, and 20603. Over half of the county population lives in those zip codes. Additionally, those zip codes have a very diverse population with minority populations comprising the majority of the zip code level population and with African Americans being the largest racial group in those zip codes.*

Zip Code breakdown

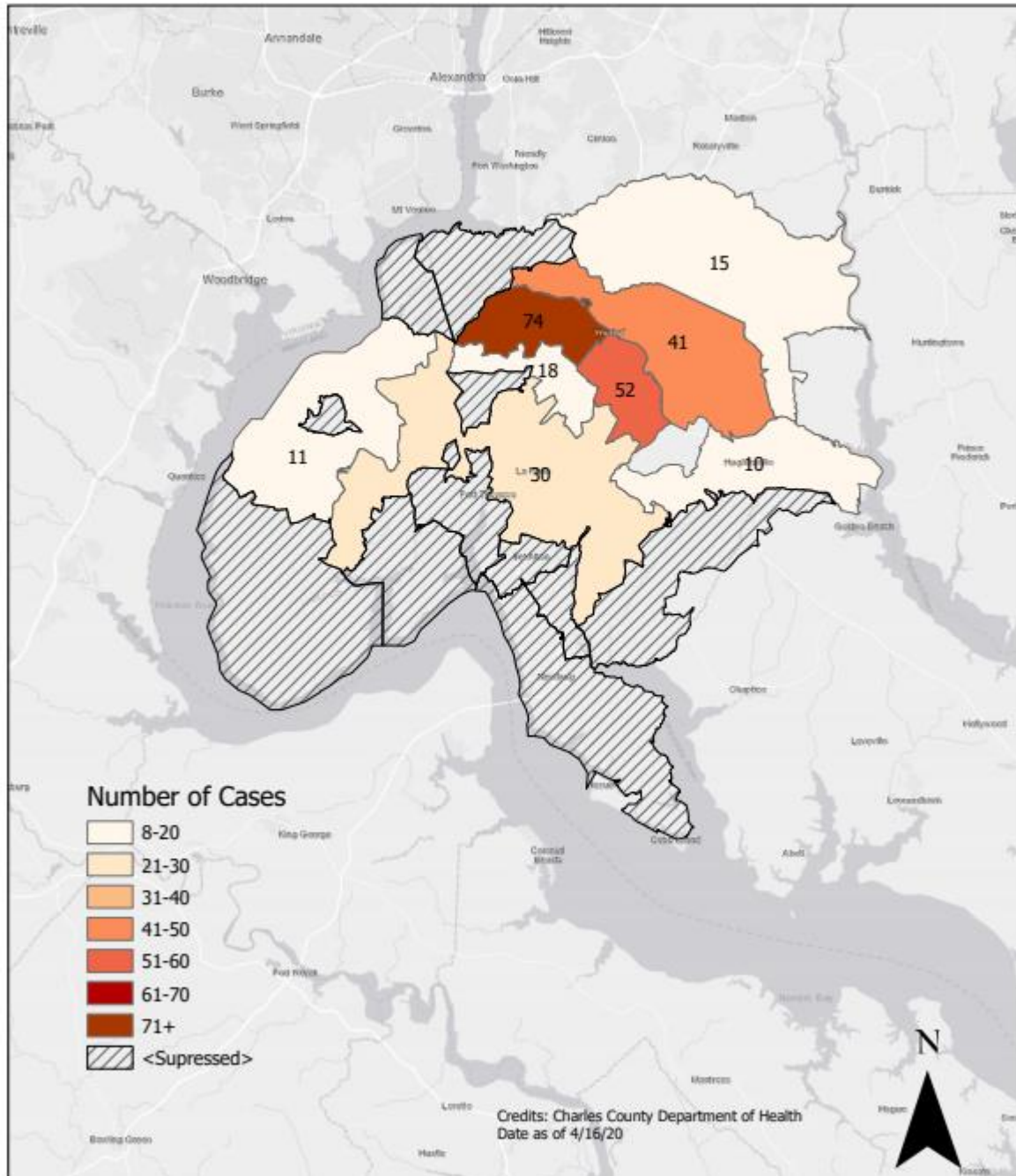
Zip Code level data was also analyzed using the MDH line lists of confirmed cases in REDCap. Data was accessed on 4/17 at 9:30 am with 337 cases as the total count at that moment in time. Data for all zip code with a case count greater than 7 has been included in the attached GIS map. *(Zip code level data with counts less than 7 cases cannot be shared publicly and must remain confidential.)*

Confirmed cases by zip code:

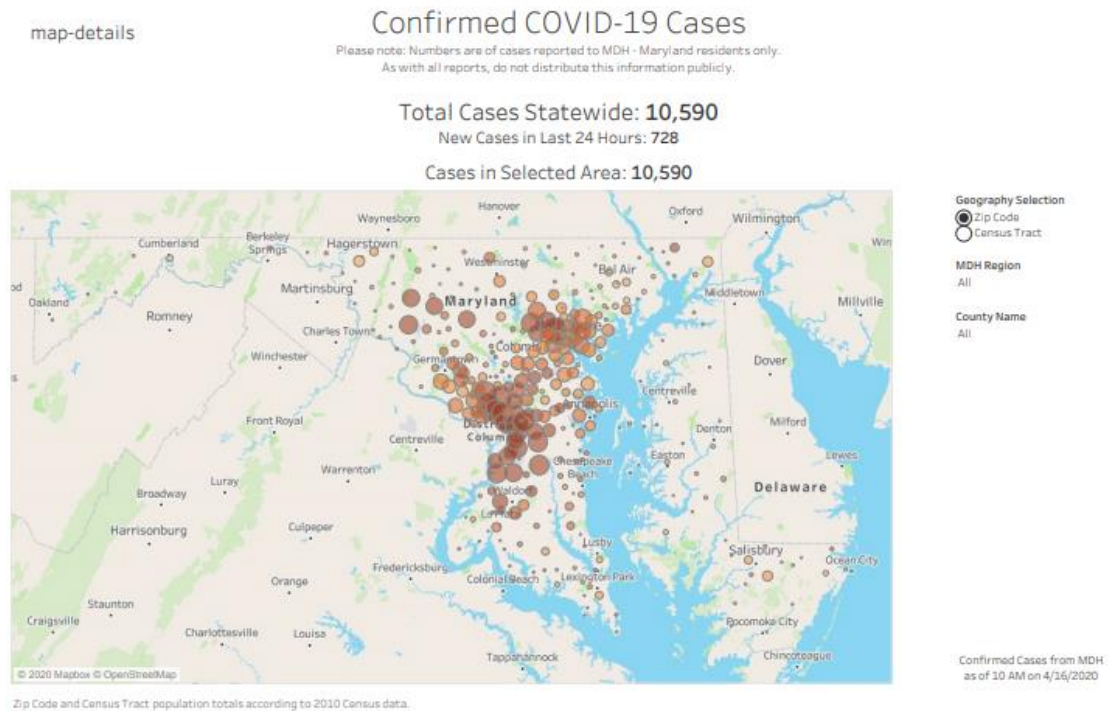
20601: 46
20602: 61
20603: 86
20607: 5
20611: 1
20613: 16
20616: 6
20622: 2
20632: 2
20637: 12
20640: 11
20646: 34
20658: 1
20662: 3
20664: 2
20675: 3
20677: 1
20693: 1
20695: 22

ADDITIONAL INFORMATION: *This includes the following:*

COVID-19 Case Count in Charles County Maryland



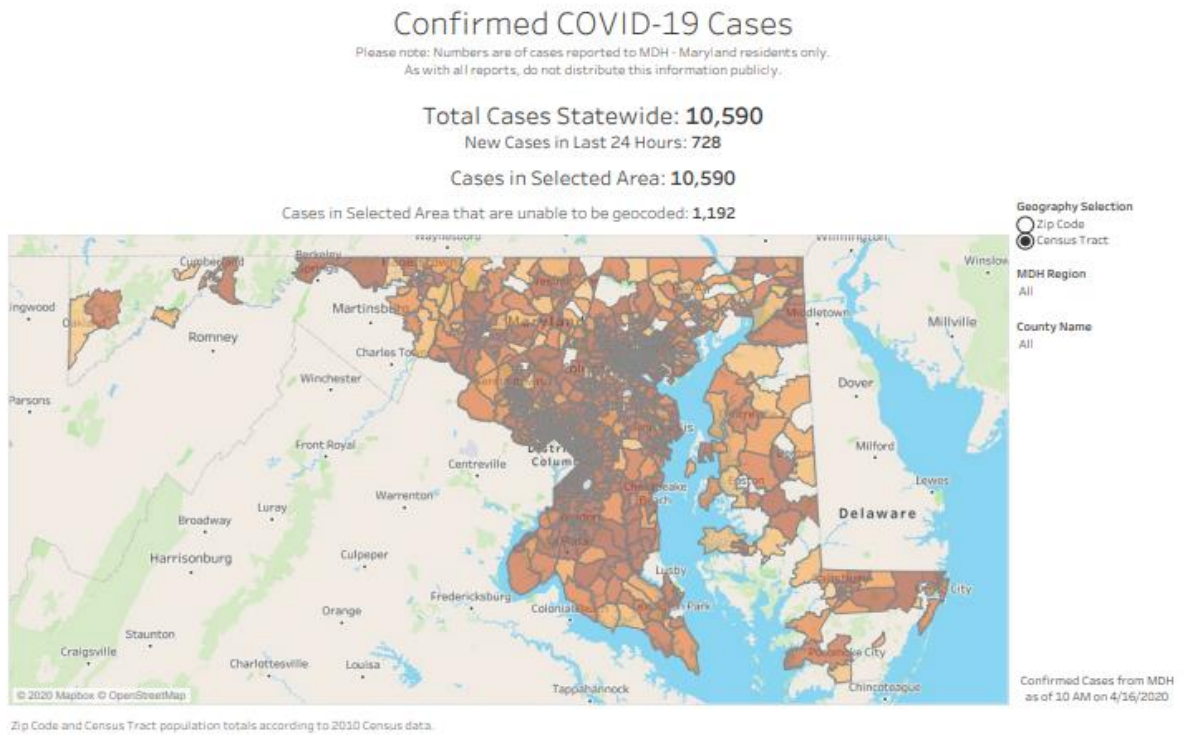
- **Heat map of COVID cases in Maryland by zip code** – *provided through the Chesapeake Regional Information System for our Patients (CRISP)*



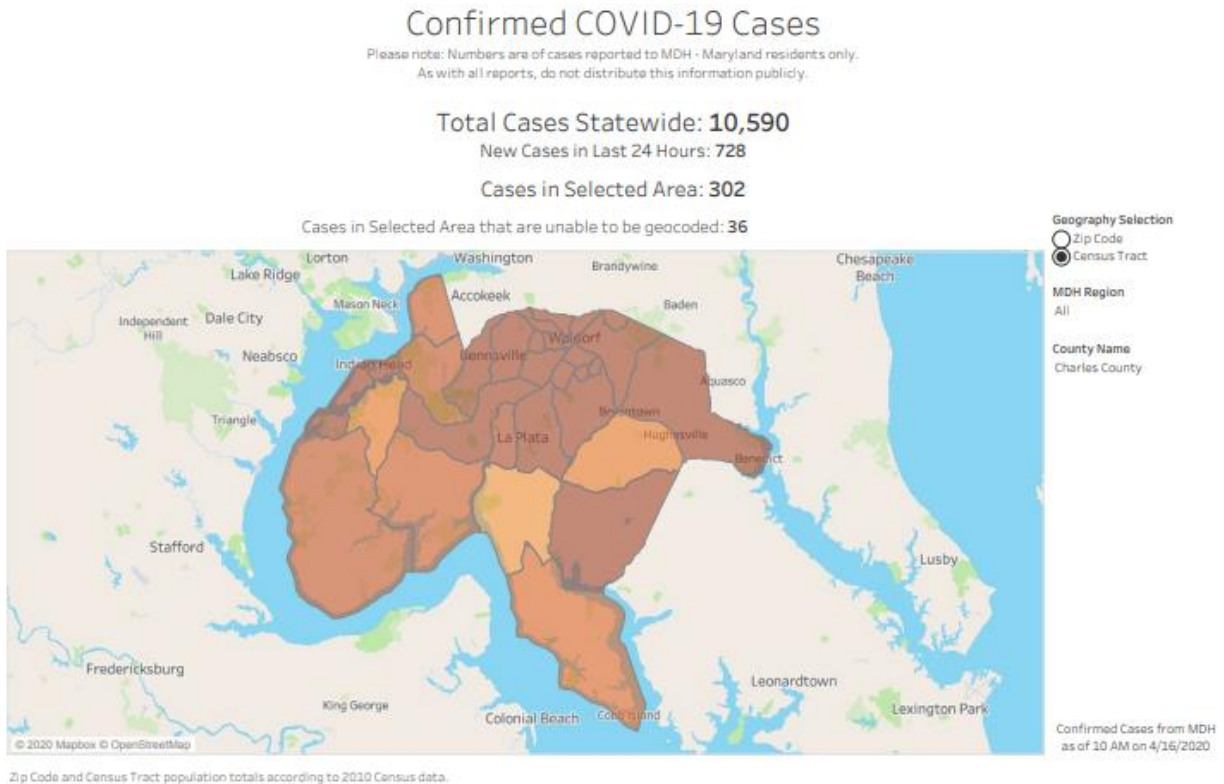
- **Heat Map of Southern Maryland**



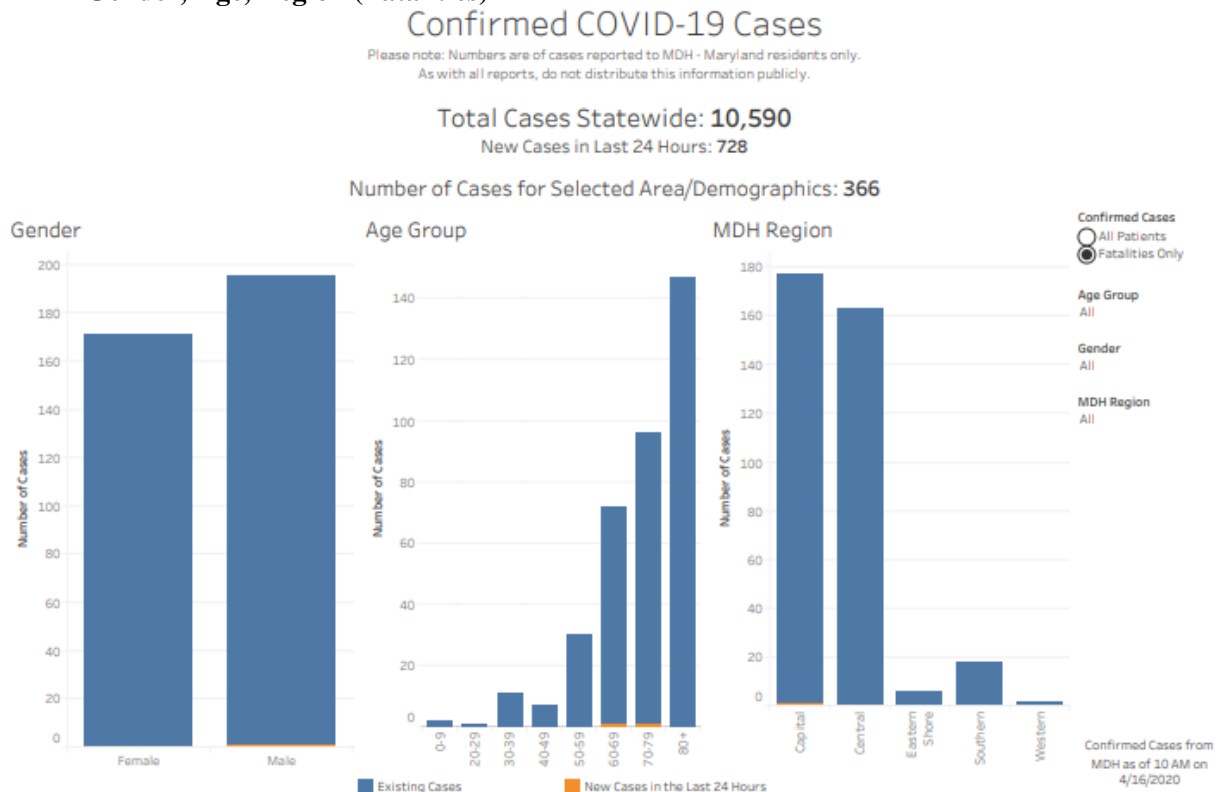
- **Maryland Case Map**



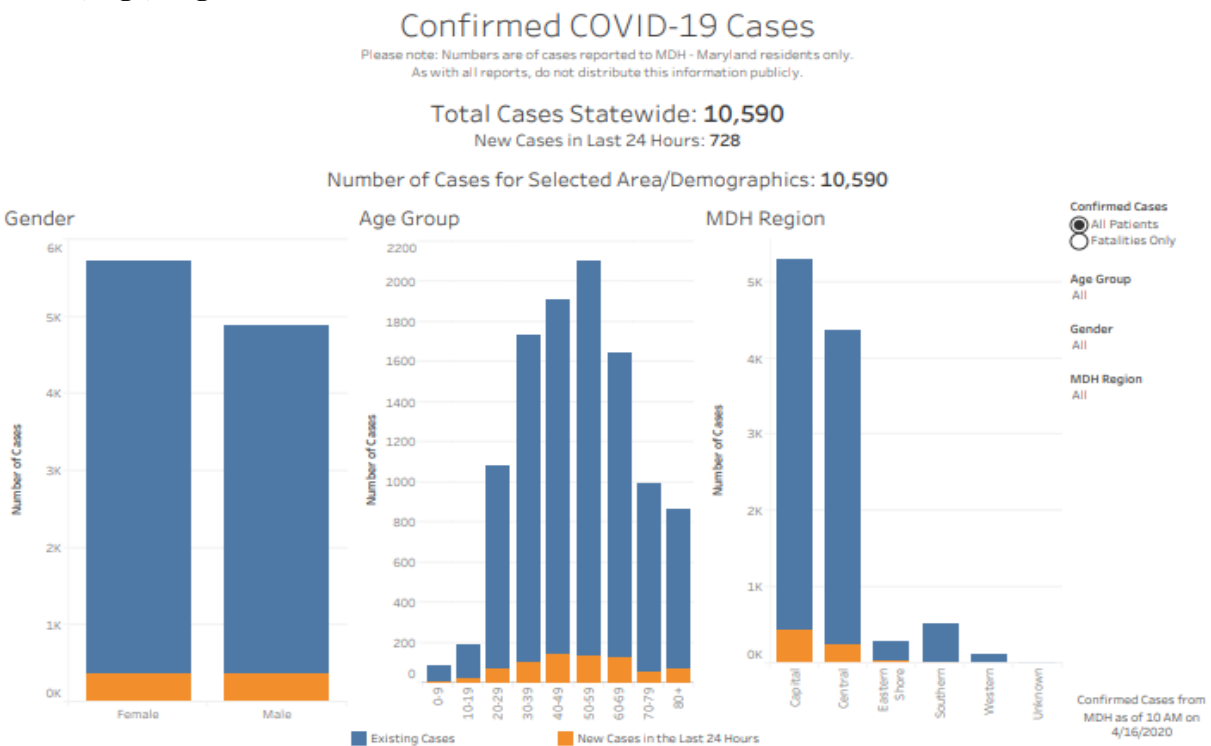
- **Charles County Case Map**



- Gender, Age, Region (Fatalities)



Gender, Age, Region (All)



- Statewide Cases by Date

Confirmed COVID-19 Cases

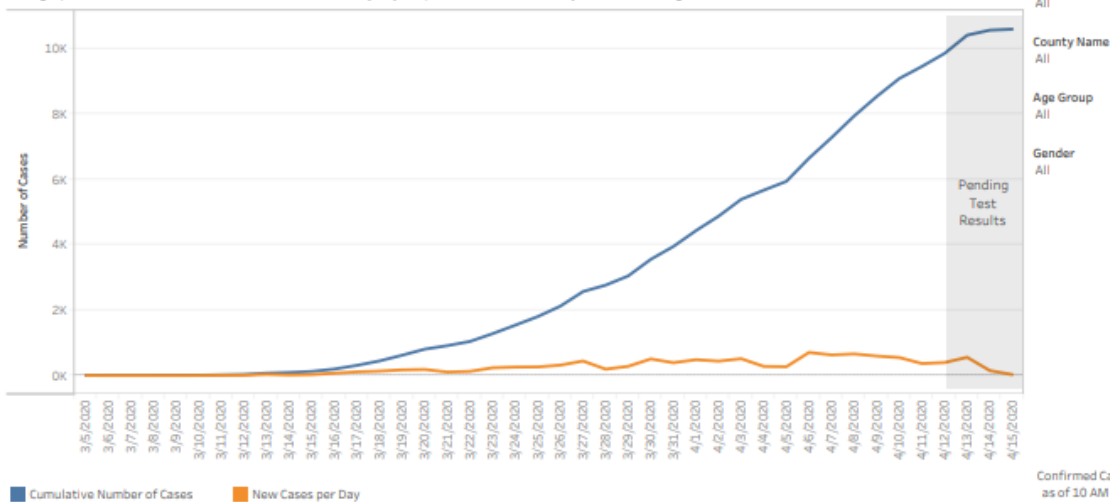
Please note: Numbers are of cases reported to MDH - Maryland residents only.
As with all reports, do not distribute this information publicly.

Total Cases Statewide: **10,590**

New Cases in Last 24 Hours: **728**

Number of Cases for Selected Area/Demographics: **10,590**

This graph shows confirmed cases and cumulative cases by day of specimen collection. Daily totals will change as test results are released.



Date shown is the sample collection date, not the date when the test result was confirmed. Daily totals may change as pending tests are reported.

- Charles County Cases by Date

Confirmed COVID-19 Cases

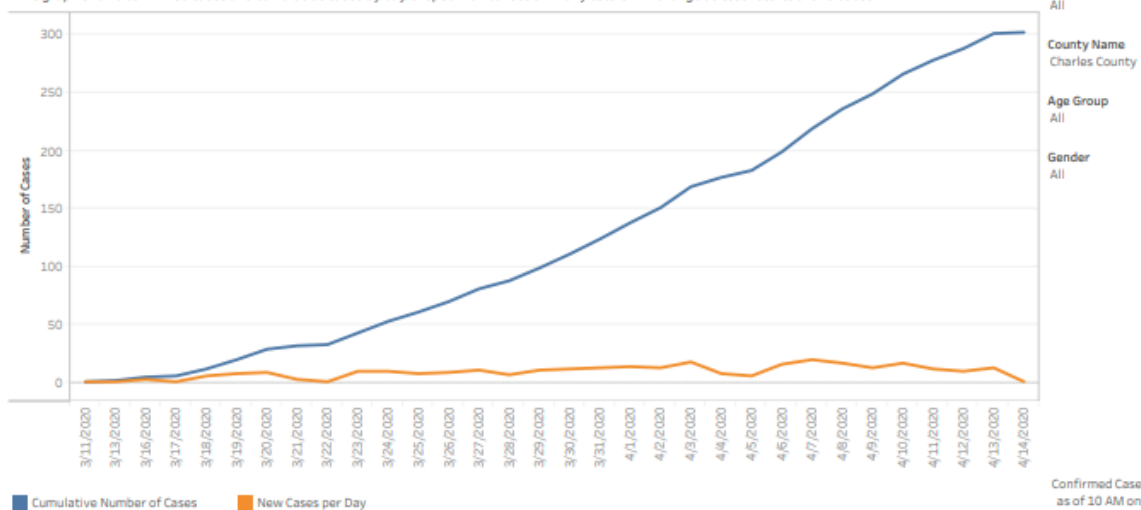
Please note: Numbers are of cases reported to MDH - Maryland residents only.
As with all reports, do not distribute this information publicly.

Total Cases Statewide: **10,590**

New Cases in Last 24 Hours: **728**

Number of Cases for Selected Area/Demographics: **302**

This graph shows confirmed cases and cumulative cases by day of specimen collection. Daily totals will change as test results are released.



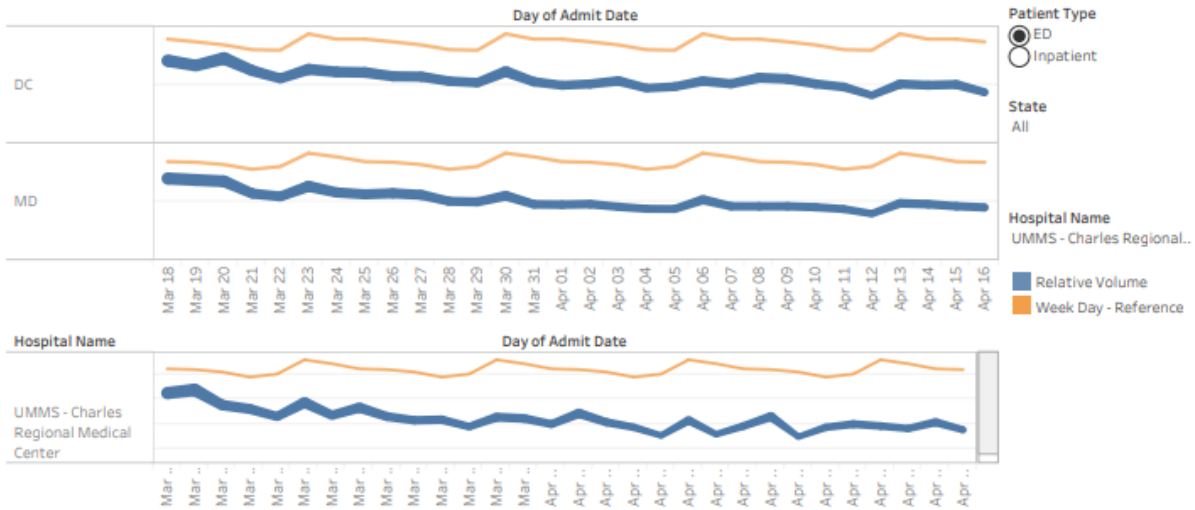
Date shown is the sample collection date, not the date when the test result was confirmed. Daily totals may change as pending tests are reported.

- Hospital Volume Trends ED**

Hospital Volume Trend Lines

These volume data are derived from real-time Admission/Discharge/Transfer feeds sent to CRISP. The thickness of the line is a measure of volume. These volume counts are imprecise for reasons such as differences in how feeds are implemented among hospitals. However, the trendlines provide utility in understanding directional volume change over time.

The orange reference line shows the statewide average relative volume by the day of the week, using all ADT data from January 1, 2020 to February 29, 2020.

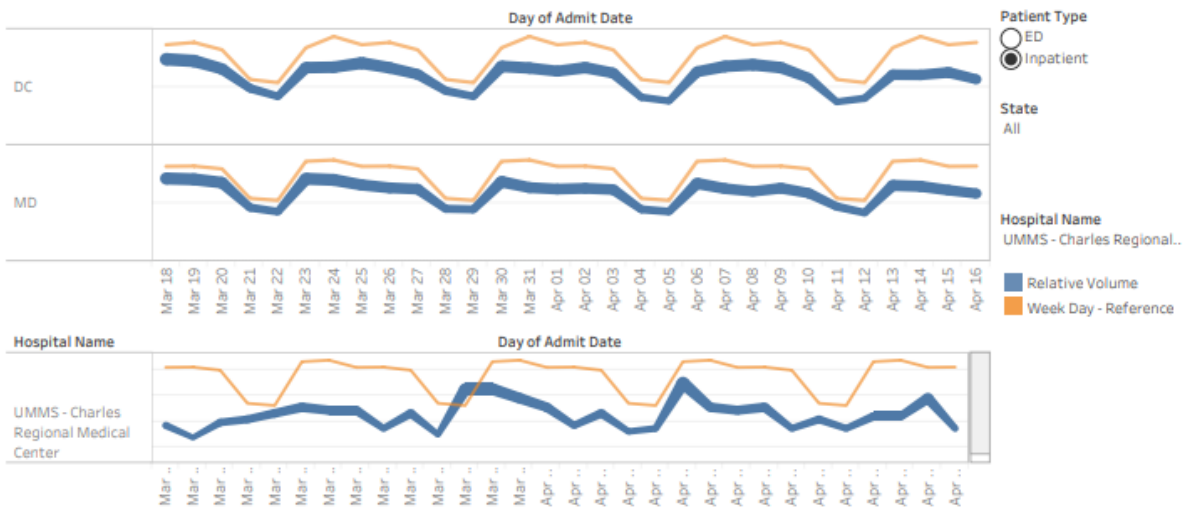


- Hospital Volume Trends Inpatient**

Hospital Volume Trend Lines

These volume data are derived from real-time Admission/Discharge/Transfer feeds sent to CRISP. The thickness of the line is a measure of volume. These volume counts are imprecise for reasons such as differences in how feeds are implemented among hospitals. However, the trendlines provide utility in understanding directional volume change over time.

The orange reference line shows the statewide average relative volume by the day of the week, using all ADT data from January 1, 2020 to February 29, 2020.



- Maryland Occupied Staff Acute Care

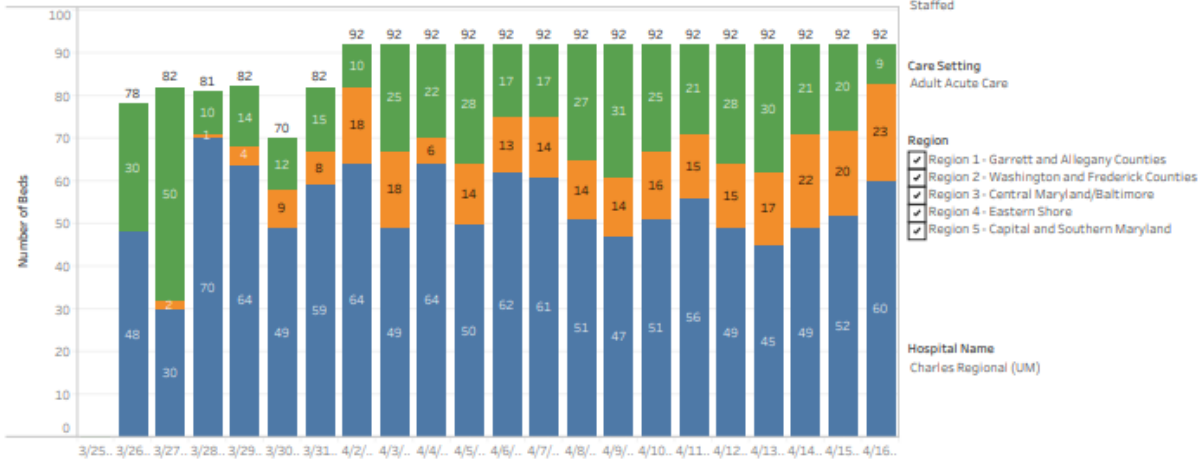
MIEMSS Facility Resources Emergency Database (FRED)

Data as of 4/16/2020

FRED did not collect COVID-19 data on April 1, 2020.

The data in this report is self-reported daily by hospitals to Maryland Institute for Emergency Medical Services Systems (MIEMSS). The data in this report reflect point in time counts. Please note data is presented as reported and is not edited or validated by CRISP.

Statewide Occupied Staffed - Adult Acute Care



Occupied Staffed by Hospital - Adult Acute Care



- Maryland Occupied Staff ICU

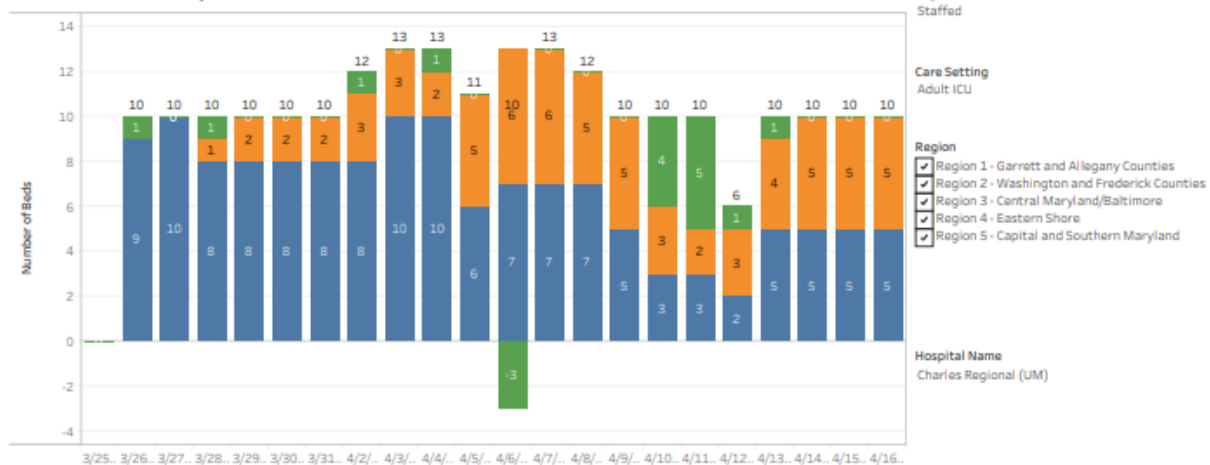
MIEMSS Facility Resources Emergency Database (FRED)

Data as of 4/16/2020

FRED did not collect COVID-19 data on April 1, 2020.

The data in this report is self-reported daily by hospitals to Maryland Institute for Emergency Medical Services Systems (MIEMSS). The data in this report reflect point in time counts. Please note data is presented as reported and is not edited or validated by CRISP.

Statewide Occupied Staffed - Adult ICU



Occupied Staffed by Hospital - Adult ICU



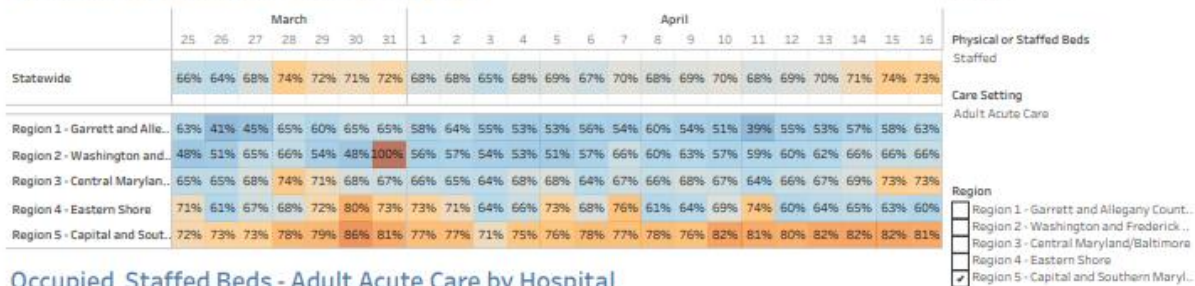
• Maryland Occupied Staffed Beds Acute Care

MIEMSS Facility Resources Emergency Database (FRED)

Data as of 4/16/2020

The data in this report is self-reported daily by hospitals to Maryland Institute for Emergency Medical Services Systems (MIEMSS). The data in this report reflect point in time counts. Please note data is presented as reported and is not edited or validated by CRISP.

Occupied Staffed Beds - Adult Acute Care



Occupied Staffed Beds - Adult Acute Care by Hospital

Hospital Name	March						April															
	26	27	28	29	30	31	1	2	3	4	5	6	7	8	9	10	11	12	13	14	15	16
Charles Regional (UM)	62%	39%	88%	83%	83%	82%	74%	89%	73%	76%	70%	82%	82%	71%	66%	73%	77%	70%	67%	77%	78%	90%

Hospital Name
Charles Regional (UM)

Occupied %
0% 100%

• Maryland Occupied Staffed Beds ICU

MIEMSS Facility Resources Emergency Database (FRED)

Data as of 4/16/2020

The data in this report is self-reported daily by hospitals to Maryland Institute for Emergency Medical Services Systems (MIEMSS). The data in this report reflect point in time counts. Please note data is presented as reported and is not edited or validated by CRISP.

Occupied Staffed Beds - Adult ICU



Occupied Staffed Beds - Adult ICU by Hospital

	March						April															
Hospital Name	26	27	28	29	30	31	1	2	3	4	5	7	8	9	10	11	12	13	14	15	16	
Charles Regional (UM)	90%	100%	90%	100%	100%	100%	100%	92%	100%	92%	100%	100%	100%	100%	60%	50%	83%	90%	100%	100%	100%	

Hospital Name
Charles Regional (UM)

Occupied %
0% 100%

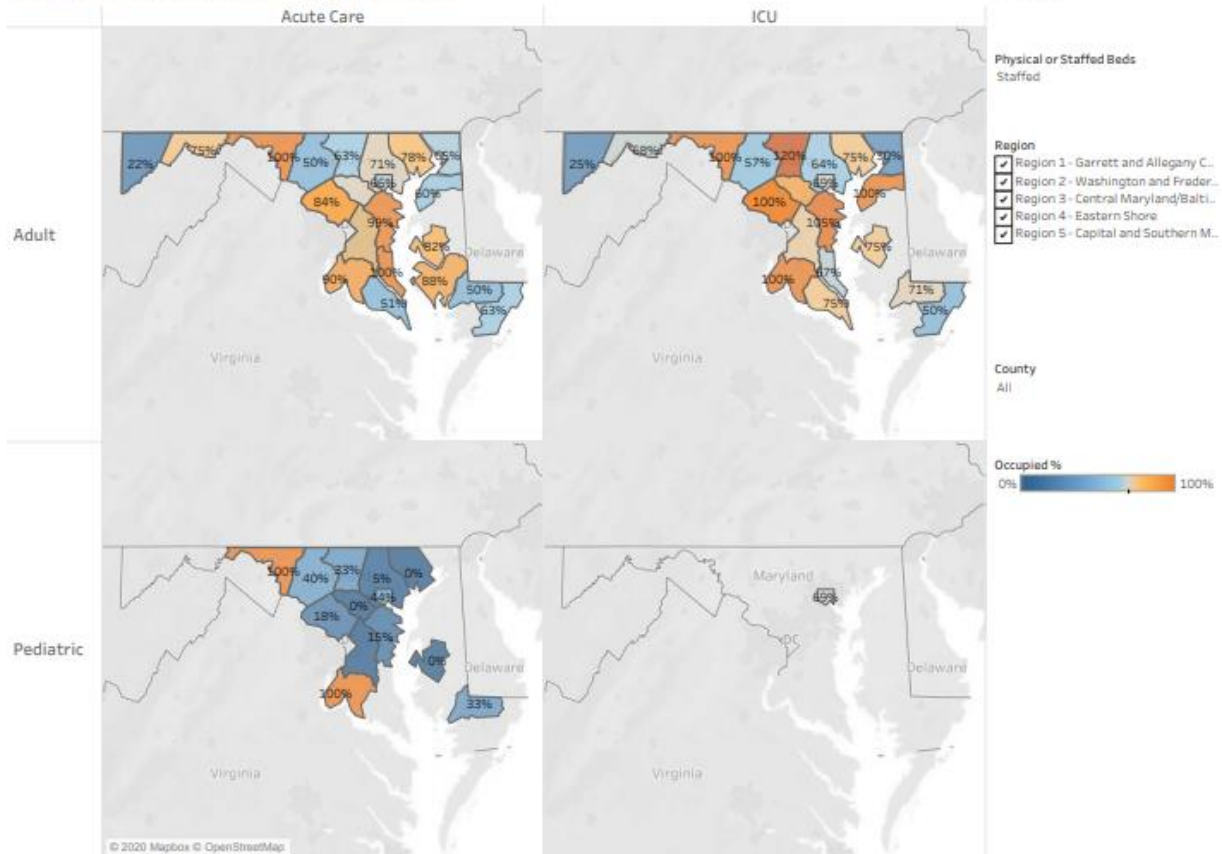
- **Maryland Occupied Staffed Beds**

MIEMSS Facility Resources Emergency Database (FRED)

Data as of 4/16/2020

The data in this report is self-reported daily by hospitals to Maryland Institute for Emergency Medical Services Systems (MIEMSS). The data in this report reflect point in time counts. Please note data is presented as reported and is not edited or validated by CRISP.

Occupied Staffed Beds - on 4/16/2020



Source: CRISP, 2020. CRISP MIEMSS FRED SmartSheet Download.



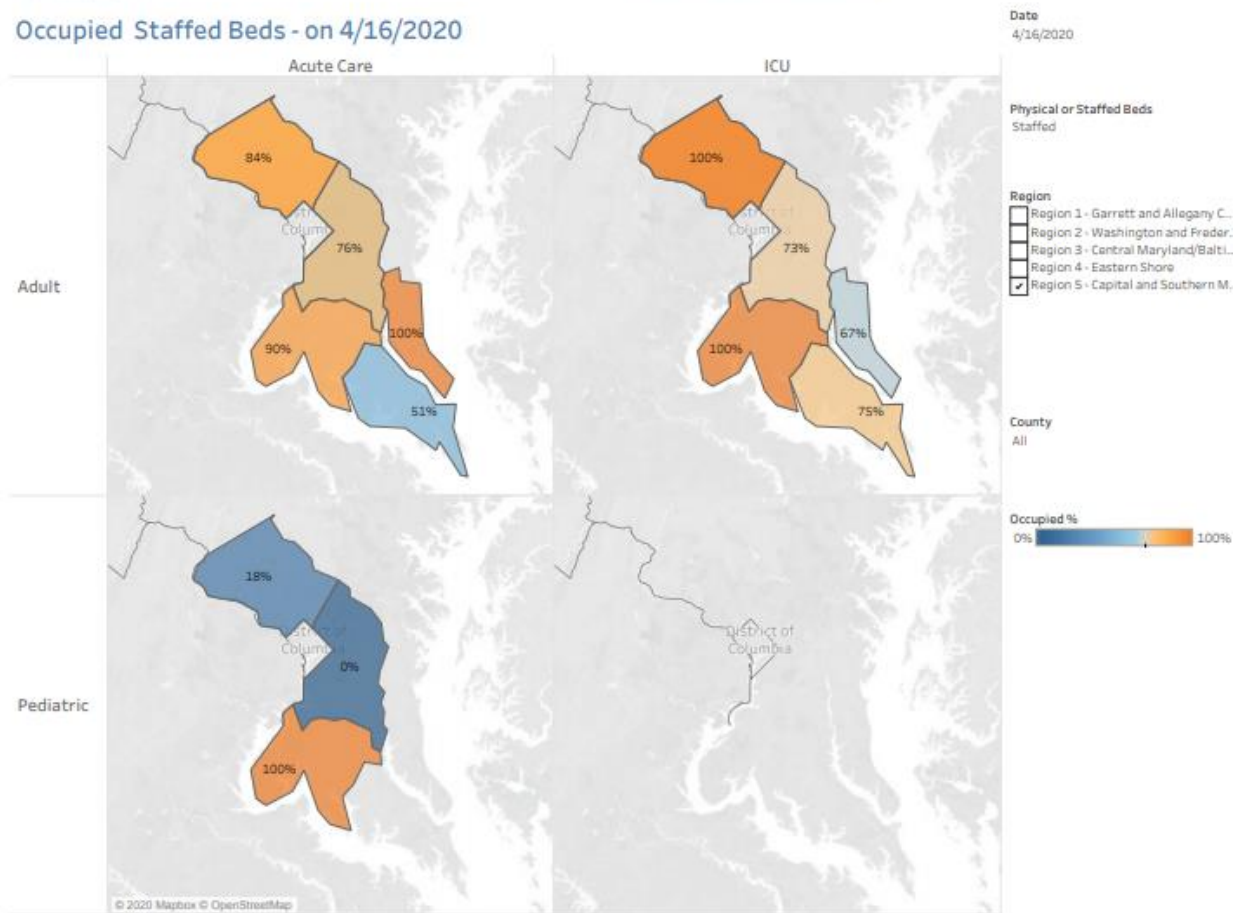
- Maryland Occupied Staffed Beds Regional**

MIEMSS Facility Resources Emergency Database (FRED)

Data as of 4/16/2020

The data in this report is self-reported daily by hospitals to Maryland Institute for Emergency Medical Services Systems (MIEMSS). The data in this report reflect point in time counts. Please note data is presented as reported and is not edited or validated by CRISP.

Occupied Staffed Beds - on 4/16/2020



Source: CRISP, 2020. CRISP MIEMSS FRED SmartSheet Download.



- **Maryland Occupied Staffed Beds Charles County**

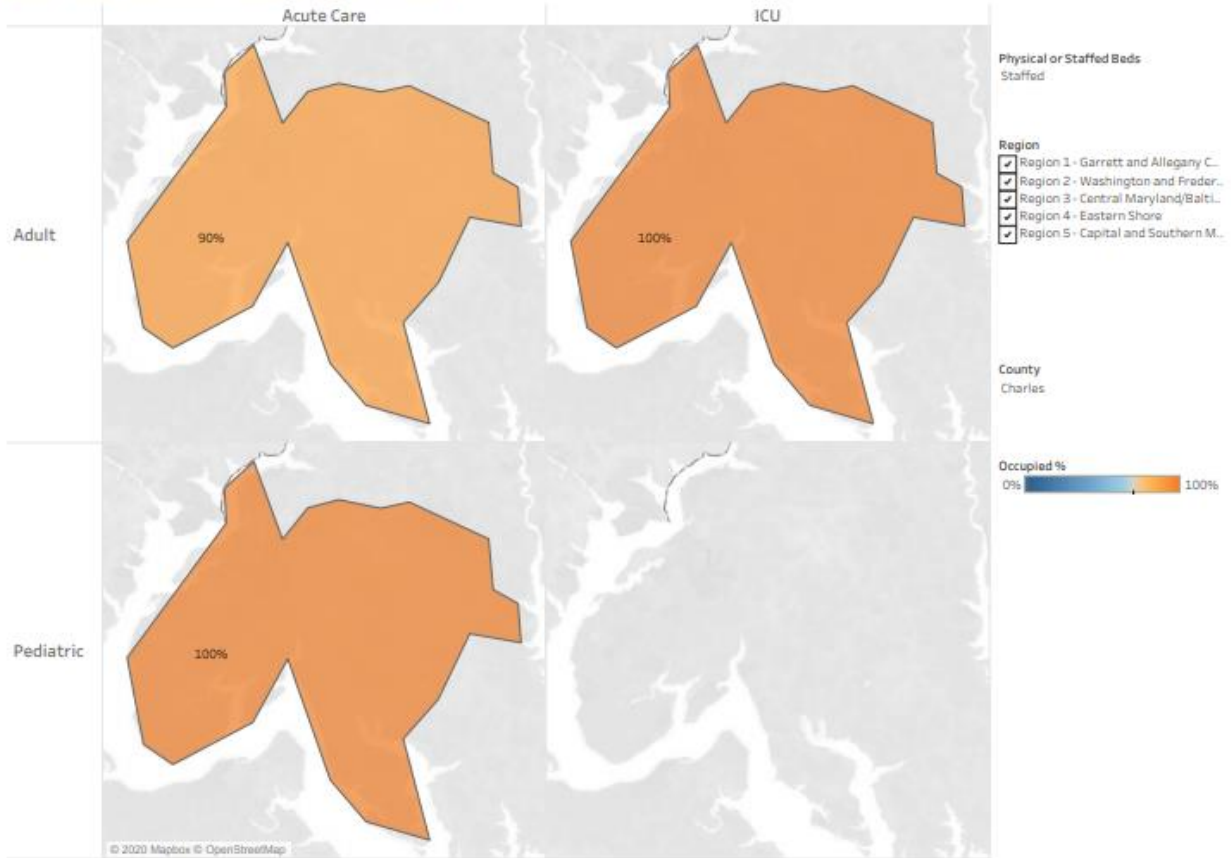
MIEMSS Facility Resources Emergency Database (FRED)

Data as of 4/16/2020

The data in this report is self-reported daily by hospitals to Maryland Institute for Emergency Medical Services Systems (MIEMSS). The data in this report reflect point in time counts. Please note data is presented as reported and is not edited or validated by CRISP.

Occupied Staffed Beds - on 4/16/2020

Date
4/16/2020



Source: CRISP, 2020. CRISP MIEMSS FRED SmartSheet Download.



• Statewide Capacity Overview

MIEMSS Facility Resources Emergency Database (FRED)

Data as of 4/16/2020

The data in this report is self-reported daily by hospitals to Maryland Institute for Emergency Medical Services Systems (MIEMSS). The data in this report reflect point in time counts. Please note data is presented as reported and is not edited or validated by CRISP.

Statewide Capacity Overview

Available Acute Care and ICU Staffed Beds (Adult):

1,864

(1864/6964) = 27%

Change from day before:

+109 beds

Ventilators Available:

1,256

(1256/1896) = 66%

Change from day before:

-4 vents

Patients in the Emergency Department:

607

(607/2181) = 28%

Change from day before:

-33 patients

Hospitalized Confirmed COVID-19 Patients

Staffed Acute Care Beds Occupied by COVID-19 Patients:

762

(762/5649) = 13%

Change from day before:

-26 patients

Staffed ICU Beds Occupied by COVID-19 Patients:

439

(439/1315) = 33%

Change from day before:

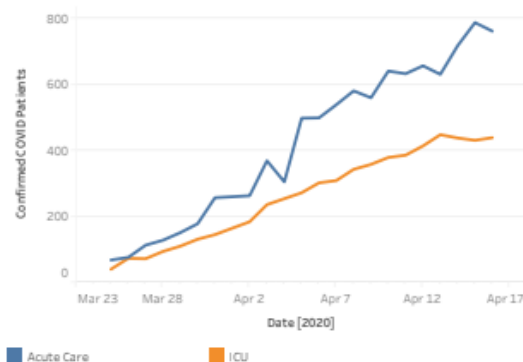
+8 patients

Bed Summary

	Physical Beds	Staffed Beds	Occupied Beds	% Occupied Physical Bed	% Occupied Staffed Bed
Adult Acute Care	7,072	5,649	4,133	58%	73%
Adult ICU	1,688	1,315	967	57%	74%
Pediatric Acute Care	310	257	88	28%	34%
Pediatric ICU	106	106	73	69%	69%

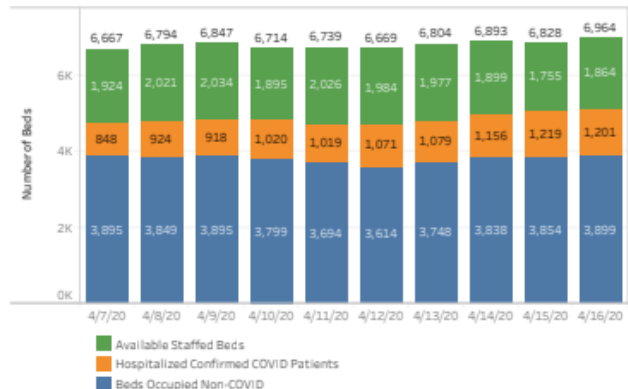
Hospitalized COVID-19 Patients

Number of COVID-19 Positive Patients in Acute Care and ICU



Source: CRISP, 2020. CRISP MIEMSS FRED SmartSheet Download.

Statewide Occupied Staffed - Adult Acute Care and ICU - Lasts 10 Days



MISCELLANEOUS

Nothing new to report

Respectfully submitted by Charles County PHEP

HOSPITAL BRIEF 4-17-2020

- The trigger point for starting up the tent operations outside of the hospital has not yet been activated. Activation will be determined by both staffing levels and patient census presenting to the ED.
- Hospital Bed Capacity = 166. Census = 84
- Hospital ICU Census = 9
- Isolation Room Capacity = 12
- Isolation Rooms Occupied = 8
- Confirmed positive cases of COVID-19 patient admissions = 27
 - Of the total 27 COVID-19 positive patients, six (6) of the patients are located in the ICU, and 21 are located in the 3 South dedicated COVID-19 unit
- PUI admissions = 2
- Ventilated COVID-19 positive patients = 5
- Ventilators not in use = 15
- COVID-19 related deaths = 13
- CRMC has implemented a policy that requires ALL staff, visitors (which would be very limited), and contractors of any kind to wear a mask while in the hospital at all times.
- The 3 South patient unit at CRMC is dedicated to COVID-19 positive patients only.

Date: Friday, April 17, 2020

From: John Filer

Subject: Status on Marcus Paxton planning and procession

To the Charles County First Responders,

Below is a letter I received from Courtney Shannon in reference to the details to honor EMT Marcus Paxton.

Dear Chief Filer,

After meeting with the family and having discussion of their wishes, and also working with Michael Hine in Baltimore City, the plans are as follows to honor EMT Marcus Paxton:

It will be communicated when the dates and times are finalized for bringing Marcus Paxton to rest. This will be a two-day event with a virtual viewing and a procession to bring him home the next day.

The virtual viewing will be held at White Marsh Volunteer Fire Station. It will be an opportunity for people to drive by to display their respect to Marcus and show support to his family. Medic 3 will be the backdrop for the Urn, Baltimore City FD and Baltimore County Honor Guard. The viewing will be scheduled for two (2) hours or until the last vehicle passes through and/or 3 hours maximum.

The next morning, BCFD Medic 3 and an BCFD EMS Staff Car, the family vehicle (Charles County training van), with one or two vehicles from each Baltimore County, Charles, Calvert, and St. Mary's will line up on the Lombard Street side of Steadman Station. The procession will begin at Steadman Station go to I-95, 95 through Baltimore County, through Howard County, Prince George's County to Route 5 South into Charles County. The procession will turn onto Rt. 231 crossing the Benedict Bridge into Calvert County to Route 4 southbound, cross the Thomas Johnson bridge into St. Mary's county to Rt. 235 ending at Bay District VFD. Police escort from Baltimore City, Calvert County, Charles County, and St. Mary's County will all be coordinated. The procession is to pass through each county to give each agency an opportunity to line the route in show of respect.

Upon arrival at Bay District VFD you will have the opportunity to present the Urn, the citation and flag from the commissioners, and any other token of honor that you wish to present. All other members will remain in their apparatus per the Governor's mandate. Upon completion of the presentations all apparatus will be returned.

At a later date (TBD) Local 734 will conduct a memorial service for our brother Marcus Paxton.

*Respectfully Submitted,
Courtney Shannon*

Law Enforcement Branch Briefing

COVID-19 Charles County IMT

April 17st, 2020

Buildings:

Charles County Sheriff's Office: District 1 Lobby is closed for scheduled remodeling. The District 1 clerks have moved the CCDC Annex building in the same parking area and that lobby is open as normal

Maryland State Police: Restricted to public

Maryland Transportation Authority: Closed to Public

La Plata Police Department: Closed to the public

Natural Resources Police: Building Closed

Operations:

Charles County Sheriff's Office: Operations have gone to emergency schedule in accordance with a CCSO level 3 All-Hazards activation. Patrol operational periods are 12 hours from 0700-1900 and 1900-0700. All other operations sections running with normal services being provided from modified locations. Services provided have not been reduced or augmented as of now.

Maryland State Police: Operations as normal

Maryland Transportation Authority: Operations as normal

La Plata Police Department: Operations as normal; Doing screening in and screening out

Natural Resources Police: Operations as normal

Internal COVID-19:

Charles County Sheriff's Office:

- 0 sworn officer quarantined
- 3 officers isolated
- 1 correctional officer quarantined
- 2 correctional officers isolated
- 1 civilian quarantined
- 3 civilians isolated

Maryland State Police: None local

Maryland Transportation Authority: None local

La Plata Police Department: 2 sworn officers isolated

Natural Resources Police: 1 sworn officer isolated

Crime Stats:

No significant crime trends to report.

TRU:

Charles County Sheriff's Office: Open and working; triage site for COVID-19 calls for service.

Maryland State Police: Open and working

Maryland Transportation Authority: Open and working

La Plata Police Department: Open and working

Natural Resources Police: Open and working

Call Restrictions:

Charles County Sheriff's Office: None

Maryland State Police: None

Maryland Transportation Authority: None

La Plata Police Department: None

Natural Resources Police: None

Governor's Order Violations since Emergency Orders Issued

Violation sustained calls for service: 39

Warnings: 36

Charges later: 2

On-scene arrest: 1

Items of Note: (Not for redistribution)

None

***CHANGES IN RED**

Intelligence Briefing 4-17-2020
COVID Charles County

Updated Infection Numbers: As of 1003 hrs.

Total worldwide: 2,181,508 **+99,539 since the 4-16-20 brief.**

Worldwide increase of confirmed cases by 24-hour period over the last 10 days

4-7/8	4-8/9	4-9/10	4-10/11	4-11/12	4-12/13	4-13/14	4-14/15	4-15/16	4-16/17
160,963	48,490	120,662	95,648	85,648	69,285	134,855	65,338	80,985	99,539

Total fatalities worldwide: 147,337 **+8,850 since the 4-16-20 brief**

Analysis note: The wild swings in worldwide confirmed case numbers and fatality numbers continue to illustrate the lack of consistent reporting channels. These number should not solely be used to gauge the scope and magnitude of the current situation.

Total confirmed cases in the US: 671,493 **+31,760 since the 4-16-20 brief**

US increase of confirmed cases by 24-hours period over the last 10 days

4-7/8	4-8/9	4-9/10	4-10/11	4-11/12	4-12/13	4-13/14	4-14/15	4-15/16	4-16/17
30,846	32,641	33,958	35,284	28,520	28,326	54,634	27,062	38,764	31,493

Analysis note: The US case number increases have remained relatively unchanged for the last 10 days. However, this is likely not an indication of “flattening the curve.” As the data is reviewed, keep in mind we are reporting an additional 28 to 33,000 NEW cases each day. We have yet to see any dramatic decreases in diagnoses new cases.

Total fatalities in US: 33,286 **+2,296 since 4-16-2020**

Maryland Numbers: As of 1000 hrs. via <https://coronavirus.maryland.gov/>

Total confirmed cases in State in of MD: 11,572 **+788 since the 4-16-20 brief**

Total tested in the State of MD: 50,437 **+2,378 over 4-16-20**

Percent of those test that test positive: **22.9%**

Analysis note: Maryland percentage of positive test is now on par with PA, MA, IL, MI, CA and LA.

Total Fatalities in State of MD: 425 **+33 change since the 4-16-20 brief**

Number of probable deaths: 69 (this is new statistic)

Total Hospitalizations: 2,612 **Increase of 161 from 4-16-2020**

First Responder Numbers in Charles County:

18 Quarantine: means exposed and they can't come to work. **-12 since last report**

37 Self Isolation: means sick or tested positive -19 since last reported

Analysis note: Charles County continues to work on a comprehensive reporting system for first responder numbers. This explains the wild swings in numbers. We believe we have created a process to correct this. Moving forward the numbers should be more consistent.

Weather:

Sat 55-39 rain, Sunday 66-48 cloudy, Monday 60-42 rain

Analysis note: Warm weather will likely mean more people outside, increasing the probability of gatherings. Rainy weather will drive people into their residences. The potential for increased calls for police service exists.

Local:

Media attention of the local nursing home and assisted care facilities issues dominated local coverage over the last 12 hours.

No stores visited this am:

Analysis note: Beef, poultry, and pork plants continue to close at an alarming rate. This will put pressure on the meat market and likely cause a run on store inventories as the press continues to cover these closures.

A fire Station in Charles County was temporally closed due to a presence of a positive person in the station. Station was cleaned and reopened within 4 hours.

Nursing home and assistant living patients and staff make-up over 1/3 of the total number of positive cases reported in Charles County.

Maryland Update:

Gov. press conf. at 1430 today

Gov. announces recovery plan

State wide order to wear masks in public

Region:

Over 11,314 cases in the NCR as of 0500 4-17-2020,

21,281 cases in Maryland, DC, and Virginia as of 1100 on 4-17-2020.

DC Convention Center being prepped to act as a field hospital.

DC expands the stay-at-home order through May 15th

VA extends the stay-at-home order through May 8th

National:

An additional 5.2 million Americans file for unemployment

Nursing home deaths and infection rates have dominated the local and national news over the last 24 hours. It was noted the first 6 minutes of a local station's 6 PM news broadcast was devoted to nursing home issues.

Local critical infrastructure:

No outages or disruptions are reported or are appear to be likely as of today.

Predications/ Analysis:

- Protests over the continuing of stay at home orders, and business closures are becoming more prevalent and boisterous. Law enforcement should begin to make plans on how to track these groups and respond to events.
- First responder staffing and exposure issues will likely continue to increase. Priority messaging about PPE, manpower reduction strategies, and outside the box thinking should be continued and solutions expedited.
- FOIA and PIA requests for detailed records on infections in assisted living and nursing homes will increase as investigative reporting on this issue increases.
- Grocery stores could become a hotbed of fear and anxiety due to limiting numbers of patrons, assigning shopping days, mask requirements, and now limited meat supplies.
- As critical case in Charles County remain low (outside of nursing homes and assisted living homes), needs in other local jurisdictions are growing. Resources should be prioritized and plans should be made to share/deploy critical resources, personnel, and/or facility space to meet the needs regionally.
- The longer this crisis continues the more likely we are to experience critical events that may not be related to the COVID crisis (incidents within the incident). Those in leadership positions need to be prepared to step into dual leadership/managerial roles at a moment's notice. This requires taking care of yourself and staying up on the latest tactics, strategies and knowledge.
- Planning for crisis recovery starts as soon as the crisis begins. Monday marks the 8th weeks of this crisis, 6th week of schools being closed. Partners and stakeholders should begin planning for what the return to the "new normal" looks like in their organization. Sharing of these plans will help each organization build more comprehensive processes.
- Over the weekend the US will likely eclipse 500,000 cases and 15,000 deaths. Md numbers will likely pass 5000 and 150 fatalities by Friday. These numbers will cause increased pressure to ratchet up rhetoric re: "stay at home orders" and could result in further sanctions and restrictions.
- As the confirmed case numbers continue to rapidly ascend the likelihood of jurisdictions issuing "travel bans" increases. Law enforcement should begin researching the constitutionality of these potential edicts and have plans in place for implantation and begin to develop a public communication strategy. Standardizing local "travel authorization documentation" should be explored by the lead jurisdiction having authority.

- Due to diverted attention, the international and domestic terrorism threat is rapidly increasing. Responders should be reminded to remain vigilant and of the DHS guidelines for spotting suspicion activities and terrorism indicators.
- As we enter into the reported peak of this situation communication, along with sharing of individual branch capability and capacity is more important now than ever. "We don't know what we are going to need to know until we need to know it."
- First responder organizations should begin surveying members for pre-existing conditions and other complicating medical conditions. Responders found to have pre-existing conditions should be placed in limited citizen contact roles.
- A review of the 179 countries that report COVID-19 cases, only two (South Korea and China) have somewhat "flattened the curve" of NEW infections. Both showed flattening roughly 30 to 45 days after the initial spikes. The initial spike in the US began around 3-18-2020.
- Reduced stability in the supply chain along with increased fear and anxiety can be expected with today's "stay at home order."
- After 3 weeks of social distancing and schools being closed non-english speaking communities within Charles County are likely feeling further isolated due to a lack of language specific communications. Direct and increased messaging to Spanish speakers is likely necessary.
- As mass transit continues to shrink in availability, plans should be made to ensure those who rely on it for essential supplies and trips have delivery resources.
- LE and EMS screening protocols should include questions about recent travel to NY, NJ, CT, and FL.
- Immediate attention is needed to direct companies and organization on the proper processes and appropriate contact to use (Donation Manager at the EOC) to donate PPE and cleaning materials to essential personnel
- The next 7 days will likely see a stabilization of a majority of the grocery supply chain. However, the potential for disruption moving forward continues to remain high.
- FOIA and PIA request from media and citizens groups will likely begin to increase the longer this event lasts. "New normal" processes need to be established as soon as possible.
- Lack of child care options will likely add to family stress. Additional resources, activity and options are needed.
- JIC staff should substantially amplify community resource communications
- As we enter the 2nd week of social distancing stress, anxiety, and fear will likely increase. Continuous reminders of patience and focusing on kindness will become increasingly important.
- Many stores restock overnight. Seniors and the vulnerable populations should be strongly encouraged to shop during the early morning hours when supplies are likely to be at their highest.
- As testing increased the confirmed cases in MD will increase. This will likely cause additional life restrictions.

- Supply chain issues will continue and likely increase as further life interruptions and travel restrictions are ordered. The possibility of violence increases as stress increases, especially at grocery stores.
- Commanders of responders and essential staff should have robust plans for potential quarantines and updated continuity of operations including plans for diminished manpower. Further, responder organizations should begin reviewing existing integration plans with the National Guard.
- Obtaining medical supplies and PPE will continue to be an issue for the foreseeable future. All services should use the command ordering process so orders can be tracked.
- The community of Charles County is showing increased signs of pulling together and assisting one another. The JIC should continue to encourage civility and increase positive press of good news stories occurring throughout our community.

“The most effective leaders in crises ensure that someone else is managing the present well, while focusing their attention on leading beyond the crisis toward a more promising future”

Respectfully submitted by Jason Stoddard

COVID-19 Key Points

Below, please see new/updated **CDC COVID-19 guidance and resources** as of **Wednesday, April 15, 2020**.

- **New** [Evaluation for SARS-CoV-2 Testing in Animals](#)
- **New** [Considerations When Preparing for COVID-19 in Assisted Living Facilities](#)
- **New** [Key Strategies to Prepare for COVID-19 in Long-Term Care Facilities \(LTCFs\)](#)
- **New** [Print Resources](#)
- **New** [Tribal Communities](#)
- **New** [Serology Testing for COVID-19](#)
- **Updated** [People who are at Higher Risk for Severe Illness](#)
- **Updated** [Communication Resources for Travelers](#)
- **Updated** [If you are Sick or Caring for Someone](#)
- **Updated** [Infection Control](#)
- **Updated** [Resources for Hospitals and Healthcare Professionals Preparing for Patients with Suspected or Confirmed COVID-19](#)
- **Updated** [Pregnancy and Breastfeeding](#)
- **Updated** [Standard Operating Procedure \(SOP\) for Triage of Suspected COVID-19 Patients in non-US Healthcare Settings: Early Identification and Prevention of Transmission During Triage](#)
- **Updated** [Preparing for COVID-19: Long-term Care Facilities, Nursing Homes](#)
- **Updated** [Social Media Toolkit](#)
- **Updated** [Public Health Communicators: Get Your Community Ready](#)
- **Updated** [Interim U.S. Guidance for Risk Assessment and Public Health Management of Healthcare Personnel with Potential Exposure in a Healthcare Setting to Patients with Coronavirus Disease 2019 \(COVID-19\)](#)
- **Updated** [Testing for COVID-19](#)
- **Updated** [Clinical Questions About COVID-19: Questions and Answers](#)
- **Updated** [COVID-19 Travel Recommendations by Country](#)
- **Updated** [World Map](#)
- **Updated** [Cases in the U.S.](#)
- **Updated** [Testing in the U.S.](#)
- **New** [Data Visualization](#)
- **New** [Cleaning and Disinfecting for Non-Emergency Transport Vehicles](#)
- **Updated** [Cleaning and Disinfecting Your Facility](#)
- **Updated** [Groups at Higher Risk for Severe Illness](#)
- **Updated** [Interim Guidelines for Collecting, Handling, and Testing Clinical Specimens from Persons](#)

You can also keep up with CDC updates on Coronavirus Disease 2019 by [signing up for email updates](#), [syndicating available content](#), and subscribing to [Coronavirus Disease 2019 RSS Feed](#).

Charles County Public Schools Briefing 4-17-2020
COVID Charles County

48-hour Priorities:

- Maintaining instructional continuity
- Expanding and maintaining food service
- Expanding and maintaining WiFi service

Meals:

CCPS distributed 5214 meals on 4/16/20. This amount was down -78 from 4/15/20. All sites saw a decline in meals distributed, but Westlake HS and JC Parks were the highest distribution sites.

No meal distribution on Saturday or Sunday.

Closure:

School closure through at least 4-24-20.

Dr. Salmon, MD State School Superintendent to speak today at the Governor Hogan's 2:30 PM press conference and provide an update.

Instruction:

New instructional packets are available for pickup starting today (Friday, April 17th) and next week at the meals distribution centers. Distribution today went very smoothly.

Community Wifi:

All four sites are up and running and seeing use. CCPS in process of 3 other additional WiFi sites.

Misc:

Respectfully submitted by Jason Stoddard and Michael Meiser



Charles County

Volunteer Firemen's Association, Inc.

Post Office Box #21, La Plata, Maryland 20646

April 17th, 2020

Re: Volunteer Fire/EMS Brief

Items Being Worked On:

- Reduction of Force Policy – *Information gathering occurring.*
- Station Health Screening Policy – *Set to go in Special Order today.*

Stations/Apparatus:

- No Contamination issues at Fire Stations
- No Apparatus with any contamination issues.
- No Service Deliverability Issues with Apparatus O.O.S.

Personnel - 22 Members across 3 Stations (6 Positive / 2 Negative):

- Fire Station 3 – 1 Member in 14 Day Isolation – Tested Positive 4/16/2020
- Fire / EMS Station 11 - 2 Members -2 Due to Family Members being Quarantined
 - o - 3 Members Due to potential exposure from another patient.
- Fire / EM Station 12 – 16 members due to a Positive Member in the Station (Currently 5 Positive/2 Negative)

Incidents/Call Volume:

- No Major Incidents to Report related to COVID-19
 - Increase of Responses to SagePoint over the past 5 days.
 - Yesterday's EMS Call Volume was average, and Fire Call Volume was below average
- 59 Ems Related Incidents ----- 10 Fire Related Incidents

Other Information:

- Viral Triage Training Video has been completed and posted
- New PPE Burn Rate Tracking tool created and set to start using next week.
- Pushing out Peer Support Information again this week.

Respectfully Submitted,

Mark A. Kaufmann, Jr
County Fire Chief, Charles County Maryland