

Charles County COVID-19

Incident Action Plan



Operational Period

From		To
4/4/20		4/7/20
8:00	-	8:00

Changes in Yellow

This document is not Confidential but some of the information may be SENSITIVE

INCIDENT OBJECTIVES (ICS 202)

1. Incident Name Charles County COVID-19	2. Operational Period	Date From: 4/4/20 Time From: 8:00	Date To: 4/7/20 Time To: 8:00
3. Objectives			
A. Ensure the safety and overall health and well-being, including mental health of the residents, county employees, and responders, throughout this incident.			
B. Conduct surveillance of COVID-19 cases in collaboration with the health department, hospital, physicians, and other health care providers.			
C. Maintain timely, accurate and uniform communications with residents, employees and first responders as well as partners in the tri-County and National Capital Region and the state of Maryland.			
D. Prepare for and handle the human reaction crisis contingencies in long terms.			
E. Prepare for long term order maintenance.			
F. Prepare for and sustain our communities' hierarchy of needs throughout this incident.			
G. Determine trigger points for Continuity of Operations for all agencies, including government, public safety, schools, hospital, and other critical infrastructure systems.			
H. Ensure all practical steps to "Slow the Spread" of transmission of COVID-19.			
4. Operational Period Command Emphasis			
Ambulance driver should be contained. Close the door between the cab and compartment. Plastic with duct tape works if you don't have a door.			
General Situational Awareness			
"Stay Back Jack! Social Distancing is a Thing Now. 6 Feet Apart to Start!"			
5. Site Safety Plan Required? <input type="checkbox"/> Yes <input checked="" type="checkbox"/> No Approved Site Safety Plan(s) Located at:			
6. Attachments (check if attached)			
<input checked="" type="checkbox"/> ICS 203 <input type="checkbox"/> ICS 207 <input type="checkbox"/> ICS 204 <input checked="" type="checkbox"/> ICS 208 <input type="checkbox"/> ICS 205 <input type="checkbox"/> Map/Chart <input checked="" type="checkbox"/> ICS 205A <input type="checkbox"/> Weather <input type="checkbox"/> ICS 206 <input type="checkbox"/> Forecast/Tides/Currents	<input checked="" type="checkbox"/> <input type="checkbox"/> <input type="checkbox"/> <input type="checkbox"/>	ICS 214 _____ _____ _____ _____	
7. Prepared by: Name: <u>Joe Hoffmaster</u> Position/Title: <u>PSC</u> Signature: _____			
8. Approved by Incident Commander: Name: <u>Michelle Lilly</u> Signature: _____			
ICS 202	IAP Page <u>2</u>	Date/Time: <u>April 3, 2020 @14:15</u>	

ORGANIZATION ASSIGNMENT LIST (ICS 203)

1. Incident Name <div style="display: flex; justify-content: space-between;"> Charles County COVID-19 </div>		2. Operational Period <div style="display: flex; justify-content: space-between;"> <div> Date From: 4/4/20 Time From: 8:00 </div> <div> Date to: 4/7/20 Time to: 8:00 </div> </div>																									
3. Incident Commander and Staff <div style="display: flex;"> <div style="flex: 1;"> UC UC Deputy Deputy Safety Officer Public Information Officer Intell Officer </div> <div style="flex: 1;"> Dr. Lowry Michelle Lilly Melanie Gardner Tony Rose John Filer Jennifer Harris Donna Fuqua Jason Stoddard </div> </div>		7. Operations Section <div style="display: flex;"> <div style="flex: 1;"> Chief Deputy a. Branch I Branch Director Deputy DSS Liaison Officer Hospital Nursing Homes Health Care Providers Rehab Centers Assisted Living </div> <div style="flex: 1;"> Public Health Ranston Harvey Mary Lilly Raena Barnes Robbie Jones Bill Grimes John Filer need to fill need to fill need to fill need to fill </div> </div>																									
4. Agency Representative <table border="1" style="width: 100%; border-collapse: collapse;"> <thead> <tr> <th style="width: 20%;">Agency</th> <th style="width: 80%;">Name</th> </tr> </thead> <tbody> <tr><td>Intell officer Deputy</td><td>Mike Meiser</td></tr> <tr><td>Lifestyles</td><td>Sandy Washington</td></tr> <tr><td>Public Schools</td><td>Mike Meiser</td></tr> <tr><td> </td><td> </td></tr> <tr><td> </td><td> </td></tr> <tr><td> </td><td> </td></tr> <tr><td> </td><td> </td></tr> <tr><td> </td><td> </td></tr> <tr><td> </td><td> </td></tr> <tr><td> </td><td> </td></tr> <tr><td> </td><td> </td></tr> </tbody> </table>		Agency	Name	Intell officer Deputy	Mike Meiser	Lifestyles	Sandy Washington	Public Schools	Mike Meiser																	<div style="display: flex;"> <div style="flex: 1;"> b. Branch II Branch Director Deputy DES EMS Vol EMS Vol Fire Logistics </div> <div style="flex: 1;"> Public Safety Mark Kaufmann Jr. Scott Herbert D J Mills Steve Finch Andrew Spalding Mitchell Lewis Scott Herbert Scott Herbert </div> </div>	
Agency	Name																										
Intell officer Deputy	Mike Meiser																										
Lifestyles	Sandy Washington																										
Public Schools	Mike Meiser																										
5. Planning Section <div style="display: flex;"> <div style="flex: 1;"> Chief Deputy Resource Unit Situation Unit Documentation Unit Demobilization Unit Human Resources </div> <div style="flex: 1;"> Joe Hoffmaster Bill Smith need to fill need to fill </div> </div>		<div style="display: flex;"> <div style="flex: 1;"> c. Branch III Branch Director Deputy La Plata Police MD State Police DNR MdTA </div> <div style="flex: 1;"> Law Enforcement Chris Schmidt Cari Baker Chris Becker Thomas Quade Catherine Meddelin Brian Lawrence </div> </div>																									
Technical Specialists (name / specialty) <div style="display: flex;"> <div style="flex: 1;"> </div> <div style="flex: 1;"> </div> </div>		<div style="display: flex;"> <div style="flex: 1;"> d. Branch IV Branch Director Deputy SMECO Grocery </div> <div style="flex: 1;"> Infrastructure Jennifer Raley </div> </div>																									
6. Logistics Section <div style="display: flex;"> <div style="flex: 1;"> Chief Deputy Support Branch Donations Supply Unit Facilities Unit Ground Support Unit </div> <div style="flex: 1;"> Nick Ellis Lori Cherry Ed Tucker Nick Ellis </div> </div>		<div style="display: flex;"> <div style="flex: 1;"> Propane Natural Gas </div> <div style="flex: 1;"> </div> </div>																									
Service Branch Service Branch Dir. Communications Unit Medical Unit Security Unit Food Unit		10. Finance Section <div style="display: flex;"> <div style="flex: 1;"> Chief Deputy Time Unit Procurement Unit Comp/Claims Unit Cost Unit </div> <div style="flex: 1;"> Jennifer Adams </div> </div>																									
9. Prepared by: Name: <u>Joe Hoffmaster</u> Position/Title: <u>PSC</u> Signature: _____																											
ICS 203		IAP Page <u>3</u> Date/Time: <u>April 3, 2020 @ 14:15</u>																									

ORGANIZATION ASSIGNMENT LIST (ICS 203)

1. Incident Name <div style="text-align: center;">Charles County COVID-19</div>		2. Operational Period <div style="display: flex; justify-content: space-between;"> <div> Date From: 4/4/20 Time From: 8:00 </div> <div> Date to: 4/7/20 Time to: 8:00 </div> </div>	
3. Incident Commander and Staff		7. Operations Section	
UC	Dr. Lowry	Chief	
UC	Michelle Lilly	Deputy	
Deputy	Melanie Gardner		
Deputy	Tony Rose		
Safety Officer	John Filer	a. Branch V	Governance
Public Information Officer	Jennifer Harris Donna Fuqua		
Intell Officer	Jason Stoddard		
4. Agency Representative			
Agency	Name	Charles County Govern.	Michele Lilly
Intell officer Deputy	Mike Meiser	Town of LaPlata	Chris Becker
Lifestyles	Sandy Washington	Town of Indian Head	Ryan Hicks
CC Public Schools	Michael Meiser		
		b. Branch VI	Business
		Branch Director	Darre'll Brown
		Deputy	Marcia Keeth
		Economic Development	Darre'll Brown
		Chamber of Commerce	Bonnie Grady
5. Planning Section		c. Branch VII	
Chief	Joe Hoffmaster	Branch Director	
Deputy	Bill Smith	Deputy	
Resource Unit			
Situation Unit	need to fill		
Documentation Unit	need to fill		
Demobilization Unit			
Human Resources			
Technical Specialists (name / specialty)		d. Branch VIII	
		Branch Director	
		Deputy	
6. Logistics Section			
Chief	Nick Ellis		
Deputy	Lori Cherry	e. Branch IX	
Support Branch			
Donations	Ed Tucker		
Supply Unit			
Facilities Unit	Nick Ellis	10. Finance Section	
Ground Support Unit		Chief	Jen Adams
Service Branch		Deputy	need to fill
Service Branch Dir.		Time Unit	
Communications Unit		Procurement Unit	
Medical Unit		Comp/Claims Unit	
Security Unit		Cost Unit	
Food Unit			
9. Prepared by: Name: <u>Joe Hoffmaster</u> Position/Title: <u>PSC</u> Signature: _____			
ICS 203	IAP Page <u>4</u>	Date/Time: <u>April 3, 2020 @ 14:15</u>	

SAFETY MESSAGE/PLAN (ICS 208)

1. Incident Name Charles County COVID-19	2. Operational Period Date From: 4/4/20 Date To: 4/7/20 Time From: 8:00 Time To: 8:00
3. Safety Message/Expanded Safety Message, Safety Plan, Site Safety Plan:	
<p style="color: blue;">"Stay Back Jack! Social Distancing is a Thing Now. 6 Feet Apart to Start"</p>	
1. Total identified PUI's transported to date: 165 Total # of patients testing positive : 18	
2. PPE stockpiles remain stable with an estimated supply range of 10+ days based on current call volumes.	
3. Revision to EMSOP Special Order 2020-01 Version 3.0 has been completed and disseminated to staff.	
4. As this is a rapidly changing landscape, leaders should review any changes with their personnel each morning.	
5. With the implementation of the most recent update of special Order 2020-01 V 3.0, personnel should continue to perform wellness checks twice a day as prescribed in the SO as well as decon apparatus frequently.	
6. Personnel who report having a fever, sore throat, cough or other respiratory related symptoms should stay at home and self-isolate until they are symptom free for a period of 72 hours.	
7. Personnel who have recently travelled to a suspected COVID-19 country or have taken a cruise which ported at a COVID-19 infected region should not report to work. Those personnel are being asked to self-isolate at home for a period of 14 days.	
8. Personnel with facial hair should be aware of the NIOSH requirements for properly fitting filtering facepiece respirators in relation to their specific facial hairstyles. A CDC infographic was disseminated to staff with compliance guidance. Those with facial hair not in compliance drastically increase their risk of exposure even when using an N95 mask.	
9. The County's Peer Support Team has been activated and will make weekly wellness checks with our County's first responders. We are working through the logisitcs but will provide an email address and phone number to contact the team. Will diiseminate when we have the contact information.	
10. Please remember that PPE caches are for EVERYONE. We are all in this together so there is no longer career and volunteer PPE caches.	
11. Per Special Order 2020-01 Version 3.0, limit the number of first responders having patient contact. This means no more ride-alongs, no more students and no more 3rd's.	
12. Seal off the driver from the patient compartment area. (close door, or plastic with duct tape)	
13. We ae starting to see a broad spectrum of calls for service that are turning out to have PUI's involved. Calls like MVC's, CVA's, Falls and even Fires. Please be aware and ask each patient or person you contact if they have a fever, cough or other related symptoms.	
Approved Site Safety Plan(s) Located At: <input type="checkbox"/> Yes <input checked="" type="checkbox"/> No	
5. Prepared by: Name: <u>John Filer</u> Title: <u>Safety Officer</u> Signature: _____	
ICS 208	IAP Page _____ Date/Time: <u>April 4, 2020</u> @ <u>14:15</u>

ACTIVITY LOG (ICS 214)

[illegible]

ACTIVITY LOG (ICS 214)

[illegible]



Safety Officer's Report Charles County EOC

04-03-20

John Filer
Chief of EMS and SOD
Charles County Department of
Emergency Services

Today's Safety Message: "Stay Back Jack! Social Distancing is a Thing Now. 6 Feet Apart to Start!"

Total number of PUI's transported to date: 165

Total number of first responder's on self-isolation: 7

Total number of first responders on quarantine: 10

Total number of patients transported by EMS testing + for COVID: 18

Daily Estimated PPE Burn Rate: 20 sets/day



10425 Audie Lane
La Plata, MD 20646



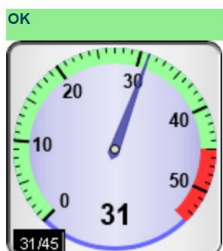
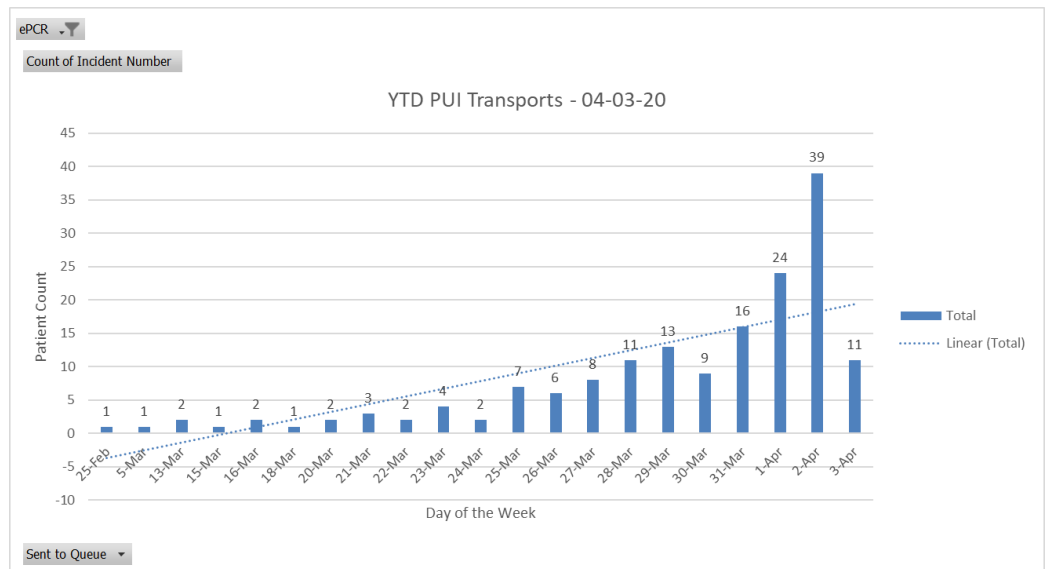
301-399-1143



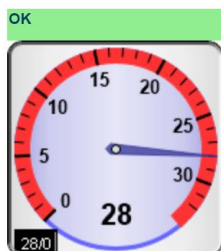
DESsafety@charlescountymd.gov



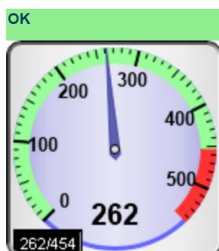
www.charlescountymd.gov



Charles County DES - All Incidents



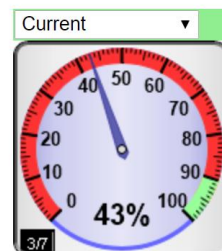
Charles County - Coronavirus "PUT" nCoV (CAD)



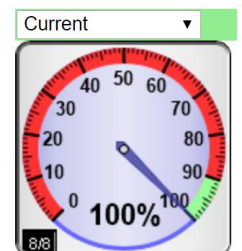
(DRAFT) Charles County EMS - HTSD



Charles County EMS - Low ALS Resource



Charles County EMS - Hospital Drop Time (30 Min)



Charles County EMS - EMTALA

STAY BACK, JACK!

SOCIAL DISTANCING IS A THING NOW.



SPEAK LOUDER. USE AIR FIST BUMPS.

Brought to you by The DUKE CANNON SUPPLY CO. Commission for Proper Hygiene.

Cleaning and Disinfecting 3M™ Scott™ Reusable Full Facepiece Respirators Following Potential Exposure to Coronaviruses

Description

During coronavirus outbreaks, some First Responder organizations may assign reusable respirators to workers providing care for persons with suspected cases of coronavirus. This document contains considerations related to cleaning and disinfecting certain 3M Scott respirators that will be reused after potential exposure to coronaviruses.

The 2008 U.S. Centers for Disease Control and Prevention (CDC) publication [Guideline for Disinfection and Sterilization in Healthcare Facilities](#)¹ (updated May 2019) includes information on disinfecting equipment and surfaces potentially contaminated by coronaviruses. The CDC investigated many chemicals and cited several chemical germicides as being effective for coronaviruses, when used as indicated in the product user instructions. In regions outside of the United States, where EPA-registered disinfectants may be unavailable, this CDC publication will be most helpful in addition to considering all applicable local guidance for your region as it relates to disinfection for coronaviruses.

More recently, the CDC has published [Interim Infection Prevention and Control Recommendations for Patients with Suspected or Confirmed Coronavirus Disease 2019 \(COVID-19\) in Healthcare Settings](#)² indicating that EPA-registered, hospital-grade disinfectants are appropriate for SARS-CoV-2 in healthcare settings. The United States Environmental Protection Agency (EPA) published [List N: Disinfectants for Use Against SARS-CoV-2](#)³. It is a list of EPAs registered antimicrobial products for use against novel coronavirus SARS-CoV-2, the cause of COVID-19 as a reference for specific disinfectants that can be used against coronaviruses.

NOTE: 3M Scott relies on the expertise of the CDC and EPA with respect to microbiological efficacy and has not evaluated the effectiveness of these agents with regards to inactivating viruses on 3M Scott equipment.

3M Scott has tested one of the CDC cited chemicals for compatibility with respirator materials. The full facepieces listed in Appendix 1 were tested with sodium hypochlorite (at a free chlorine concentration of 5,000 ppm) for a 1-minute dwell time. These tests confirmed that this chemical will have limited detrimental effect on respirator materials when used at the stated concentration, for the stated dwell time, following the cleaning directions provided in the respirator Operating and Maintenance Instructions and as described herein.

3M Scott does not recommend cleaning or disinfecting of filter media (e.g., flexible disc style filters, pre-filter pads, etc.). Some 3M Scott particulate filters however (e.g., 7422-FP1, CBRN Cap-1, MPC Plus, etc.) have a hard-plastic case surrounding the filter media. This hard case can be cleaned by wiping the surface with a damp cloth soaked in disinfecting solution until visibly wet for the appropriate contact time and then removing the disinfecting solution with a clean, water-soaked cloth and air drying. Do not allow the disinfecting solution to reach the internal filter media and do not submerge the hard-case filters in the disinfecting solution. Utilize the same disinfecting solutions as recommended for 3M Scott full facepieces.

NOTE: The guidance in this Technical Bulletin may exceed the directions found in certain Operating and Maintenance Instructions and is therefore intended only for cleaning and disinfecting the specified respirators following potential exposure to coronaviruses. Note that respirator full facepiece components may experience detrimental effects over time with prolonged or extended use of disinfecting products. As discussed in the product Operating and Maintenance Instructions, users must inspect their respirator prior to each use. If you discover any signs of damage, remove the full facepiece from

service and either discard and replace or repair as appropriate, following the guidance in the product Operation and Maintenance Instructions.

Your facility should review this information thoroughly prior to selecting a disinfecting product for your equipment and specific application. Follow the hygiene and infection control practices established by your employer for the targeted organisms, including coronaviruses.

Please always refer to the latest information from trusted sources such as the World Health Organization ([WHO](#)), the U.S. Centers for Disease Control and Prevention ([CDC](#)), the U.S. Occupational Safety and Health Administration ([OSHA](#)) and the European Centre for Disease Prevention and Control ([ECDC](#)) regarding selection, use, maintenance and cleaning of personal protective equipment.

Cleaning and Disinfecting 3M Scott Full Facepieces Listed in Appendix 1

- 1) Cleaning is recommended after each use. Nitrile or vinyl gloves should be worn during cleaning as well as other personal protective equipment (PPE) as indicated.
- 2) Remove any filters or cartridges. The full facepiece may be further disassembled as necessary.
- 3) Remove accessories as necessary and as directed in the Operating and Maintenance Instructions.
- 4) Inspect the full facepiece per the Operating and Maintenance Instructions to identify any damage or excessive wear. Repair or replace the full facepiece as necessary.
- 5) Clean the full facepiece by immersing it in warm water not to exceed 110 °F (43 °C), and scrub with soft brush until clean. Add neutral detergent if necessary. Do not use cleaners containing lanolin or other oils. **NOTE:** Solvents and strong detergency may damage 3M Scott full facepiece respirators and respirator components and should not be used for cleaning.
- 6) Rinse thoroughly with fresh warm water.
- 7) Disinfect the full facepiece with the 5,000-ppm hypochlorite solution either by spraying to completely cover all surfaces or full immersion in a container of solution for 1-minute of dwell time. Do not exceed the concentration and dwell time mentioned above.
- 8) Rinse thoroughly with fresh warm water.
- 9) Air dry in a non-contaminated area or follow the directions provided in the Operating and Maintenance Instructions provided with the full facepiece.
- 10) Inspect and reassemble the respirator as described in the Operation and Maintenance Instructions.

Glossary of Terms^{4,5}

Cleaning: Removal of soil (organic and inorganic) and foreign material from objects and surfaces. This is typically accomplished with water and mechanical action. Neutral detergents may be used to assist the process.

NOTE: Failure to remove soil and foreign material (face oils, etc.) from an object can make the disinfecting or sterilizing process ineffective.

Sanitizing: A process to reduce the number of microorganisms on an inanimate object to “safe” levels (but may not destroy disease-producing organisms). Dishes and eating utensils are normally sanitized.

Dwell time: For the purposes of this document, dwell time and contact time have the same meaning when referring to the length of time that a disinfecting solution remains in contact with a respirator facepiece.

Operating and Maintenance Instructions: For the purposes of this documents, this term has the same meaning as User Instructions.

Disinfecting: A process of inhibiting or destroying disease-producing microorganisms (but may not kill bacterial spores). It usually involves the use of chemicals, heat, and/or ultraviolet light and is divided into three categories: high, intermediate and low-level disinfection.

Sterilizing: A validated process to render a product free of all forms of viable microorganisms, including bacteria, viruses, spores, and fungi.

Before using any of the chemicals or information detailed herein, you must evaluate it and determine if it is suitable for your intended use. You assume all risks and liability associated with such use. 3M Scott makes no warranties relating to the efficacy of any of the products detailed herein in preventing the spread and/or contraction of coronaviruses. 3M Scott will not be liable for any loss or damage arising from any information contained herein, whether direct, indirect, special, incidental or consequential, regardless of the legal or equitable theory asserted, including warranty, contract, negligence or strict liability.

Technical information provided by 3M Scott is based on experience and/or test data believed to be reliable, but the results may not be relevant to every user's application. For this reason, 3M Scott does not accept any responsibility or liability, direct or consequential, arising from reliance upon any information provided. The user should determine the suitability of any disinfectant product for compatibility for use with 3M products.

If you have any questions or concerns, please contact your local 3M Scott representative or Technical Service at 800-243-4630.

Appendix 1: 3M™ Scott™ Full Facepieces

- 3M™ Scott™ AV-2000 Facepiece
- 3M™ Scott™ AV-3000 Facepiece
- 3M™ Scott™ AV-3000 with SureSeal™ Facepiece
- 3M™ Scott™ AV-3000 HT Facepiece
- 3M™ Scott™ Weld-O-Vista Facepiece

References

- 1) Guideline for Disinfection and Sterilization in Healthcare Facilities, 2008; updated 2009. United States Centers for Disease Control. William A. Rutala, Ph.D., M.P.H., David J. Weber, M.D., M.P.H. and the Healthcare Infection Control Practices Advisory Committee (HICPAC). 2008. <https://www.cdc.gov/infectioncontrol/pdf/guidelines/disinfection-guidelines-H.pdf>
- 2) Interim Infection Prevention and Control Recommendations for Patients with Suspected or Confirmed Coronavirus Disease (COVID-19) in Healthcare Settings. Coronavirus Disease (COVID-19). <https://www.cdc.gov/coronavirus/2019-ncov/infection-control/control-recommendations.html>
- 3) EPA's Registered Antimicrobial Products for Use Against Novel Coronavirus SARS-CoV-2, the Cause of COVID-19. United States Environmental Protection Agency. 03/03/2020. <https://www.epa.gov/pesticide-registration/list-n-disinfectants-use-against-sars-cov-2>
- 4) Rutala, WA. American Journal of Infection Control. APIC Guideline for Selection and Use of Disinfectants. Vol. 24, No. 4, pp. 313-342, August 1996.
- 5) Rutala, WA. CDC. Guideline for Disinfection and Sterilization in Healthcare Facilities. 2008.

Personal Safety Division

3M Center, Building 235-2W-70
St. Paul, MN 55144-1000

3M PSD products are
occupational use only.

In United States of America

Technical Service: 1-800-243-4630
Customer Service: 1-800-328-1667
3M.com/workersafety

In Canada

Technical Service: 1-800-267-4414
Customer Service: 1-800-364-3577
3M.ca/Safety

© 3M 2020. All rights reserved.

3M is a trademark of 3M Company and its affiliates.
Used under license in Canada. All other trademarks
are property of their respective owners.
Please recycle.





PUBLIC HEALTH BRANCH BRIEFING COVID-19 PANDEMIC RESPONSE

April 3, 2020

INFECTIOUS DISEASE

CASE COUNT—CHARLES COUNTY

As of 4/3/2020, total case count for Charles County is 106.

- *Waiting on lab reports and line lists from MDH to update confirmed case count for Charles County.*
- *Contact tracing efforts are continuous.*

CALL CENTER UPDATE

- Call center transferred to remote cell operations.
- Operation time: 0800 to 2200.
- The main number for the call center will be routed to 10 cells. The number to call stays the same: 301.609.6717
- Volume for new system is approximately 60 call per day.

RESOURCE DISTRIBUTION

New requests will be reported on 4/6/20.

VOLUNTEERS

MARYLAND MEDICAL RESERVE CORPS

4 new responders accepted into unit 03/31/2020

1 new responder accepted 04/01/2020

TESTING

VEIP TESTING SITE UPDATE

- 35 kits were available; 35 people were tested during the period of 1000 and 1400
- Ran one station per lane today; three lanes
- 14 people were turned away due to no script/appointment in CRISP
- The operation ran smoothly; especially with the addition of improved signage, traffic control measures, and continuity of testing teams.
- All appointments were scheduled prior to initial site setup today.
- The number of kits vary per operational period based on availability of kits.
- We have begun staff coordination for enhanced operation that will run two stations per lane.

PARTNER/STAKEHOLDER OUTREACH

ALL PARTNER CALL

There were very few questions – other than concerns about PPE.

LTC/AL CALL

The Charles County Department of Health hosted The Long-Term Care and Assisted Living Partner call on

4/2/2020. The primary theme of the call was maintaining Mental Health Awareness during the COVID-19 pandemic.

EPIDEMIOLOGY AND SURVEILLANCE

SURVEILLANCE OF ED HOSPITAL DATA AND URGENT CARE THROUGH ESSENCE

ESSENCE data for urgent care utilization at Patient First in Waldorf saw a decrease in patients from 31 on Wednesday, April 1 to 17 on Thursday, April 2. 17 patients presented for a multitude of symptoms. All were discharged to home for self-care. 4 presented with ILI. Diagnoses included sinusitis and pharyngitis.

ESSENCE ED visit data for the University of Maryland Charles Regional Medical Center also shows no high utilization alert or warning for 4/2. There were 72 ED patients on 4/2. The epidemiologist read the reports on each case where the chief complaint included flu like or possible COVID-19 symptoms (N=19 for 4/2). COVID-19 case or COVID-19 PUI was listed in the provider diagnosis and notes for 5 cases. ESSENCE does not indicate any admissions; however, the discharge disposition was left as “none” for 16 people. No deaths were noted in ESSENCE ED data for 4/2.

SURVEILLANCE OF EMS CALL DATA AND ALERTS

The epidemiologist monitors the Charles County DES First Watch trigger alerts. There has been an increase in trigger alerts for COVID-19 persons under investigation.

3/28: 10 alerts

3/29: 13 alerts

3/30: 21 alerts

3/31: 25 alerts

4/1: 30 alerts

4/2: 53 alerts

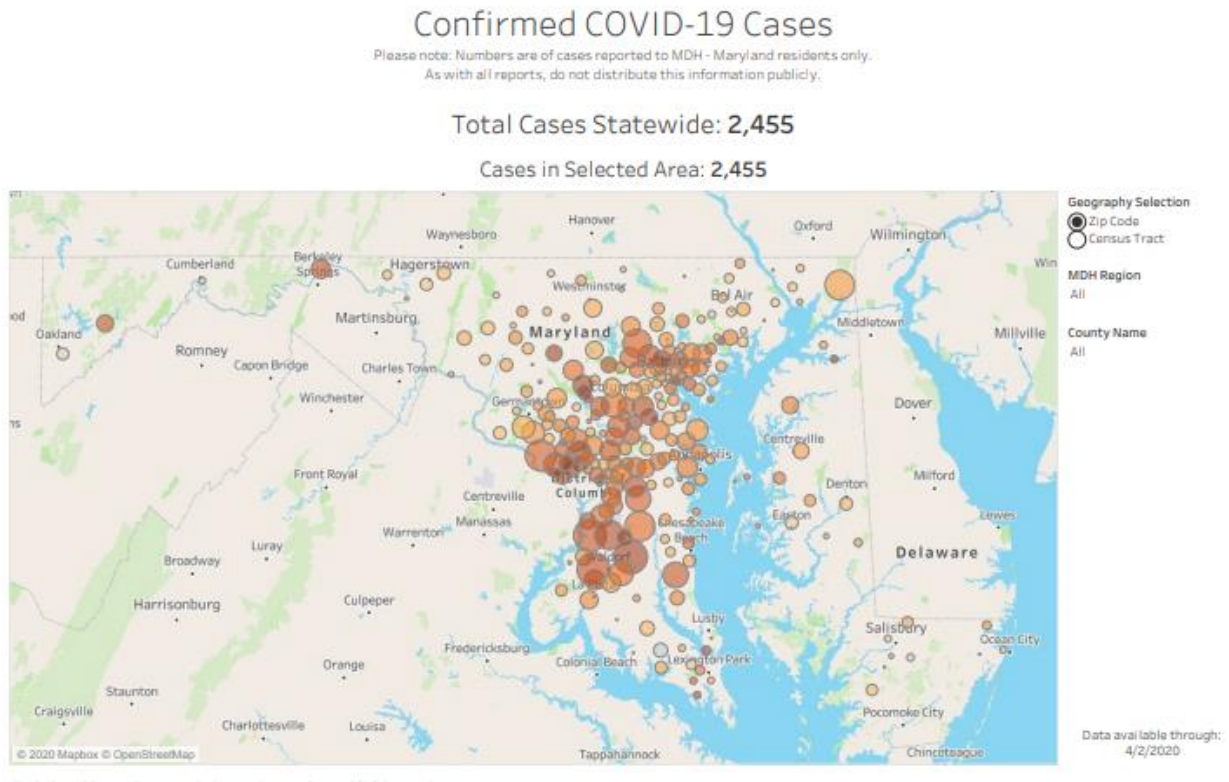
EPI SURVEILLANCE PROFILE FOR STATE

Case Investigation, Surveillance, and Infectious Disease Response (Blythe)

- 1) Latest case counts – total cases (2758) (427 new); trend for new cases more women and >65; higher in Baltimore metro
- 2) Of total cases – 1,435
 - a) Age distribution:
 - i) under 18 years -1%
 - ii) in 18-64 age range -78%
 - iii) in 65+ age range -21%
 - b) Geographic distribution (%) – Of total cases
 - i) National Capital – 43%
 - ii) Baltimore Metro area – 48%
 - iii) Eastern Shore -2%
 - iv) Southern – 5%
 - v) Western – 1%
 - c) Cumulative Hospitalizations –664 (24%); currently hospitalized 82
 - d) Deaths – 42 deaths (2%)
 - i) 159 released from isolation
 - ii) 60 institutions have at least one case

ADDITIONAL INFORMATION

Heat map of COVID cases in Maryland by zip code – *provided through the Chesapeake Regional Information System for our Patients (CRISP)*



MEDIA, SOCIAL MEDIA AND WEBSITE

- No media attended the VEIP test site today.
- PIO is examining additional strategies to push preventive care messages to the public.
- Kudos to the Charles County Government website developer for creating a page for CCODH. The link to the website is <https://www.charlescountymd.gov/government/other-agencies/charles-county-department-of-health>

MISCELLANEOUS

Commissioner Collins visited the VEIP test site today and thanked everyone for the work they are doing to help. We let him know that we had already requested to have the number of kits increased if/when available.

Respectfully submitted by Charles County PHEP

April 3, 2020

DAILY REPORT TO DES FROM CHARLES REGIONAL MEDICAL CENTER

- The trigger point for starting up the tent operations outside of the hospital has not yet been activated. Activation will be determined by both staffing levels and patient census presenting to the ED.
- The hospital census for today 4/3/2020 = 80
- Confirmed positive cases of COVID-19 patient admissions in-house 4/3/2020 = 18
- PUI's in-house 4/3/2020 = 0
- There was 0 patient that tested Positive for COVID-19 that was brought in by EMS on 4/03/2020
- There were 0 PUI brought in by EMS 4/03/2020 of which the test result has not yet been received
- CRMC has dedicating one unit specifically to be for COVID-19 positive patients or for PUI's that have been admitted to the hospital. The dedicated COVID-19 unit is on 3 south until further notice. That 3 South COVID-19 unit has been fully activated as of 4/3/2020.
- Number of ICU beds in-house is 10. There are currently 10 patients in the ICU, with an additional surge on another unit of 3 ICU patient. Total in-house ICU patients to include surge for 4/3/2020 = 13

- Number of ventilators owned by CRMC = 17. As of 4/3/2020 there are 7 patients on ventilators all 7 are ventilated patients are positive for COVID-19.

Intelligence Briefing 4-3-2020
COVID Charles County

Updated Infection Numbers: As of 0933 hrs.

Total worldwide: 1,039,166 **+73,920 since the 4-1-20 brief.**

Worldwide increase of confirmed cases by 24-hour period over the last 6 days

3-25/26	3-26/27	3-27/28	3-28/29	3-29/30	3-30/31	3-30/4-1	4-1/4-2	4-2/3
+56,337	+119,753	+59,541	126,150	56,378	68,578	76,079	79,559	73,920

Total fatalities worldwide: 55,092 **+5,856 since the 4-2-20 brief**

Total confirmed cases in the US: 245,646 **+28,383 since the 4-2-20 brief**

US increase of confirmed cases by 24-hours period over the last 6 days

3-25/26	3-26/27	3-27/28	3-28/29	3-29/30	3-30/31	3-31/4-1	4-1/4-2	4-2/3
14,441	30,769	18,853	19,898	18,769	41,111	24,215	27,174	28,383

Analysis note: While number continue to rise, positive tests being recorded today were sampled up to 10 days ago. In essence, the data we are recording today could be as much as 10 days old. This must be kept in mind as we determine the scope and magnitude of the today's situation.

Total fatalities in US: 56,068 **+917 since the 4-2-20 brief**

Maryland Numbers: As of 1000 hrs. via <https://coronavirus.maryland.gov/>

Total confirmed cases in State in of MD: 2,758 **+427 since the 4-2-20 brief**

Total tested in the State of MD: **20,932 +2,042 over 4-2-20**

Percent of those test that test positive: **13.1%**

Total Fatalities in State of MD: 42 **+6 change since the 4-2-20 brief**

Total Hospitalizations: 664 **Increase of 82 from 4-2-2020**

First Responder Numbers in Charles County:

12 Self-isolation: responder is sick or test positive. **No change**

39 Quarantine: the responder has been exposed and they can't come to work. **No change**

Analysis note: It was reported the COG Fire Chiefs recently changed the definitions of quarantine and self-isolation. Charles County is attempting remain consistent with the direction from the COG Fire Chiefs.

Weather:

Sat, 60-44 Sun, Sunday 64-49 sun, Monday 71-51 Sun

Analysis note: Warm weather will likely mean more people outside, increasing the probability of gatherings. Rainy weather will drive people into their residences. The potential for increased calls for police service exists.

Local:

Nothing to add today

Maryland Update:

Gov. press conference at 1415 4-3-2020

PGPD reports its first positive case

AAPD reports its first positive case

Montgomery County is reporting a critical need for responder PPE

Authorized "essential personnel" child care list continues to grow. There are 130+ providers in Maryland.

https://earlychildhood.marylandpublicschools.org/system/files/filedepot/2/approved_sites_for_epcc_epsa_-_master_list.pdf

About 15,000 Maryland state employees who are required to come into work began receiving increased wages Wednesday, albeit at a lower rate than a previous hazard pay incentive.

Region:

Over 2,530 cases in the NCR as of 0511 4-2-2020

5,527 cases in Maryland, DC, and Virginia as of 1100 on 4-2-2020

VA State Police issue release indicating "they will not be making random stops nor conducting checkpoints" as it related to the VA "stay at home order" MSP issued a similar release several days ago. <https://drive.google.com/file/d/16BW-5faZlfsGmoXp64iQqUuAmgPajNq6/view>

National:

"Travel ban" issues in Oswego, NY <https://tinyurl.com/qkg3rx2>

Anarchist call for "No Rent April" to punish landlords, banks, and utility companies

The U.S. Centers for Disease Control and Prevention (CDC) released new evidence, based on a study in Singapore, that COVID-19 can be **transmitted up to 48 hours before a positive case shows symptoms**. This research underscores that the best way to stop the spread of COVID-19 is through vigilant social distancing, including staying at home except for essential trips.

FDNY reports 6,527 medical calls were run on 4-1-2020

6.6 million Americans filed for unemployment last week

President announced new counter-narcotics operates

The terrorism threat to the US is increased due to diverted attention to COVID emergency
CDC published new recommendation for re-using PPE
Reports of “Zoom Bombing” (hackers entering into video teleconferences to steal information)
has increased.

Local critical infrastructure:

No outages or disruptions are reported or are appear to be likely as of today.

Predications/ Analysis:

- As the confirmed case numbers continue to rapidly ascend the likelihood of jurisdictions issuing “travel bans” increases. Law enforcement should begin researching the constitutionality of these potential edicts and have plans in place for implantation and begin to develop a public communication strategy. Standardizing local “travel authorization documentation” should be explored by the lead jurisdiction having authority.
- Due to diverted attention, the international and domestic terrorism threat is rapidly increasing. Responders should be reminded to remain vigilant and of the DHS guidelines for spotting suspicion activities and terrorism indicators.
- As we enter into the reported peak of this situation communication, along with sharing of individual branch capability and capacity is more important now than ever. “We don’t know what we are going to need to know until we need to know it.”
- First responder organizations should begin surveying members for pre-existing conditions and other complicating medical conditions. Responders found to have pre-existing conditions should be placed in limited citizen contact roles.
- A review of the 179 countries that report COVID-19 cases, only two (South Korea and China) have somewhat “flattened the curve” of NEW infections. Both showed flattening roughly 30 to 45 days after the initial spikes. The initial spike in the US began around 3-18-2020.
- Reduced stability in the supply chain along with increased fear and anxiety can be expected with today’s “stay at home order.”
- After 3 weeks of social distancing and schools being closed non-english speaking communities within Charles County are likely feeling further isolated due to a lack of language specific communications. Direct and increased messaging to Spanish speakers is likely necessary.
- As mass transit continues to shrink in availability, plans should be made to ensure those who rely on it for essential supplies and trips have delivery resources.
- LE and EMS screening protocols should include questions about recent travel to NY, NJ, CT, and FL.
- Immediate attention is needed to direct companies and organization on the proper processes and appropriate contact to use (Donation Manager at the EOC) to donate PPE and cleaning materials to essential personnel

- The next 7 days will likely see a stabilization of a majority of the grocery supply chain. However, the potential for disruption moving forward continues to remain high.
- FOIA and PIA request from media and citizens groups will likely begin to increase the longer this event lasts. “New normal” processes need to be established as soon as possible.
- Lack of child care options will likely add to family stress. Additional resources, activity and options are needed.
- JIC staff should substantially amplify community resource communications
- As we enter the 2nd week of social distancing stress, anxiety, and fear will likely increase. Continuous reminders of patience and focusing on kindness will become increasingly important.
- Many stores restock overnight. Seniors and the vulnerable populations should be strongly encouraged to shop during the early morning hours when supplies are likely to be at their highest.
- As testing increased the confirmed cases in MD will increase. This will likely cause additional life restrictions.
- Supply chain issues will continue and likely increase as further life interruptions and travel restrictions are ordered. The possibility of violence increases as stress increases, especially at grocery stores.
- Commanders of responders and essential staff should have robust plans for potential quarantines and updated continuity of operations including plans for diminished manpower. Further, responder organizations should begin reviewing existing integration plans with the National Guard.
- Obtaining medical supplies and PPE will continue to be an issue for the foreseeable future. All services should use the command ordering process so orders can be tracked.
- The community of Charles County is showing increased signs of pulling together and assisting one another. The JIC should continue to encourage civility and increase positive press of good news stories occurring throughout our community.

Respectfully submitted by Jason Stoddard

Law Enforcement Branch Briefing

COVID-19 Charles County IMT

April 3st, 2020

Buildings:

Charles County Sheriff's Office: District 1 Lobby is closed for scheduled remodeling. The District 1 clerks have moved the CCDC Annex building in the same parking area and that lobby is open as normal. All other buildings have normal public access.

Maryland State Police: Restricted to public

Maryland Transportation Authority: Closed to Public

La Plata Police Department: Closed to the public

Natural Resources Police: Building Closed

Operations:

Charles County Sheriff's Office: Operations have gone to emergency schedule in accordance with a CCSO level 3 All-Hazards activation. Patrol operational periods are 12 hours from 0700-1900 and 1900-0700. All other operations sections running with normal services being provided from modified locations. Services provided have not been reduced or augmented as of now.

Maryland State Police: Operations as normal

Maryland Transportation Authority: Operations as normal

La Plata Police Department: Operations as normal

Natural Resources Police: Operations as normal

PUI:

Charles County Sheriff's Office:

- 1 officer quarantined (positive test); 1 CO positive test (quarantined)
- 7 officers isolated (no test pending)
- 1 CO isolated (test pending)
- 7 civilians isolated (2 test pending)
- 17 Recruits isolated; **Out of county recruit tested positive (St. Mary's).**

Maryland State Police: None local

Maryland Transportation Authority: None local

La Plata Police Department: None local

Natural Resources Police: None local

Crime Stats:

All crime trends are down.

TRU:

Charles County Sheriff's Office: Open and working; triage site for COVID-19 calls for service.

Maryland State Police: Open and working

Maryland Transportation Authority: Open and working

La Plata Police Department: Open and working

Natural Resources Police: Open and working

Call Restrictions:

Charles County Sheriff's Office: None

Maryland State Police: None

Maryland Transportation Authority: None

La Plata Police Department: None

Natural Resources Police: None

Governor's Order Violations

Violation sustained calls for service: 15

Warnings: 14

Charges later: 0

On-scene arrest: 1

PUI Intake at CCDC: 2

Items of Note: (Not for redistribution)

None

***CHANGES IN RED**

Charles County Public Schools Briefing 4-3-2020
COVID Charles County

48-hour Priorities:

- Establishing instructional continuity
- Expanding and maintaining food service
- Maintaining tech support for digital learning
- Maintaining open communication with all stakeholders

Meals:

On 4/2/20 CCPS served 6558 meals to 2186 children at the 11 meal distribution sites. **This total is up +1113 from 4/1/20.**

Today reports of high traffic volume at our 11 meal sites indicate the families are utilizing the service extra hard today as many were coming to pick up the paper packets of school work. We will be sending out a robo call for apologies and work on changes to relieve the problem.

NO MEAL SERVICES SATURDAY OR SUNDAY.

Closure:

School closure through at least 4-24-20.

Instruction:

Online learning went live today. Some difficulty with the online learning platform being overrun with the amount of student volume logging on to watch an introductory video caused an access issue. The problem was being rectified and should be up and running shortly.

Community Wifi:

Mt. Hope mobile WiFi is temporarily down and is hope to be resolved shortly.

Misc:

CCPS BoE is holding a virtual meeting today at 1:30 PM 4/3/20 through WebEX to discuss the SY 19-20 school calendar.

Respectfully submitted by Jason Stoddard and Michael Meiser