

2
0
2
3

FALL MEETING

Economic Development Update

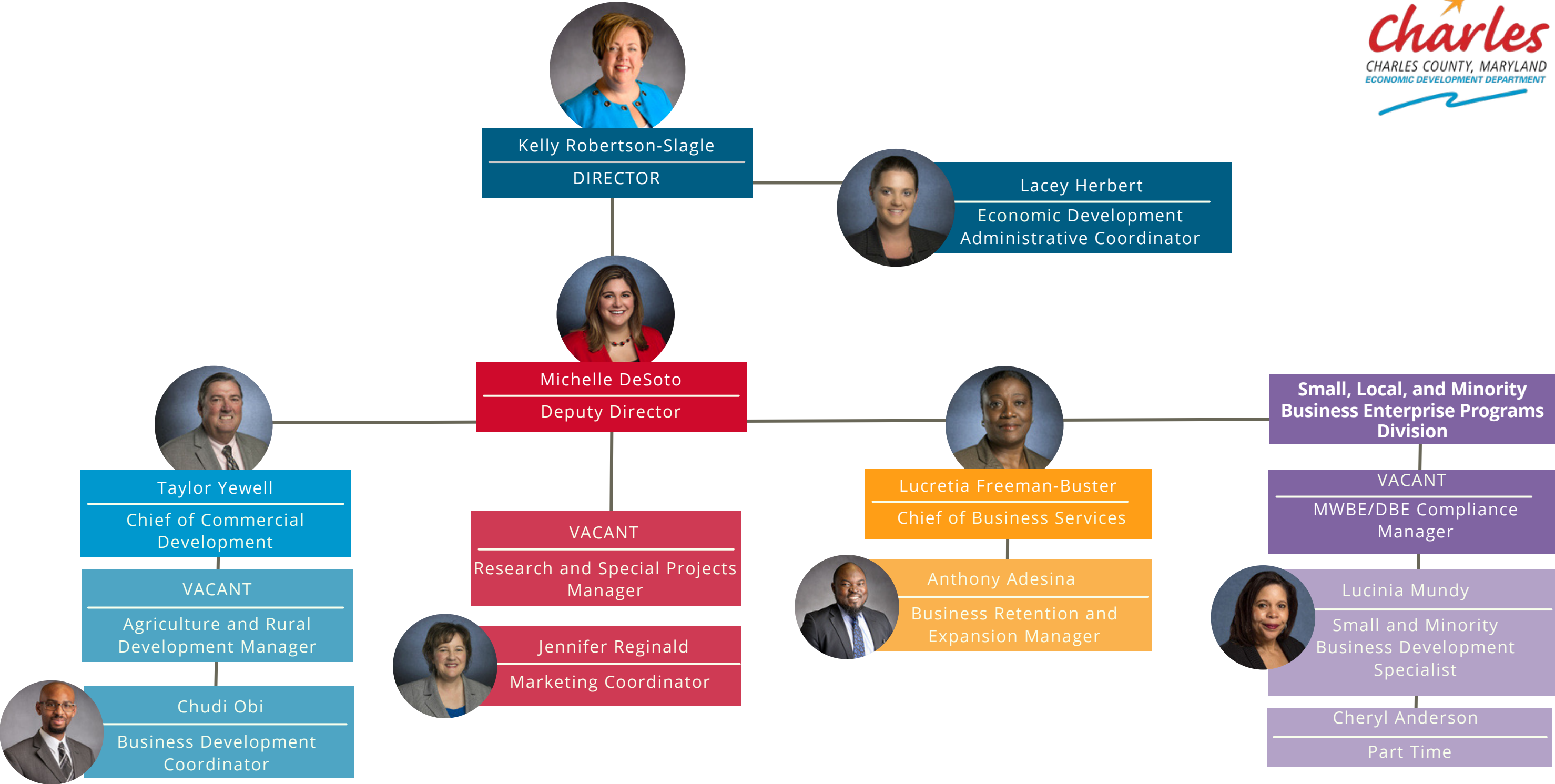


**Charles County Government
Economic Development Department**

10665 Stanhaven Place, Suite 206 | White Plains, MD 20695
301-885-1340 | info@MeetCharlesCounty.com
www.MeetCharlesCounty.com



Economic Development Department





2023 Annual Report Highlights

KELLY ROBERTSON-SLAGLE
DIRECTOR OF ECONOMIC DEVELOPMENT

Business Growth Advantage Program (BGAP)



8

Cohorts successfully completed since the start of the program in 2022.

105

Charles County Businesses have successfully completed the eight week course and have graduated.

2

Alumni Events Held



A total of **\$820,000** in grants have been disbursed.

Business Appreciation Week 2023

- Thank businesses for choosing Charles County as their business location
- Celebrate business milestones/initiatives/achievements
- Understand more in-depth business needs, challenges, and opportunities
- Encourage local residents to patronage local businesses
- Education local businesses about EDD business support services.

Business Appreciation Week 2023 Recap

- Successfully executed 2nd year of program! Events included:
 - BOCC Proclamation
 - Ribbon Cutting Events
 - Circle of Services Webinar
 - BGAP Alumni Luncheon and BGAP Graduation
 - Business Engagement Visits
 - Business Networking Mixer
- **24 Charles County Business Visits**
- Business Appreciation Week Ambassadors:
 - SBDC
 - MD Commerce
 - College of Southern Maryland
 - Tri-County Council for Southern Maryland
 - EDD Advisory Board Members
 - Business Owners
- Business Appreciation Week Champions: County Leadership
- “With Love from Charles” Marketing Campaign







Disparity Study

- In September 2023, the BOCC approved updates to the County's MWBE and SLBE legislation addressing programs and procurement.
- The updated Legislation established the new Small, Local, and Minority Business Enterprise Programs Division within EDD. EDD is developing, budget, staffing, training needs as well as new SOPs associated with the updated legislation.



CHARLES COUNTY GOVERNMENT BUYS LOCAL



SIGN UP HERE

SMALL LOCAL BUSINESS ENTERPRISE PROGRAM (SLBE) PROGRAM

Charles County's SLBE Program allows all local, small businesses – regardless of race and gender – to gain exclusive access to certain county government procurements and preferential consideration for others via the SLBE Vendor List.

AND SUPPORTS MINORITY AND WOMEN-OWNED BUSINESSES



SIGN UP HERE

MINORITY & WOMEN BUSINESS ENTERPRISE (MWBE) PROGRAM

To ensure that minority and women-owned businesses are properly represented in the government procurement marketplace, Charles County Government relies on the MWBE Program and MWBE Vendor List.



Charles County Economic Development Department
301-885-1340 | info@MeetCharlesCounty.com
10665 Stanhaven Place, Suite 206
White Plains, MD 20695
Maryland Relay: 7-1-1 (TDD: 866-269-9006) | Equal Opportunity Employer

f @MeetCharlesCounty
in Charles County Economic
Development Department
tw @MeetCharlesCo



Accessing the Disparity Study Report

www.meetcharlescounty.com/charles-county-disparity-study/



Sister City: Walldorf, Germany

On May 31, a delegation from Walldorf, Germany, toured Charles County, reaffirming a sister city relationship with Waldorf, Maryland, established in 1997.

Sister city relationships, like the one between Walldorf and Waldorf, offer numerous benefits, including fostering business relations, cultural exchanges, and community development. These partnerships pave the way for enhanced collaboration and mutual growth, highlighting the significance of global connections in today's world.



Sister City: Waldorf, Germany

Stops During Visit:

- Charles County Government Building
- North Point High School
- Waldorf Volunteer Fire Department
- Historic Old Waldorf School





Charles County Asset Inventory

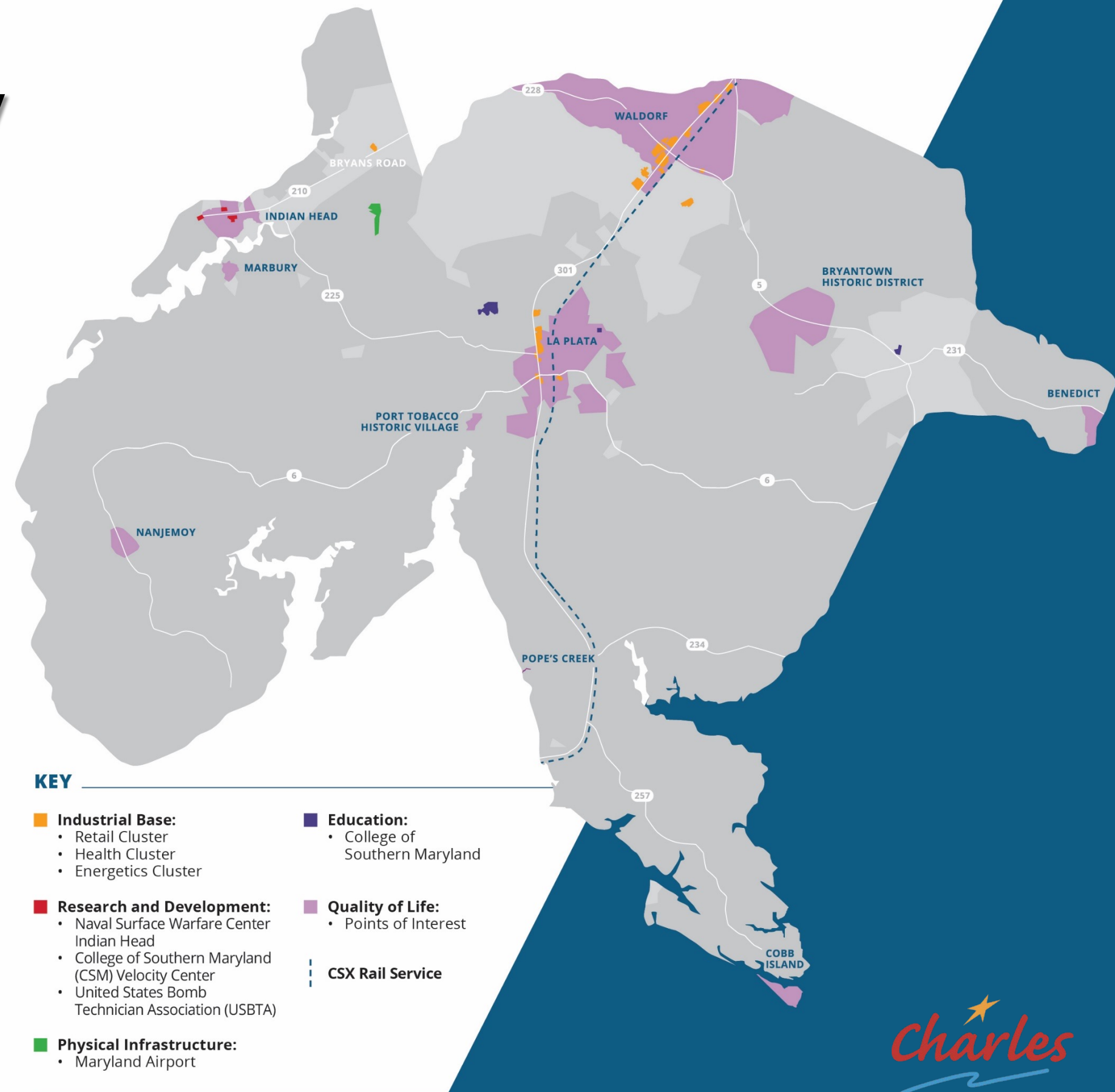
TAYLOR YEWELL
CHIEF OF COMMERCIAL DEVELOPMENT

Asset Inventory

This inventory identifies and categorizes the diverse array of assets within the county that can be harnessed to support workforce and economic development initiatives.

Includes informational sections on:

- *Industrial base*
- *Research and development*
- *Physical infrastructure*
- *Workforce*
- *Education*
- *Financial capital*
- *Business incentives*
- *Connective organizations*
- *Government*
- *Quality of life*



Target Industry: Health Care

MedStar Shah

- Have developed three (3) buildings totaling 120,000 square feet since 2020
- Development will support up to 350 jobs in the health care sector



Kaiser Permanente

- Planning and approvals are underway for the Phase One, 100,000-square-foot building to be delivered in 2025
- Phase One development should support 300 jobs in the health care sector



Target Industry: Energetics

NSWC IH

- Energetics Comprehensive Modernization Plan
- National Energetics Initiative and Smart Arsenal
- In March of 2023 announced a new public-private partnership (P3) agreement with X-Bow Launch Systems Inc.
- Manufacturing activities will be performed at NSWC IHD's existing industrial plant complexes

Maryland Technology Center

- Several for-profit industry partners have co-located to MTC along with USBTA
- In the future, MTC will house a sensitive compartmented information facility (SCIF)



Target Industry: Logistics

Amazon

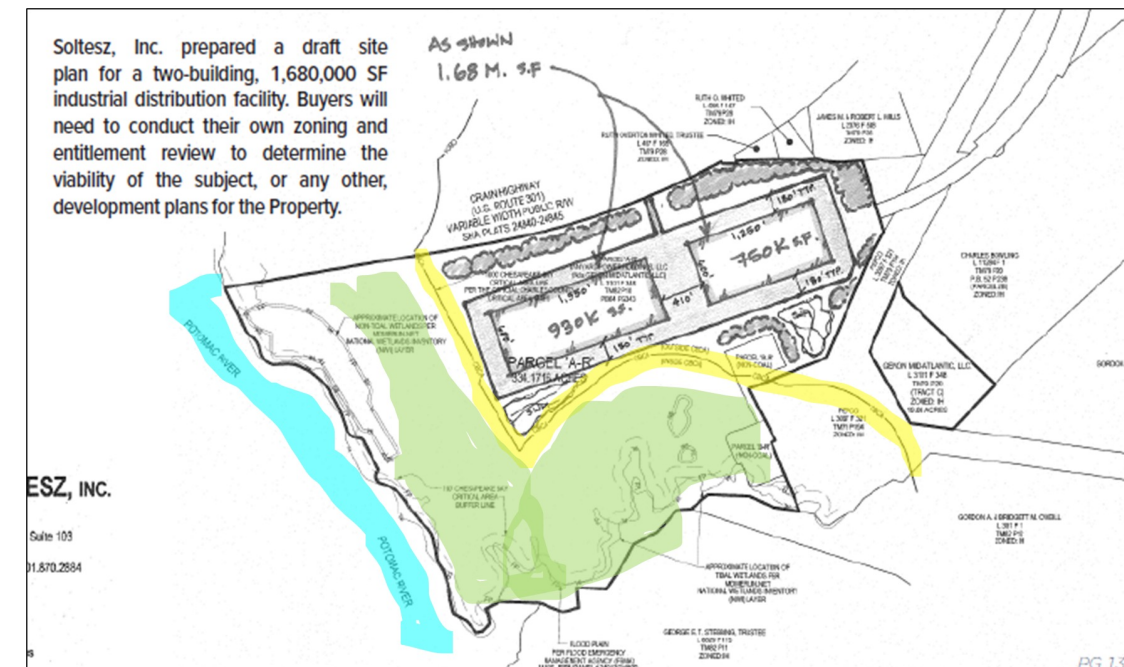
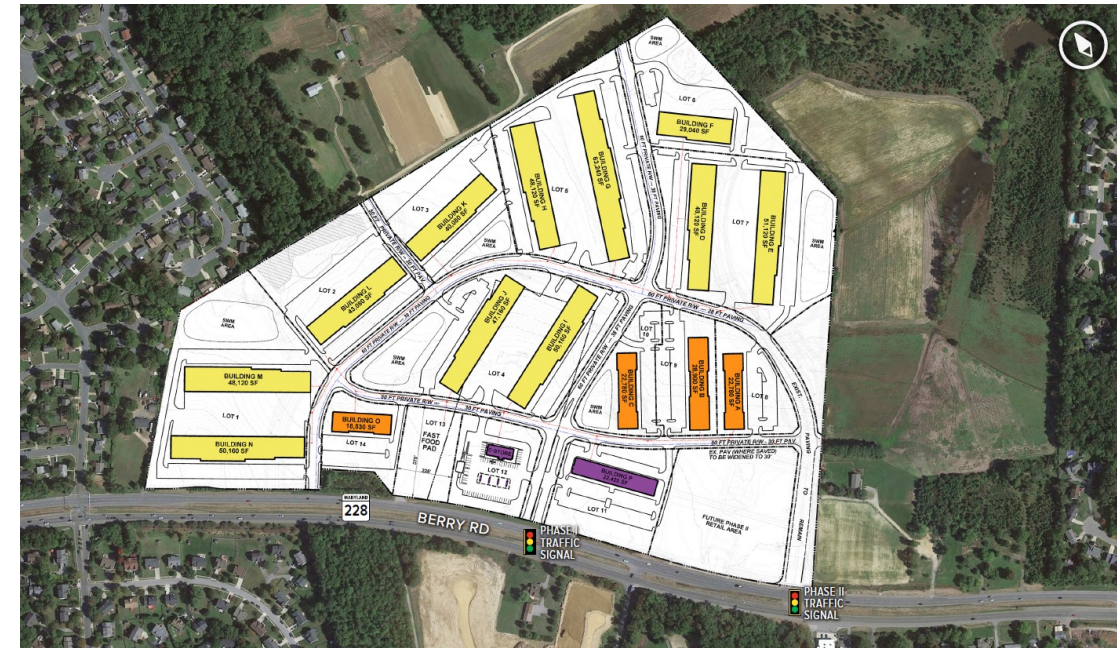
- Amazon began operations of its 190,000-square-foot “last mile delivery station” in 2022

Berry Pointe

- Site work is underway for St. John's Properties mixed use project on Berry Road
- The project is slated for 518,400 SF of flex/R&D space, 93,000 SF of single-story office, and 22,500 SF of retail

Morgantown

- The decommissioning of the Morgantown electrical generating power plant creates the potential for clean, green industrial development
- The presence of rail and water access by barge has attracted the interest of logistics investors




Support Local Businesses!

Encourage family and friends to support local businesses!



Be Our EDD Ambassadors

Follow us on Social Media!



Sign up here to receive our E-News and occasional emails.

Get interesting news and updates from the Charles County Economic Development Department delivered to your inbox.

* Email Address

* First Name

* Last Name

Company

Sign up for our regular e-news at
www.MeetCharlesCounty.com

PRESENTED BY:

Economic Development Charles County Government

10665 Stanhaven Place, Ste. 206 | White Plains, MD 20695
301-885-1340 | info@MeetCharlesCounty.com



Equal Opportunity Employer

It is the policy of Charles County to provide equal employment opportunity to all persons regardless of race, color, sex, age, national origin, religious or political affiliation or opinion, disability, marital status, sexual orientation, genetic information, gender identity or expression, or any other status protected by law.

www.MeetCharlesCounty.com
www.CharlesCountyMD.gov



2023

FALL MEETING



Charles COUNTY
ADVANCING WORKFORCE
TOGETHER



**Charles County Government
Economic Development Department**

10665 Stanhaven Place, Suite 206 | White Plains, MD 20695
301-885-1340 | info@MeetCharlesCounty.com
www.MeetCharlesCounty.com

