



Charles COUNTY

QUARTERLY BUSINESS ROUNDTABLE

July 17, 2025



ECONOMIC DEVELOPMENT DEPARTMENT

WELCOME

MICHELLE D. FRYE,
Acting Director



ECONOMIC DEVELOPMENT DEPARTMENT



Michelle Frye

Acting Director of Economic Development



Mark Thompson

Chief of Commercial
Development



**Lucretia
Freeman-Buster**

Chief of Business Services



Paul Ruppert

Senior Commercial
Development Manager



Anthony Twyman

MWBD/DBE Compliance
Manager



Jack Street

Research and Special
Projects Manager



Anthony Adesina

Business Retention and
Expansion Manager



**Chastity
Durham-Miller**

Small and Minority Business
Development Specialist



Jennifer Reginald

Marketing Coordinator



Chudi Obi

Business Development
Coordinator



Lacey Herbert

Economic Development
Administrative Coordinator

Cheryl Anderson

Part Time - Business
Development Assistant

Dr. Margaret Dureke

Consultant - BGAP Program Manager



COMMISSIONER WELCOME

REUBEN B. COLLINS, II, ESQ

CHARLES COUNTY'S CIRCLE *of* SERVICES

EDUCATE • NAVIGATE • COORDINATE



STRATEGIC PARTNER



Rebecca Brandt

Director of Career and Technical Education (CTE)
Charles County Public Schools

Career and Technical Education (CTE)

Charles County Public
Schools



Charles County Public Schools

Overview of CCPS



Overall enrollment 28,212

Charles County Public Schools is composed of 38 schools and 6 educational centers.

- 22 Elementary Schools
- 9 Middle Schools
- 7 High Schools
- 6 Centers:
 - Early Learning Center, La Plata
 - F.B. Gwynn Educational Center
 - James E. Richmond Science Center
 - Judy Center
 - Nanjemoy Creek Environmental Center
 - Robert D. Stethem Educational Center



What is Career and Technical Education?

Arts, Media, and Communication	Business Management and Finance	Information Technology
<ul style="list-style-type: none"> •Graphic Communications •Interactive Media Production •Theatre •Dance 	<ul style="list-style-type: none"> •Business Management 	<ul style="list-style-type: none"> •IT Networking Academy •Cyber Security •Computer Science
Consumer Services, Hospitality, and Tourism	Health and Biosciences	Human Resources Services
<ul style="list-style-type: none"> •Barbering •Culinary Arts (ACF) •Food and Beverage Management (ProStart) •Cosmetology 	<ul style="list-style-type: none"> •Academy of Health Professions •Certified Clinical Medical Assistant •Pharmacy Technician •Physical Rehabilitation •PLTW Biomedical Sciences •Biotechnology 	<ul style="list-style-type: none"> •Maryland Fire and Rescue Institute (MFRI) •Criminal Justice •Child Development Professions •Teacher Academy of Maryland (TAM) •JROTC
Construction and Development	Manufacturing, Engineering, and Technology	Transportation Technologies
<ul style="list-style-type: none"> •Construction Design and Management •Heating, Ventilating, and Air Conditioning (HVAC) •Electrical Technology •Welding Technology 	<ul style="list-style-type: none"> •Drafting and Design •PLTW Pathway to Engineering •Engineering Early College Pathway 	<ul style="list-style-type: none"> •Automotive Technician (NATEF) •Collision Repair
Career Research and Development	Environmental, Agricultural, and Natural Resources	Apprenticeship Maryland
<ul style="list-style-type: none"> •Career Research and Development (CRD) 	<ul style="list-style-type: none"> •CASE: Natural Resources 	<ul style="list-style-type: none"> •Apprenticeship Maryland (AMP)



Provide opportunities for students to be exposed to a multitude of diverse career paths



Provide individualized career counseling sessions



Establish a network of stakeholders who can coach and mentor students



Provide resources for students and parents from 5th grade to 12th grade to create their career plan



Guarantee graduating students have completed everything necessary for their plan

Career Counseling



Students Choose A Pathway

Career and Technical Education (CTE)

Early College/ Dual Enrollment

AP Pathway



CTE Program Model



Course 1: Required Content with aligned IRC



Course 2: Required Content with aligned IRC



(Optional) Course 3: Flex Work-Based Learning, Dual Enrollment, Apprenticeship, Continued Coursework



(Optional) Course 4: Flex Work-Based Learning, Dual Enrollment, Apprenticeship, Continued Coursework

*IRC- Industry Recognized Credential

Program Outcomes

```
graph LR; A[Program Outcomes] --- B[Industry Recognized Credential]; A --- C[College Credits]; A --- D[Work-Based Learning/ Internships/ Apprenticeships];
```

Industry Recognized
Credential

College Credits

Work-Based Learning/
Internships/
Apprenticeships

2024 Enrollment and Certification Data

Countywide Enrollment	
Total Enrollment (# of all HS students)	9353
Total Enrollment (# of all graduating students)	2181
CTE ¹	
CTE Concentration Rate (% of all graduating students)	37%
CTE Completers Rate (% of all graduating students)	34%
IRC Completion Rate (% of all CTE Completers)	42%

Year	Attempted Certification	Attained Certification
2022-2023	650	416*
2023-2024	830	507*

*each certification is counted; some students have multiple certifications

Industry Recognized Credentials by Program

Program	Number of Certifications Attained
Automotive- ASE Certifications	107
Business- ASK Certification	27
Certified Nursing Assistant- CNA, First Aid, CPR	14
Construction Design Management- AutoCAD and Revit	12
Cosmetology- Board Certified	4
Culinary Arts-ACF Certification	20
Cyber Security- Security+	20
Drafting and Design- AutoCAD and Revit	25

Program	Number of Certifications Attained
Graphic Communications- PrintED	37
Interactive Media Production- Adobe	72
Pharmacy Technician- ExCPT	12
Physical Rehabilitation- Personal Trainer, NSPA	8
Teacher Academy of Maryland- ParaPro	40
Welding- AWS and NCCER	16



Career and Technical Education Resources

<http://www.ccboe.com/cte>

Community Partner Engagement Menu

This menu provides a variety of ways our community can provide valuable experiences to support student's planning and preparation for potential career paths based on our partner's priorities, time and commitment, and resources.

Career Awareness

Themed Project

(12+ hours)



Help teachers design a multidisciplinary learning activity; coach students and/or provide feedback on their work.

Classroom Speaker

(30—90 minutes)



Visit a school and talk with a class about what it means to work in your industry.

Career Exploration

Workplace Tour

(1.5—2 hours/visit)



Host a small group of students to tour your workplace and discuss career options, required education, a typical day, and more.

Job Shadow

(4-8 hours)



Provide an opportunity for students to observe, discuss and participate in daily routines and activities of a particular job.

Informational Interview

(30-90 minutes)



Answer student questions in person, by phone, or virtually about a profession or specific topic.

Career Fair

(2-4 hours)



Staff a booth to share advice on pursuing a career, skills and knowledge needed, and career roles and responsibilities.

Career Preparation

Resume Development/Mock Interview

(1-2 hours)



Provide feedback to students on the resumes and/or responses to interview questions.

Internship

(60+ hours)



Provide unpaid or paid work experiences that provides employability skill training and applies classroom learning and builds skills.

Mentor/Coach

(10-15 hours per semester)



Provide guidance and feedback to student on a specific project.

Youth Apprenticeship

(450+ hours)



Provide paid on-the-job training based on state youth apprenticeship guidelines.

Extra Credit

Teacher Externship

(15-60 hours)



Provide job shadowing, training, or similar experience that will help teachers bring workplace norms, tools and skills into the classroom.

Program Advisory Member

(2 hours/2-3 times per year)



Provide expert insights and guidance to ensure the curriculum, skills taught, and equipment used are aligned with current industry standards and needs.

Industry Project

(8-15 hours)



Collaborate with teachers to integrate authentic industry tasks into curriculum.

Community Partner Recruiter



Spread the word to other businesses and organizations the partnership opportunities needed!



For information about our CTE Programs, visit

www.ccboe.com/cte

Partner with us by returning this form to

Sandy Rooney, srooney@ccboe.com



Scan to
complete the form
electronically

Name _____ Company _____

Phone _____ Email _____

☐ I would like to work with middle school students.

☐ I would like to work with high school students.

Link to the
Engagement
Menu:

<https://tinyurl.com/mtpwxbtx>.



INSIDE SCOOP

MARK THOMPSON,
CHIEF OF COMMERCIAL DEVELOPMENT

Charles County's Growth Remains Strong — And We're Outpacing Expectations!

- As of July 2024, Charles County is Maryland's **10th** largest county, with a population of **174,478**, according to the U.S. Census Bureau.
- Since 2020, Charles County has experienced the **second fastest population growth** in Maryland.

Population Change, 2020-2024					
Winners			Losers		
County	2024 Population	% Change '20-'24	County	2024 Population	% Change '20-'24
Frederick County	299,317	10.2%	Baltimore City	568,271	-3.0%
Charles County	174,478	4.7%	Baltimore County	852,425	-0.2%
Wicomico County	106,329	2.6%	Prince George's County	966,269	-0.1%
Cecil County	106,305	2.5%	Washington County	157,228	1.6%
Carroll County	177,108	2.4%	Anne Arundel County	602,350	1.6%
Source: U.S. Census Bureau, Population Division, March 2025					

Migration Patterns Matter – People Vote with Their Feet!

- Charles County's population growth is largely driven by positive net migration.
- Since 2020, most new residents have come from other parts of the U.S., with a notable boost from international migration as well.

Migration Patterns, 2020 to 2024							
Winners				Losers			
County	International Migration	Domestic Migration	Total Migration	County	International Migration	Domestic Migration	Total Migration
Frederick County	5,301	18,713	24,014	Baltimore City	10,160	-27,596	-17,436
Charles County	1,717	4,970	6,687	Prince George's County	43,510	-57,803	-14,293
Carroll County	1,072	3,546	4,618	Baltimore County	17,915	-20,935	-3,020
Harford County	920	3,434	4,354	Montgomery County	51,856	-51,368	488
Washington County	1,065	2,909	3,974	St. Mary's	747	262	1,009
Source: U.S. Census Bureau, Population Division, March 2025							

Housing Growth Mirrors Our Momentum

- In 2024, Charles County issued over **1,500** new residential building permits, reflecting a **110%** increase since 2020.
- This surge highlights strong market demand and continued confidence in Charles County's growth trajectory.

Residential Building Permits Issued in 2024		
County	Building Permits	% Change '20-'24
Montgomery County	3,656	146.0%
Frederick County	1,562	-39.4%
Charles County	1,542	109.8%
Baltimore County	1,511	4.4%
Prince George's County	1,473	-45.9%
Source: Office of Policy Development and Research (PD&R) HUD		

St. Charles: A Leader Among Master-Planned Communities

- St. Charles is Maryland's top-selling master-planned community and ranks among the top 50 nationwide.
- In 2024, 449 homes were sold, and over 300 homes have already sold this year (to date).
- The community still has approximately 4,000 homes left to build, plus 100 acres available for future commercial development.
- St. Charles offers a wide range of amenities and includes dedicated school sites as part of its long-term development plan.

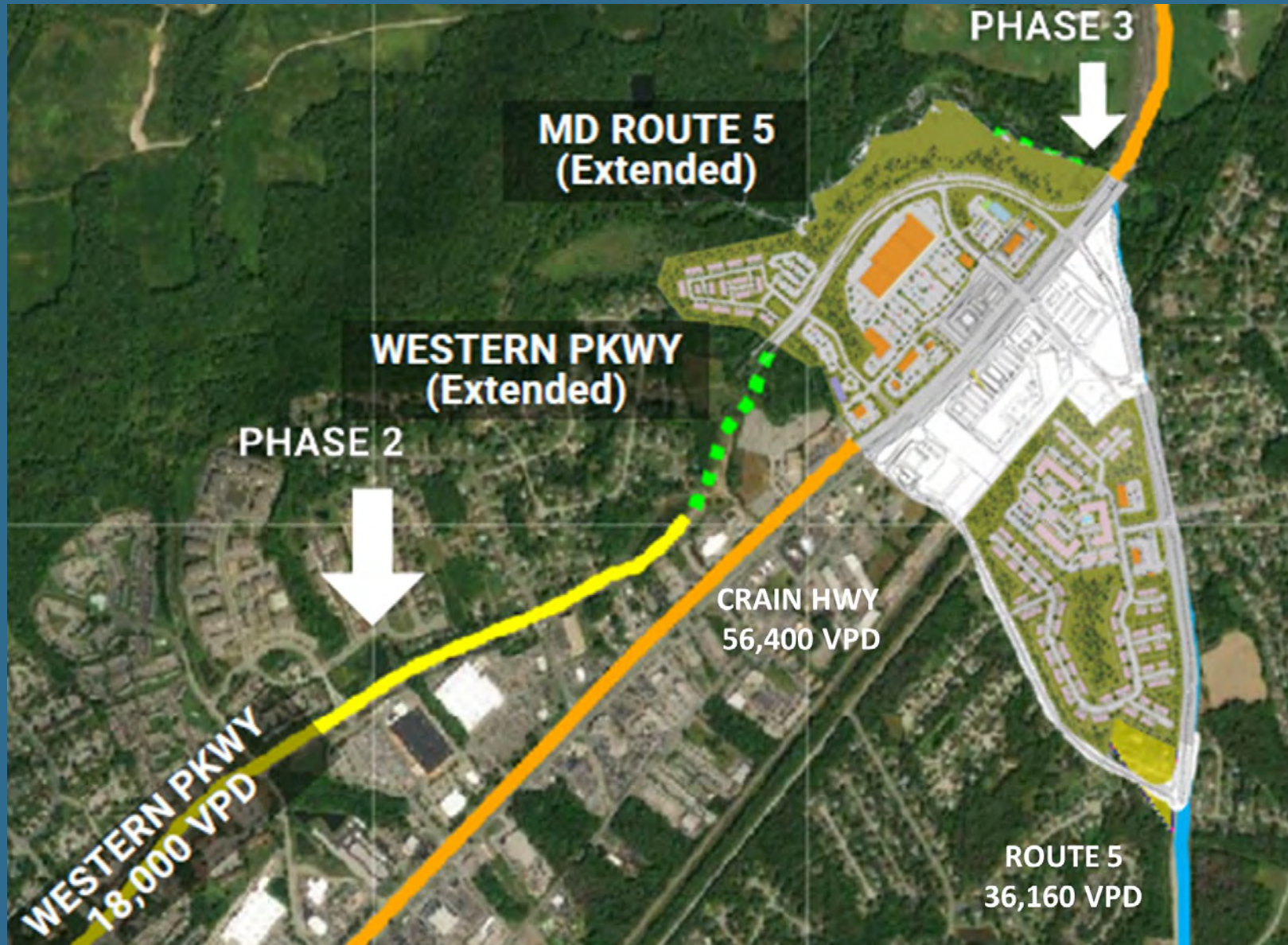


Pine Grove



- Pine Grove is a master planned, mixed-use community in La Plata that is being developed by D.R. Horton, the largest homebuilder in the US.
- There are a total of 3,170 homesites on over 1,000 acres. There are 90 acres of land planned for commercial development.
- Future commercial development will include a supermarket, office and flex office space and self-storage units.

Waldorf Station: Retail Rising with Residential Demand



- Construction is underway on Phase 1 of the retail center at Waldorf Station.
- Confirmed tenants include:
 - Starbucks
 - Pollo Campero
 - Honeygrow
- Ironwoods, a 302-unit apartment community, is now leasing and will officially open this Fall.

Sprouts Farmers Market Opens in Charles County!



- Sprouts is one of the largest and fastest-growing specialty grocery chains in the U.S., known for offering fresh, healthy, and lifestyle-focused products.
- The Waldorf location will officially open on **August 1st** at the Shops at Waldorf Center on Crain Highway.
- This will be Sprouts' 7th location in Maryland—and the first in Southern Maryland, marking a major retail milestone for Charles County.

Charles County Sports and Wellness Complex



- Redevelopment of the former Sears Building into a Sports and Wellness Complex featuring a competitive swimming complex.
- Community input sessions are now complete.
- Groundbreaking is targeted for 2026 and completion of Phase 1 in 2028.



BE *in the* KNOW

ANTHONY ADESINA,
BUSINESS RETENTION AND EXPANSION MANAGER

Maryland Business Support Programs

Child Care Capital Support Revolving Loan Fund

- **Financing resource** operated by the **Department of Commerce**, with support from the State Department of Education.
- Provides **no-interest loans for capital expenses** to childcare providers who participate in the State Department of Education's Childcare Scholarship Program.
- Loans may only be used for capital expenses related to a childcare facility including **Acquisition, Expansion, Renovation, and New Construction**.
- **Priority** given to providers located in **underserved** communities or areas designated as **lacking available** childcare slots, located in **rural communities**, serving children with **special needs**, serving children **ages 2 and younger**.

Microenterprise Loan Program

- Provides **flexible financing** for **microenterprise start-ups/expansions** in **Sustainable Communities** and **Priority Funding Areas**
- Administered by **Maryland DHCD** and **community-based microlenders**.
- Eligible for businesses with **<5 employees** and **< \$500K in revenue**.
- Funds can be used for **working capital, marketing, real estate, renovations, and equipment**.
- Loan program portion **cannot exceed** \$50,000 with loan term **not exceeding** 5 years.
- Eligible businesses – Retail, Manufacturing, Goods and Services.

Maryland Business Support Programs

Military Personnel and Veteran-Owned Small Business Loan Program (MPVOLP)

- Provides **no interest** loans of up to \$100,000.
- Businesses must be owned by **military reservists, veterans, National Guard personnel**.
- Small businesses with less than 50 employees that **employ or are owned** by such persons are also eligible to apply.
- Repayment term from **one to eight** years.

Project Opportunity

- **Free** entrepreneur training for spouses of **veterans, active duty, and guard/reserve personnel, and military dependents** over the age of 21.
- Series of workshops planned to **provide** veterans with **assistance** in starting their own businesses.
- **Business Boot Camp** training spans ten weeks; thirty (30) hours of classroom instruction, 3 hours per week.
- Mandatory Orientation - Monday, August 25, 2025 - [Registration ★ Project Opportunity](#)

Upcoming Events

Connect to Capital – SBA Resource Day

- Friday, July 25, 2025
- CSM La Plata Campus – Business & Industry (“BI”) Building, Room 113
- 8:30 AM – 12:30 PM
- Register to attend: [Connect to Capital Speed Lending - SBA Resource Day](#)

EDD Fall Meeting

- Tuesday, November 4, 2025
- Waldorf West Library (10405 O'Donnell Pl, Waldorf, MD 20603)
- 8:30 a.m. to 1:00 p.m.

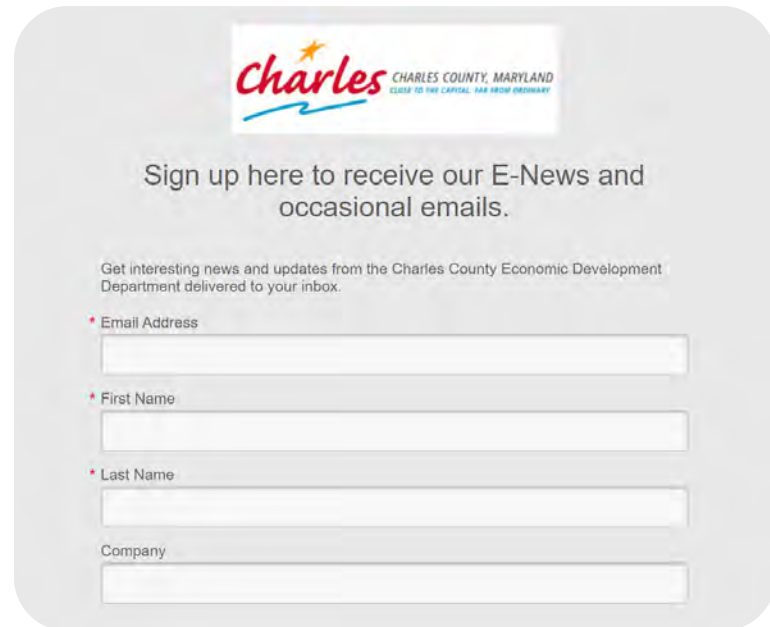
Support Local Businesses!


JOIN CHARLES COUNTY'S DIGITAL GIFT CARD PROGRAM

Feel the Love, County-wide



Be Our EDD Ambassadors

A sign-up form for Charles County E-News. It features the Charles County logo at the top, followed by the text "Sign up here to receive our E-News and occasional emails." Below this is a description: "Get interesting news and updates from the Charles County Economic Development Department delivered to your inbox." The form includes four input fields: "Email Address", "First Name", "Last Name", and "Company". Each field is preceded by an asterisk indicating it is a required field.

 **CHARLES COUNTY, MARYLAND**
CLOSE TO THE CAPITAL, FAR FROM ORDINARY

Sign up here to receive our E-News and occasional emails.

Get interesting news and updates from the Charles County Economic Development Department delivered to your inbox.

* Email Address

* First Name

* Last Name

Company

Follow us on Social Media



Sign up for our regular e-news at
www.MeetCharlesCounty.com



Q&A

GOT QUESTIONS?

Enter them in “Q&A” or “Chat”

Let Us Hear From You

**Please take our survey about today's
Quarterly Business Roundtable.**





PRESENTED BY

Charles County Economic Development Department

301-885-1340 | info@MeetCharlesCounty.com

10665 Stanhaven Place, Ste. 206 | White Plains, MD 20695

Equal Opportunity Employer

It is the policy of Charles County to provide equal employment opportunity to all persons regardless of race, color, sex, age, national origin, religious or political affiliation or opinion, disability, marital status, sexual orientation, genetic information, gender identity or expression, or any other status protected by law.