



# Western Charles County Economic Development Update



May 23, 2025



# ECONOMIC DEVELOPMENT DEPARTMENT



**Kelly Robertson-Slagle**  
Director



**Michelle Frye**  
Deputy Director



**Taylor Yewel**  
Chief of Commercial  
Development



**Sydney Garner**  
Agriculture and Rural  
Development Manager

**Dr. Margaret Dureke**  
Consultant - Business Retention  
and Expansion

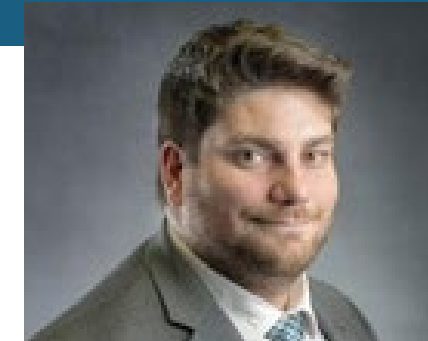


**Lucretia  
Freeman-Buster**  
Chief of Business Services



**Jennifer Reginald**  
Marketing Coordinator

**Cheryl Anderson**  
Part Time - Business  
Development Assistant



**Jack Street**  
Research and Special  
Projects Manager



**Chudi Obi**  
Business Development  
Coordinator

MWBE/DBE Compliance Manager



**Anthony Adesina**  
Business Retention and  
Expansion Manager



**Lacey Herbert**  
Economic Development  
Administrative Coordinator

Small and Minority  
Business Development Specialist

301-885-1340 | [info@MeetCharlesCounty.com](mailto:info@MeetCharlesCounty.com) | [www.MeetCharlesCounty.com](http://www.MeetCharlesCounty.com)  
10665 Stanhaven Place, Suite 206 | White Plains, MD 20695



## **Economic Development Definition**

Accelerating business development, attraction, retention, and expansion in key/targeted industry sectors.



# COMMISSIONERS GOALS & OBJECTIVES



**GOAL 1** — Research and catalog an economic development asset inventory to promote county assets and resources that support effective business attraction efforts

**GOAL 2** — Leverage opportunities created by federal DOD funding of energetics research, development and manufacturing

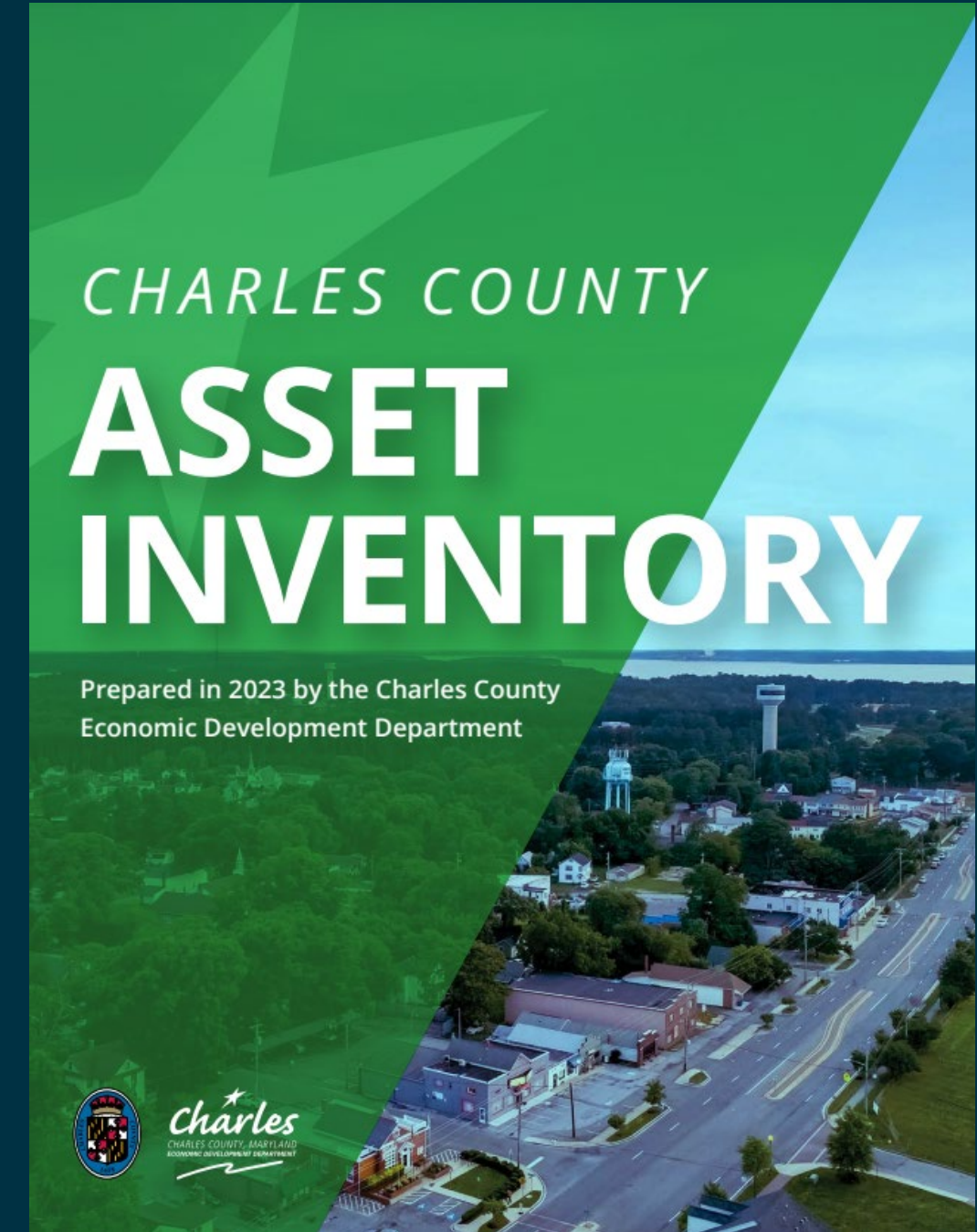
**GOAL 3** — Collaborate across departments to improve the speed, consistency, and predictability of the Development Review Process

**GOAL 4** — Complete a comprehensive economic development plan to spur investment and development while supporting the retention and attraction of businesses, entrepreneurs, and talent

UPDATE  
**GOAL 1**

Research and catalog an economic development asset inventory to promote county assets and resources that support effective business attraction efforts

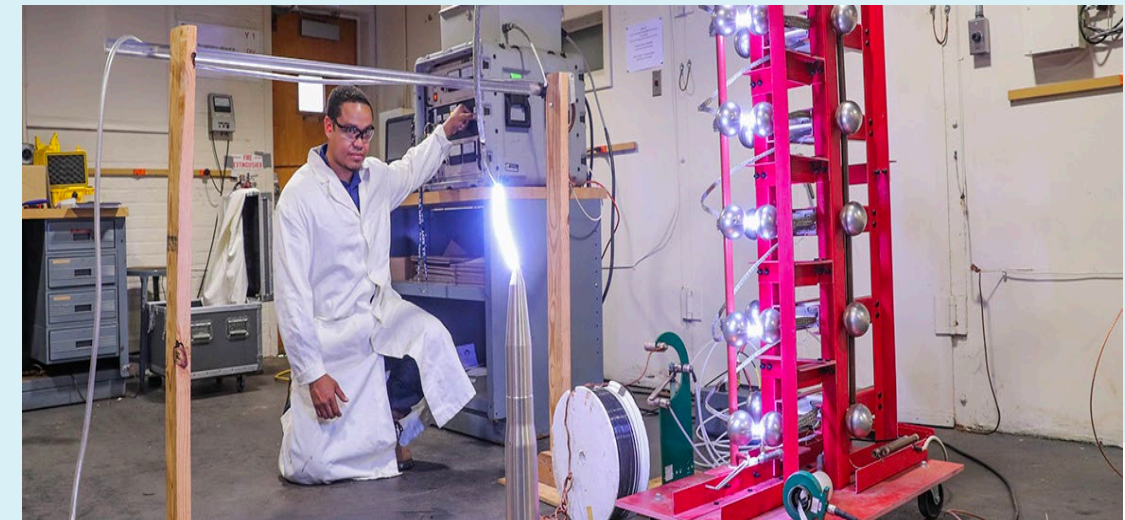
- The Economic Development Department (EDD) debuted the first edition of the Asset Inventory in November 2023 at the Annual Fall Meeting.
- The Asset Inventory is available electronically on the EDD website, [www.MeetCharlesCounty.com](http://www.MeetCharlesCounty.com), under "Data & Resources."
- Currently, we are assessing strengths/weaknesses, identifying gaps, as well as possible opportunities between assets.





# Growth coming to NSWC Indian Head Division *Charles*

- Navy's Energetics Comprehensive Modernization Plan (ECMP)
  - ✓ \$2.7 billion, 15-year modernization plan to bolster the Navy's Energetics Defense Industrial Base.
  - ✓ 500 infrastructure projects planned before 2032
- Department of the Navy Office of Small Business Programs reports an 11+% increase in small business participation and an additional \$35 million obligated to small businesses at NSWC IHD over the previous fiscal year.
- Naval Surface Warfare Center Indian Head Division (NSWC IHD) announced the signing of a Public-Private Partnership (P3) Agreement with Aerojet Rocketdyne and X-Bow Systems under the command's Center for Industrial and Technical Excellence (CITE) designation.
- Naval Surface Warfare Center Indian Head Division (NSWC IHD), the [National Armaments Consortium \(NAC\)](#), and [ACMI Federal](#) announced a new Cooperative Research and Development Agreement (CRADA) to develop prototype techniques and technologies to domestically process and manufacture critical chemicals and components in support of the U.S. Navy and the Department of Defense (DoD).
- Advanced Research Associates, Inc. establishing new office in Western Tech Corridor in late 2024.



UPDATE  
**GOAL 2**

Leverage opportunities created by federal DOD funding of energetics research, development and manufacturing

- EDD continues to support the creation of a new Aviation Business Park zone to directly support expected growth from NSWC IHD National Energetics and Smart Arsenal initiatives.
- EDD coordinated with the Resilience Authority of Charles County and the Town of Indian Head to apply for Clean Water Commerce Act funding to complete shoreline restoration of the Henderson Property.
- EDD coordinated with the Charles County Military Alliance Council, The Patuxent Partnership, NSWC IHD, College of Southern Maryland, and CCPS to apply for a \$575K Federal Workforce Development grant to expand the Southern Maryland 2030 Workforce Development program into Charles County.

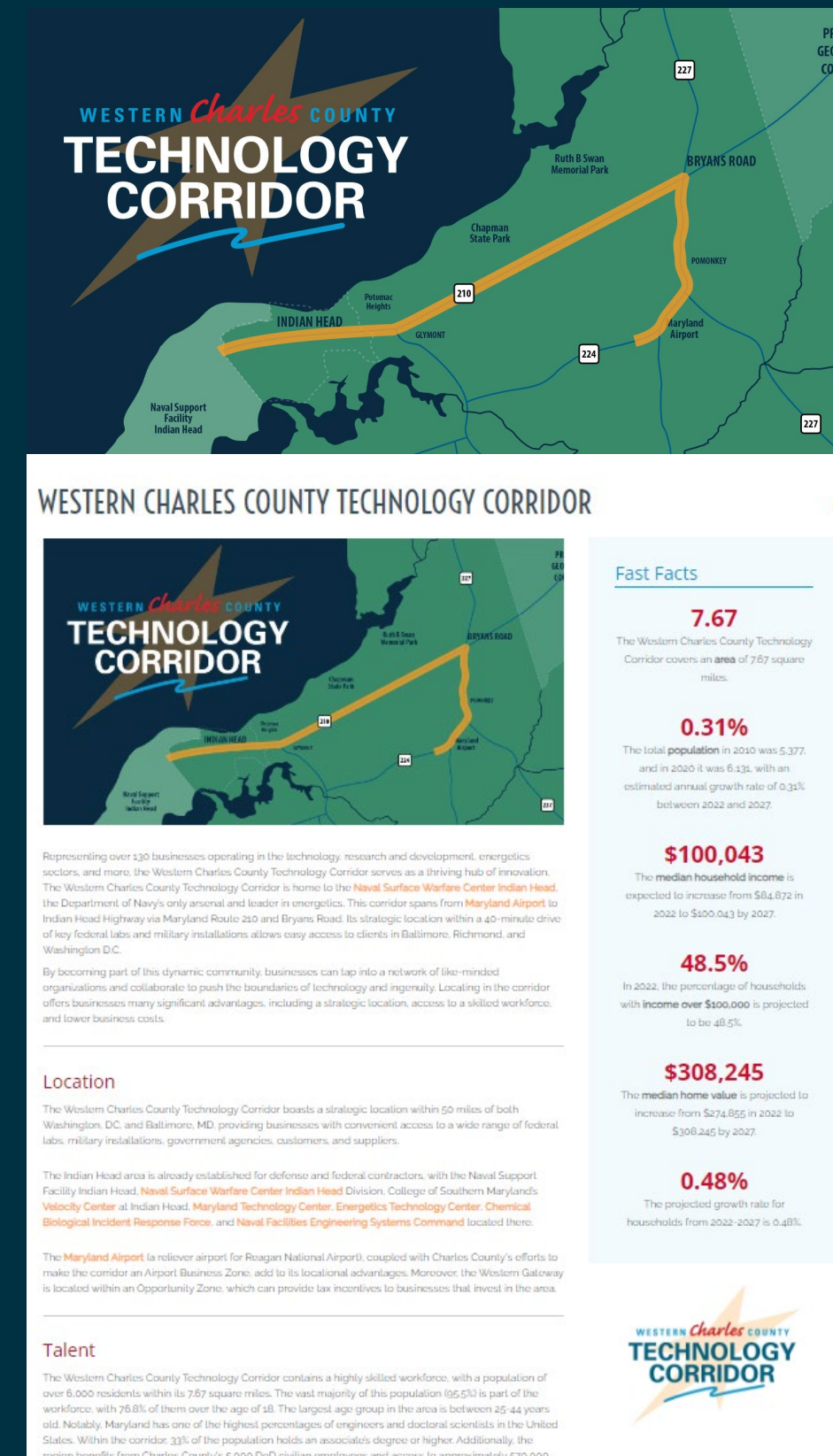




UPDATE  
**GOAL 2 cont.**

Leverage opportunities created by federal DOD funding of energetics research, development and manufacturing

- EDD has developed a Western Charles County Technology Corridor marketing campaign that includes logo and marketing materials, development of road signage, welcome letters to be sent to the 130 businesses currently located within the corridor, as well as a dedicated web page.
- EDD continues to highlight Energetics and Defense Industries with targeted advertising, blogs, and coordinated articles in publications such as Inside Defense and Sea Power Magazine.





# Helping Businesses Thrive

## CHARLES COUNTY'S CIRCLE *of* SERVICES

EDUCATE • NAVIGATE • COORDINATE



Charles County's Economic Development's Circle of Services offers total support to businesses of every size and stage of growth.

Our support system of local, regional, and state partners is purposeful, integrated, and accelerates future growth. From workforce and education partners to capital resources, innovation support to targeted assistance for small, minority, women-owned, and disadvantaged business enterprises, our Circle of Services helps local businesses prosper.

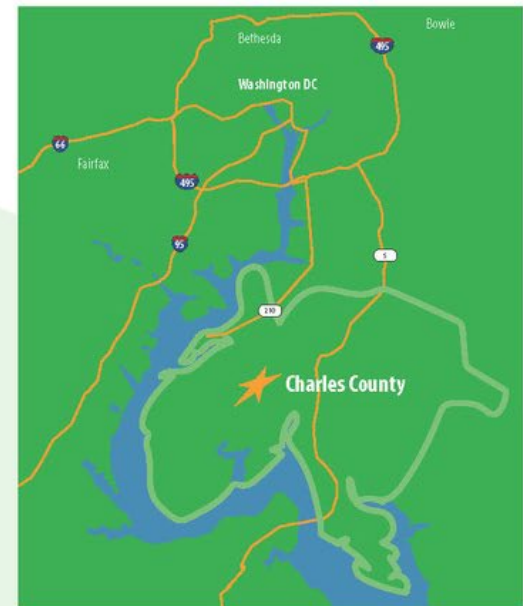
# Business Recruitment

- Ongoing advertising campaign to include new and existing targeted industries
- National advertising aimed at Site Selectors to promote commercial real estate opportunities

## CHARLES COUNTY: DATA-DRIVEN DECISIONS

Located 30 minutes south of Washington, D.C., Charles County's proximity to customers, talent, and collaborators provide businesses with competitive advantages.

Our ZoomProspector tool presents businesses with up-to-date GIS data, driving informed decision-making. From available sites to suppliers, demographics to labor, our approach to site selection addresses key business considerations.



Learn more at [www.MeetCharlesCounty.com](http://www.MeetCharlesCounty.com),  
or contact Taylor Yewell,  
Chief of Development,  
at 301-885-1340 x2200 or  
[YewellT@MeetCharlesCounty.com](mailto:YewellT@MeetCharlesCounty.com).







PRESENTED BY: Kelly Robertson-Slagle, Director

# Economic Development Charles County Government

10665 Stanhaven Place, Ste. 206 | White Plains, MD 20695  
301-885-1340 | [SlagleKR@MeetCharlesCounty.com](mailto:SlagleKR@MeetCharlesCounty.com)

## Equal Opportunity Employer

It is the policy of Charles County to provide equal employment opportunity to all persons regardless of race, color, sex, age, national origin, religious or political affiliation or opinion, disability, marital status, sexual orientation, genetic information, gender identity or expression, or any other status protected by law.

[www.MeetCharlesCounty.com](http://www.MeetCharlesCounty.com)  
[www.CharlesCountyMD.gov](http://www.CharlesCountyMD.gov)

