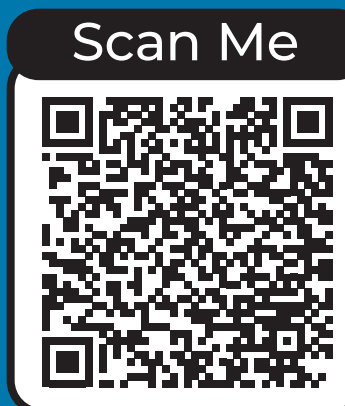


# Charles County CAP Community Engagement

The County conducted four (4) virtual, interactive webinars to collect feedback from the community on GHG reduction, resiliency, and communication strategies. In addition to the webinars, the County is holding six (6) in-person public meetings and hosting a survey to gather more feedback.

Help us engage with you more effectively by answering the following questions:

- What barriers prevent you from participating in climate action initiatives?
- What types of communication do you find most effective for understanding climate action plans?
- What motivates you to engage in climate action activities?
- What suggestions do you have for improving communication about climate action in our community?
- Are you a part of any community groups you would like to get involved in future Climate Action efforts? If so, how can we best connect?



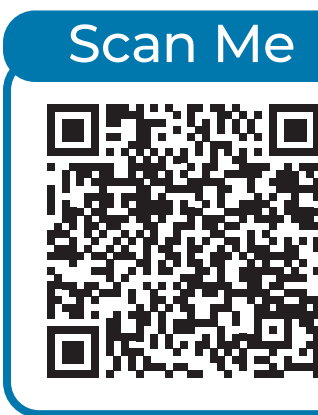
Visit our Climate Action Plan Engage Page  
<https://charles-county-md.civilspace.io/en/projects/charles-county-climate-action-planning>



## 4 Virtual Interactive Webinars

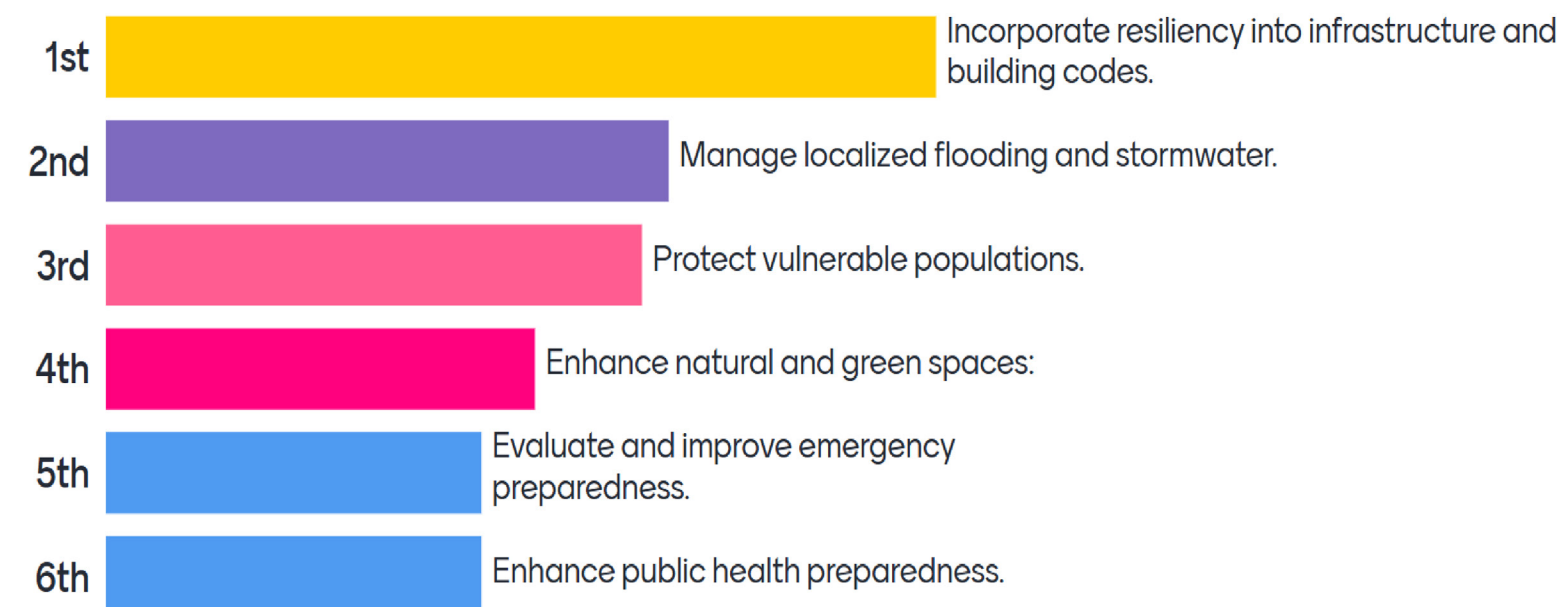
70 Attendees

139 Views  
on YouTube



For videos and materials from the virtual webinars, visit the County Climate Action Plan page.  
<https://www.charlescountymd.gov/government/climate-action-plan>

### Select the three (3) resiliency strategies you think are most important for making a resilient Charles County

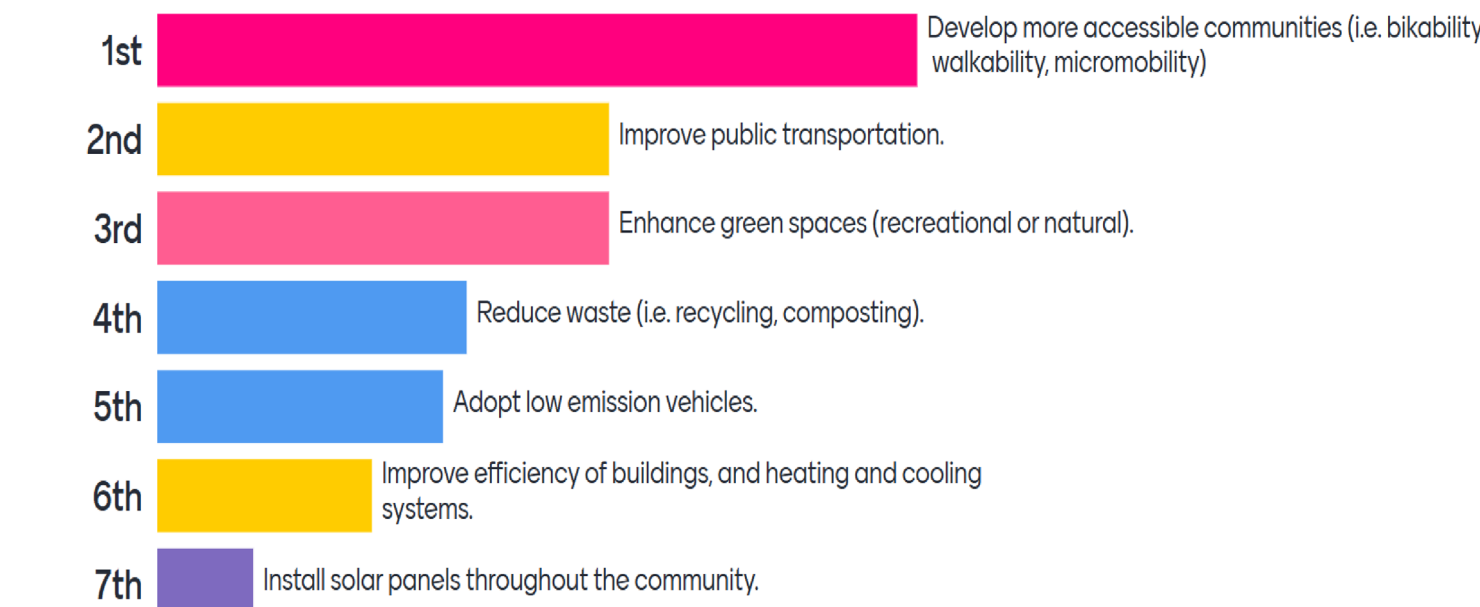


- All webinars actively encouraged attendee participation.
- The second webinar featured facilitated breakout room discussions to gather initial climate action strategies from the community.
- During the third webinar, attendees provided additional feedback on these strategies, including ranking them based on their importance.

### Do you agree with these results?

What are the most important GHG reduction and resiliency strategies to you?

### Select the three (3) Greenhouse Gas (GHG) strategies you think are most important for reducing GHG in Charles County



## Climate Action Plan Survey

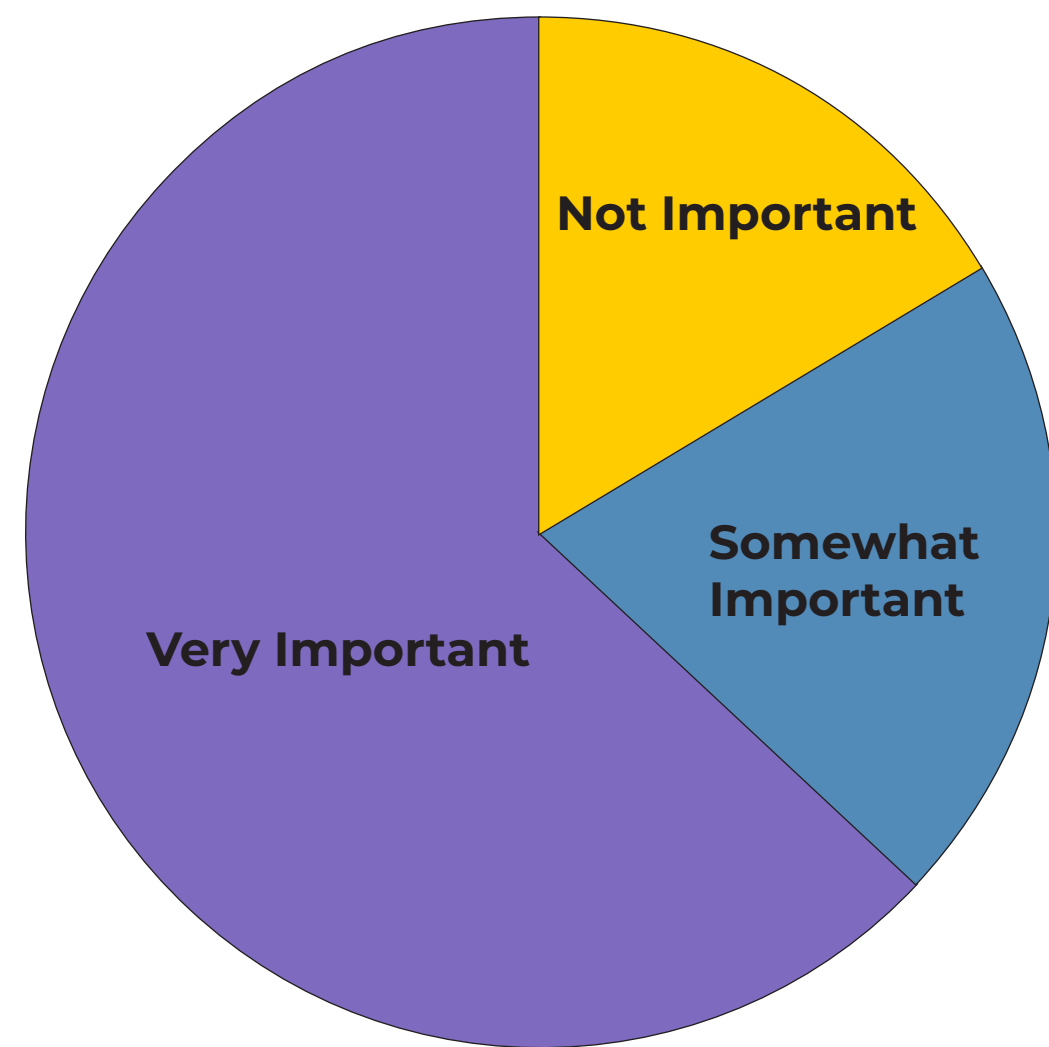
The Climate Action Plan survey aims to gather community input on basic interest in the Climate Action Plan. It only takes about 5 minutes to complete and provides an opportunity for residents to contribute to the county's environmental initiatives. Your feedback is valuable in shaping effective climate action efforts!

Responses to date: **82**  
Help us reach 200!

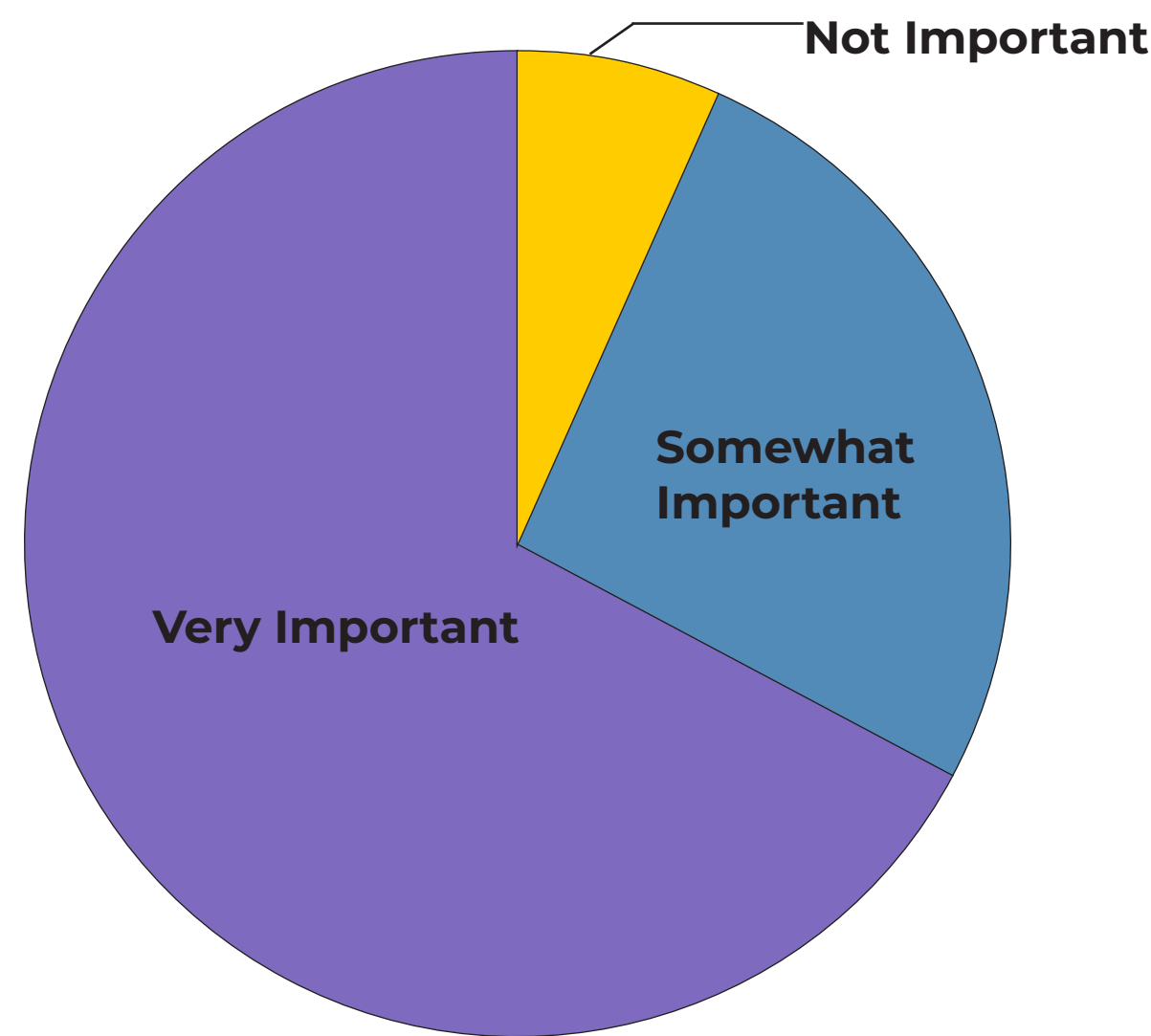


Share your thoughts on climate action planning. Take the quick 5 minute survey while you browse!  
<https://charles-county-md.civilspace.io/en/projects/charles-county-climate-action-planning>

I think reducing greenhouse gas emissions in our community is:



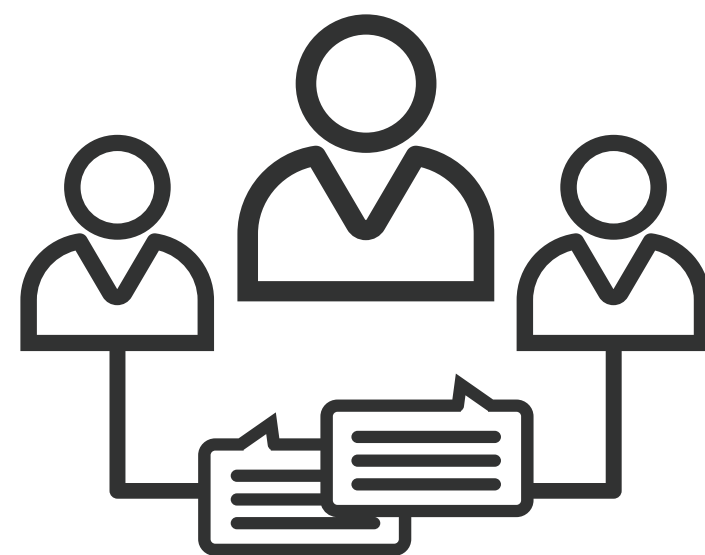
I think addressing our community's ability to recover from, or lessen our vulnerability to extreme weather events such as floods, storms, and extreme heat is:



## What's Next?

The County plans to host virtual stakeholder meetings to connect with key groups:

- Utility Companies
- Local Businesses / Private Sector
- Other Government Agencies [State, Federal]
- Community Organizations and Advocacy Groups
- Students / Youth



Sign-up for the Climate Action mailing list to get updates on the Climate Action Plan including the stakeholder meetings.  
<https://www.charlescountymd.gov/government/climate-action-plan>