

# Emergency

## Preparedness, Response & Safety

**JUNE 11, 2024**

**PRESENTERS:**

**MICHELLE LILLY, DIRECTOR**

**TONY ROSE, DEPUTY DIRECTOR**

**LORI CHERRY, CHIEF**

**JEFF CLEMENTS, CHIEF**

**JEFF THOMAS, CHIEF**



**GOALS &  
OBJECTIVES  
REPORTING**



## **Emergency Preparedness, Response & Safety Definition**

Answering the call to connect our community to critical life-impacting services alongside our volunteer fire/EMS, law enforcement, and other response partners.

# GOAL 1

## Emergency Preparedness, Response & Safety

Coordinate and collaborate with fire, emergency medical systems, law enforcement, and other response partners.

### Updates:

- Public Safety Leadership meetings
- Quarterly Town Halls
- Offering trainings for both career & volunteer
- Hosted an active shooter tabletop exercise for field providers in Fall 2023.

# GOAL 2

## Emergency Preparedness, Response & Safety

Equity focus to recruit, train, support, and retain emergency services personnel.

## Updates:

### Re-organization to implement:

- Career advancement opportunities
- Career diversity opportunities
- Bolster Training Section
- Add cadet component to academy (projected Fall 2024)

# GOAL 3

## Emergency Preparedness, Response & Safety

Provide high-quality service during emergent and non-emergent times of need.

### Updates:

- Construction of the Pinefield EMS Station on track
- Hot & Cold Dispatch/Response

# GOAL 3

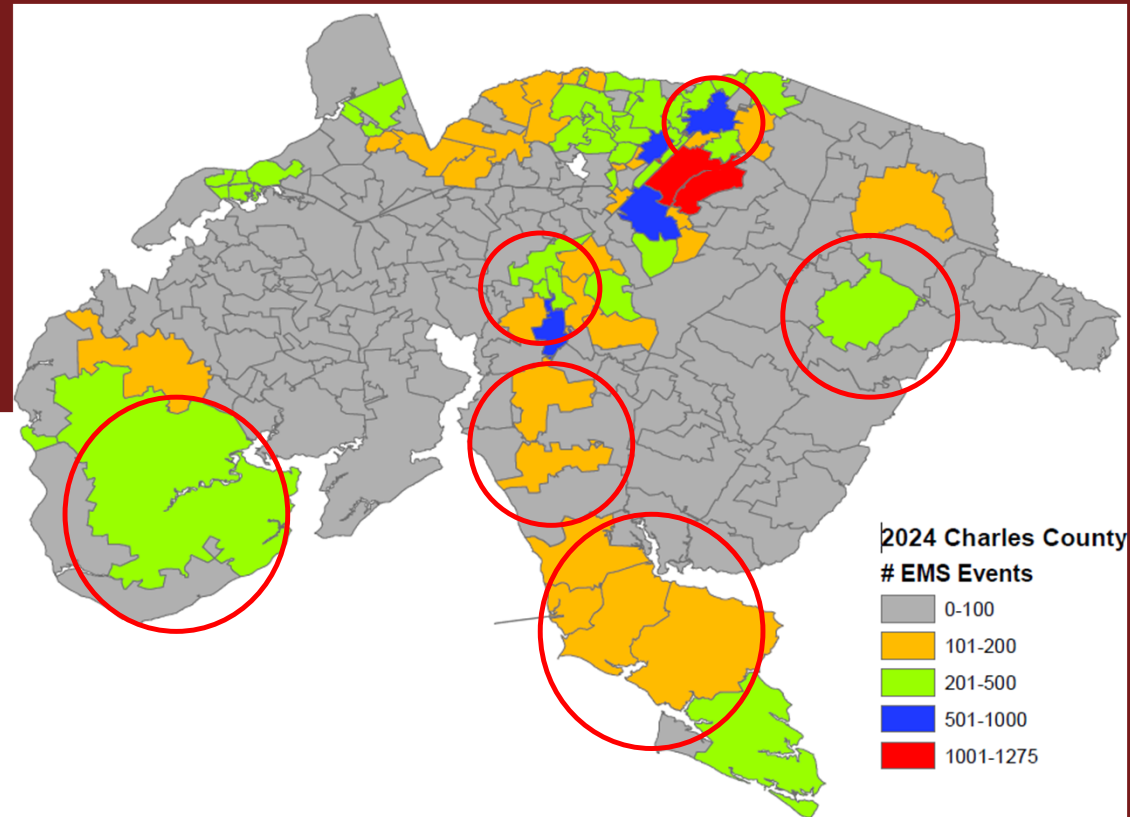
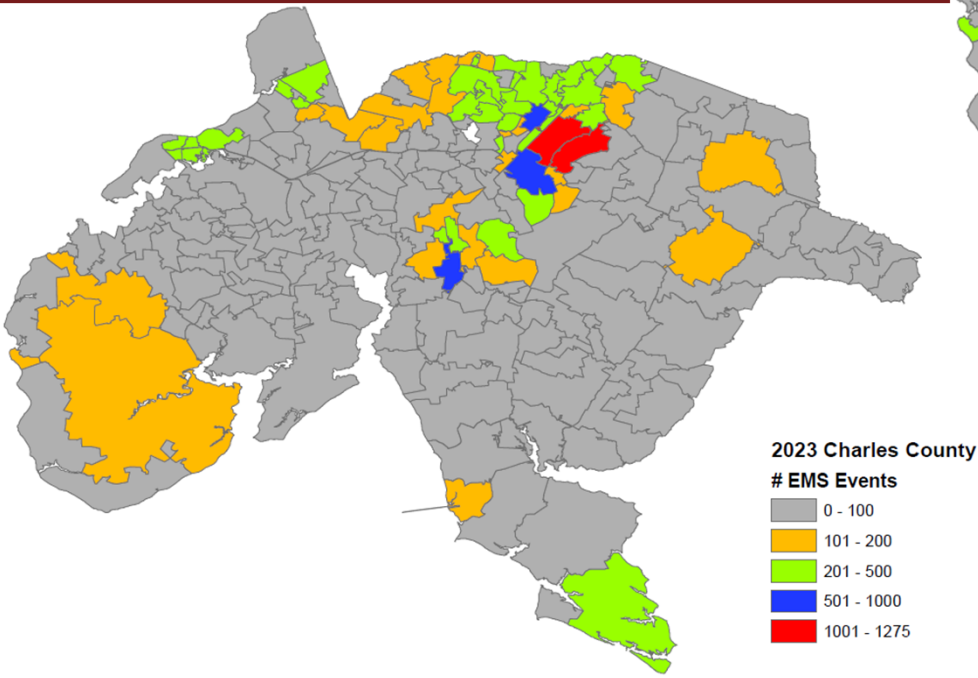
## Emergency Preparedness, Response & Safety

Provide high-quality service during emergent and non-emergent times of need.

### Data sharing:

- Meeting or exceeding National Standards
- Utilizing available data to measure workload
  - EMS Mapped Events FY 23 vs 24
- OpenGov Pages – work in progress
  - EMS
  - 9-1-1 Communications
  - Animal Control

# Mapped EMS Events



- Red circles indicate increases in call volume



# OpenGov Presentation



# Questions?





# Charles County Government

200 Baltimore Street, La Plata, MD

MD Relay Service: 7-1-1

Equal Opportunity Employer: It is the policy of Charles County to provide equal employment opportunity to all persons regardless of race, color, sex, age, national origin, religious or political affiliation or opinion, disability, marital status, sexual orientation, genetic information, gender identity or expression, or any other status protected by law.

**[www.CharlesCountyMD.gov](http://www.CharlesCountyMD.gov)**