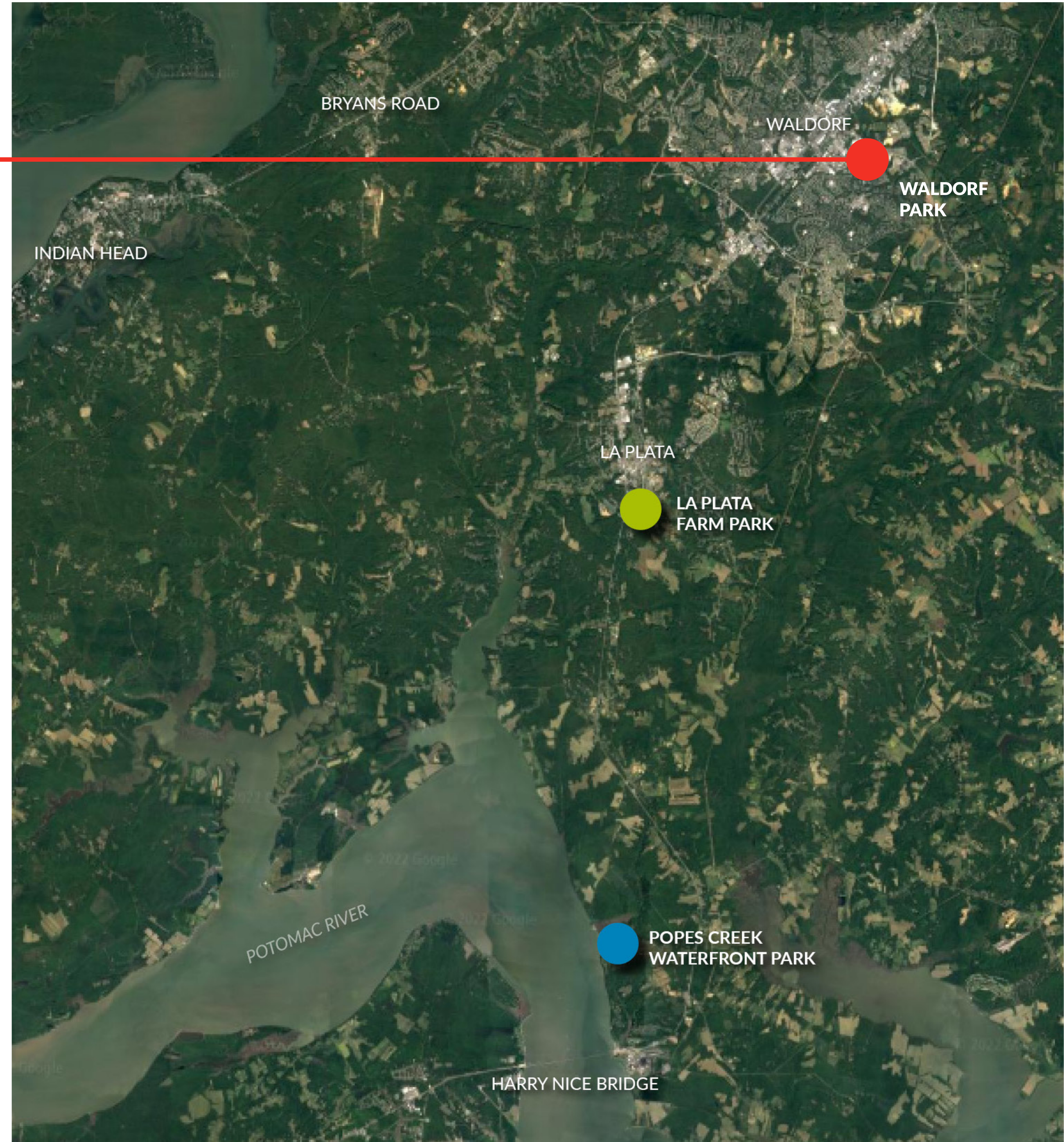
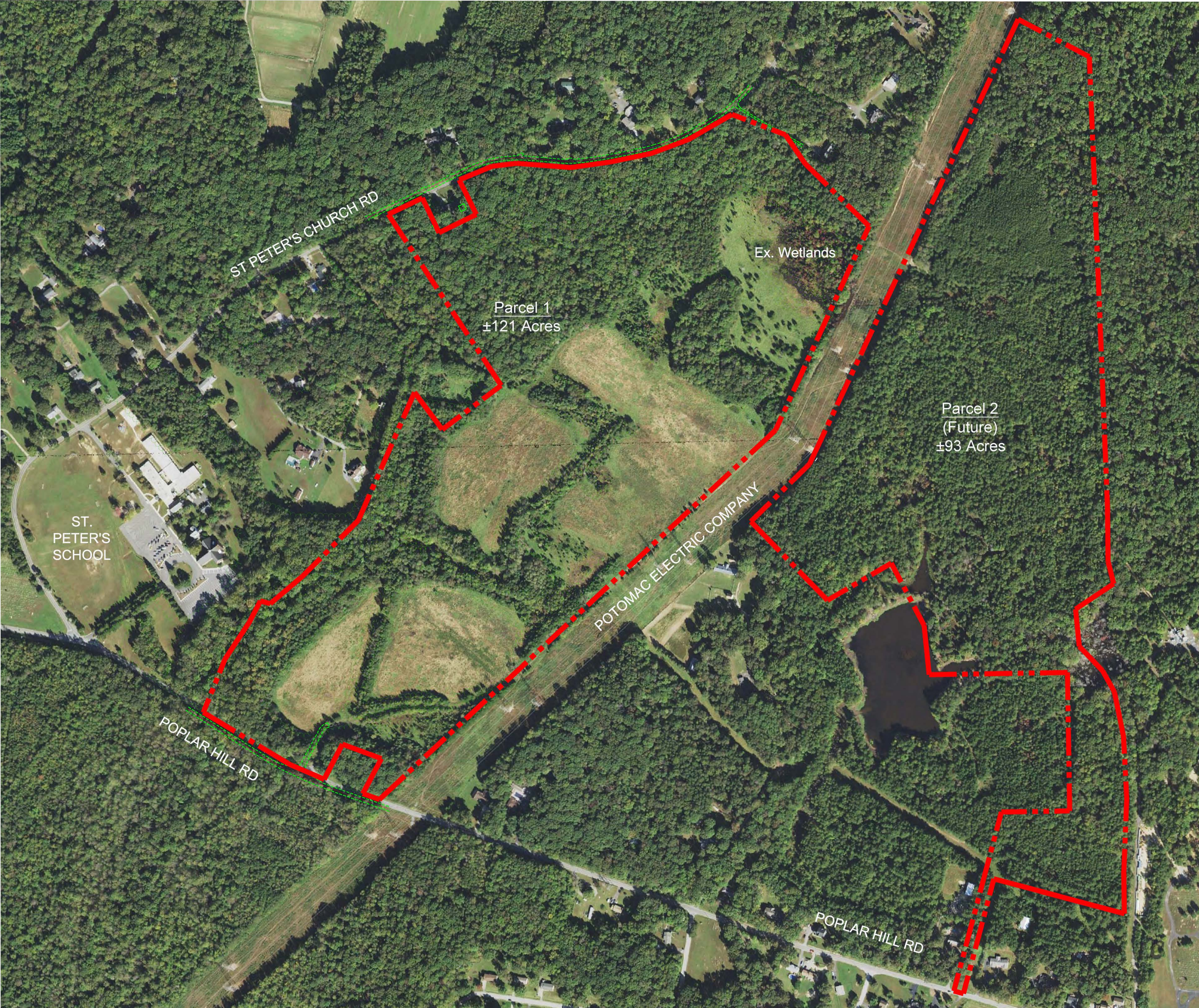


WALDORF PARK

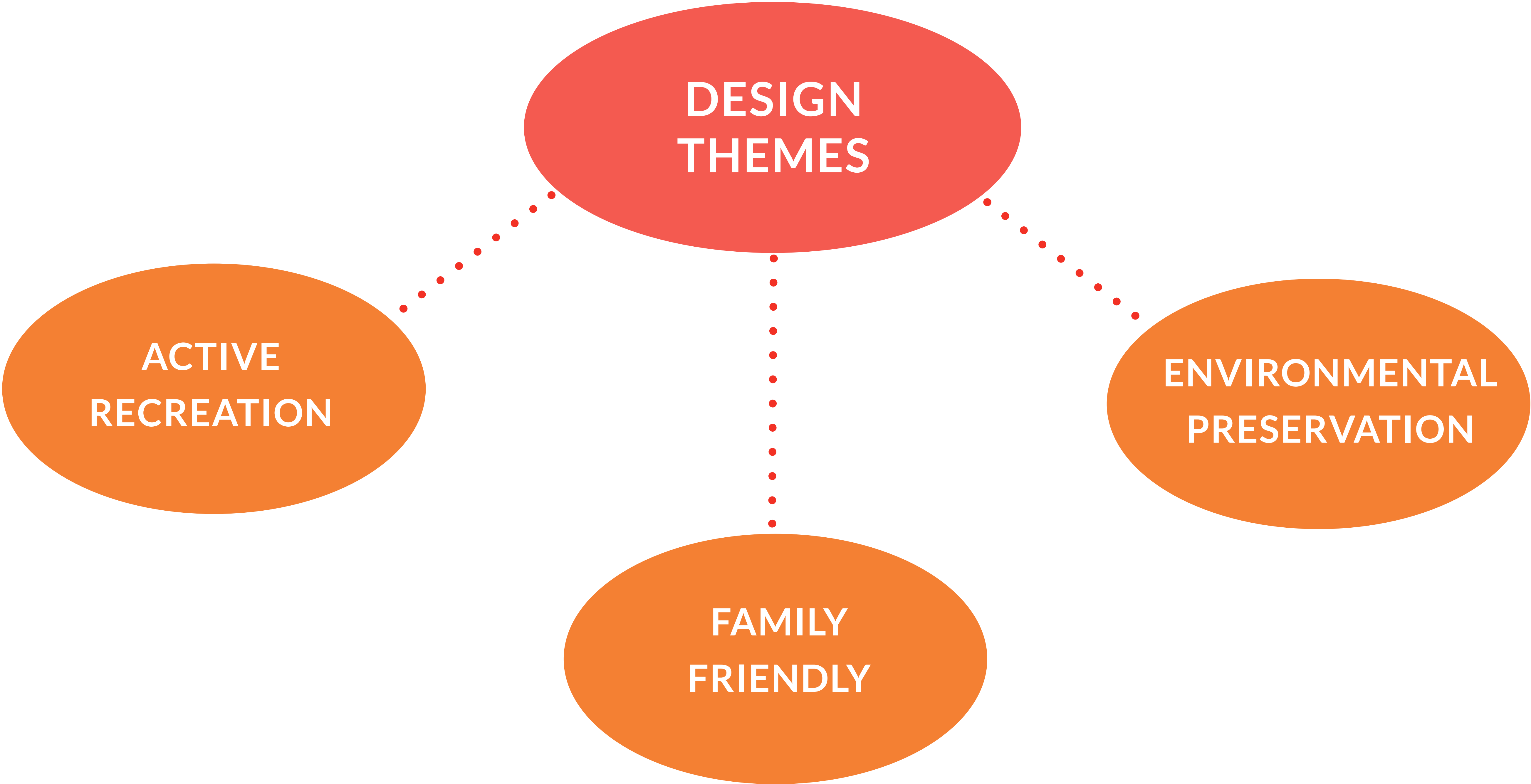




CHARLES COUNTY RECREATION, PARKS & TOURISM PARK MASTER PLANNING - PUBLIC OPEN HOUSE



WALDORF PARK - DESIGN THEMES



WALDORF PARK -TASK FORCE IDEAS

- HUB FOR ORGANIZED SPORTS AND SUPPORTING USES
- FAMILY ORIENTED INCLUDING RECREATION OPTIONS FOR VISITORS NOT PARTICIPATING IN SPORTS
- PASSIVE RECREATION THAT COMPLEMENT NATURAL RESOURCES



**CHARLES COUNTY RECREATION, PARKS & TOURISM
PARK MASTER PLANNING - PUBLIC OPEN HOUSE**



WALDORF PARK - PRECEDENT IMAGES



WAYPOINT SIGNAGE / ART WORK



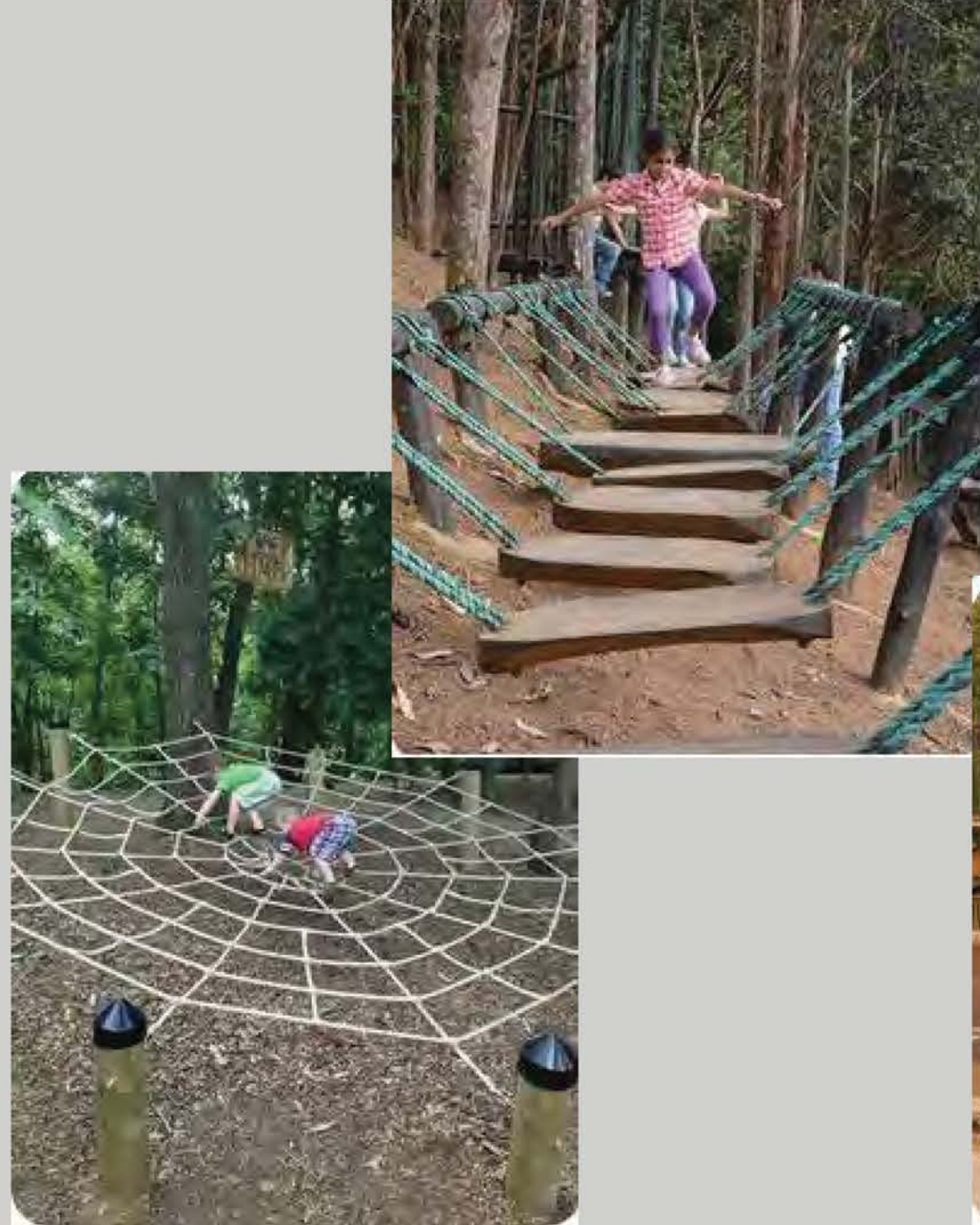
FULL COURT BASKETBALL



FOOD TRUCK AREAS



PICKLE BALL COMPLEX

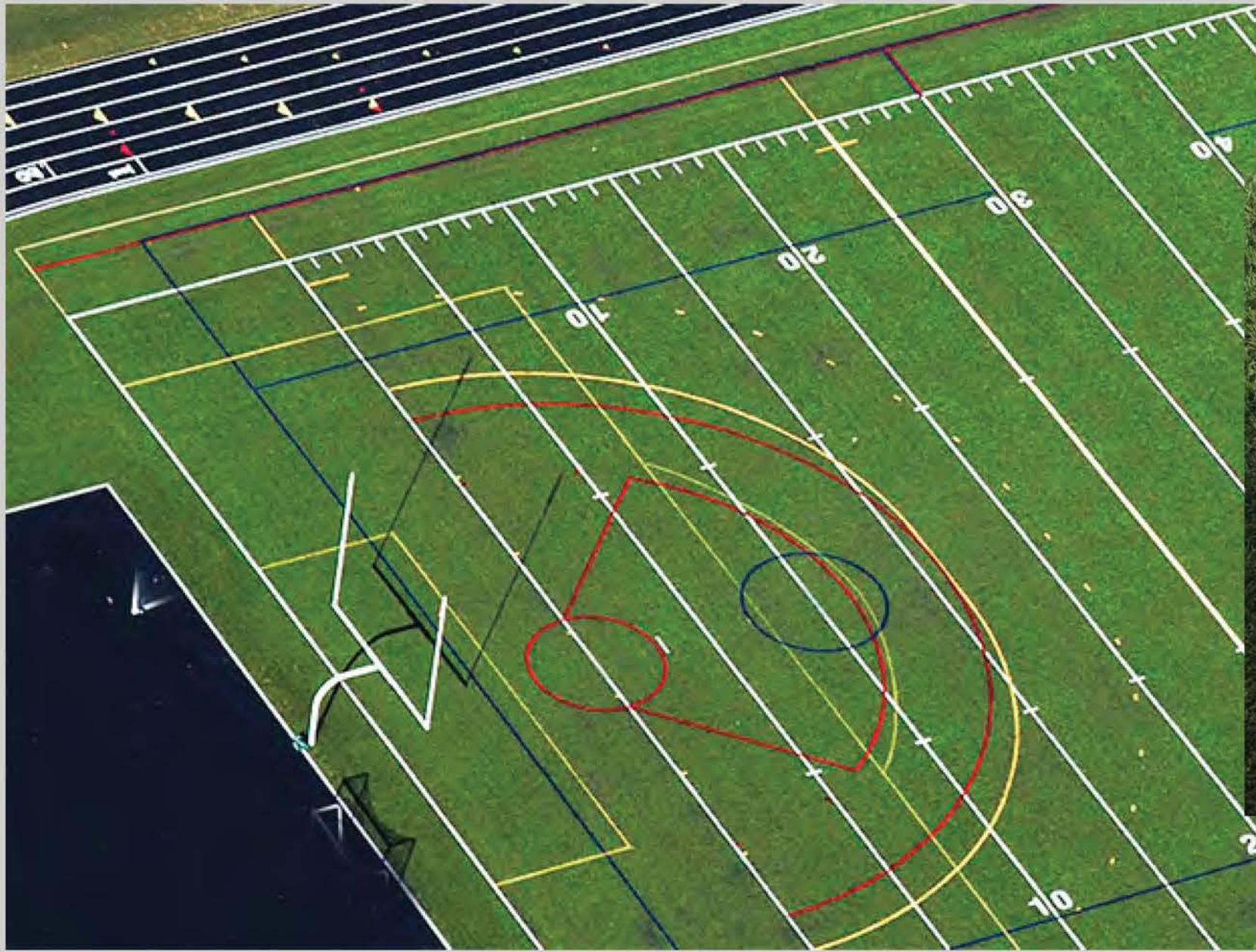


PLAYGROUND AREAS

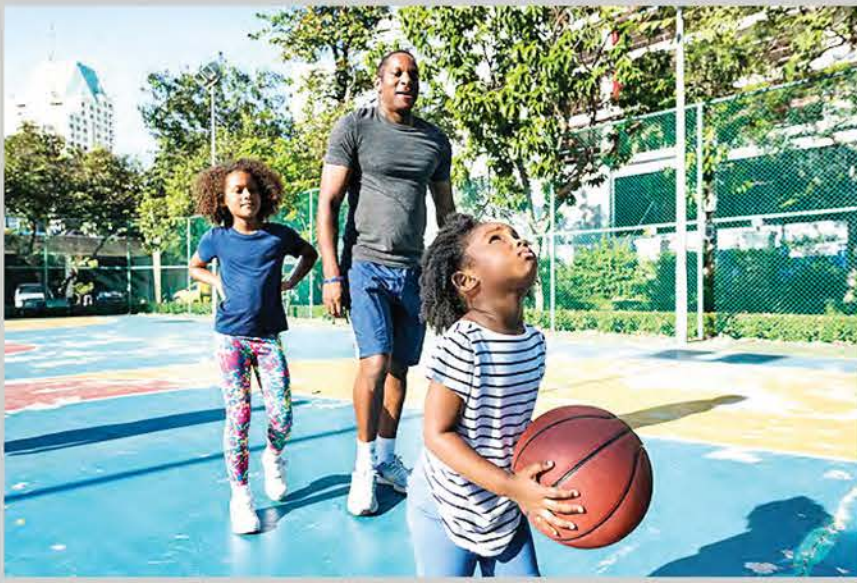
WALDORF PARK - PRECEDENT IMAGES



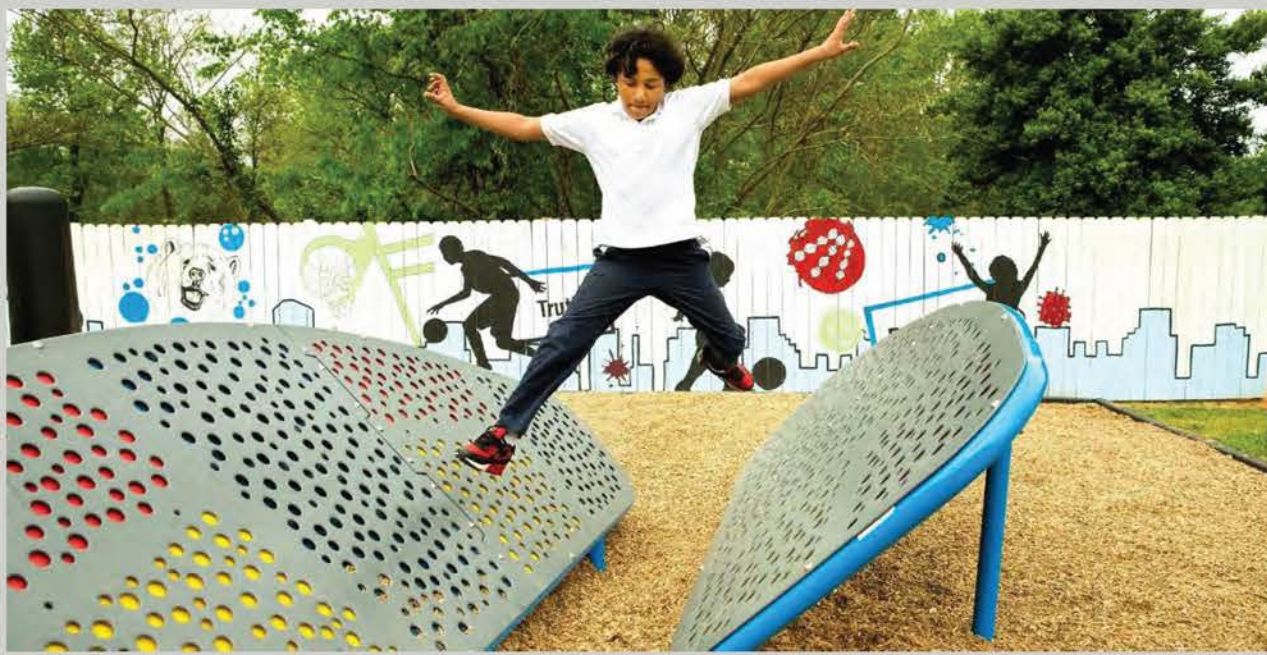
3v3 BASKETBALL COURTS



MULTI-USE FIELDS



CHILDREN'S HALF COURT BASKETBALL

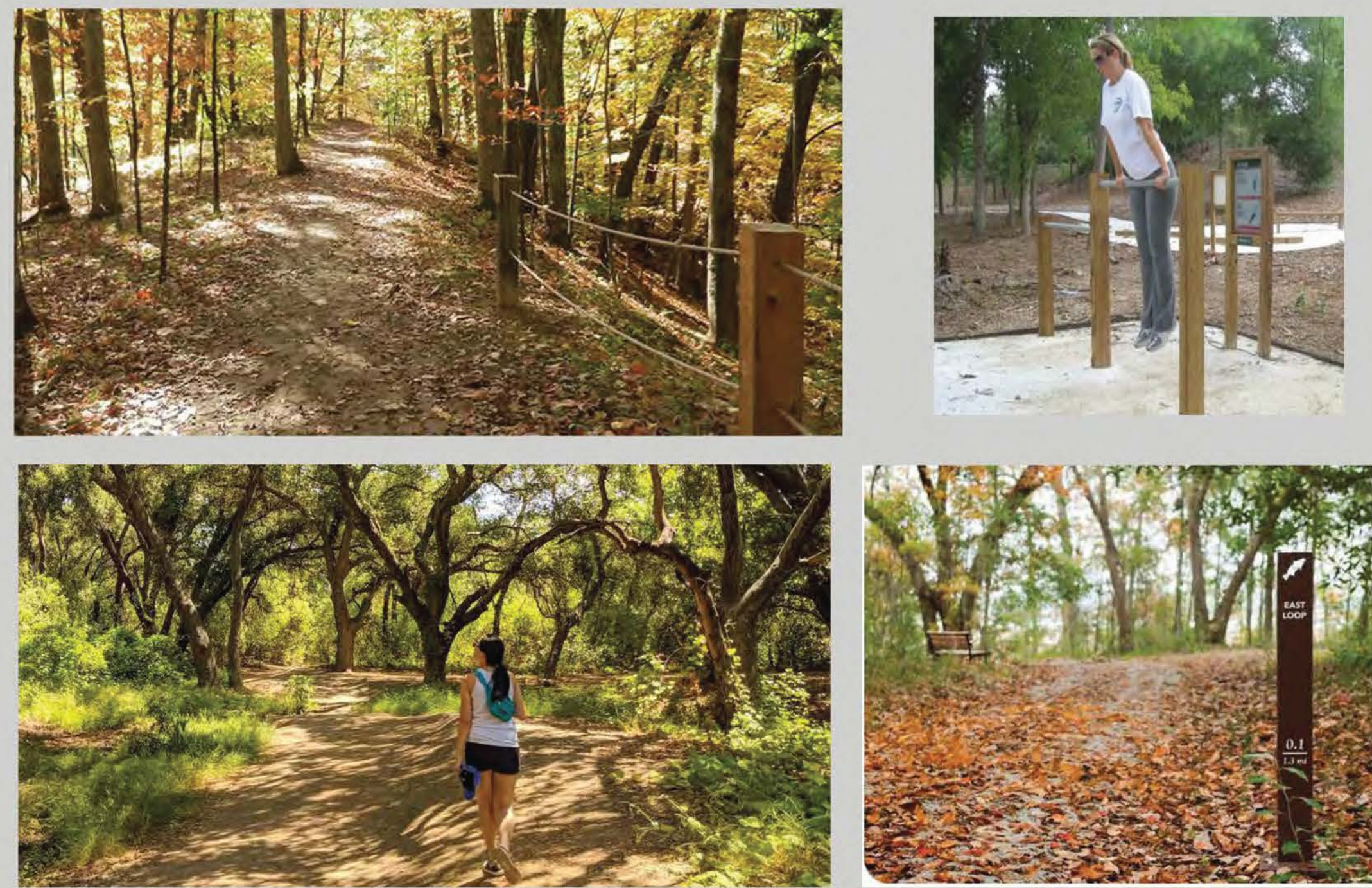


ADULT NINJA / OBSTACLE COURSE



PEDESTRIAN BRIDGE CROSSINGS

WALDORF PARK - PRECEDENT IMAGES



WALKING/HIKING WITH POSSIBLE EXERCISE STATIONS



PAVILLIONS / SHADE STRUCTURES



SMALL, LARGE AND ALL BREED DOG PARKS



RESTROOM FACILITIES

WALDORF PARK - CONCEPT PLAN



KEY ELEMENTS

- 1 WAYPOINT SIGNAGE / ART WORK
- 2 FULL COURT BASKETBALL COURTS
- 3 FOOD TRUCK AREAS
- 4 PICKLE BALL COURTS
- 5 PLAYGROUND

- 6 CHILDREN'S HALF COURT BASKETBALL
- 7 3v3 BASKETBALL COURTS
- 8 MAINTENANCE BUILDING
- 9 MULTI-USE FIELDS
- 10 PLAYGROUND WITH ADA ACCESSIBILITY

- 11 LARGE DOG PARK
- 12 WOODED CHILD'S IMAGINATION PLAYGROUND
- 13 SMALL DOG PARK
- 14 ADULT NINJA / OBSTACLE COURSE
- 15 ALL BREEDS DOG PARK

- 16 WALKING / HIKING TRAILS WITH POSSIBLE EXERCISE STATIONS
- 17 EXISTING REGULATED WETLAND AREAS
- 18 RESTROOM FACILITIES
- 19 PAVILLION / SHADE STRUCTURES
- 20 PEDESTRIAN BRIDGE CROSSINGS

- 21 RECREATIONAL BUILDING ±34,000 SF
 - STRIPED FOR (2) TENNIS COURTS, (2) BASKETBALL COURTS, OR (8) PICKLE BALL COURTS
 - BATH / LOCKER ROOM FACILITIES
 - OFFICE SPACE
 - STORAGE AREAS



WALDORF PARK - ENLARGEMENT 'A'



KEY ELEMENTS

- 1** WAYPOINT SIGNAGE / ART WORK
- 2** FULL COURT BASKETBALL COURTS
- 3** FOOD TRUCK AREAS
- 4** PICKLE BALL COURTS
- 5** PLAYGROUND
- 6** CHILDREN'S HALF COURT BASKETBALL
- 7** 3v3 BASKETBALL COURTS
- 15** ALL BREEDS DOG PARK
- 16** WALKING / HIKING TRAILS WITH POSSIBLE EXERCISE STATIONS
- 17** EXISTING REGULATED WETLAND AREAS
- 19** PAVILLION / SHADE STRUCTURES
- 20** PEDESTRIAN BRIDGE CROSSINGS
- 21** RECREATIONAL BUILDING ±34,000 SF
 - STRIPED FOR (2) TENNIS COURTS, (2) BASKETBALL COURTS, OR (8) PICKLE BALL COURTS
 - BATH / LOCKER ROOM FACILITIES
 - OFFICE SPACE
 - STORAGE AREAS

WALDORF PARK - ENLARGEMENT 'B'



KEY ELEMENTS

- 1 WAYPOINT SIGNAGE / ART WORK
- 3 FOOD TRUCK AREAS
- 5 PLAYGROUND
- 9 MULTI-USE FIELDS
- 11 LARGE DOG PARK
- 12 WOODED CHILD'S IMAGINATION PLAYGROUND
- 13 SMALL DOG PARK
- 14 ADULT NINJA / OBSTACLE COURSE
- 16 WALKING / HIKING TRAILS WITH POSSIBLE EXERCISE STATIONS
- 17 EXISTING REGULATED WETLAND AREAS
- 18 RESTROOM FACILITIES
- 19 PAVILLION / SHADE STRUCTURES