

CHARLES COUNTY RECREATION, PARKS, & TOURISM



PARK MASTER PLANNING PUBLIC OPEN HOUSE
FEBRUARY 7 & 8, 2023





CHARLES COUNTY, MARYLAND DEPT. OF RECREATION, PARKS, & TOURISM



DESIGN CONSULTANTS

- LA PLATA FARM PARK
- POPES CREEK WATERFRONT PARK



DESIGN CONSULTANTS

- WALDORF PARK



COUNTY WIDE PARK PLANNING PROCESS

SITE SPECIFIC PARK MASTER PLANNING

LA PLATA FARM PARK

WALDORF PARK

POPES CREEK WATERFRONT PARK

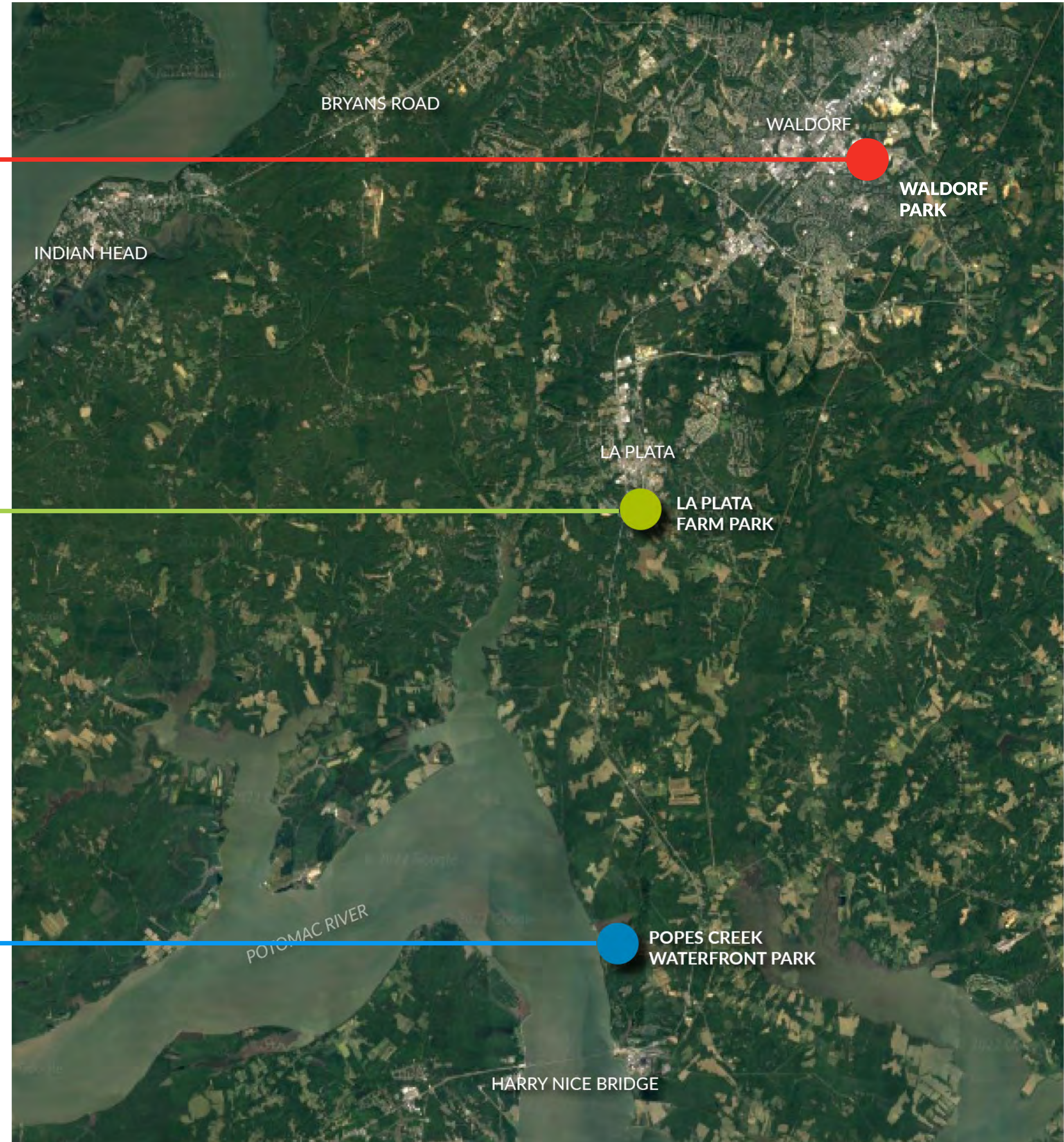
BREAK OUT ROOMS

RECONVENE - Q&A

WALDORF PARK

LA PLATA FARM PARK

POPES CREEK WATERFRONT PARK



COUNTY-WIDE PARK PLANNING



- PARK AND RECREATION FACILITIES
- ACTIVE AND PASSIVE USES, LINEAR NETWORKS
- GEOGRAPHICAL DISTRIBUTION
- DIVERSITY OF AMENITIES / PROGRAMS
- ATTENTIVE TO A SPECTRUM OF USERS AND THEIR PREFERENCES
- COUNTY IDENTITY AND VALUES; RESPONDS TO NEEDS AND PRIORITIES

LAND PRESERVATION PARK AND RECREATION PLAN VISION STATEMENT:

CHARLES COUNTY IS A PLACE WHERE ALL PEOPLE THRIVE, AND BUSINESSES GROW AND PROSPER; WHERE THE PRESERVATION OF OUR HERITAGE AND ENVIRONMENT IS PARAMOUNT; WHERE GOVERNMENT SERVICES TO ITS CITIZENS ARE PROVIDED AT THE HIGHEST LEVEL OF EXCELLENCE; AND WHERE THE QUALITY OF LIFE IS THE BEST IN THE NATION.



PARK MASTER PLANNING PROCESS

CHARLES COUNTY RECREATION, PARKS & TOURISM
PARK MASTER PLANNING - PUBLIC OPEN HOUSE



PARK MASTER PLANNING PROCESS

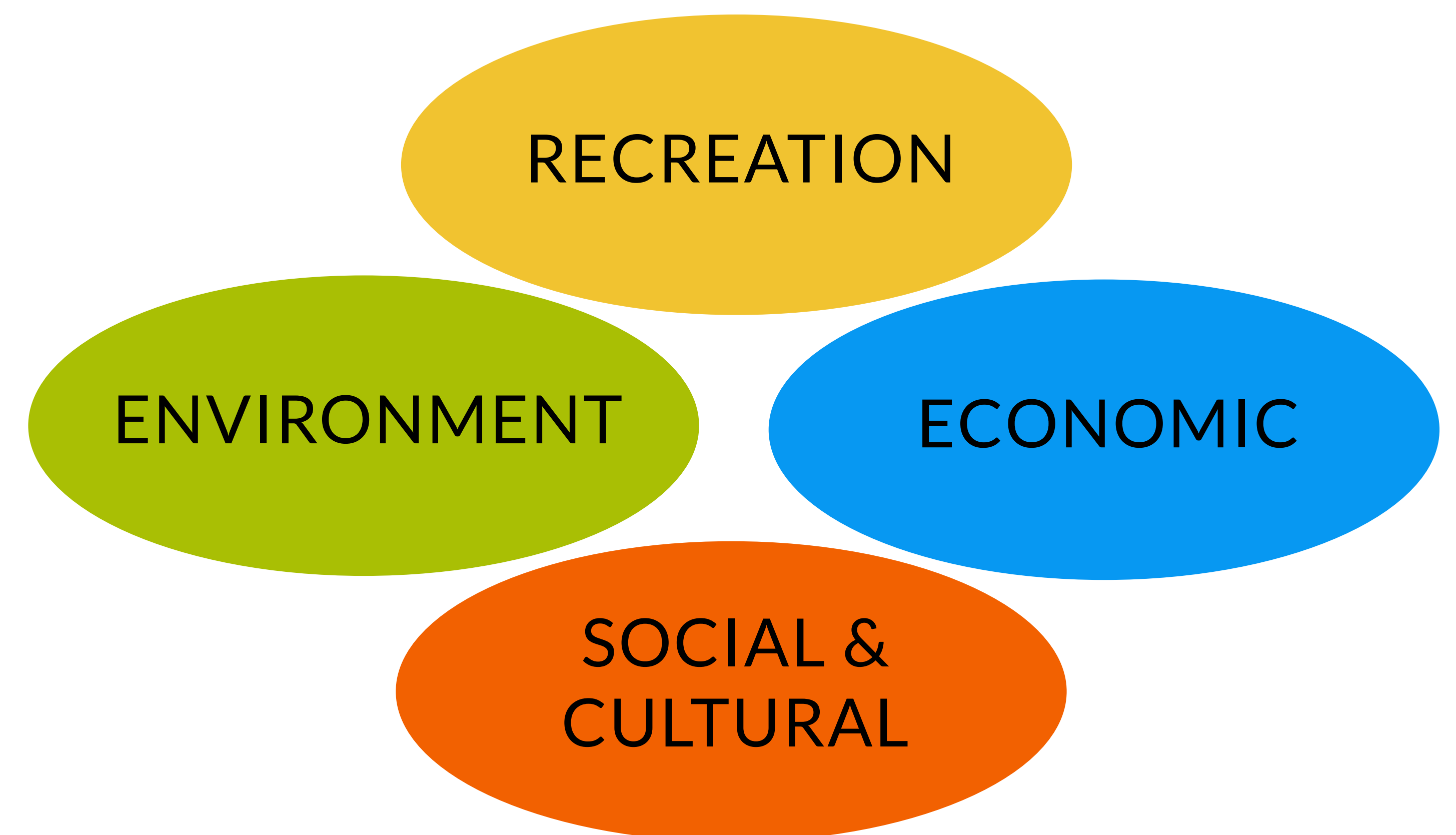


CHARLES COUNTY RECREATION, PARKS & TOURISM
PARK MASTER PLANNING - PUBLIC OPEN HOUSE





- UNDERSTANDING OF PROJECT SITE
- ASSESS COMMUNITY VALUES, NEEDS, AND PRIORITIES
- ESTABLISH A VISION & THEME FOR EACH PARK
- DEFINE A SET OF GUIDING PRINCIPLES THAT BECOMES A ROAD MAP FOR CONCEPT DESIGN





QUALITIES OF GREAT PARKS

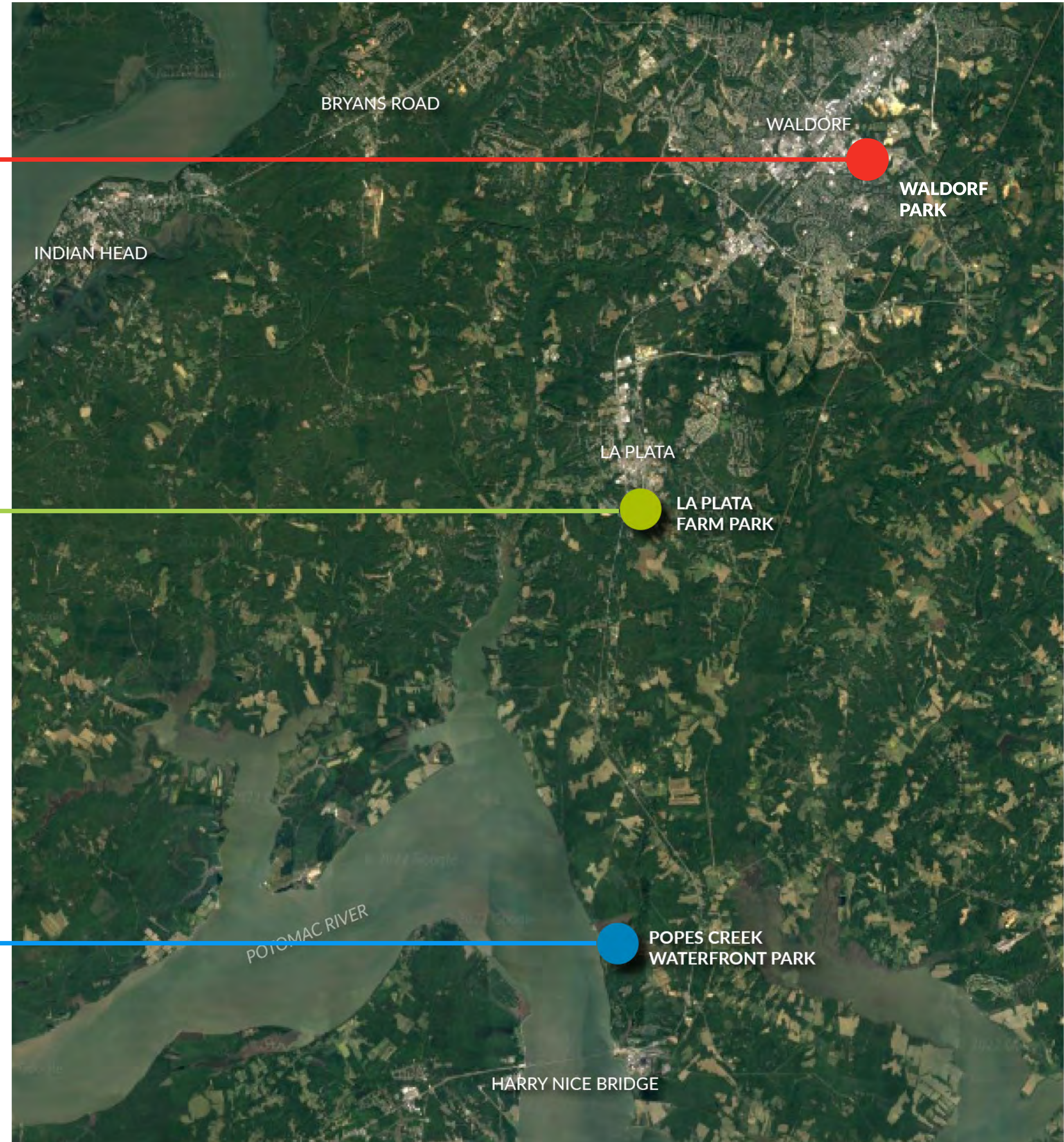
- SAFE AND ACCESSIBLE FOR ALL USERS
- POSITIVE, ENGAGING, AND MEMORABLE EXPERIENCES
- FLEXIBLE AND ADAPTABLE
- ACTIVITIES FOR ALL AGE GROUPS
- RELEVANT TO THE COMMUNITIES THEY SERVE
- MAINTAINABLE AND CARED FOR



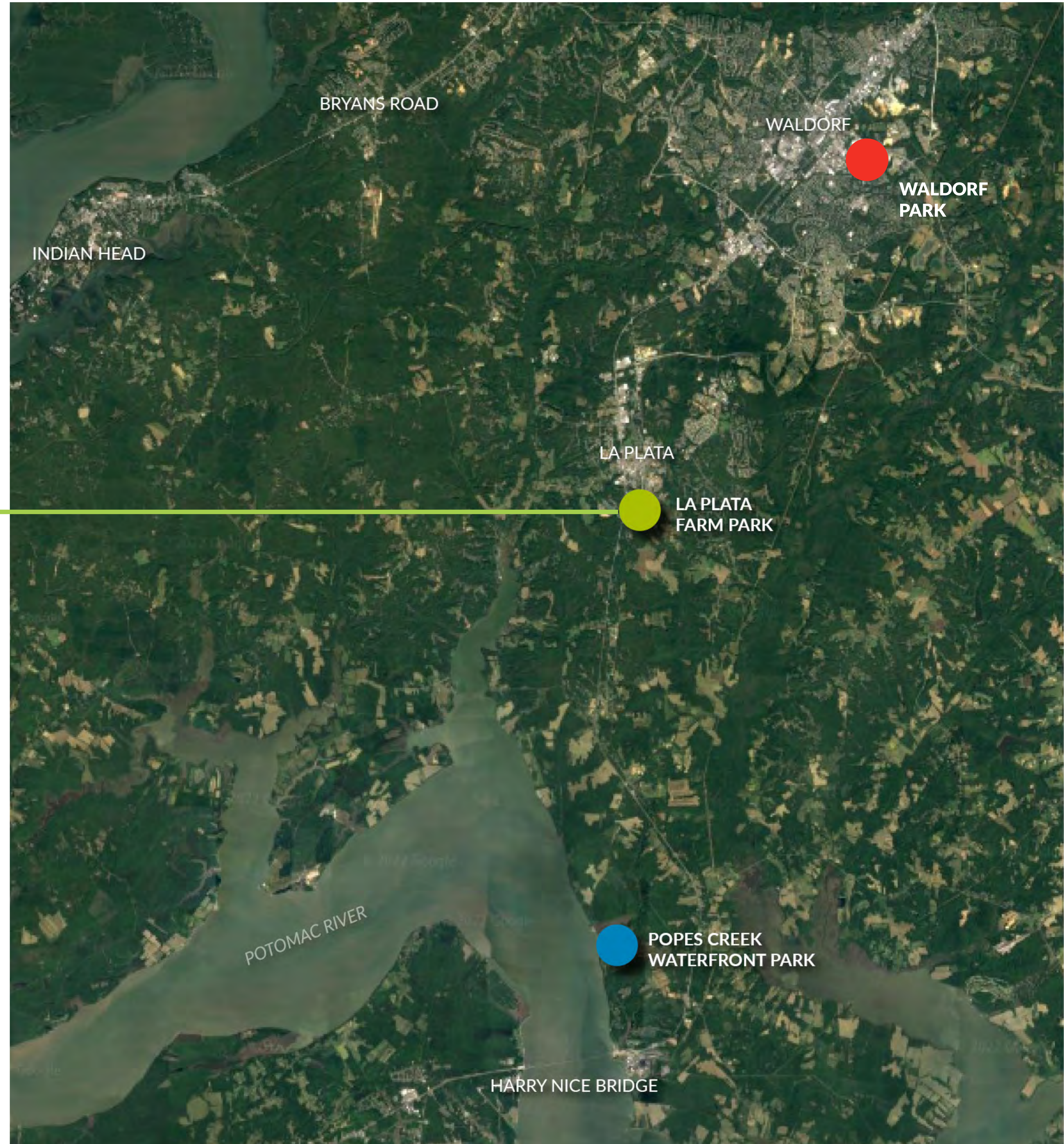
WALDORF PARK

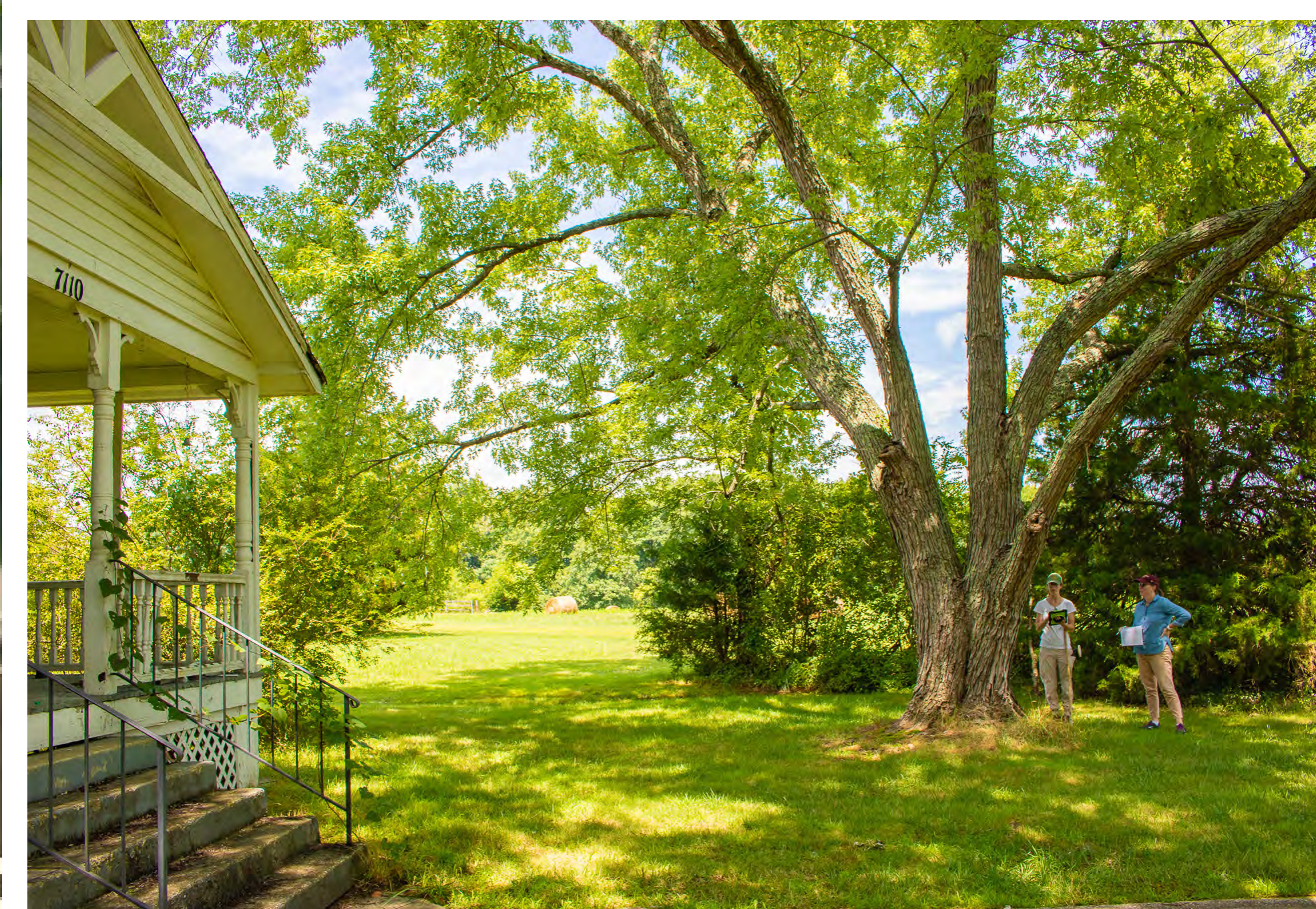
LA PLATA FARM PARK

POPES CREEK WATERFRONT PARK



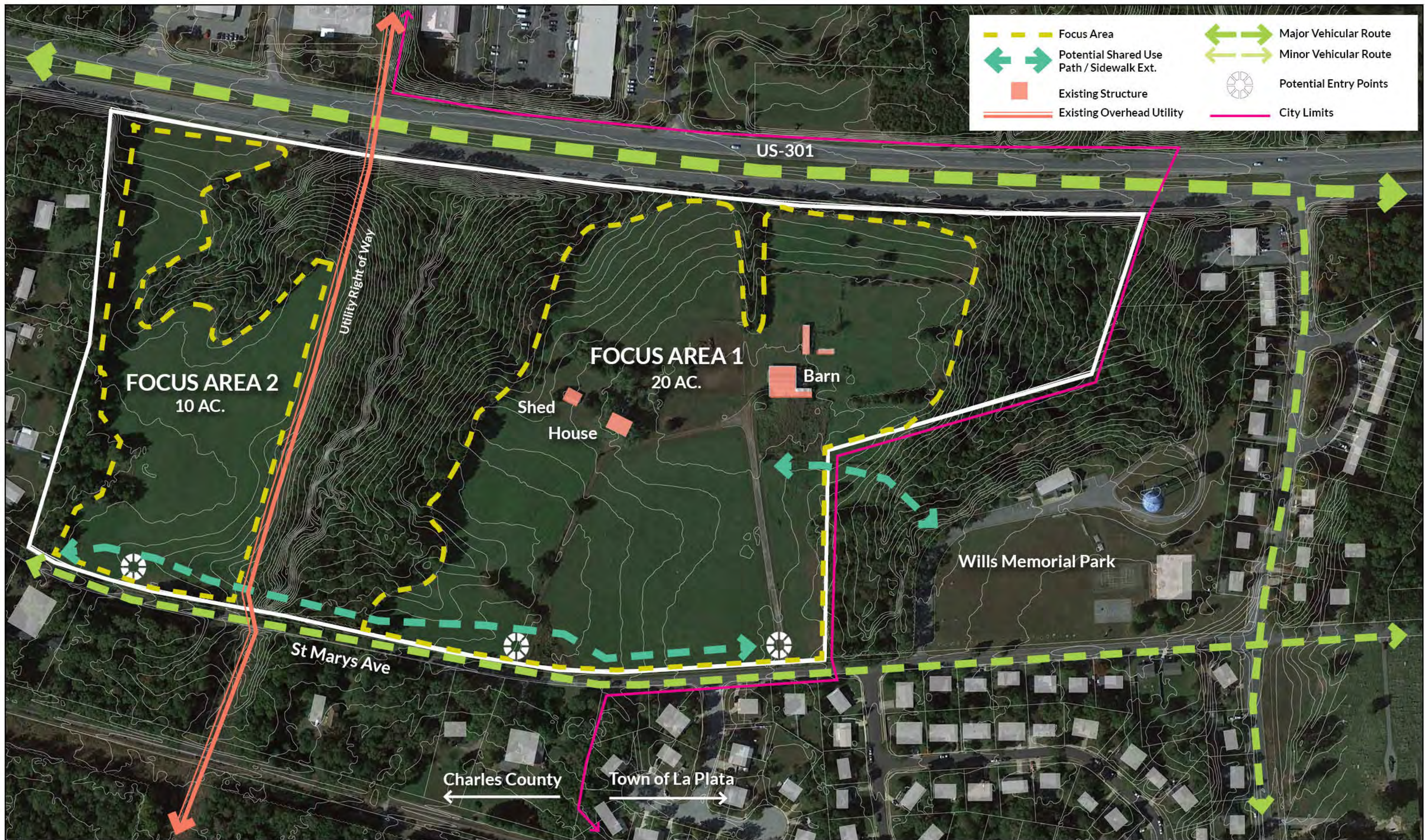
LA PLATA FARM PARK





CHARLES COUNTY RECREATION, PARKS & TOURISM PARK MASTER PLANNING - PUBLIC OPEN HOUSE

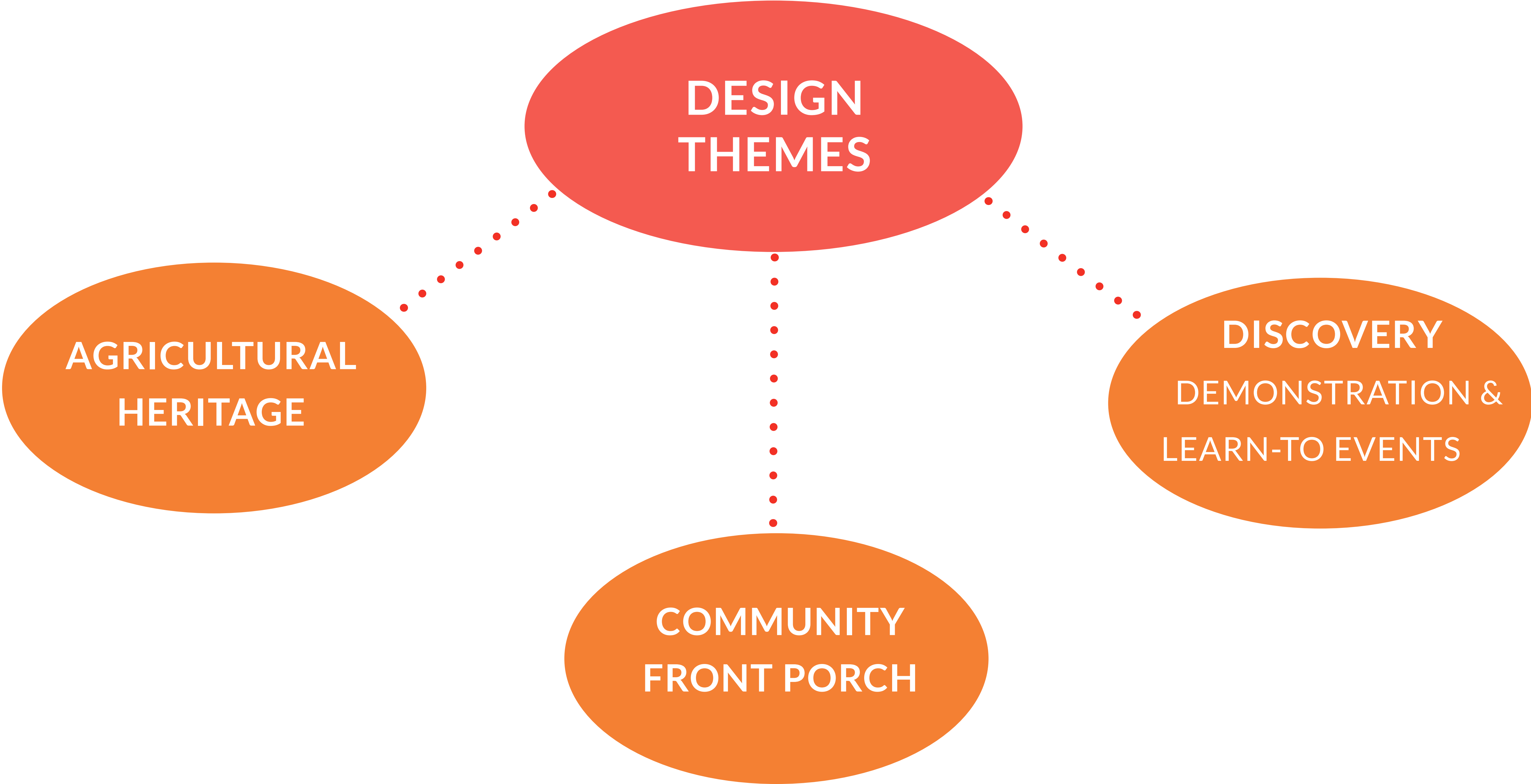




CHARLES COUNTY RECREATION, PARKS & TOURISM PARK MASTER PLANNING - PUBLIC OPEN HOUSE



LA PLATA FARM PARK - DESIGN THEMES



LA PLATA FARM PARK - TASK FORCE IDEAS

- A BALANCE OF ACTIVE & PASSIVE RECREATION
- EMPHASIS ON PROGRAMMED ACTIVITIES
- INTEGRATE OPTIONS FOR REVENUE GENERATING ACTIVITIES
- SOCIAL CONNECTIONS WITH GARDENING & FARM BASED ORGANIZATIONS
- PHYSICAL CONNECTIONS TO WILLS MEMORIAL PARK



LA PLATA FARM PARK - PRECEDENT IMAGES



RENOVATED BARN + EDUCATION CENTER



EVENT LAWN



RAISED GARDEN BEDS



MEADOW + APIARY



GREENHOUSE + CULINARY GARDEN



COMMUNITY TABLES

LA PLATA FARM PARK - PRECEDENT IMAGES



PICNIC GROVE



TRAILS



LABYRINTH



SUNFLOWER FIELDS



DOG PARK



PAVILION

LA PLATA FARM PARK - PRECEDENT IMAGES



DESTINATION PLAYGROUND



HOLIDAY LIGHT DISPLAY



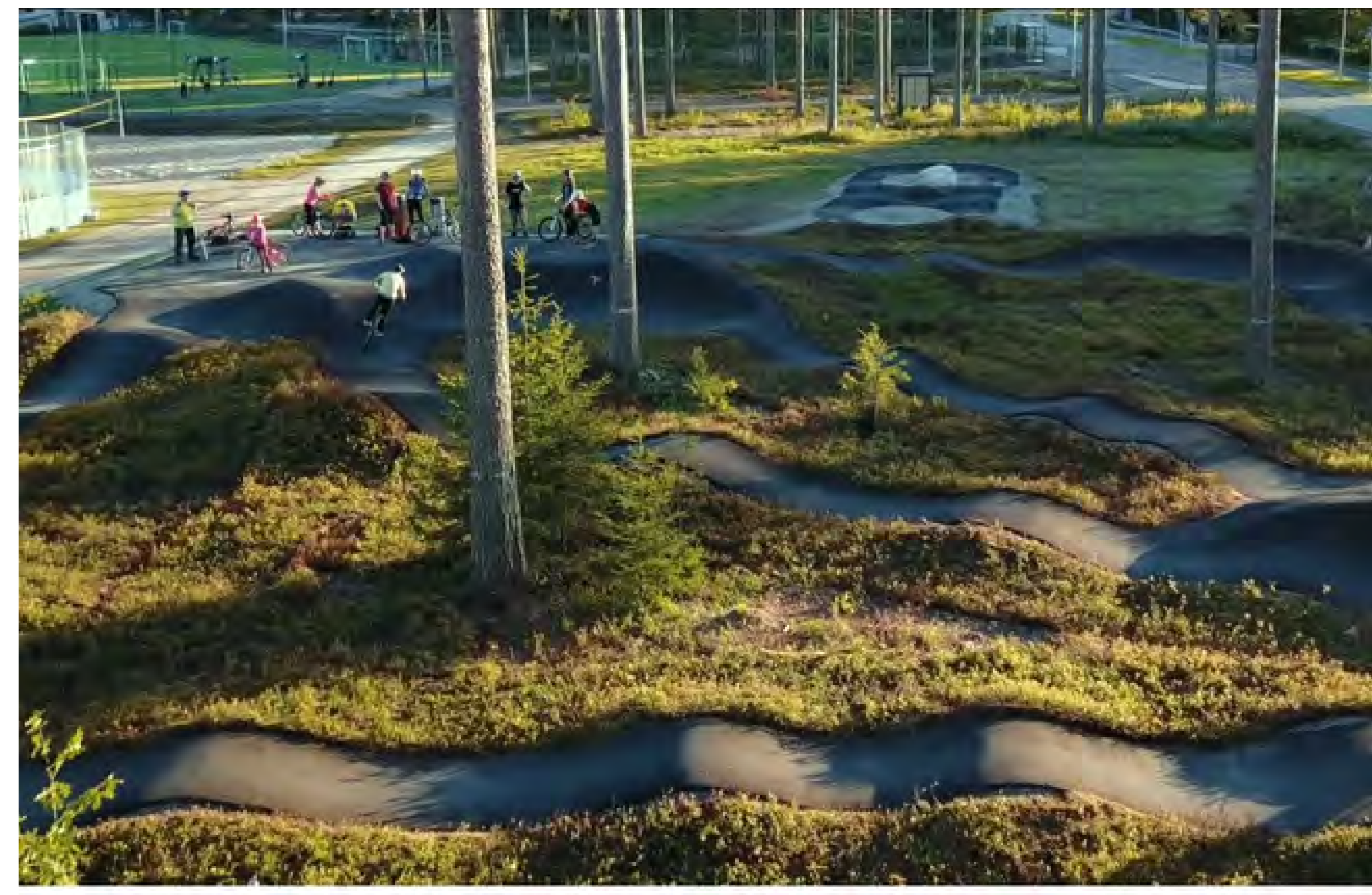
FARM THEMED SPLASH PAD



MEADOW MOUNDS + TRAILS



SKATE SPOT

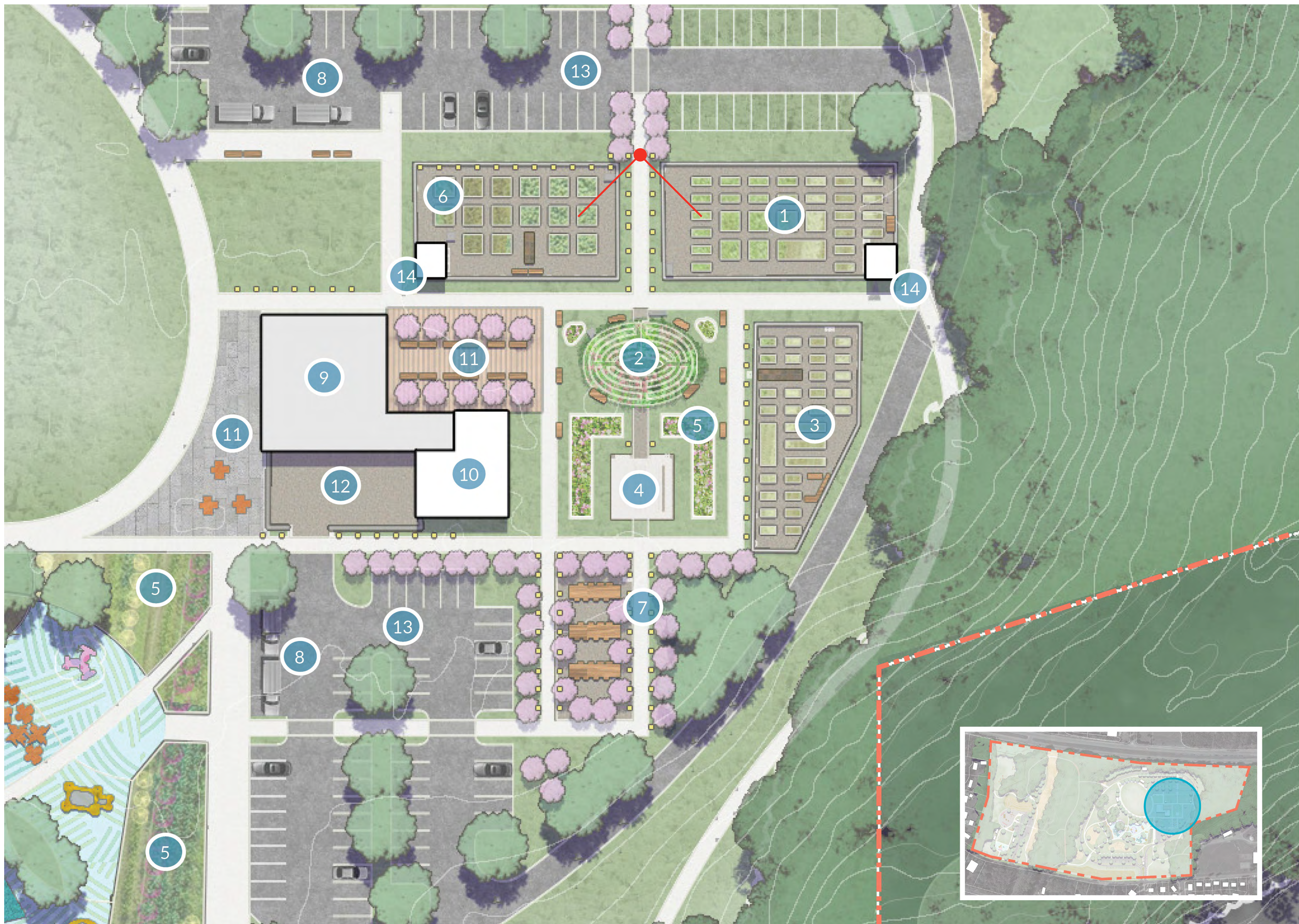


BIKE PUMP TRACK

LA PLATA FARM PARK - CONCEPT PLAN



LA PLATA FARM PARK - GARDENS + EDUCATION CENTER



KEY ELEMENTS

- 1 COMMUNITY GARDEN
- 2 LABYRINTH & SENSORY GARDEN
- 3 YOUTH GARDEN
- 4 GREENHOUSE CLASSROOM
- 5 DEMONSTRATION GARDENS
- 6 MARKET GARDEN
- 7 COMMUNITY TABLES
- 8 FOODTRUCK PULLOFF
- 9 RENOVATED BARN & EDUCATION CENTER
- 10 COMMUNITY KITCHEN
- 11 PLAZA
- 12 BARNYARD & SERVICE LOT
- 13 PARKING
- 14 STORAGE SHED

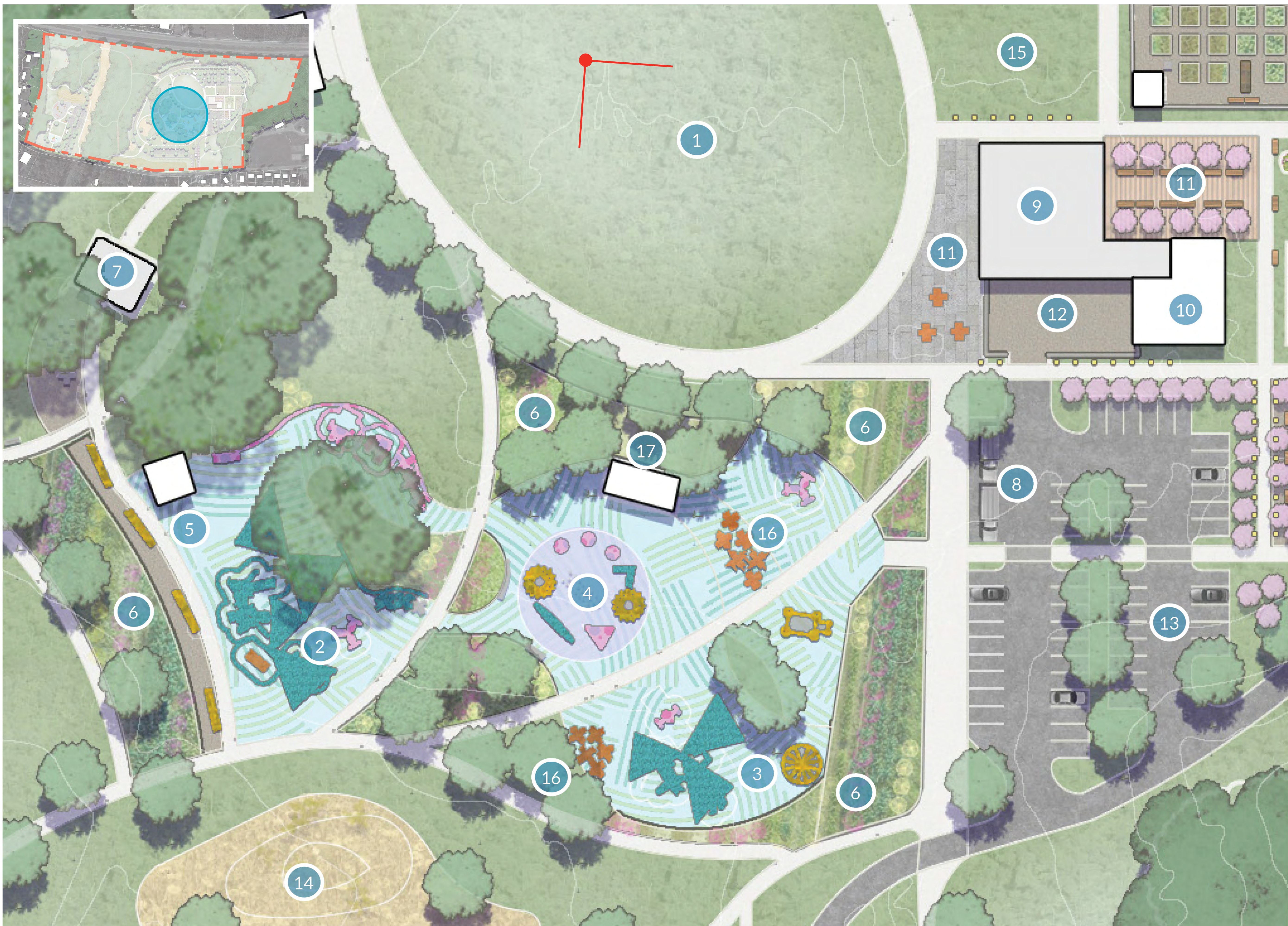


NOT TO SCALE

LA PLATA FARM PARK - GARDENS + GREENHOUSE



LA PLATA FARM PARK - DESTINATION PLAY



KEY ELEMENTS

- 1 EVENT & EXHIBIT LAWN
- 2 5-12 YEAR OLD PLAYGROUND
- 3 2-5 YEAR OLD PLAYGROUND
- 4 FARM-THEMED SPLASHPAD
- 5 PAVILION
- 6 DEMONSTRATION GARDENS
- 7 RENOVATED HOUSE & COMFORT STATION
- 8 FOODTRUCK PULLOFF
- 9 RENOVATED BARN & VISITOR CENTER
- 10 COMMUNITY KITCHEN
- 11 PLAZA
- 12 BARNYARD & SERVICE LOT
- 13 PARKING
- 14 MEADOW MOUNDS
- 15 HOLIDAY DISPLAY AREA
- 16 PICNIC TABLES
- 17 PUMPHOUSE



NOT TO SCALE

LA PLATA FARM PARK - EVENT LAWN



LA PLATA FARM PARK - ACTIVE RECREATION

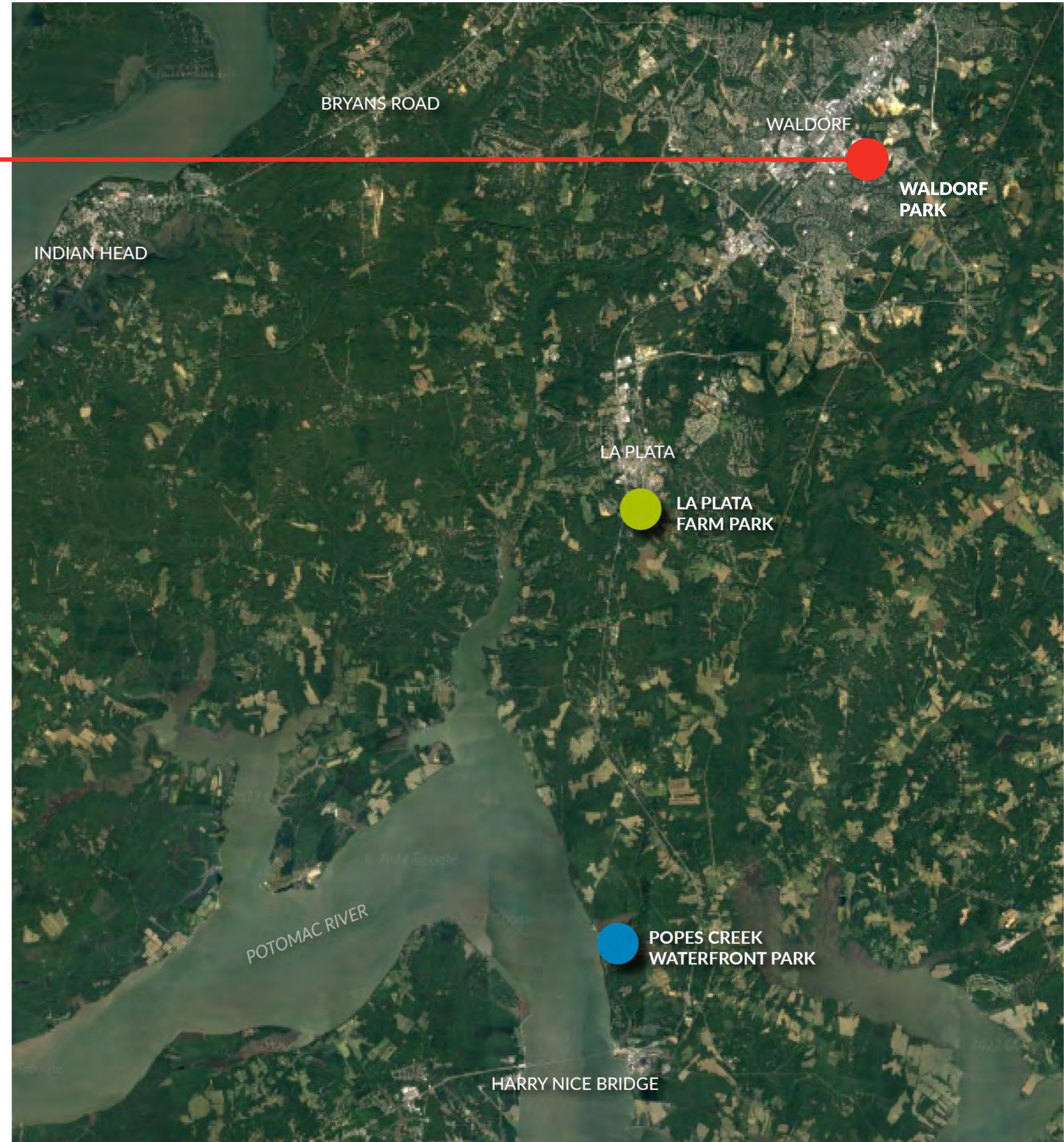


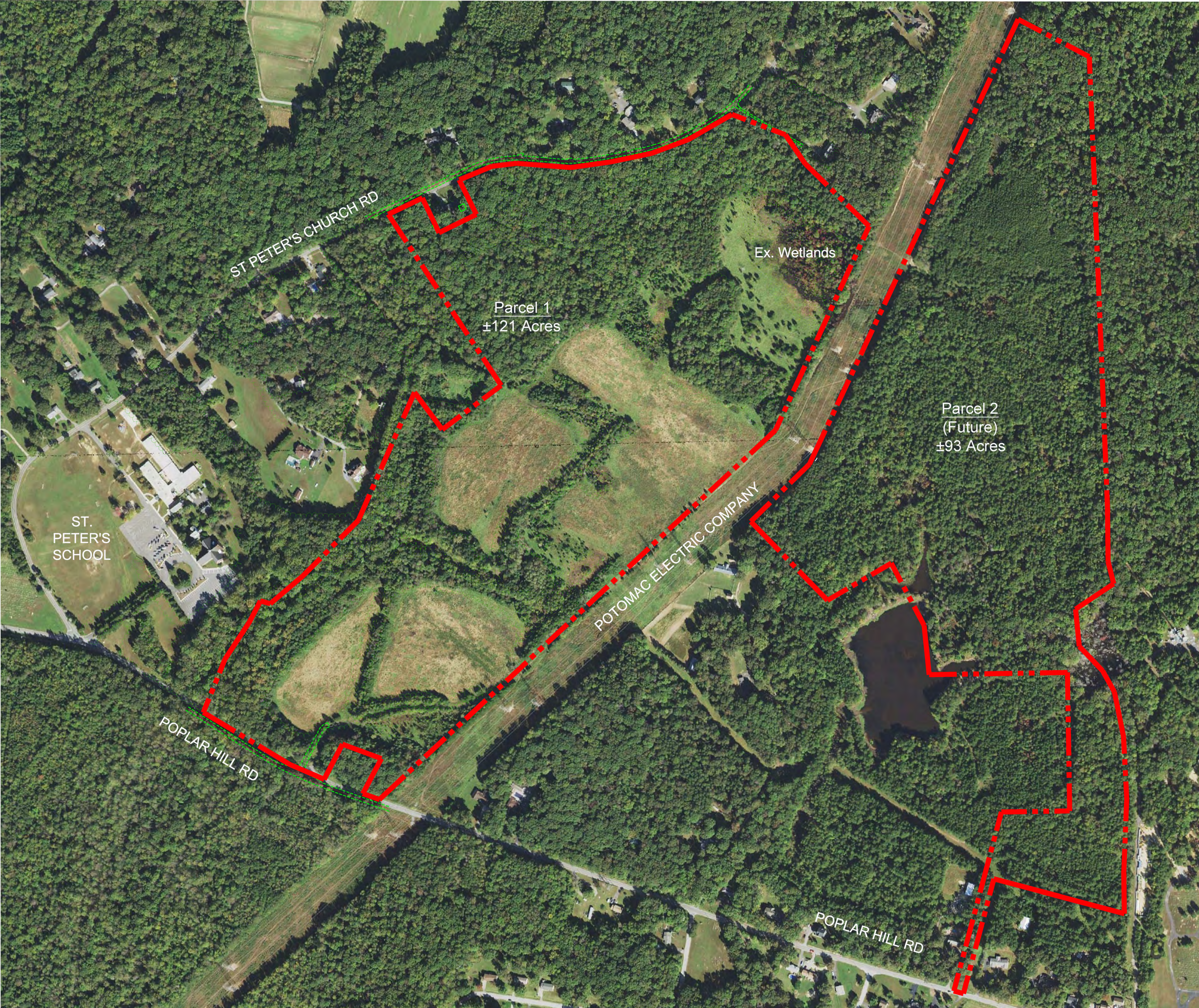
KEY ELEMENTS

- 1 DOG PARK
- 2 BIKE PUMPTRACK
- 3 SKATE PARK
- 4 PLAZA
- 5 PAVILION
- 6 PLAYGROUND
- 7 LAWN
- 8 FOODTRUCK PULLOFF
- 9 PARKING
- 10 BOARDWALK TRAIL
- 11 FOREST PATH
- 12 SUNFLOWER FIELD
- 13 SIDEWALK
- 14 COMFORT STATION
- 15 PICNIC TABLES



WALDORF PARK

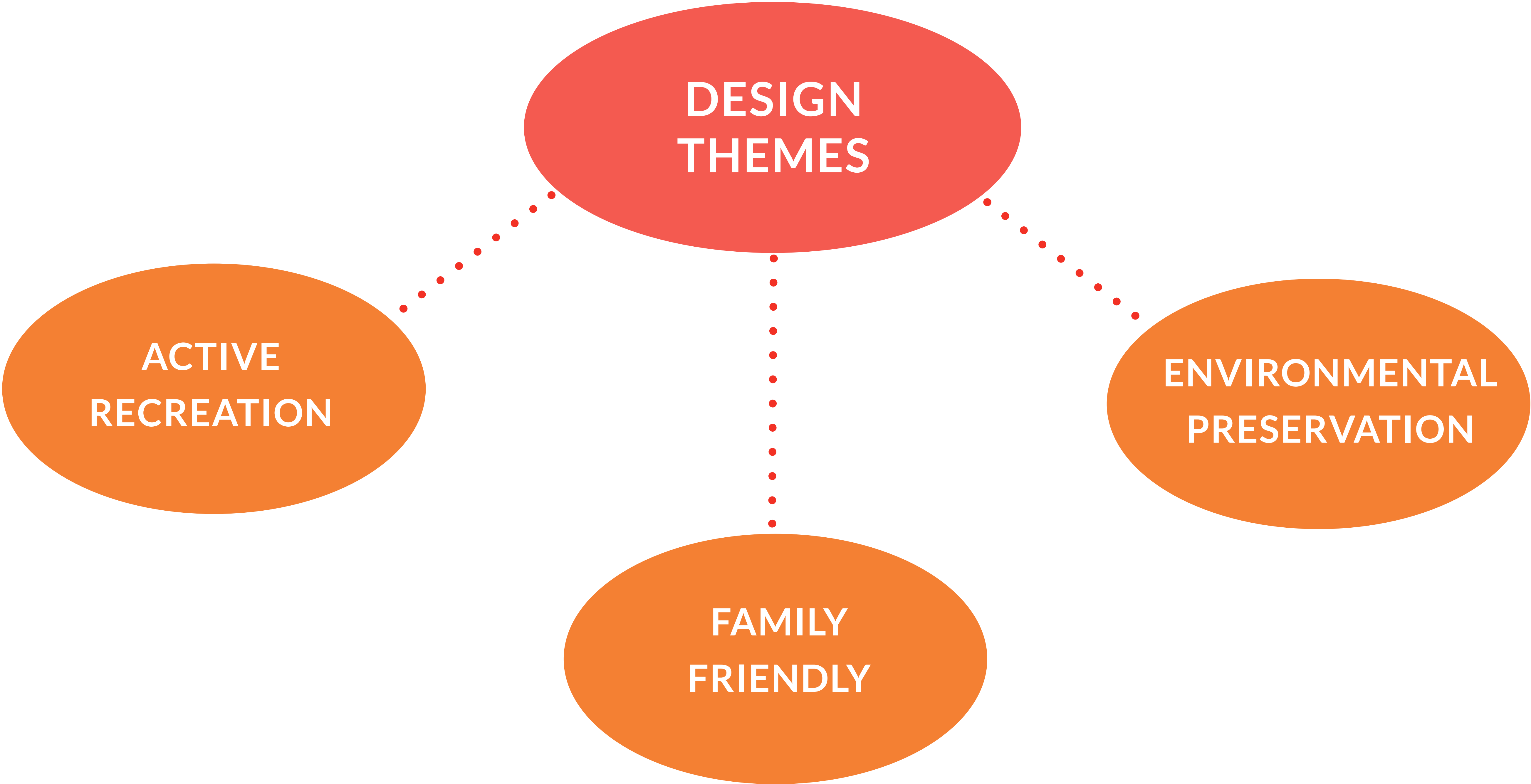




CHARLES COUNTY RECREATION, PARKS & TOURISM PARK MASTER PLANNING - PUBLIC OPEN HOUSE



WALDORF PARK - DESIGN THEMES



WALDORF PARK -TASK FORCE IDEAS

- HUB FOR ORGANIZED SPORTS AND SUPPORTING USES
- FAMILY ORIENTED INCLUDING RECREATION OPTIONS FOR VISITORS NOT PARTICIPATING IN SPORTS
- PASSIVE RECREATION THAT COMPLEMENT NATURAL RESOURCES



**CHARLES COUNTY RECREATION, PARKS & TOURISM
PARK MASTER PLANNING - PUBLIC OPEN HOUSE**



WALDORF PARK - PRECEDENT IMAGES



WAYPOINT SIGNAGE / ART WORK



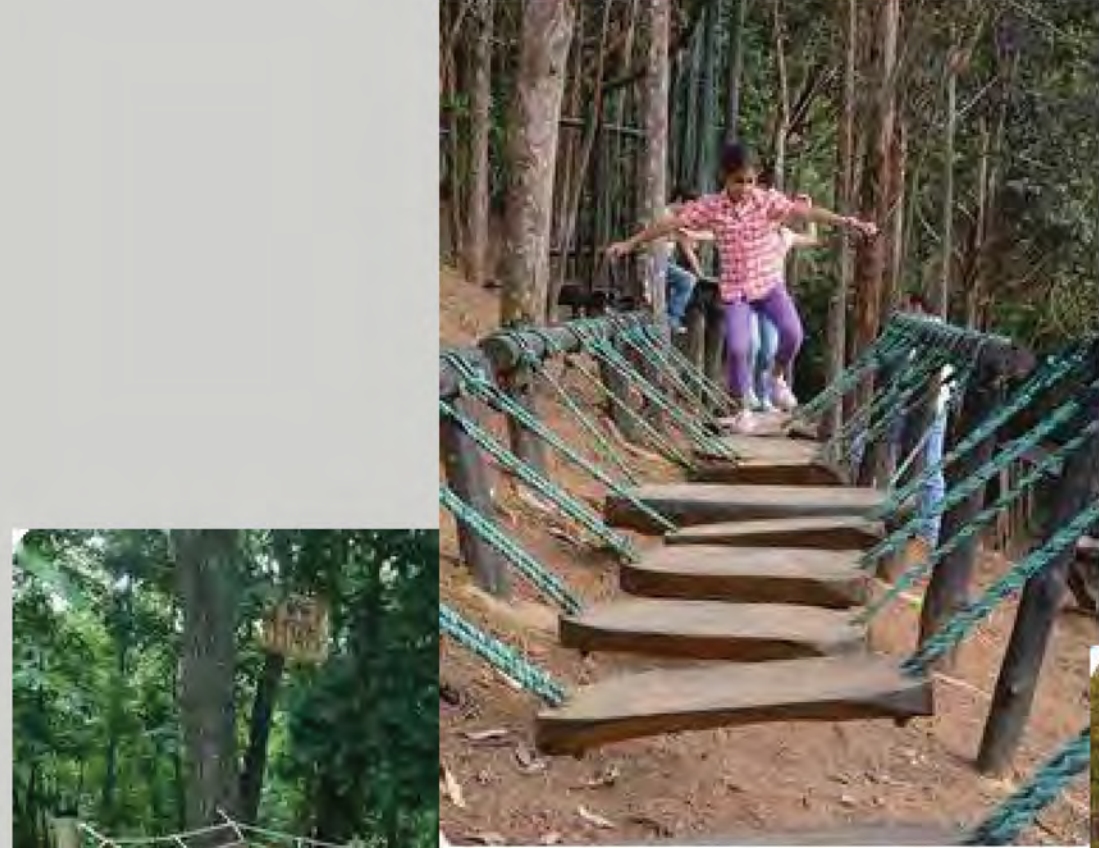
FULL COURT BASKETBALL



FOOD TRUCK AREAS

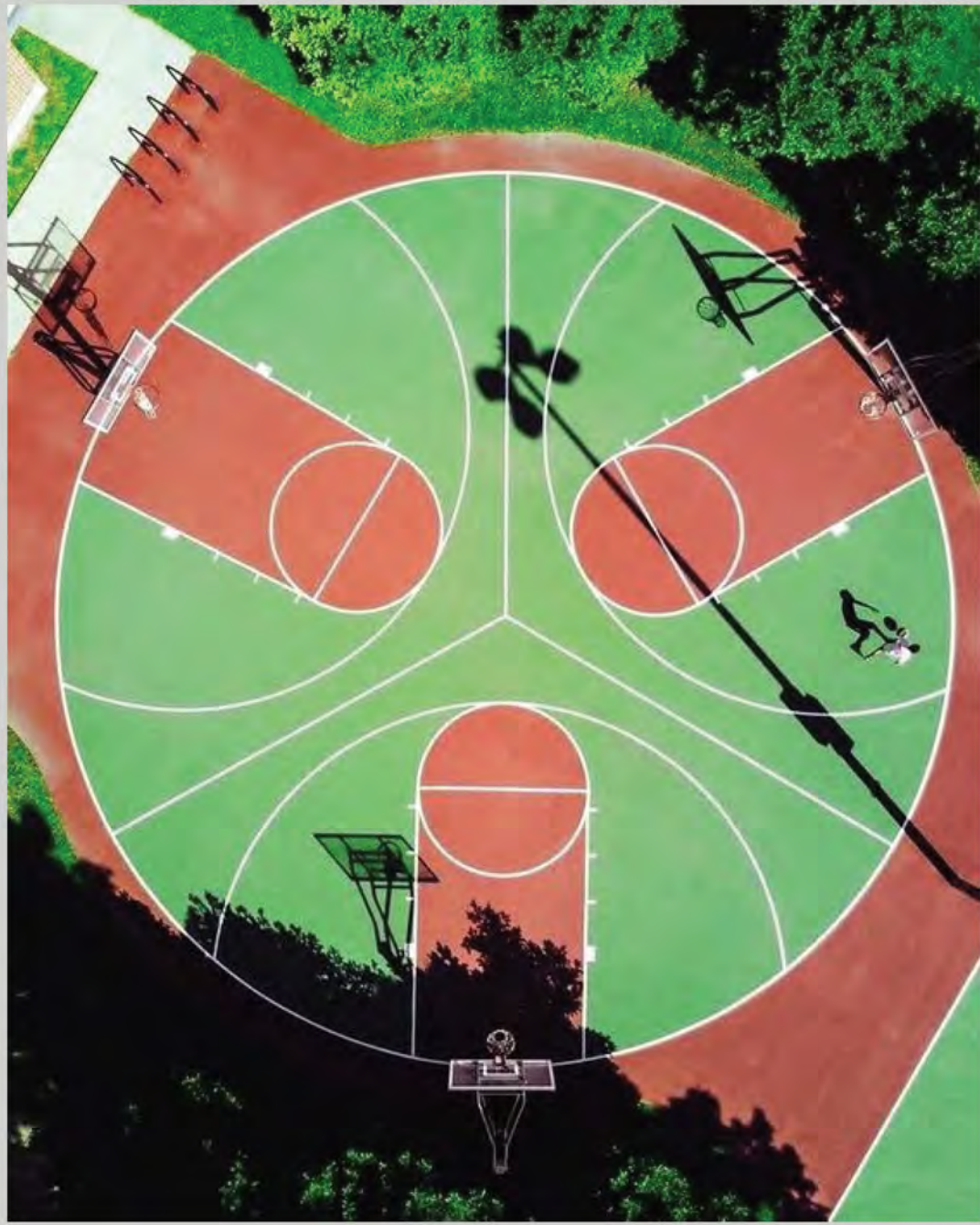


PICKLE BALL COMPLEX

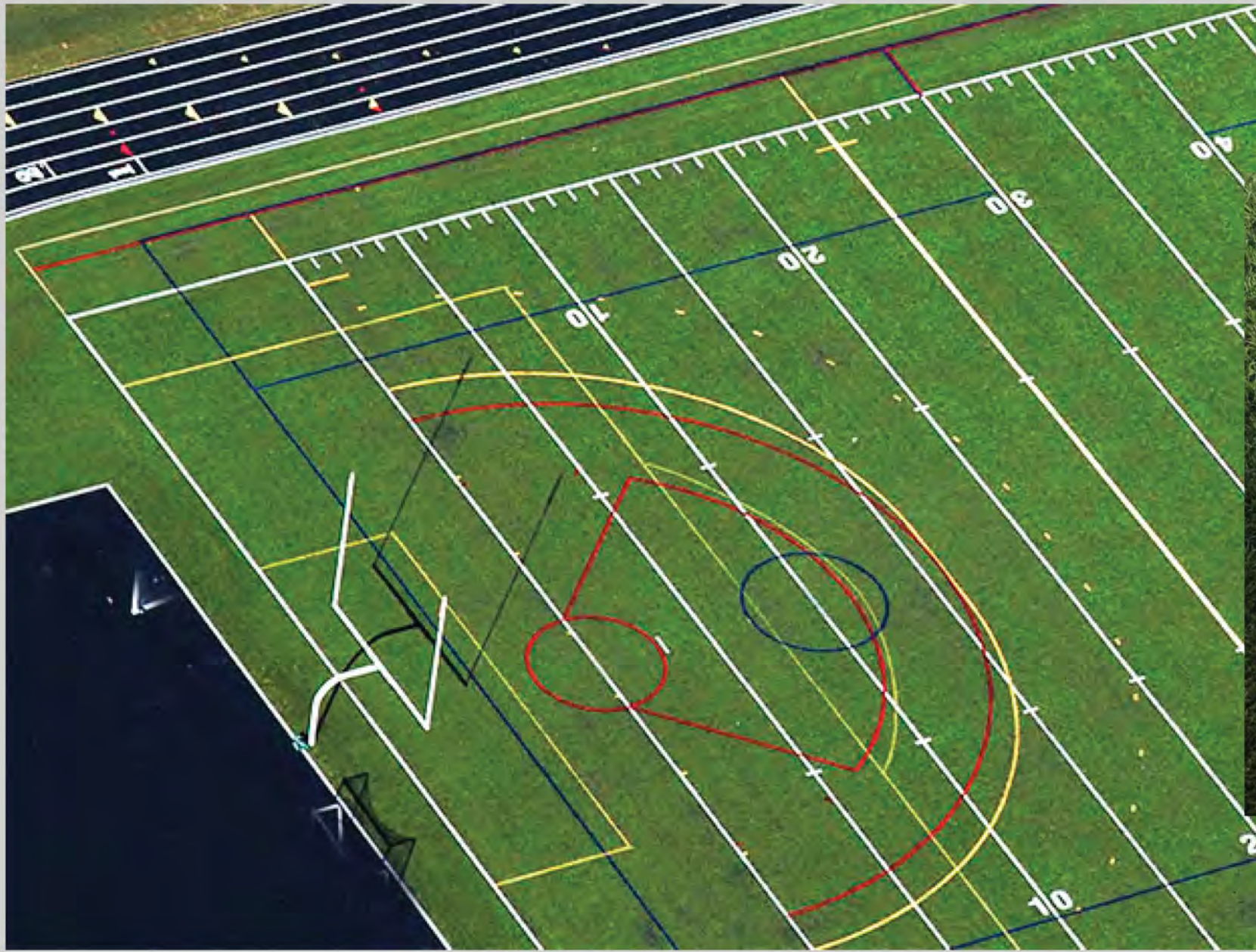


PLAYGROUND AREAS

WALDORF PARK - PRECEDENT IMAGES



3v3 BASKETBALL COURTS



MULTI-USE FIELDS



CHILDREN'S HALF COURT BASKETBALL

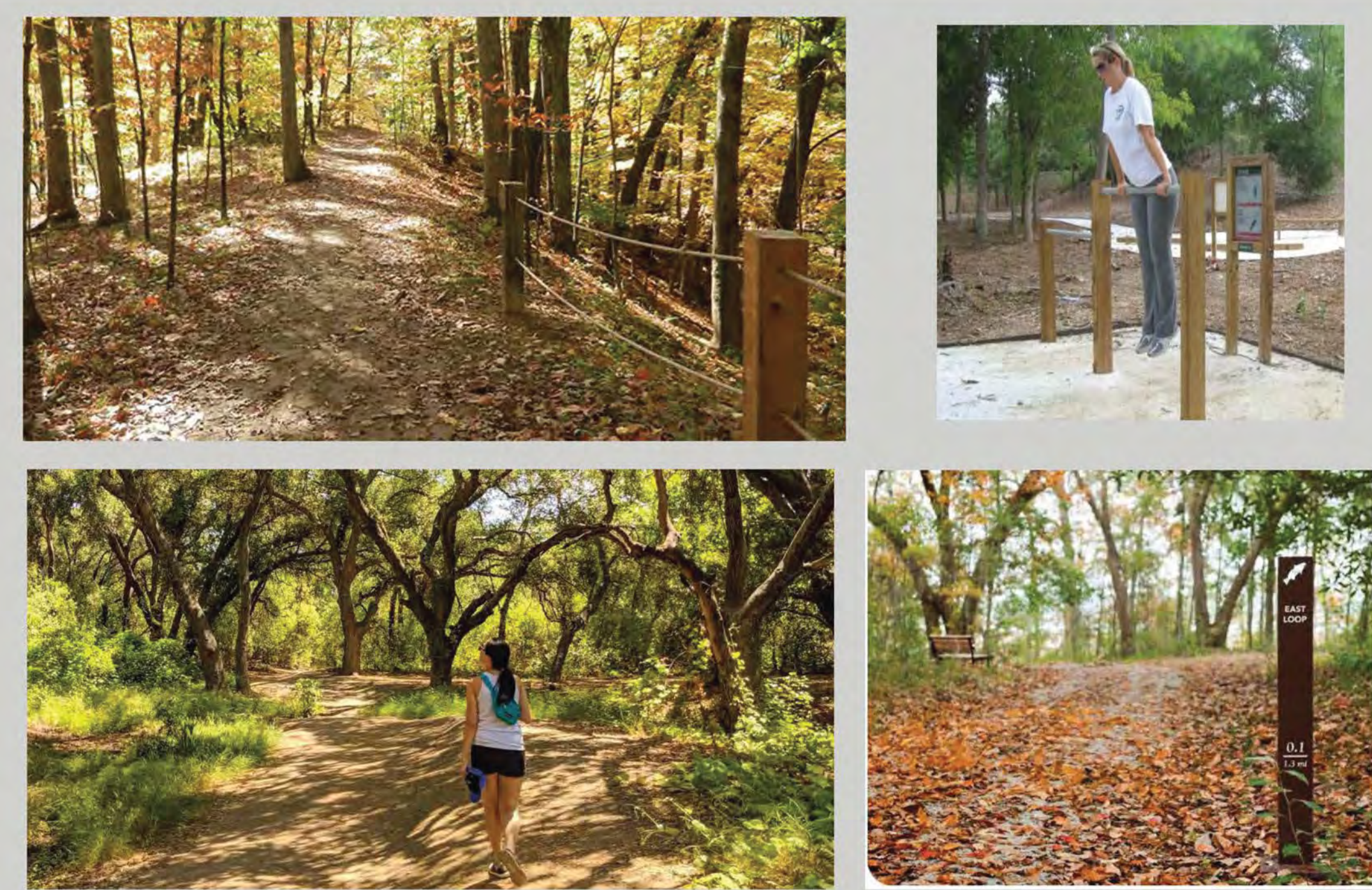


ADULT NINJA / OBSTACLE COURSE



PEDESTRIAN BRIDGE CROSSINGS

WALDORF PARK - PRECEDENT IMAGES



WALKING/HIKING WITH POSSIBLE EXERCISE STATIONS



PAVILLIONS / SHADE STRUCTURES



SMALL, LARGE AND ALL BREED DOG PARKS



RESTROOM FACILITIES

WALDORF PARK - CONCEPT PLAN



KEY ELEMENTS

- | | | | | |
|---------------------------------------|---|---|---|---|
| 1 WAYPOINT SIGNAGE / ART WORK | 6 CHILDREN'S HALF COURT BASKETBALL | 11 LARGE DOG PARK | 16 WALKING / HIKING TRAILS WITH POSSIBLE EXERCISE STATIONS | 21 RECREATIONAL BUILDING ±34,000 SF <ul style="list-style-type: none">• STRIPED FOR (2) TENNIS COURTS, (2) BASKETBALL COURTS, OR (8) PICKLE BALL COURTS• BATH / LOCKER ROOM FACILITIES• OFFICE SPACE• STORAGE AREAS |
| 2 FULL COURT BASKETBALL COURTS | 7 3v3 BASKETBALL COURTS | 12 WOODED CHILD'S IMAGINATION PLAYGROUND | 17 EXISTING REGULATED WETLAND AREAS | |
| 3 FOOD TRUCK AREAS | 8 MAINTENANCE BUILDING | 13 SMALL DOG PARK | 18 RESTROOM FACILITIES | |
| 4 PICKLE BALL COURTS | 9 MULTI-USE FIELDS | 14 ADULT NINJA / OBSTACLE COURSE | 19 PAVILLION / SHADE STRUCTURES | |
| 5 PLAYGROUND | 10 PLAYGROUND WITH ADA ACCESSIBILITY | 15 ALL BREEDS DOG PARK | 20 PEDESTRIAN BRIDGE CROSSINGS | |



WALDORF PARK - ENLARGEMENT 'A'



KEY ELEMENTS

- 1** WAYPOINT SIGNAGE / ART WORK
- 2** FULL COURT BASKETBALL COURTS
- 3** FOOD TRUCK AREAS
- 4** PICKLE BALL COURTS
- 5** PLAYGROUND
- 6** CHILDREN'S HALF COURT BASKETBALL
- 7** 3v3 BASKETBALL COURTS
- 15** ALL BREEDS DOG PARK
- 16** WALKING / HIKING TRAILS WITH POSSIBLE EXERCISE STATIONS
- 17** EXISTING REGULATED WETLAND AREAS
- 19** PAVILLION / SHADE STRUCTURES
- 20** PEDESTRIAN BRIDGE CROSSINGS
- 21** RECREATIONAL BUILDING ±34,000 SF
 - STRIPED FOR (2) TENNIS COURTS, (2) BASKETBALL COURTS, OR (8) PICKLE BALL COURTS
 - BATH / LOCKER ROOM FACILITIES
 - OFFICE SPACE
 - STORAGE AREAS

WALDORF PARK - ENLARGEMENT 'B'

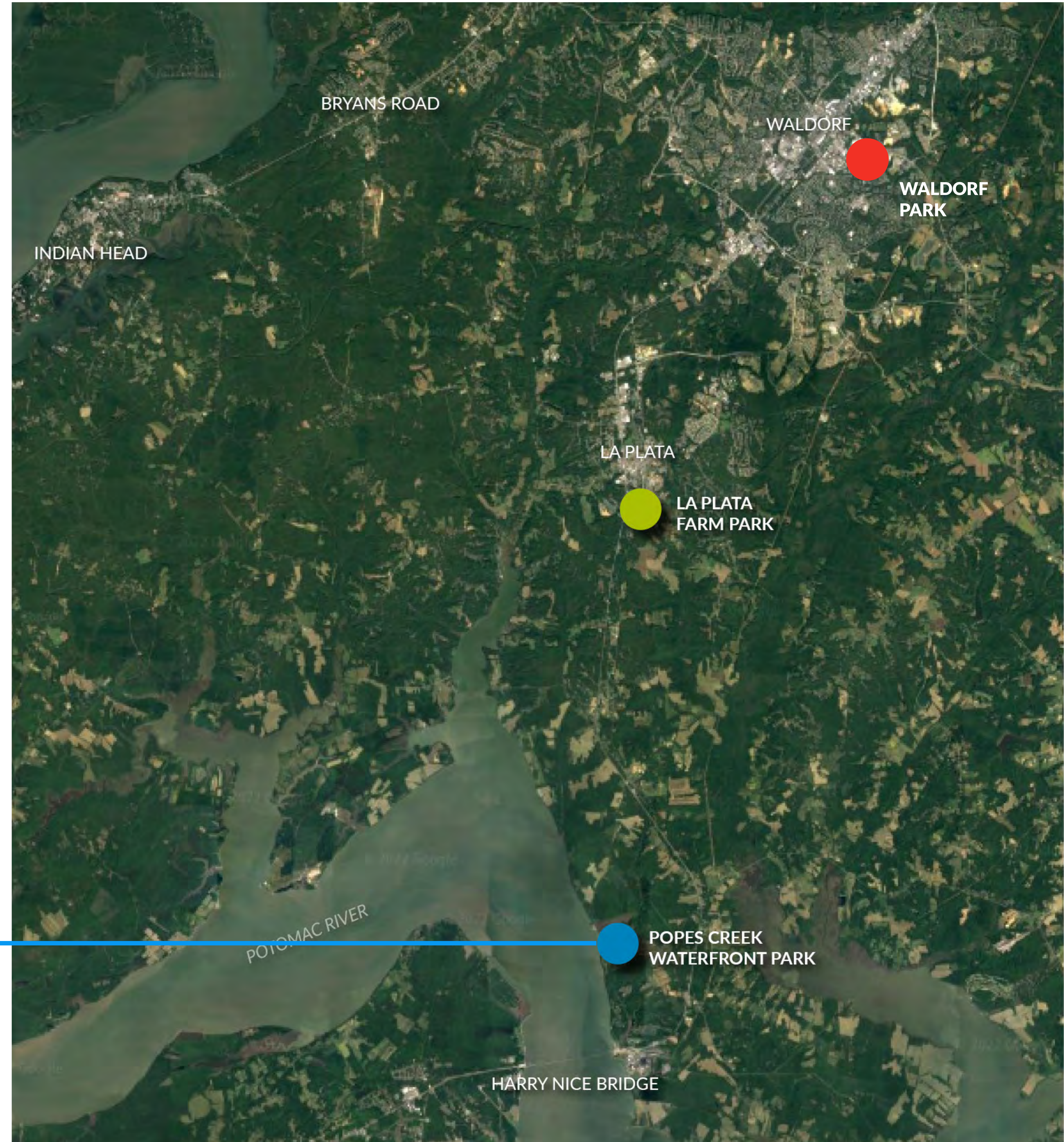


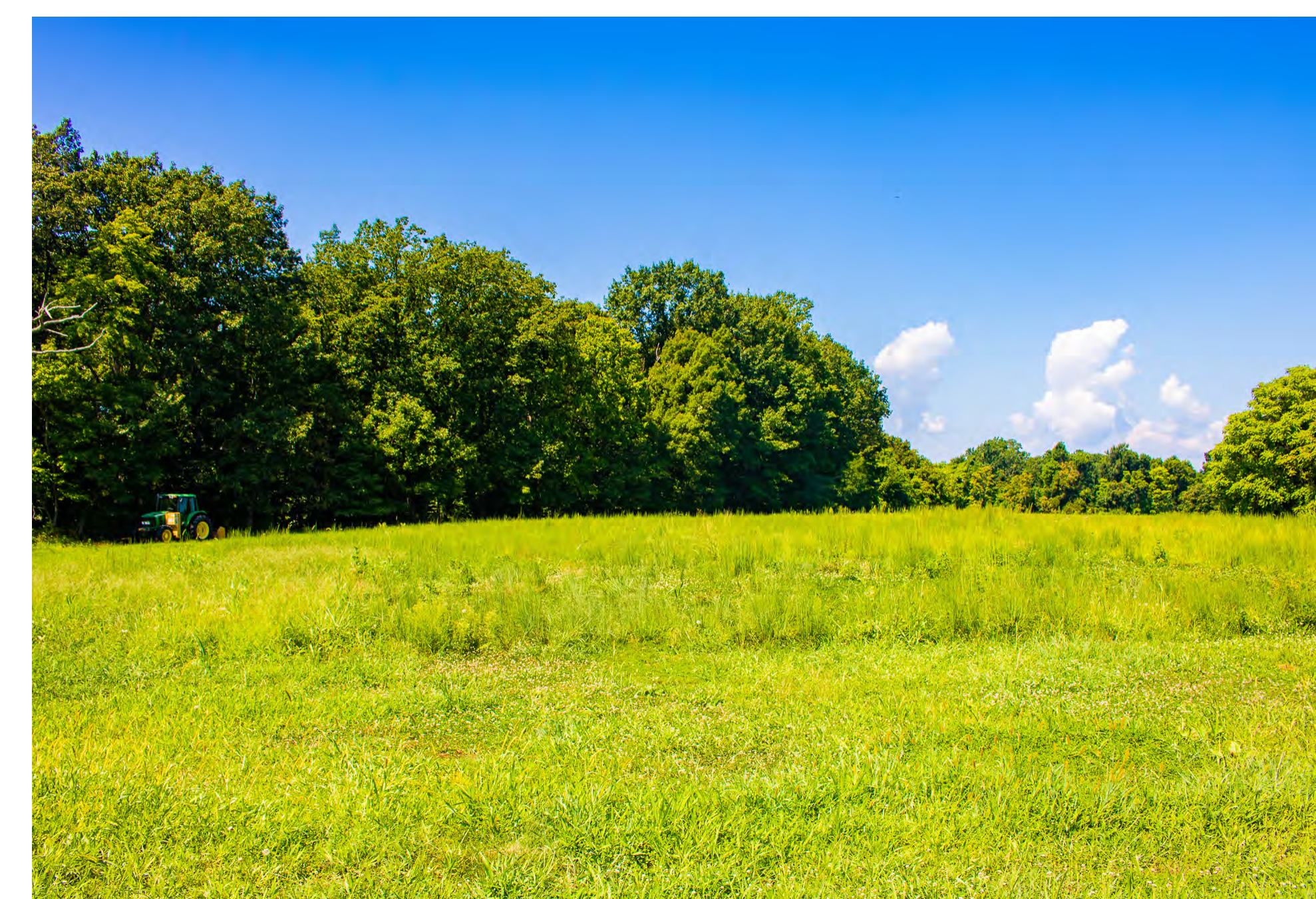
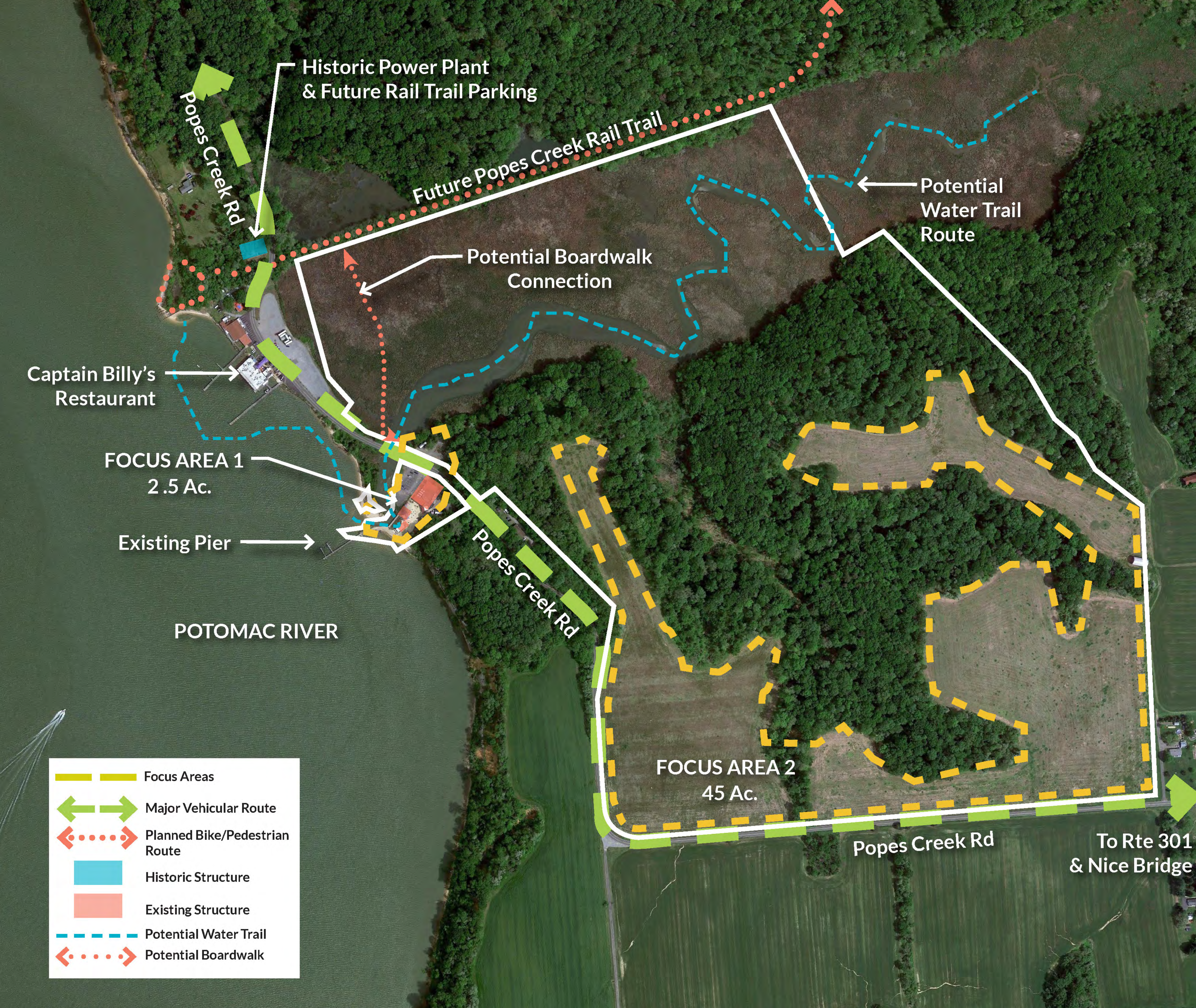
KEY ELEMENTS

- 1** WAYPOINT SIGNAGE / ART WORK
- 3** FOOD TRUCK AREAS
- 5** PLAYGROUND
- 9** MULTI-USE FIELDS
- 11** LARGE DOG PARK
- 12** WOODED CHILD'S IMAGINATION PLAYGROUND
- 13** SMALL DOG PARK
- 14** ADULT NINJA / OBSTACLE COURSE
- 16** WALKING / HIKING TRAILS WITH POSSIBLE EXERCISE STATIONS
- 17** EXISTING REGULATED WETLAND AREAS
- 18** RESTROOM FACILITIES
- 19** PAVILLION / SHADE STRUCTURES



POPES CREEK WATERFRONT PARK





CHARLES COUNTY RECREATION, PARKS & TOURISM PARK MASTER PLANNING - PUBLIC OPEN HOUSE

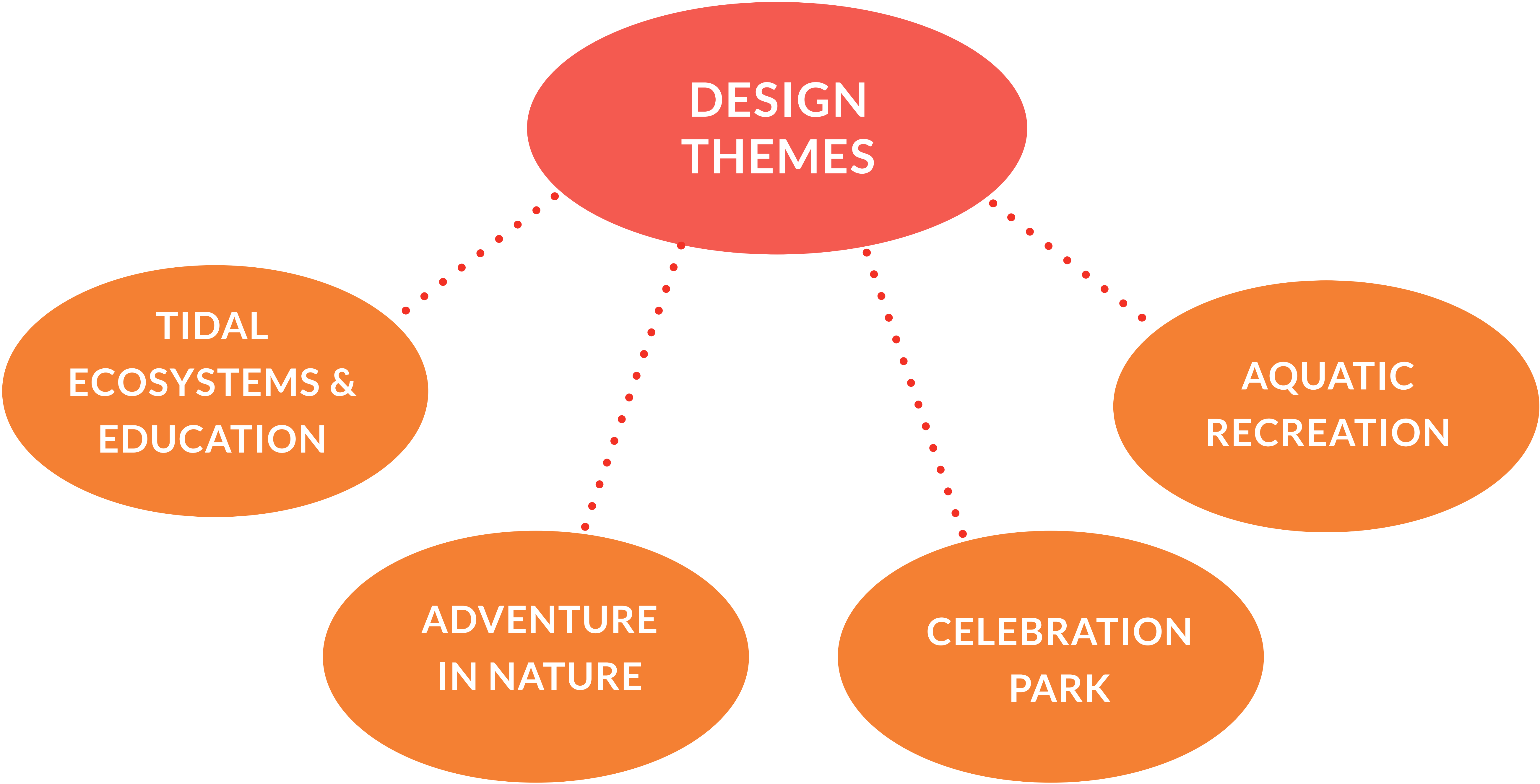




CHARLES COUNTY RECREATION, PARKS & TOURISM PARK MASTER PLANNING - PUBLIC OPEN HOUSE



POPES CREEK WATERFRONT PARK - DESIGN THEMES



POPES CREEK WATERFRONT PARK - TASK FORCE IDEAS

- WATERFRONT SHOULD BE THE GEM OF THE PARK
- PRIMARY FOCUS = ACTIVE WATER BASED RECREATION
- SECONDARY FOCUS = NATURE BASED PLAY & PROGRAMMING



**CHARLES COUNTY RECREATION, PARKS & TOURISM
PARK MASTER PLANNING - PUBLIC OPEN HOUSE**



POPES CREEK WATERFRONT PARK - PRECEDENT IMAGES



ACCESSIBLE FLOATING KAYAK LAUNCH



SHORELINE HABITAT + RESTORATION



PLAZA WITH SEATING



TREE HOUSE + DECK + STAGE



CANOPY WALK



MAXIMIZED BEACH



AMPHITHEATER SEATING

POPES CREEK WATERFRONT PARK - PRECEDENT IMAGES



BOARDWALK TRAIL



BOARDWALK TRAIL WITH RAILING



NATURE TRAIL



WILDERNESS CLASSROOM



OBSERVATION TOWER



DESTINATION PLAYGROUND

POPES CREEK WATERFRONT PARK - PRECEDENT IMAGES



EVENT LAWN + STAGE



SOLAR MEADOW



PRIMITIVE CAMPSITES



CAMPGROUND BATHHOUSE

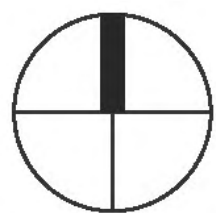


FIRE PIT



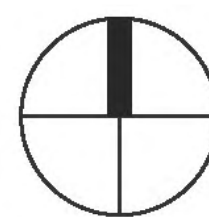
ROPES COURSE

POPES CREEK WATERFRONT PARK - CONCEPT PLAN



NOT TO SCALE

POPES CREEK WATERFRONT PARK - CONCEPT PLAN



NOT TO SCALE

POPES CREEK WATERFRONT PARK - NATURE PLAY



GILLIGAN'S PIER - CONCEPT PLAN



KEY ELEMENTS

- 1 BOARDWALK CONNECTION TO BIKE TRAIL
- 2 RAISED BRIDGE WITH INTERPRETIVE OVERLOOK DECK
- 3 REALIGNED PARKING
- 4 TRAILHEAD AND WETLAND OBSERVATION
- 5 FLOATING KAYAK LAUNCH
- 6 PLAZA WITH SEATING
- 7 DECK AND TREE HOUSE
- 8 CANOPY WALK
- 9 MAXIMIZED BEACH
- 10 PIER RECONSTRUCTION
- 11 SHORELINE HABITAT RESTORATION
- 12 ACCESSIBLE WATER ACCESS
- 13 FISHING PIER

EXISTING -
+/- 35,000 S.F. Impervious Surface

PROPOSED-
+/- 30,000 S.F. Impervious Surface

- Kayak Rental and Stage
- Deck and Bathrooms
- Exhibits
- Overlook and Connection to Canopy Walk
- Elevator

POPES CREEK WATERFRONT PARK - CANOPY WALK



BEACH

“TREE HOUSE”

- Kayak Rental and Stage
- Deck and Bathrooms
- Exhibits
- Overlook and Connection to Canopy Walk
- Elevator

CANOPY WALK

WILDERNESS CLASSROOM



POPES CREEK WATERFRONT PARK - GILLIGAN'S PIER



DISPLAY STATIONS
SMALL GROUP DISCUSSION
Q&A



NEXT STEPS

ASSESS PUBLIC INPUT

- POLLING PREFERENCES
- ONLINE SURVEY

MASTER PLAN REPORT COMPLETE - MAY 2023

- FINAL CONCEPT PLAN
- PHASING PLAN
- COST ESTIMATE

COUNTY TO PRIORITIZE IMPLEMENTATION AND
SECURE FUNDING FOR DESIGN AND CONSTRUCTION

