



# **CHARLES COUNTY RECREATION, PARKS, & TOURISM**

PROJECT PLANNING VOLUNTEER TASK FORCE  
MEETING #2- NOVEMBER 14, 2022





# CHARLES COUNTY, MARYLAND DEPT. OF RECREATION, PARKS, & TOURISM



## DESIGN CONSULTANTS

- LA PLATA FARM PARK
- POPES CREEK WATERFRONT PARK

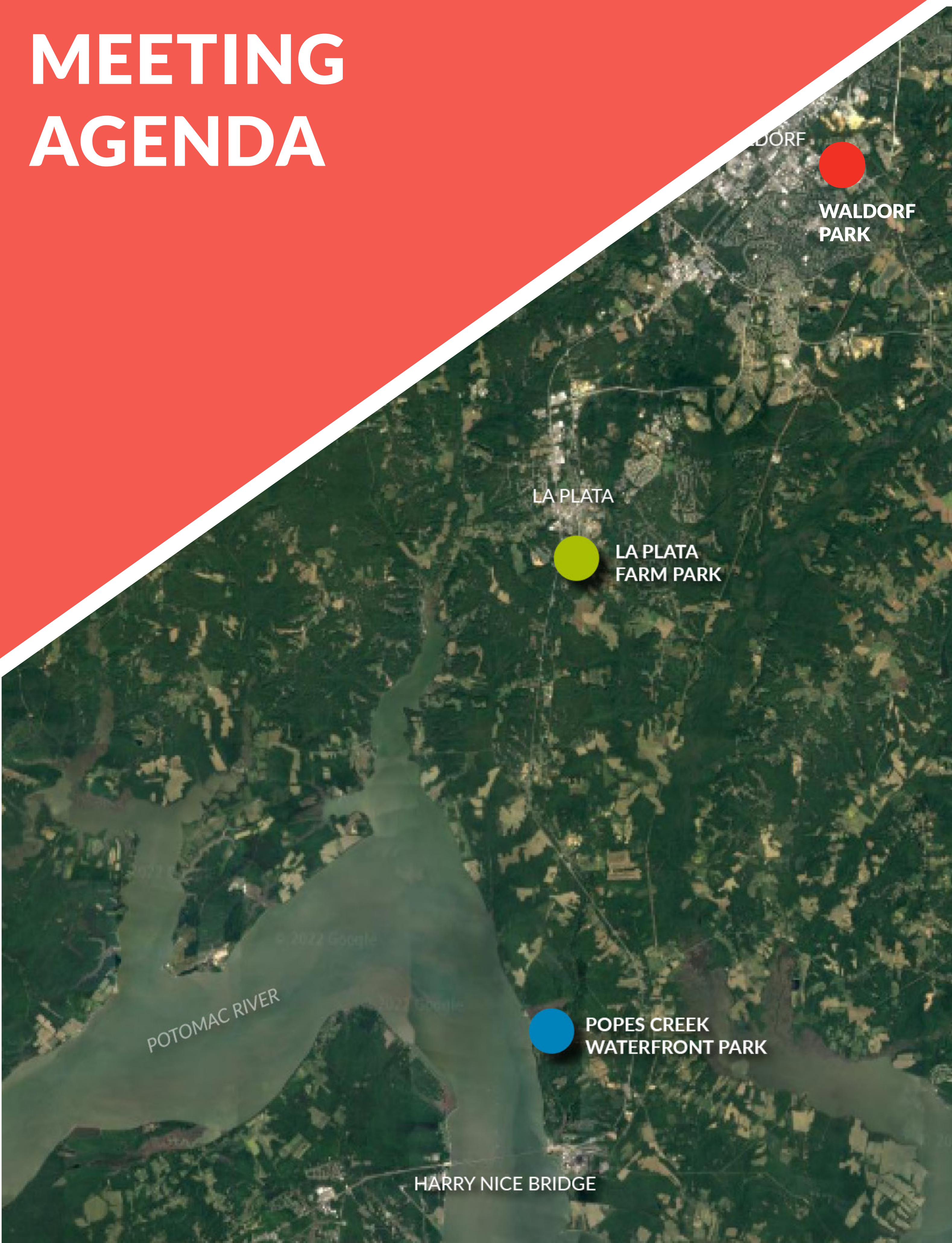


## DESIGN CONSULTANTS

- WALDORF PARK







## ONE

- RECAP IDEAS GENERATED BY THE TASK FORCE
- ASSESS COMMON THREADS IN IDEAS DISCUSSED

## TWO

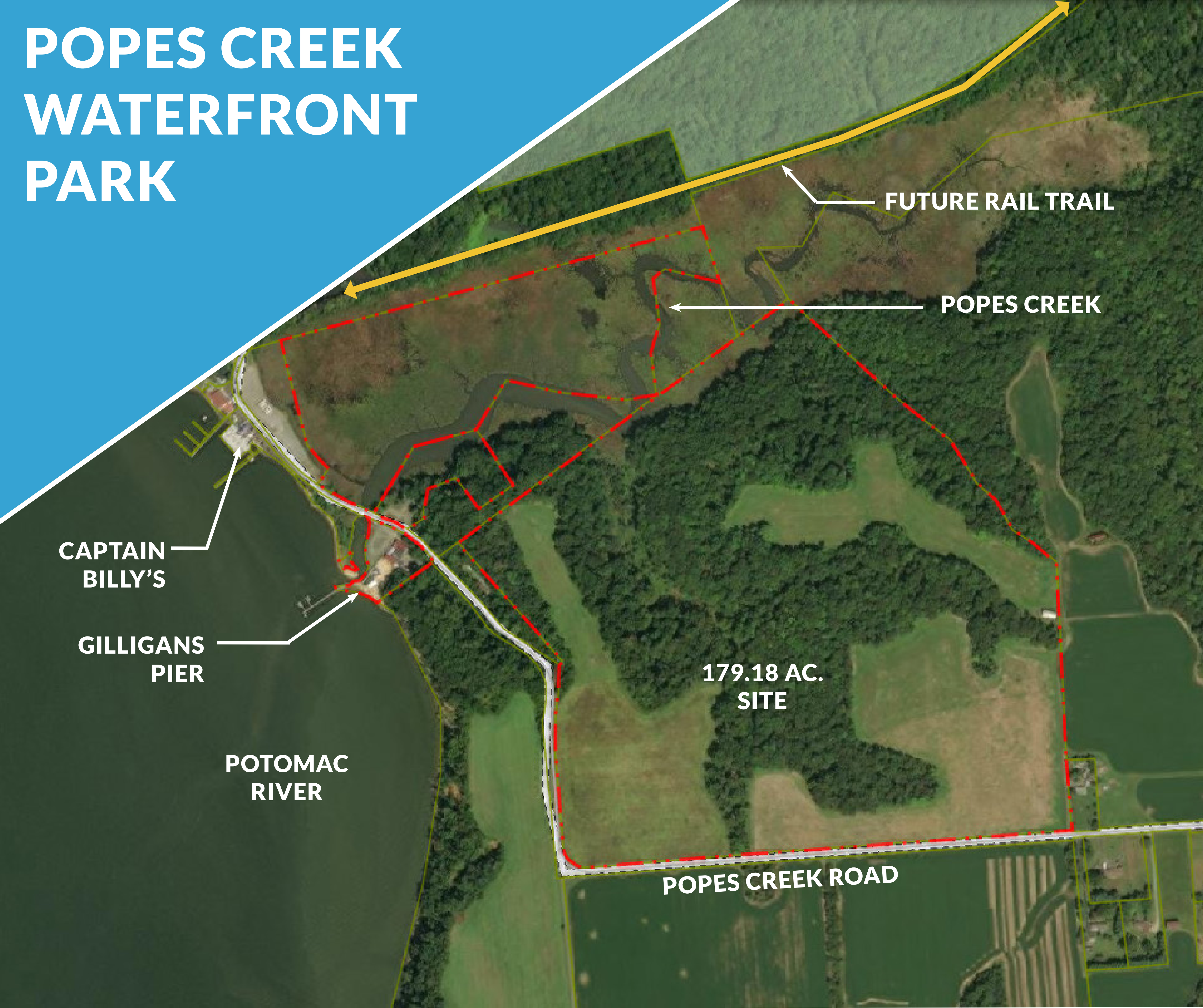
- DEFINE GUIDING PRINCIPLES FOR EACH PARK
- REVIEW CONCEPT PLANS FOR EACH PARK

## THREE

- TASK FORCE ACTIVITY



# POPES CREEK WATERFRONT PARK





# TASK FORCE IDEAS

## ACTIVE

- Beach/ Water access with other options nearby. Basketball Court, Volleyball, etc.
- Fishing Pier or promenade. Ensure visitors can't be stranded.
- Waterfront promenade or boardwalk pathways
- Slide and Diving Board
- Beach chair and umbrella rentals
- Beach area for swimming and docking for boats
- Splashpad and waterplay area
- Rafting or kayaking; kayak rentals
- Concert Stage or celebration stage
- Bathrooms and concessions
- ADA and Senior accessible spaces and equipment
- Universal design. Access and amenities for all ages and abilities. Handicap and low mobility access. Signage in multiple languages.
- Community table, lost and found, toys, garden/flowers
- Active play at forested area. Playground, nature interpretation (audio, visual)
- Nature play with ground level ropes course
- Treetop walk, zipline.
- Basketball hoops/court, bike racks, swing sets

## PASSIVE

- Hiking Trail to link both areas.
- Natural walking trails like Port Tobacco
- Signs with nature education
- Boardwalk, high up like the walk at Indian Head
- Art Installations
- Sunflowers and native plant fields
- Camping Area.
- Treehouse or wooden castle

## PROGRAMMING

- Nature Center like Clearwater at Cosca
- Events at the park to draw people in. Buddy walk?
- Location for fireworks
- Wildlife professionals at events
- Nature classes with CCPS, re: env. science
- Wellbeing with equestrian trainers



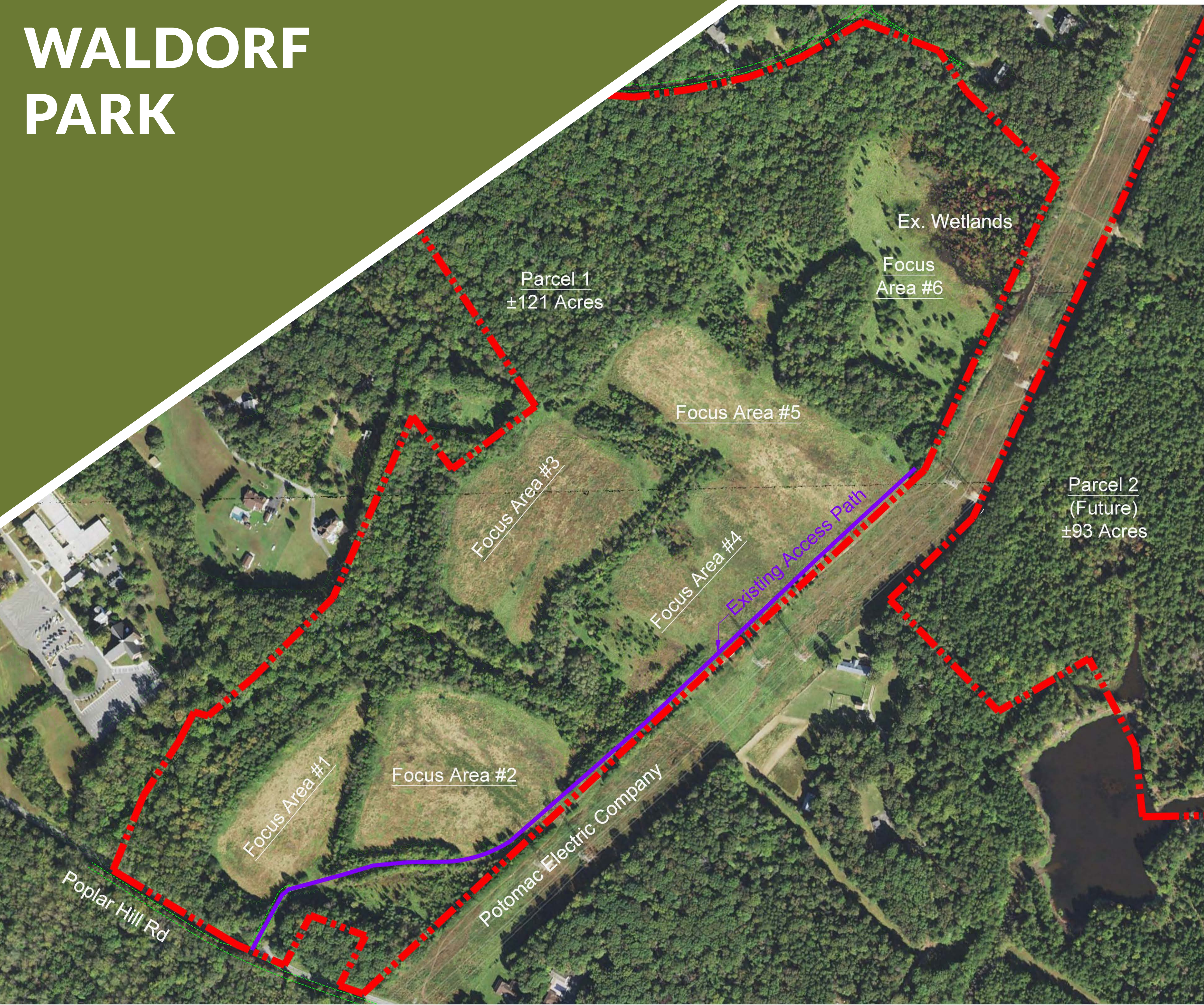
# COMMON THREADS

- WATERFRONT SHOULD BE THE GEM OF THE PARK
- PRIMARY FOCUS = ACTIVE WATER BASED RECREATION
- SECONDARY FOCUS = NATURE BASED PLAY & PROGRAMMING





# WALDORF PARK



**CHARLES COUNTY RECREATION, PARKS & TOURISM  
PROJECT PLANNING VOLUNTEER TASK FORCE - MEETING #2**





# TASK FORCE IDEAS

## ACTIVE

- Indoor sport bubble for tennis and more
- Cloverleaf softball field with R/R building in middle
- Canopy shade for field; field misters
- Multi-use sports turf fields and outdoor track
- Ample parking with lighting
- Pavilions; community tables for sports teams
- Aquatics
- Playgrounds; age leveled playgrounds
- Lights throughout park, esp. in sports fields and basketball courts
- Reference of Howard County Troy Park
- Food truck parking
- Concession and bathroom
- Disc golf
- Pickleball and tennis court
- Splash pad or water park like Cove Point or Our Special Harbor
- Mini golf
- Involve the local carousel committee
- Bike and skateboard park, BMX park
- Zipline in tree area towards wetlands, ropes course
- Ninja Warrior course like Blandair Regional Park Columbia

## PASSIVE

- Hiking trails
- Nature trail and interpretive signs
- Bird watchingpPlatform
- Family picnic area
- Pavilions for picnics and events
- Picnic table with built in highchair, see Walkers Mill Park
- Low impact senior friendly park activities
- Health and wellness open grass area
- Bike trail around park
- Walking/hiking trail
- Community garden

## PROGRAMMING

- Agricultural history center
- Classroom field trips for environmental education
- Events and family friendly festivals like kite flying
- Educational trails with storyboards along stream
- Nature activity center



# COMMON THREADS

- HUB FOR ORGANIZED SPORTS AND SUPPORTING USES
- FAMILY ORIENTED INCLUDING RECREATION OPTIONS FOR VISITORS NOT PARTICIPATING IN SPORTS
- PASSIVE RECREATION THAT COMPLEMENT NATURAL RESOURCES



**CHARLES COUNTY RECREATION, PARKS & TOURISM  
PROJECT PLANNING VOLUNTEER TASK FORCE - MEETING #2**





# LA PLATA FARM PARK



**CHARLES COUNTY RECREATION, PARKS & TOURISM  
PROJECT PLANNING VOLUNTEER TASK FORCE - MEETING #2**





# TASK FORCE IDEAS

## ACTIVE

- 5k / 10k walking and running trails
- Activities and facilities for all seasons
- Tractor and imaginative play elements
- Petting zoo
- Working barn / farm display
- Year-round soccer field
- Community garden
- Farm themed splash pad
- Rock climbing walls
- Zip lines or bike course like Horse Pen Park in PG County
- Ropes Course
- Disc Golf
- Natural Playground or tire playground
- Treehouse or wooden castle
- Tandem swings for parent/child
- Outdoor skating rink
- Dog park
- Parking
- Bathrooms

## PASSIVE

- Open grass / picnic area
- Picnic table with baby seats
- Connection to adjacent Wills Memorial Park
- Looping pathways and running trail
- Art installations of local artists, sculpture etc.
- Elevated boardwalk
- Feature bridge over the ravine
- More passive than active, quiet for neighborhood
- Sunflower or vegetable/fruit fields
- Shade
- Note existing animals, birds, and habitat on site; observed foxes and snapping turtles in the park area.

## PROGRAMMING

- Greenhouse with farming and gardening learning opportunities
- Therapeutic gardens
- Community garden and classes
- Focal areas for 4H and boy/girl scouts
- Open Air Theater – see Tilghman Lake for example
- Open amphitheater for concerts
- Music garden like Wiek Park in Leonardtown
- Activities at night – bikes, hayrides, bonfires, movie night
- Rental event venues or facilities
- New site for the farmers' market



# COMMON THREADS

- A BALANCE OF ACTIVE & PASSIVE RECREATION
- EMPHASIS ON PROGRAMMED ACTIVITIES
- INTEGRATE OPTIONS FOR REVENUE GENERATING ACTIVITIES
- SOCIAL CONNECTIONS WITH GARDENING & FARM BASED ORGANIZATIONS
- PHYSICAL CONNECTIONS TO WILLS MEMORIAL PARK







# CONCEPT PLANS

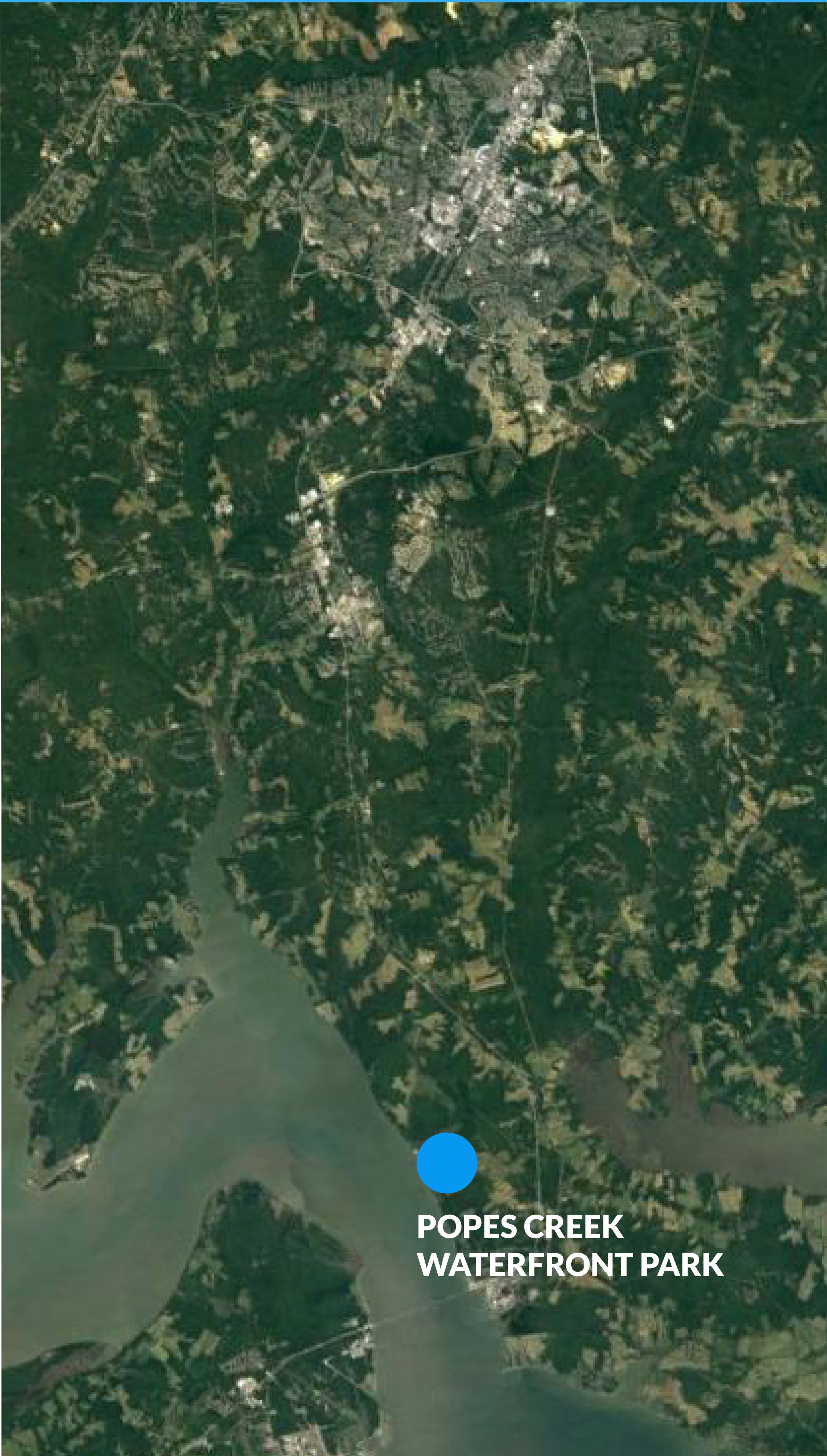


**CHARLES COUNTY RECREATION, PARKS & TOURISM  
PROJECT PLANNING VOLUNTEER TASK FORCE - MEETING #2**





# POPES CREEK WATERFRONT PARK - GUIDING PRINCIPLES



1. MAXIMIZE THE WATERFRONT FOR AQUATIC RECREATION ACTIVITIES, AND VIEWS.
2. CONSIDER PARK FEATURES AS A LIVING CLASSROOM FOR ECOSYSTEM EDUCATION AND NATURE IMMERSION.
3. PLAN FOR PROGRAMS AND EVENTS THAT DEFINE THIS PARK AS A DESTINATION AND PROMOTE TOURISM.
4. CONNECT TO, RATHER THAN DUPLICATE, SURROUNDING ATTRACTIONS.
5. PRESERVE AND ENHANCE NATURAL ECOSYSTEMS; PLAN FOR RESILIENCY AND A PARK THAT CAN ADAPT TO POTENTIAL IMPACTS CAUSED BY A CHANGING CLIMATE.



# POPES CREEK WATERFRONT PARK - CONCEPT PLAN



## KEY ELEMENTS

- 1 BOARDWALK CONNECTION TO BIKE TRAIL
- 2 SWITCHBACK TRAIL
- 3 WILDERNESS CLASSROOM
- 4 NATURE CENTER, OUTDOOR CLASSROOM, AND BATHROOMS
- 5 DESTINATION PLAYGROUND WITH OBSERVATION TOWER
- 6 STAGE
- 7 PARKING
- 8 SHUTTLE STOP
- 9 SOLAR MEADOW
- 10 VEHICLE AND ON-FOOT CAMPSITES
- 11 BATHROOMS AND FIRE PIT
- 12 ROPES COURSE





# ACCESS & CIRCULATION



## CIRCULATION

PEDESTRIAN TRAIL

PEDESTRIAN BOARDWALK

VEHICULAR ACCESS

PARKING  
297 TOTAL SPACES

NOT TO SCALE



# POPES CREEK WATERFRONT PARK - PRECEDENT IMAGES



BOARDWALK TRAIL



BOARDWALK TRAIL WITH RAILING



SWITCHBACK TRAIL



WILDERNESS CLASSROOM



OBSERVATION TOWER



DESTINATION PLAYGROUND





# POPES CREEK WATERFRONT PARK - PRECEDENT IMAGES



CONCERT STAGE



SOLAR MEADOW



PRIMITIVE CAMPSITES



CAMPGROUND BATHHOUSE



FIRE PIT



ROPES COURSE



# GILLIGAN'S PIER - GILLIGAN'S LOOKOUT

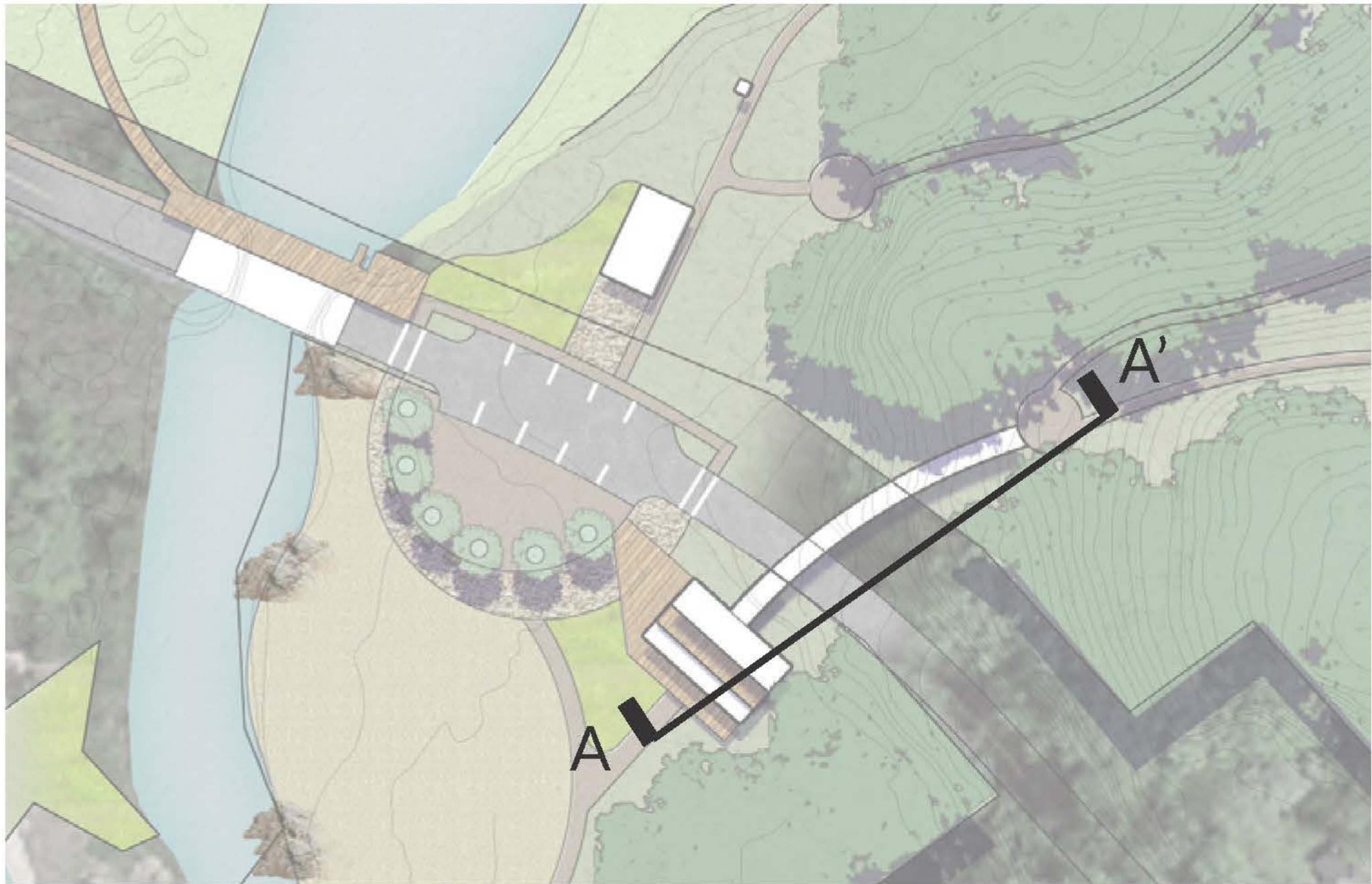


## KEY ELEMENTS

- |    |  |   |
|----|--|---|
| 1  | BOARDWALK<br>CONNECTION TO BIKE<br>TRAIL | EXISTING -<br><br>+/- 35,000 S.F. Impervious Surface  |
| 2  | RAISED BRIDGE WITH<br>KAYAK LAUNCH DECK  | PROPOSED-<br><br>+/- 20,000 S.F. Impervious Surface   |
| 3  | SCREENED PAVILION                        |   |
| 4  | WETLAND OBSERVATION<br>BLINDS            |   |
| 5  | ADA AND SERVICE<br>PARKING AND DROP-OFF  |   |
| 6  | PLAZA WITH SEATING                       |   |
| 7  | DECK AND TREE HOUSE                      | <div>- Kayak Rental and Stage<br/>- Deck and Bathrooms<br/>- Exhibits<br/>- Overlook and Connection<br/>to Canopy Walk<br/>- Elevator</div> |
| 8  | CANOPY WALK                              |   |
| 9  | MAXIMIZED BEACH                          |   |
| 10 | PIER RECONSTRUCTION                      |   |
| 11 | SHORELINE HABITAT<br>RESTORATION         |   |



# TREE HOUSE & CANOPY WALK



A

A'

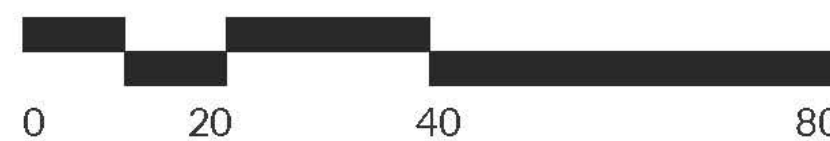
BEACH

"TREE HOUSE"

- Kayak Rental and Stage
- Deck and Bathrooms
- Exhibits
- Overlook and Connection to Canopy Walk
- Elevator

CANOPY WALK

WILDERNESS CLASSROOM





# POPES CREEK WATERFRONT PARK - PRECEDENT IMAGES



ACCESSIBLE FLOATING KAYAK LAUNCH



SCREENED PAVILION



PLAZA WITH SEATING



TREE HOUSE + DECK



CANOPY WALK



MAXIMIZED BEACH



SHORELINE HABITAT + RESTORATION



# GILLIGAN'S PIER - SHORELINE CELEBRATION

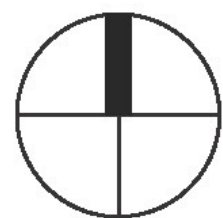


## KEY ELEMENTS

- 1 BOARDWALK CONNECTION TO BIKE TRAIL
- 2 WIDENED BRIDGE WITH PEDESTRIAN TRAIL
- 3 VISITOR'S CENTER WITH DECK AND KAYAK LAUNCH
- 4 ADA AND SERVICE PARKING AND DROP-OFF
- 5 STAGE AND SHADE SAIL
- 6 AMPHITHEATER SEATING
- 7 LIVING SHORELINE WITH RAMP OR STAIR TO WATER
- 8 POPES CREEK ALIGNMENT SHIFTED TO MAXIMIZE USABLE SPACE
- 9 TRAIL CONNECTION TO CLIFF SIDE
- 10 PIER RECONSTRUCTION

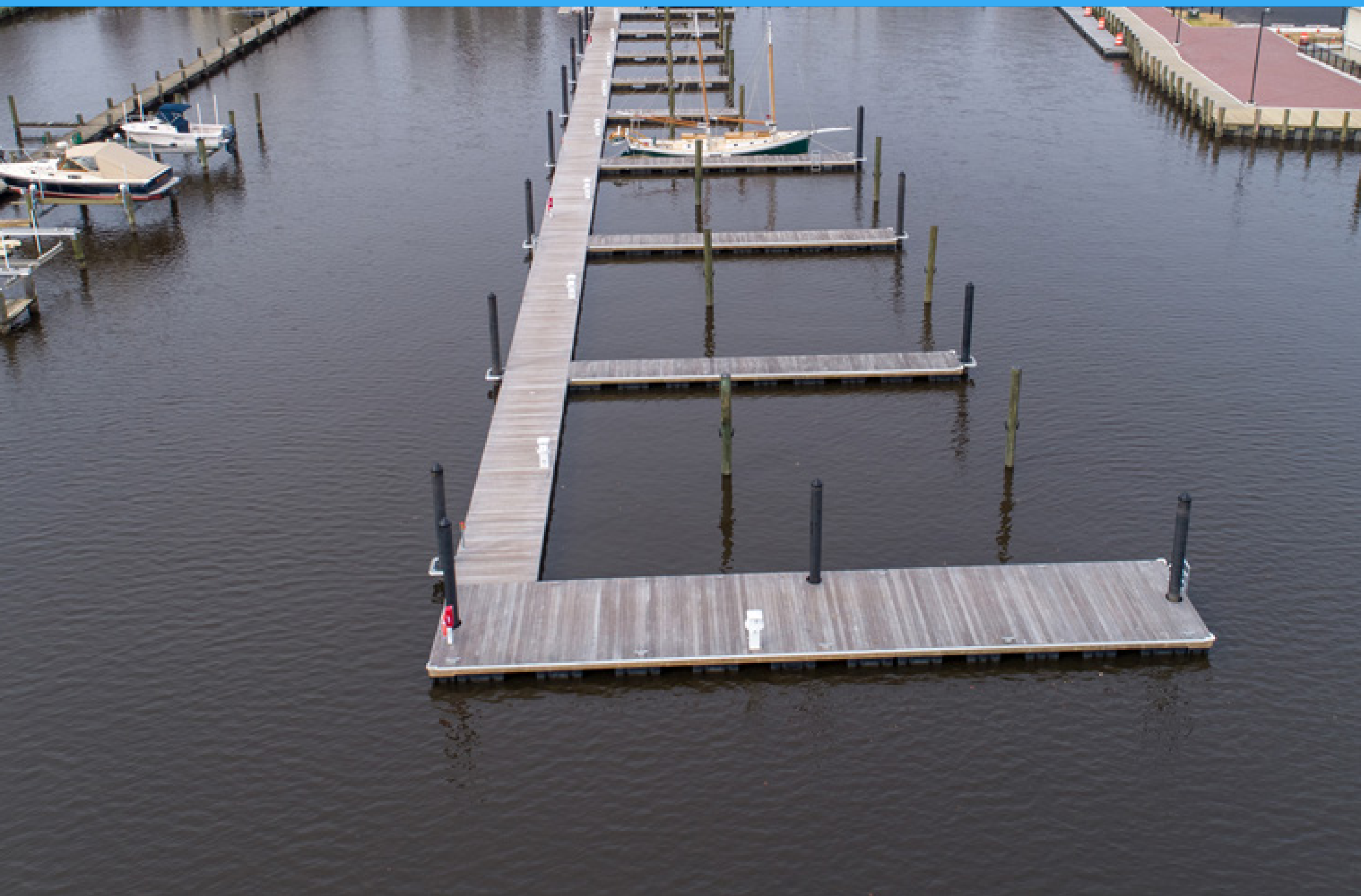
EXISTING -  
+/- 35,000 S.F. Impervious Surface

PROPOSED-  
+/- 15,000 S.F. Impervious Surface





# POPES CREEK WATERFRONT PARK - PRECEDENT IMAGES



RECONSTRUCTED PIER



VISITOR CENTER



STAGE + SHADE SAIL



AMPHITHEATER SEATING



ACCESSIBLE WALK TO BEACH + CLIFFS



LIVING SHORELINE + WATER ACCESS



# WALDORF PARK - GUIDING PRINCIPLES



1. ESTABLISH THE PARK AS A DESTINATION FOR THE ENTIRE FAMILY.
2. MAXIMIZE INTERCONNECTIVITY BETWEEN VARIOUS PARK ELEMENTS. (E.G. - SPORTS FIELDS, PLAYGROUNDS, TRAILS, ETC.)
3. OFFER A WIDE RANGE OF AMENITIES THAT APPEAL TO ALL FAMILY MEMBERS ENCOURAGE CROSS-USE OF AMENITIES BY PATRONS.
4. DISTRIBUTE PLAYGROUND AMENITIES THROUGHOUT THE PARK.
5. PRESERVE AND ENHANCE NATURAL AREAS WHILE PRESENTING OPPORTUNITIES FOR ENVIRONMENTAL EDUCATION AS WELL AS PHYSICAL ACTIVITIES IN A NATURAL SETTING.



# WALDORF PARK CONCEPT PLAN



**KEY ELEMENTS**

- 1** WAYPOINT SIGNAGE / ART WORK
- 2** FULL COURT BASKETBALL COURTS
- 3** FOOD TRUCK AREAS
- 4** PICKLE BALL COURTS
- 5** PLAYGROUND
- 6** CHILDREN'S HALF COURT BASKETBALL
- 7** 3v3 BASKETBALL COURTS
- 8** MAINTENANCE BUILDING
- 9** MULTI-USE FIELDS
- 10** PLAYGROUND WITH ADA ACCESSIBILITY
- 11** LARGE DOG PARK
- 12** PLAYGROUND
- 13** SMALL DOG PARK
- 14** ADULT NINJA COURSE WITH ROCK WALL
- 15** ALL BREEDS DOG PARK
- 16** WALKING / HIKING TRAILS WITH POSSIBLE EXERCISE STATIONS
- 17** EXISTING REGULATED WETLAND AREAS
- 18** RESTROOM FACILITIES
- 19** PAVILLION / SHADE STRUCTURES
- 20** PEDESTRIAN BRIDGE CROSSINGS





# WALDORF PARK - PRECEDENT IMAGES



WAYPOINT SIGNAGE / ART WORK



FULL COURT BASKETBALL



FOOD TRUCK AREAS



PICKLEBALL COMPLEX



PLAYGROUND AREAS



# WALDORF PARK - PRECEDENT IMAGES



3v3 BASKETBALL COURTS



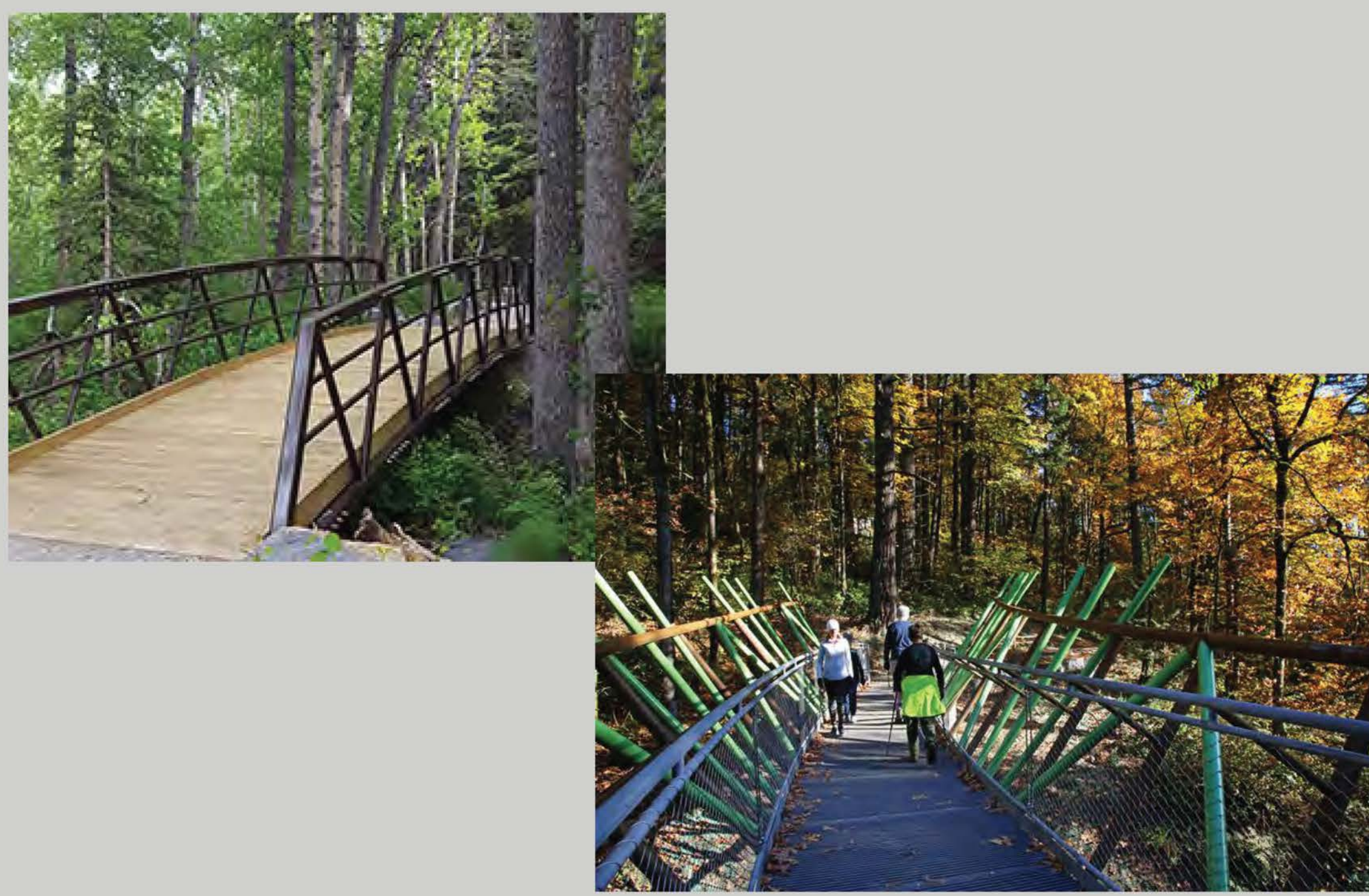
MULTI-USE FIELDS



CHILDREN'S HALF COURT BASKETBALL



ADULT NINJA COURSE

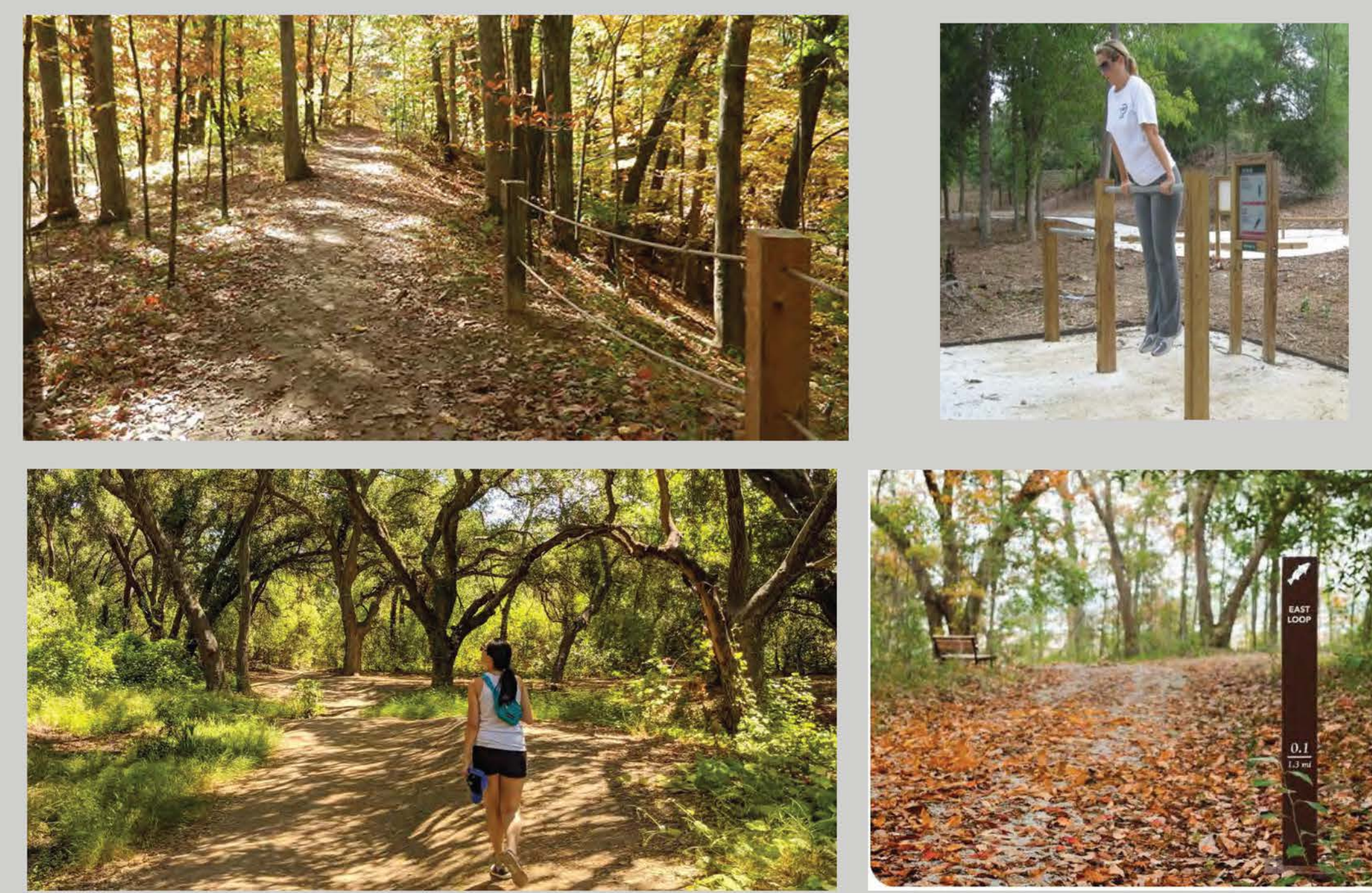


PEDESTRIAN BRIDGE CROSSINGS





# WALDORF PARK - PRECEDENT IMAGES



WALKING/HIKING WITH POSSIBLE EXERCISE STATIONS



PAVILLIONS / SHADE STRUCTURES



SMALL, LARGE AND ALL BREED DOG PARKS



RESTROOM FACILITIES





# LA PLATA FARM PARK - GUIDING PRINCIPLES



1. PLAN FOR PROGRAMMING AND EVENTS TO PROMOTE DISCOVERY OF THE AGRICULTURAL HERITAGE OF CHARLES COUNTY AND SIGNIFICANCE TO EVERYDAY LIFE.
2. PROMOTE COMMUNITY CONNECTIONS, BOTH PHYSICAL AND SOCIAL; CONNECT TO:
  - WILLS MEMORIAL PARK
  - TOWN OF LA PLATA
  - EDUCATION SYSTEM
  - TOURISM
  - GREATER AGRICULTURAL COMMUNITY
3. INTEGRATE A VARIETY OF ACTIVE AND PASSIVE USES FOR YEAR-ROUND USE AND SEASONAL EVENTS.
4. PROVIDE MULTI-FUNCTIONAL PARK FEATURES AS OPPORTUNITIES FOR REVENUE GENERATION.



# LA PLATA FARM PARK CULTIVATING HERITAGE



## KEY ELEMENTS

- 1 SUNFLOWER GARDEN
- 2 DEMONSTRATION GARDENS
- 3 PARKING
- 4 DESTINATION PLAYGROUND
- 5 PICNIC GROVE + CAFE
- 6 EVENT LAWN
- 7 GREENHOUSE + CULINARY GARDEN
- 8 PASTURE
- 9 HISTORIC BARN + EVENT SPACE WITH COMMERCIAL KITCHEN
- 10 ORCHARD
- 11 COMMUNITY TABLE/ EVENT SPACE
- 12 MEADOW
- 13 DOG PARK
- 14 PAVILION
- 15 APIARY

NOT TO SCALE



# ACCESS & CIRCULATION



## CIRCULATION

- PEDESTRIAN TRAIL
- PEDESTRIAN BOARDWALK
- VEHICULAR ACCESS
- PARKING 294 TOTAL SPACES



# LA PLATA FARM PARK - PRECEDENT IMAGES



DEMONSTRATION GARDEN



FARM THEMED DESTINATION PLAYGROUND



PICNIC GROVE + CAFE



EVENT LAWN



ORCHARD



COMMUNITY TABLE





# LA PLATA FARM PARK - PRECEDENT IMAGES



SUNFLOWER FIELDS



RESTORED BARN



GREENHOUSE + CULINARY GARDEN



PAVILION



DOG PARK



MEADOW + APIARY



# LA PLATA FARM PARK - EXPLORATION MEADOWS



## KEY ELEMENTS

- 1 SUNFLOWER GARDEN
- 2 RENOVATED BARN + VISITORS CENTER
- 3 COMMUNITY GARDEN
- 4 LABYRINTH
- 5 GREENHOUSE + CLASSROOM
- 6 PARKING
- 7 HOLIDAY TREE GROVE
- 8 EVENT LAWN
- 9 STAGE
- 10 DESTINATION PLAYGROUND
- 11 FARM-THEMED SPLASH PAD
- 12 MEADOW MOUND
- 13 BIKE PUMP TRACK
- 14 DISC GOLF COURSE
- 15 ROTATING OUTDOOR EXHIBIT
- 16 PAVILION

NOT TO SCALE



# ACCESS & CIRCULATION



## CIRCULATION

- PEDESTRIAN TRAIL
- PEDESTRIAN BOARDWALK
- VEHICULAR ACCESS
- PARKING 153 TOTAL SPACES



# LA PLATA FARM PARK - PRECEDENT IMAGES



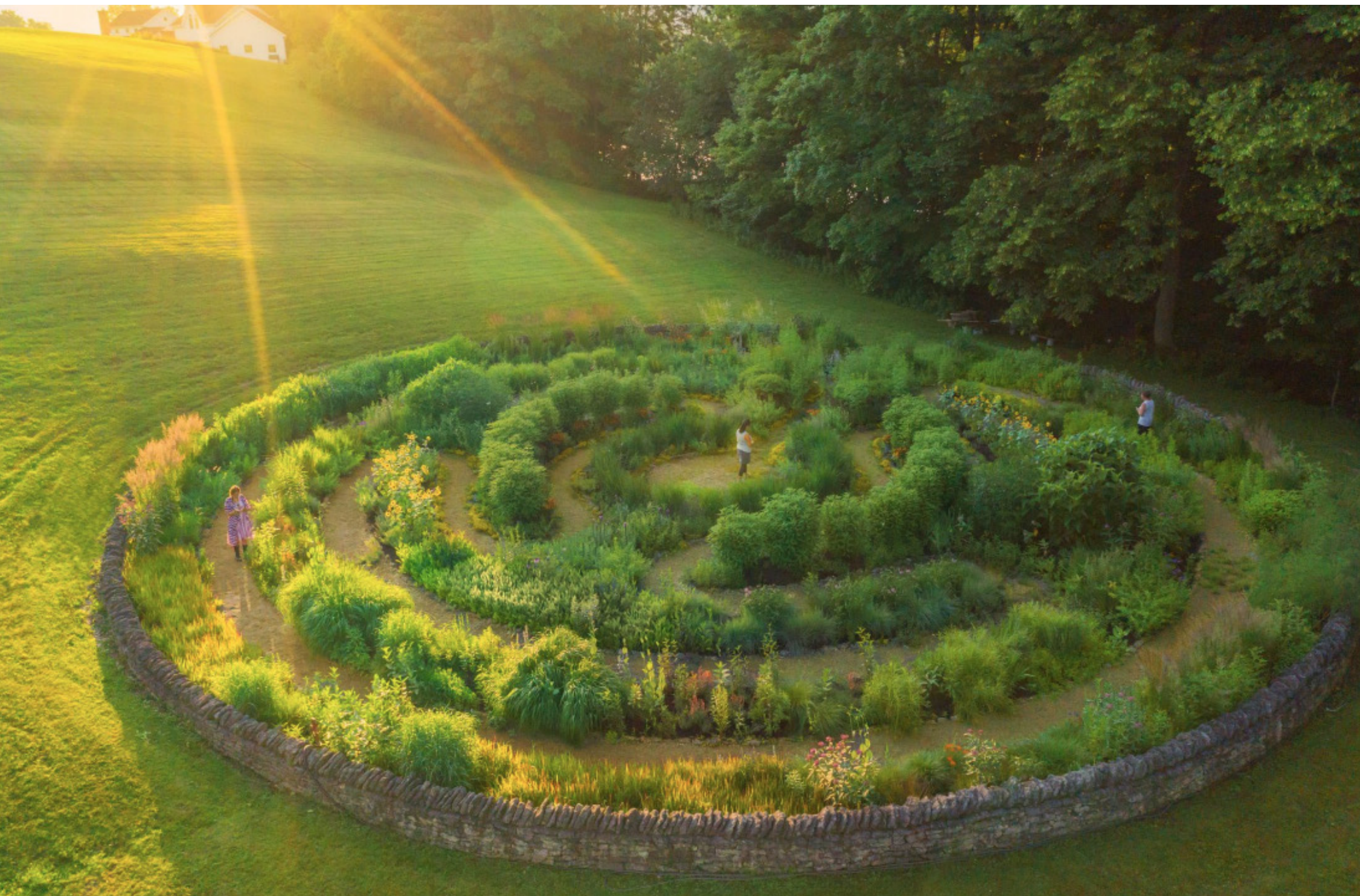
COMMUNITY GARDEN



RAISED GARDEN BEDS



GREENHOUSE + CLASSROOM



LABYRINTH



DESTINATION PLAYGROUND



FARM THEMED SPLASH PAD



# LA PLATA FARM PARK - PRECEDENT IMAGES



RENOVATED BARN + VISITOR CENTER



HOLIDAY TREE WALK



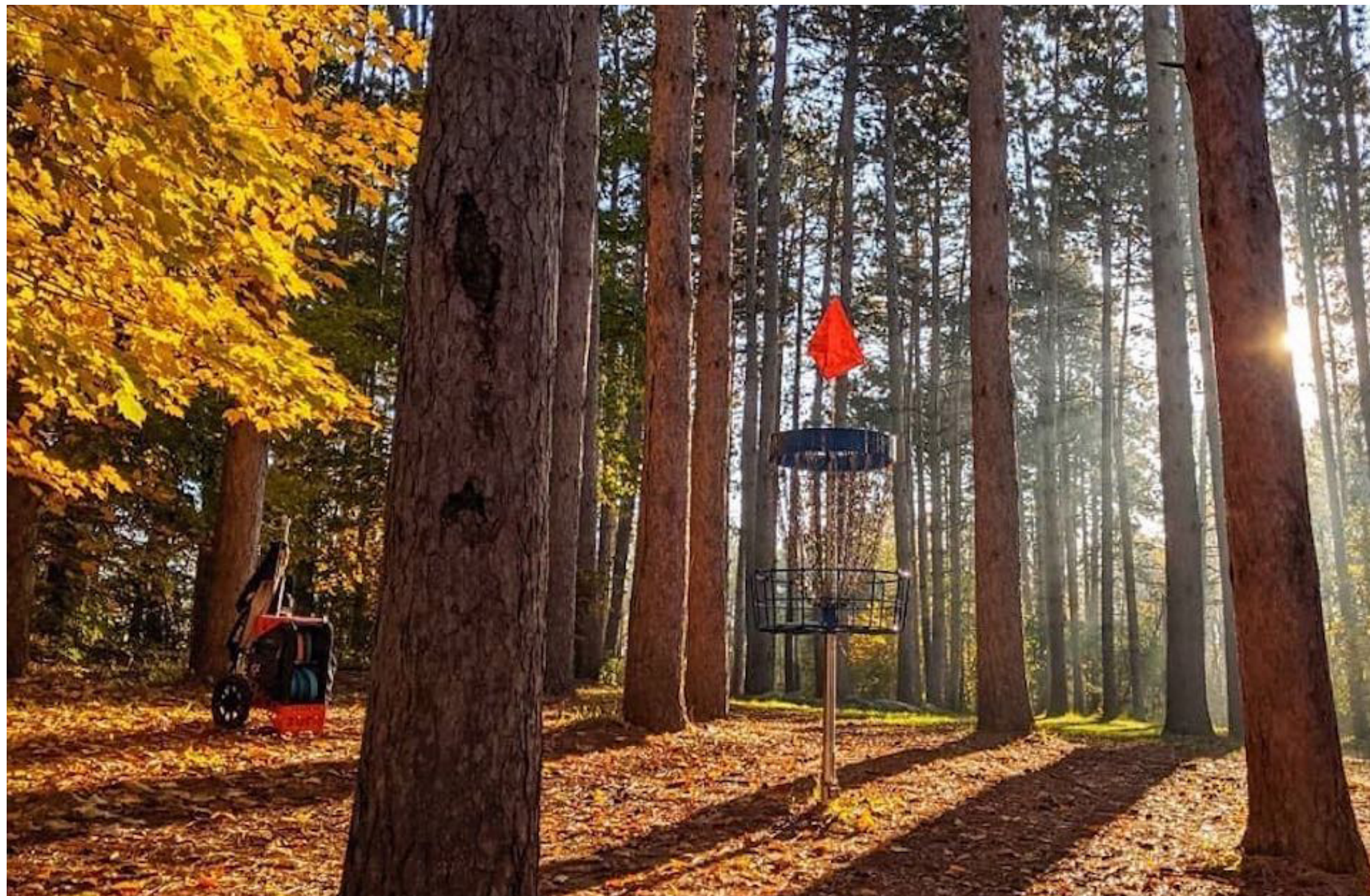
STAGE + EVENT LAWN



MEADOW MOUNDS + TRAILS



BIKE PUMP TRACK



DISC GOLF





# TASK FORCE ACTIVITY



## A DAY AT THE PARK

### THINGS TO CONSIDER:

- ARRIVAL EXPERIENCE
- SPECIAL EVENTS
- RECREATION ACTIVITIES
- IS THIS A FAMILY OUTING, SOLO OUTING, OR GROUP MEET-UP?
- DOES THE PARK HAVE ACTIVITIES THAT APPEAL TO EVERYONE IN YOUR GROUP?
- ARE THERE MISSING FEATURES THAT WOULD IMPROVE YOUR EXPERIENCE?





# NEXT STEPS

- COMPLETED PROGRESS:
  - INVENTORY, DATA COLLECTION, & SITE ANALYSIS
  - TASK FORCE MEETING #1
  - PRELIMINARY RECREATION PRIORITIES LIST
  - THEMES & GUIDING PRINCIPLES
  - CONCEPT PLAN OPTIONS
  - TASK FORCE MEETING #2
- NEXT STEPS
  - ASSESS TASK FORCE INPUT
  - DRAFT MASTER PLAN
  - FACILITATE PUBLIC OPEN HOUSE - FEB
  - TASK FORCE MEETING #3 - FEB

