

CHARLES COUNTY RECREATION, PARKS, & TOURISM

PROJECT PLANNING VOLUNTEER TASK FORCE
MEETING #1- SEPTEMBER 19, 2022





CHARLES COUNTY, MARYLAND DEPT. OF RECREATION, PARKS, & TOURISM



DESIGN CONSULTANTS

- LA PLATA FARM PARK
- POPES CREEK WATERFRONT PARK

DESIGN CONSULTANTS

- WALDORF PARK



COUNTY WIDE PARK PLANNING PROCESS

PARK PLANNING VOLUNTEER TASK FORCE

PARK MASTER PLANNING

LA PLATA FARM PARK

WALDORF PARK

POPES CREEK WATERFRONT PARK

QUALITIES OF GREAT PARKS

TASK FORCE ACTIVITY

NEXT STEPS

COUNTY-WIDE PARK PLANNING



- PARK AND RECREATION FACILITIES
- ACTIVE AND PASSIVE USES, LINEAR NETWORKS
- GEOGRAPHICAL DISTRIBUTION
- DIVERSITY OF AMENITIES / PROGRAMS
- ATTENTIVE TO A SPECTRUM OF USERS AND THEIR PREFERENCES
- COUNTY IDENTITY AND VALUES; RESPONDS TO NEEDS AND PRIORITIES

LAND PRESERVATION PARK AND RECREATION PLAN VISION STATEMENT:

CHARLES COUNTY IS A PLACE WHERE ALL PEOPLE THRIVE, AND BUSINESSES GROW AND PROSPER; WHERE THE PRESERVATION OF OUR HERITAGE AND ENVIRONMENT IS PARAMOUNT; WHERE GOVERNMENT SERVICES TO ITS CITIZENS ARE PROVIDED AT THE HIGHEST LEVEL OF EXCELLENCE; AND WHERE THE QUALITY OF LIFE IS THE BEST IN THE NATION.

PARK PLANNING TASK FORCE



- THREE MEETING COMMITMENT
- ADVISORY ROLE TO CONSIDER THE INTERESTS OF THE ENTIRE COUNTY AND WHAT IS BEST FOR ALL RESIDENTS
- SHARE INFORMATION WITH NEIGHBORS, FAMILY, FRIENDS, AND OTHER COMMUNITY MEMBERS THAT RESIDE IN CHARLES COUNTY AND INVITE THEM TO PARTICIPATE

CHARLES COUNTY IS COMMITTED TO AN
INCLUSIVE PARK PLANNING PROCESS

“WE HAVE A PARK FOR YOU”

**CHARLES COUNTY RECREATION, PARKS & TOURISM
PROJECT PLANNING VOLUNTEER TASK FORCE - MEETING #1**





MEET THE TASK FORCE MEMBERS

**CHARLES COUNTY RECREATION, PARKS & TOURISM
PROJECT PLANNING VOLUNTEER TASK FORCE - MEETING #1**





PARK MASTER PLANNING PROCESS

**CHARLES COUNTY RECREATION, PARKS & TOURISM
PROJECT PLANNING VOLUNTEER TASK FORCE - MEETING #1**

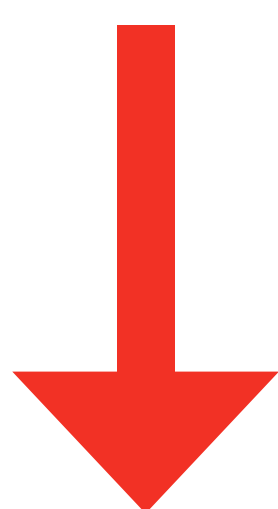




SITE SPECIFIC PLANNING

CONTEXT, INVENTORY & ASSESSMENT

- PHYSICAL CONDITIONS
- ENVIRONMENTAL RESOURCES & PROTECTIONS
- VIEWSHEDS
- EXISTING STRUCTURES & INFRASTRUCTURE
- TRANSPORTATION NETWORKS & ACCESS
- SOCIAL, HISTORIC & CULTURAL INFLUENCES



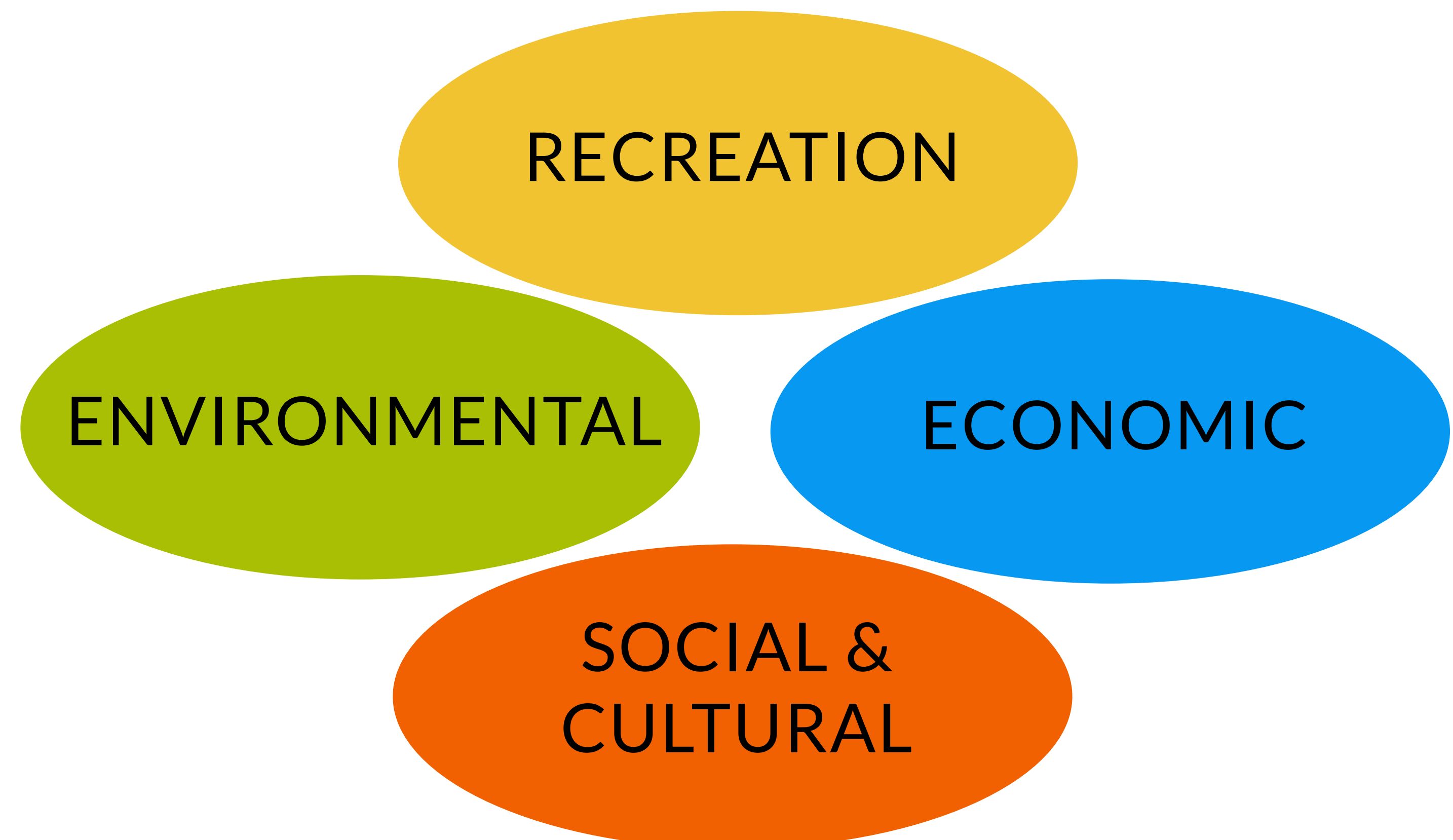
OPPORTUNITIES + CHALLENGES





VISION & THEMES

- ESTABLISH A VISION & THEME FOR EACH PARK
- ASSESS COMMUNITY VALUES, NEEDS, AND PRIORITIES
- DEFINE A SET OF GUIDING PRINCIPLES THAT BECOMES A ROAD MAP FOR CONCEPT DESIGN AND THE PARK MASTER PLAN



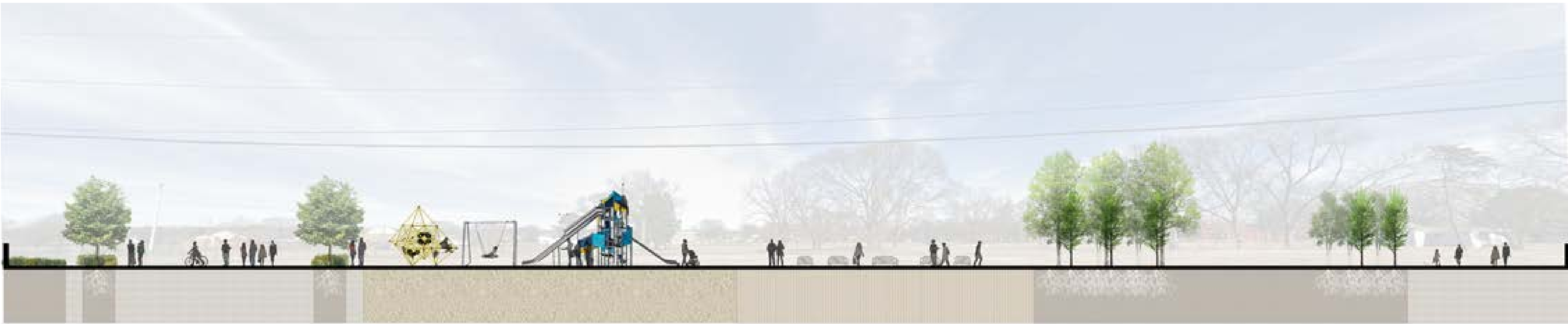
CONCEPT PLAN ITERATIVE PROCESS



CONCEPT PLAN ITERATIVE PROCESS



Figure 10: Shuttlesworth Civil Rights Park Concept Master Plan



Event Plaza Play Equipment Outdoor Classroom and Open Lawn Witness Trees and Memorial Grove

Figure 11: Section A - A



CONCEPT PLAN ITERATIVE PROCESS

POP-UP EVENTS



Birmingham Farmer's Market
Photo credit: Beth Cunningham



Cinema in the Park
Photo credit: Tom Leader Studio



Concerts & Performances
Photo credit: Halvorson Design Partnership

PARK ACTIVITIES



Fitness Stations



Children's Play Equipment



Exercise Classes



Figure 12: Activity Use Diagram

Active Uses

- Walking
- Community Gardens
- Fitness Stations
- Children's Play Equipment
- Outdoor Classroom
- Concerts / Performances
- Pop-up Events / Farmers' Market / Exercise Classes

Passive Uses

- Open Lawn / Free Play
- Outdoor Cinema
- Picnics
- Shaded Seating & Swing
- Art Installations
- Historic & Educational Signage

Environmental Uses

- Memorial Tree Grove
- Bioretention Facilities
- Meadow Habitat

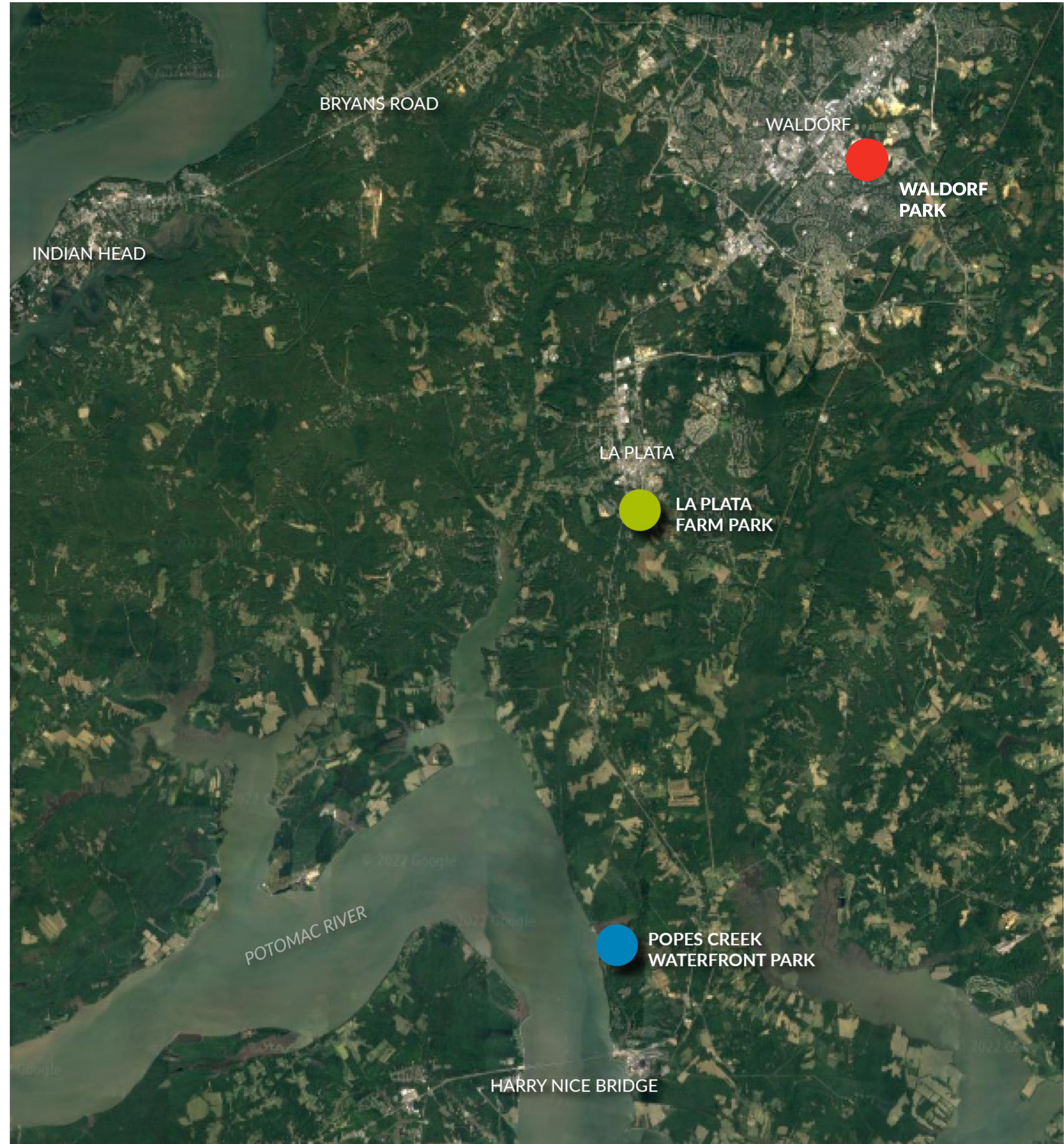


PROJECT SPECIFIC PRIORITIES & THEMES



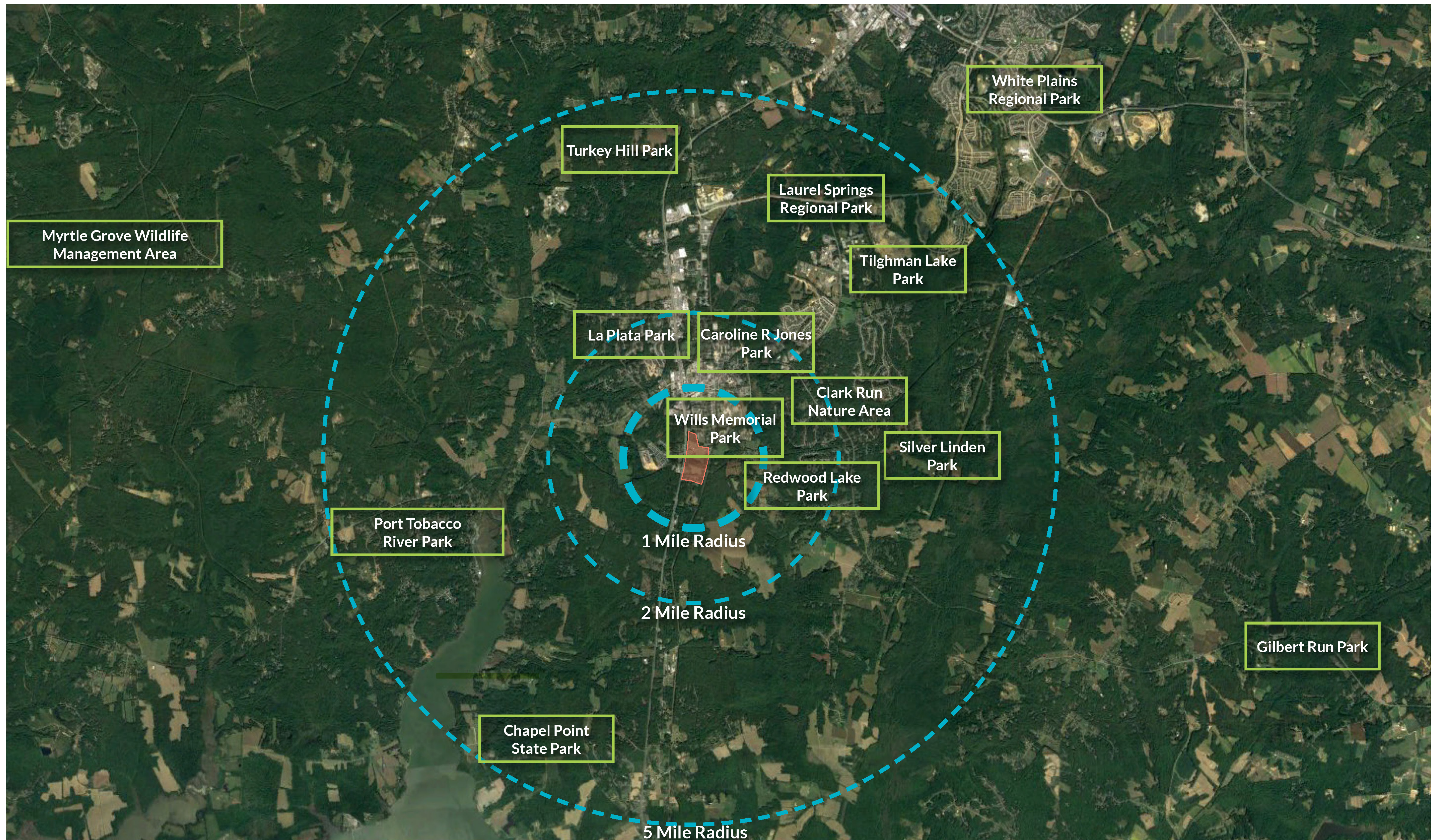
**CHARLES COUNTY RECREATION, PARKS & TOURISM
PROJECT PLANNING VOLUNTEER TASK FORCE - MEETING #1**





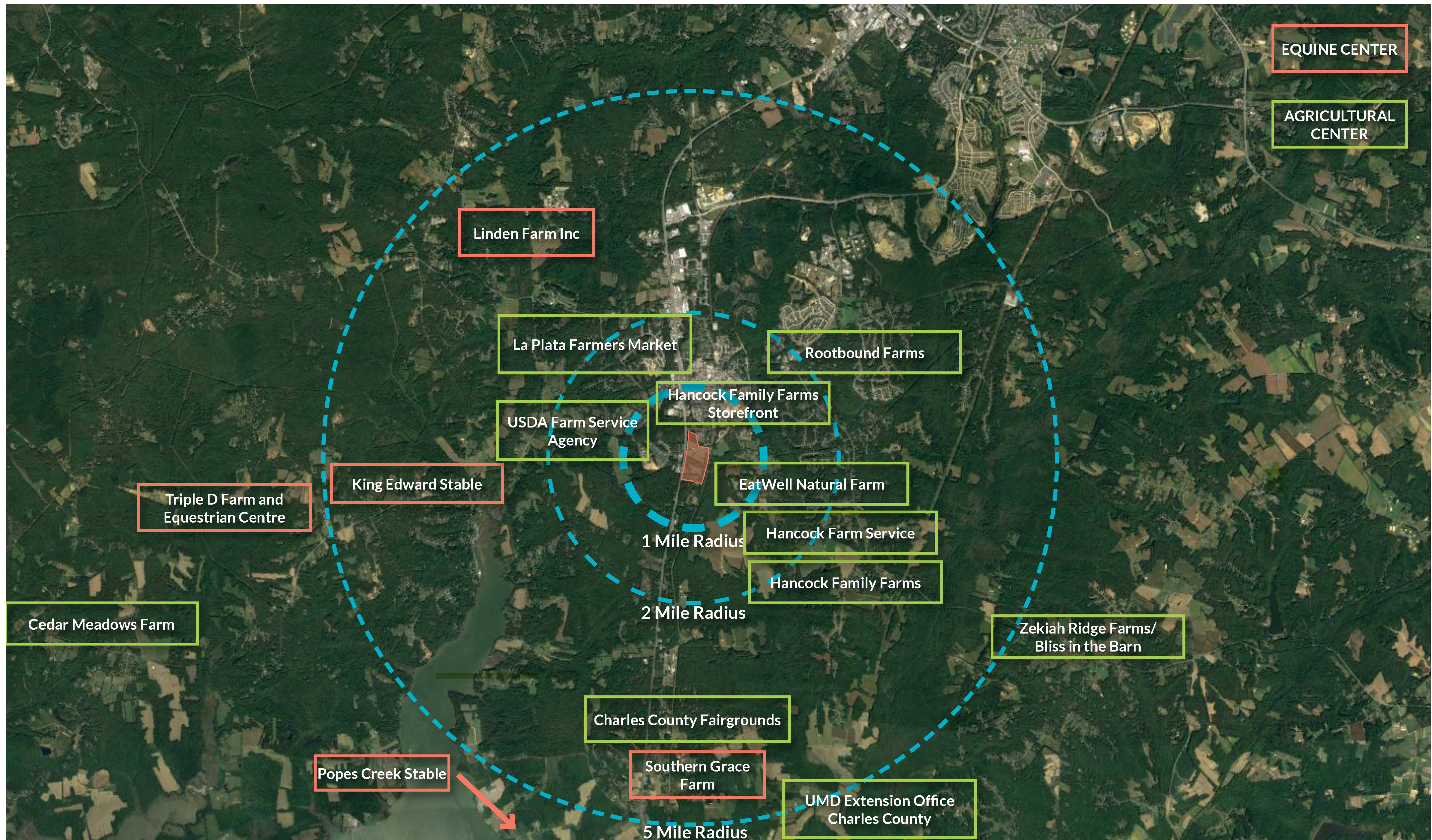
LA PLATA FARM PARK





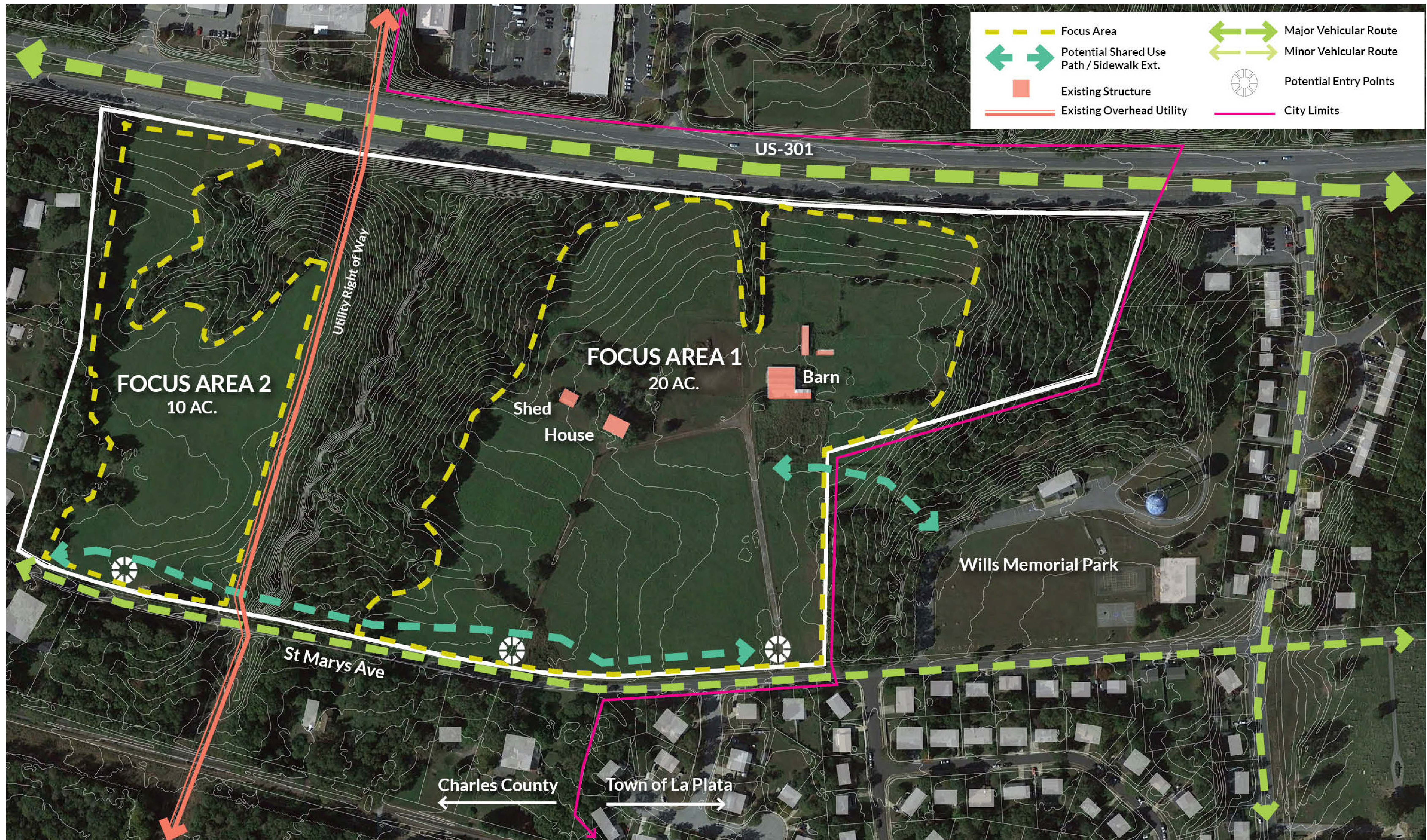
CHARLES COUNTY RECREATION, PARKS & TOURISM PROJECT PLANNING VOLUNTEER TASK FORCE - MEETING #1





CHARLES COUNTY RECREATION, PARKS & TOURISM PROJECT PLANNING VOLUNTEER TASK FORCE - MEETING #1



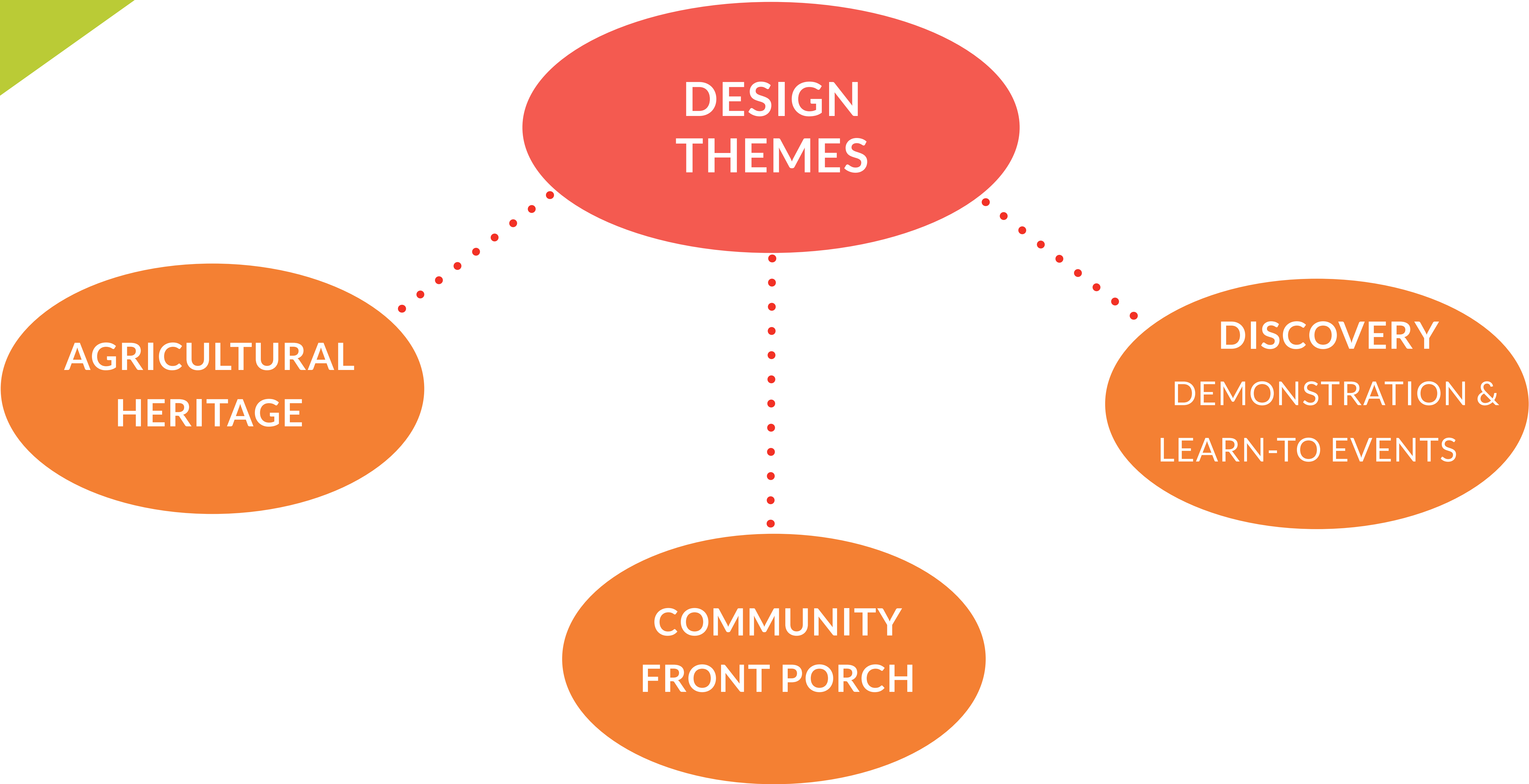


CHARLES COUNTY RECREATION, PARKS & TOURISM PROJECT PLANNING VOLUNTEER TASK FORCE - MEETING #1





LA PLATA FARM PARK



LA PLATA FARM PARK - BIG IDEAS

FARM FIELD DAY -
ANIMAL DEMONSTRATIONS



FARM THEMED SPLASHPAD



COMMUNITY PAVILION



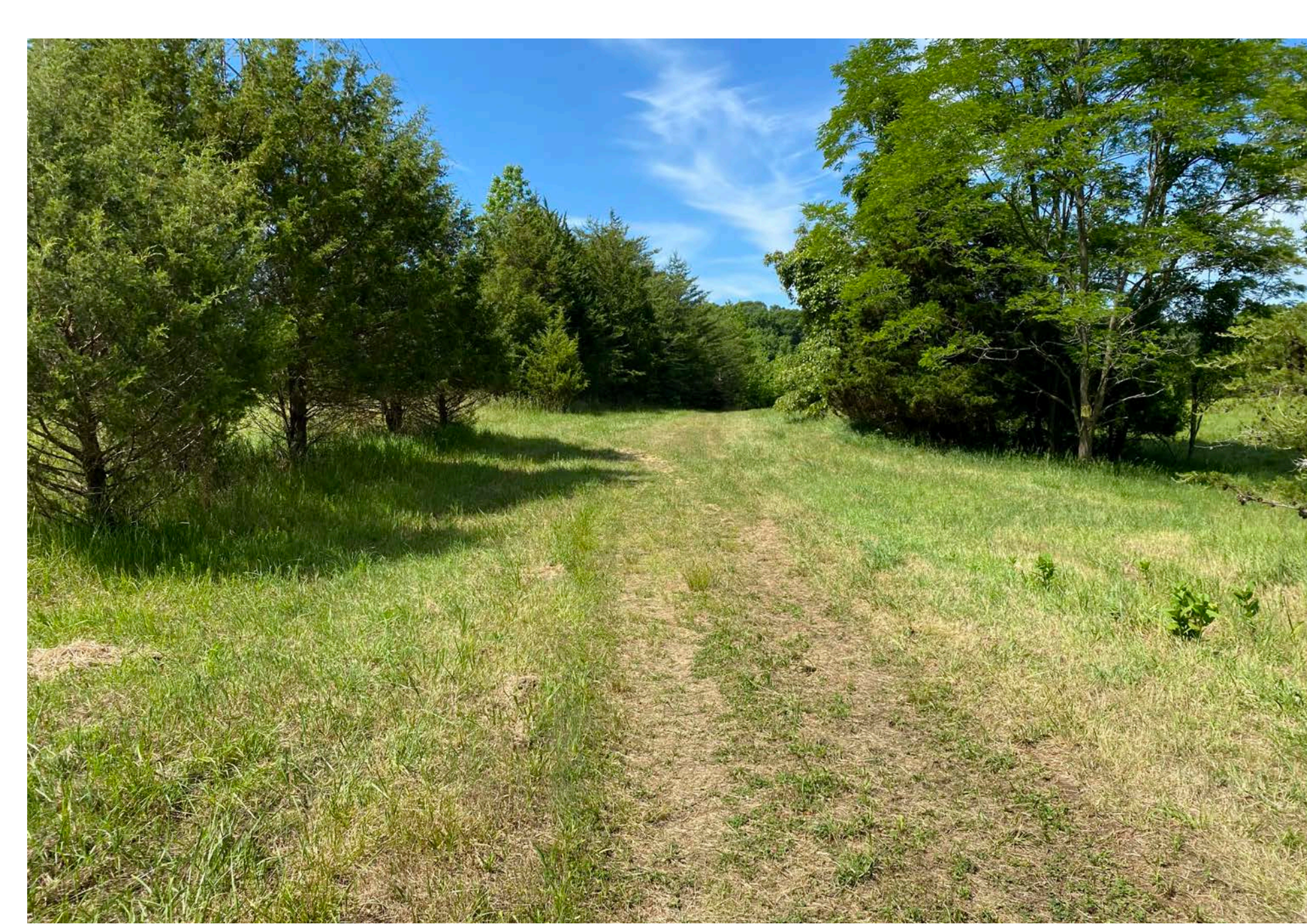
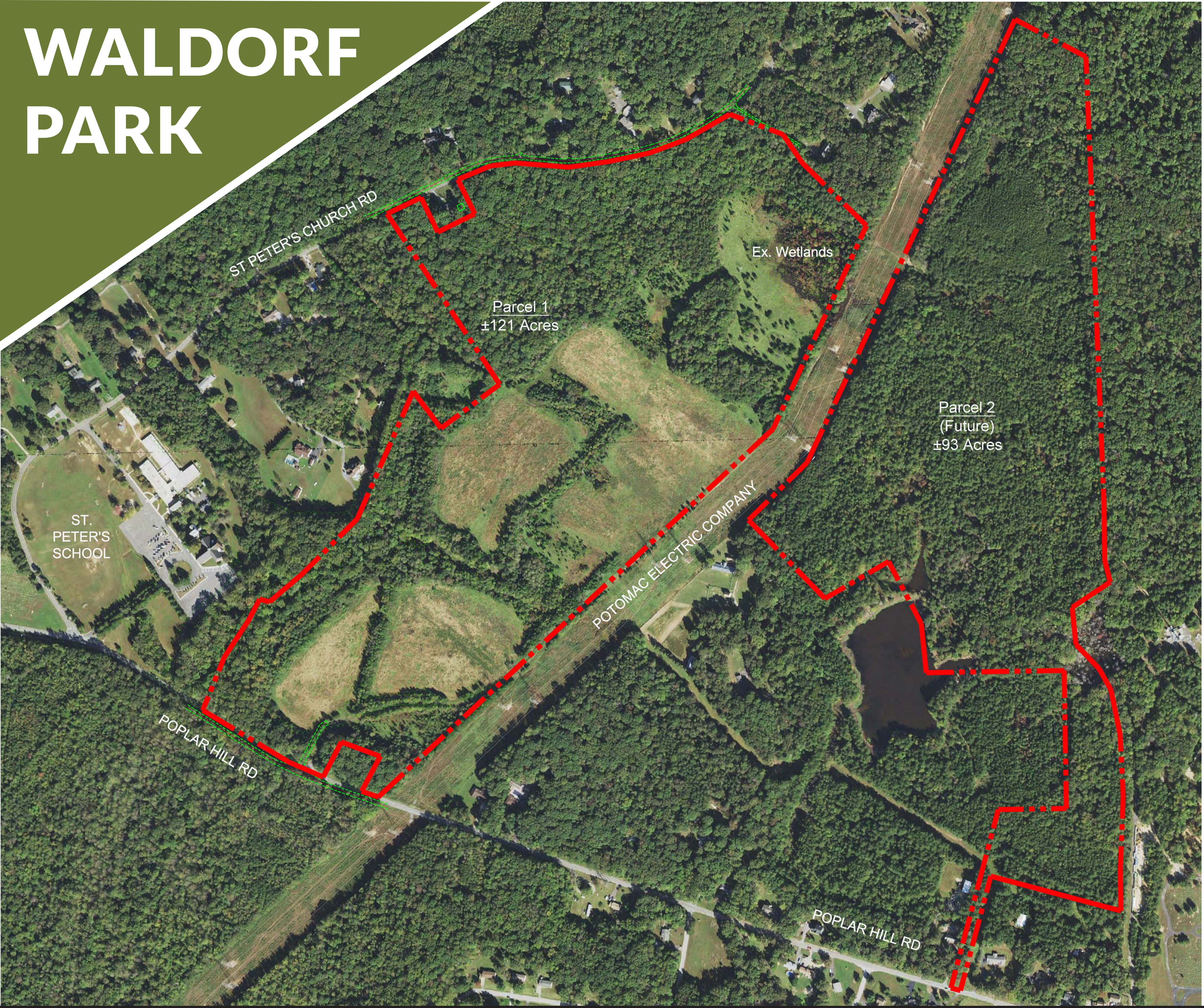
BIKE TRAIL CIRCUIT &
PUMP TRACK

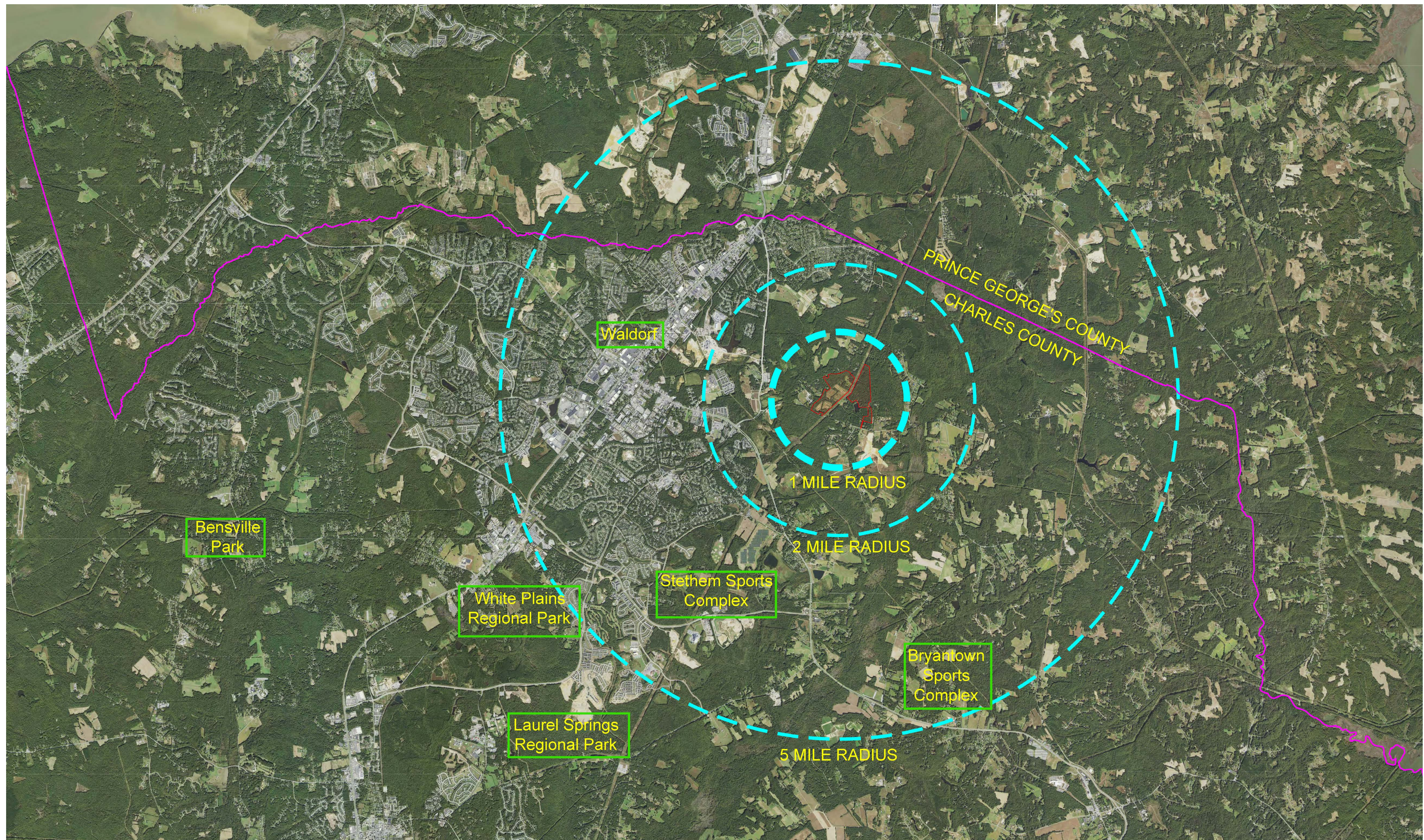


FARM THEMED PLAYGROUND



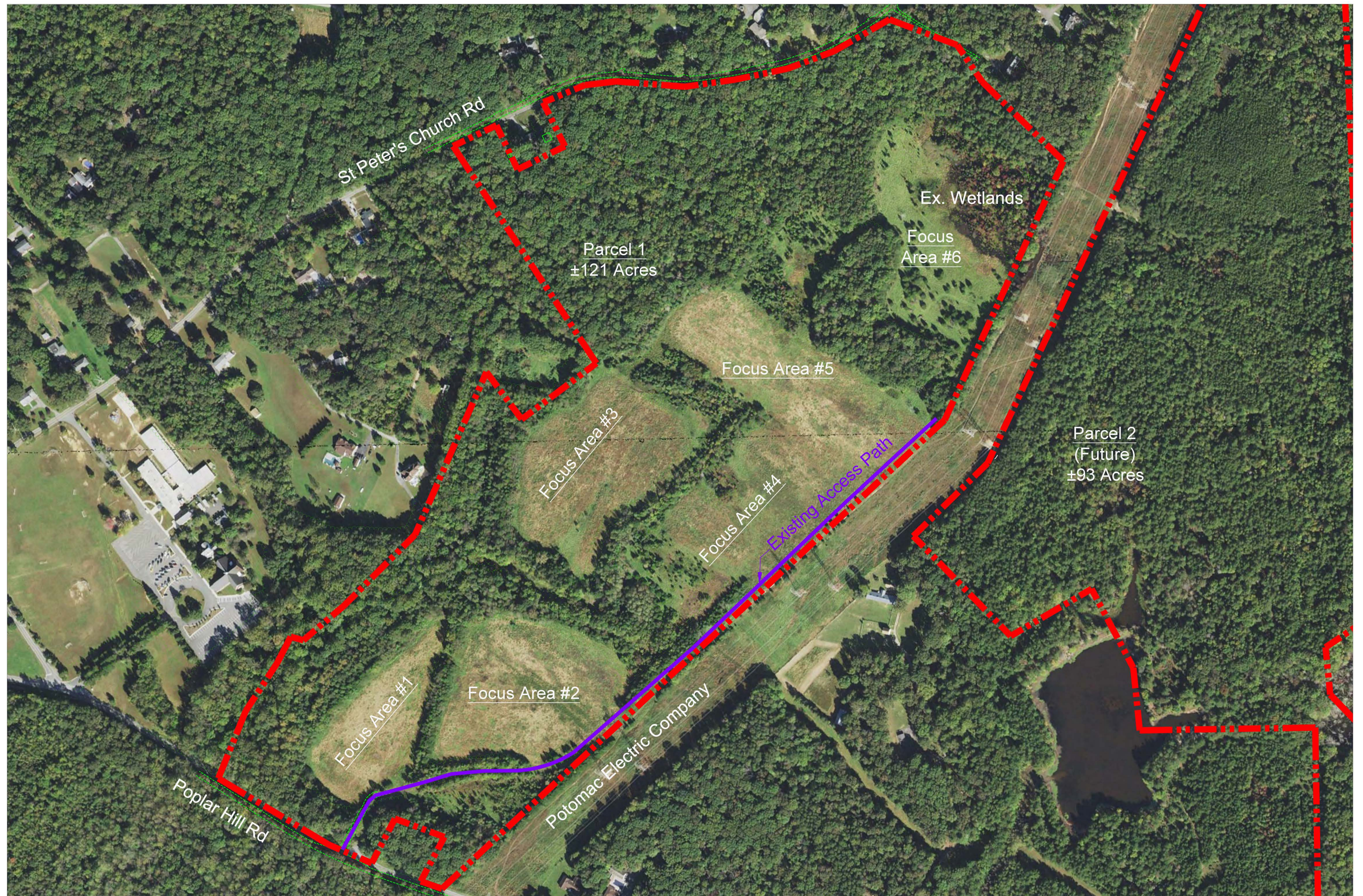
WALDORF PARK





CHARLES COUNTY RECREATION, PARKS & TOURISM PROJECT PLANNING VOLUNTEER TASK FORCE - MEETING #1



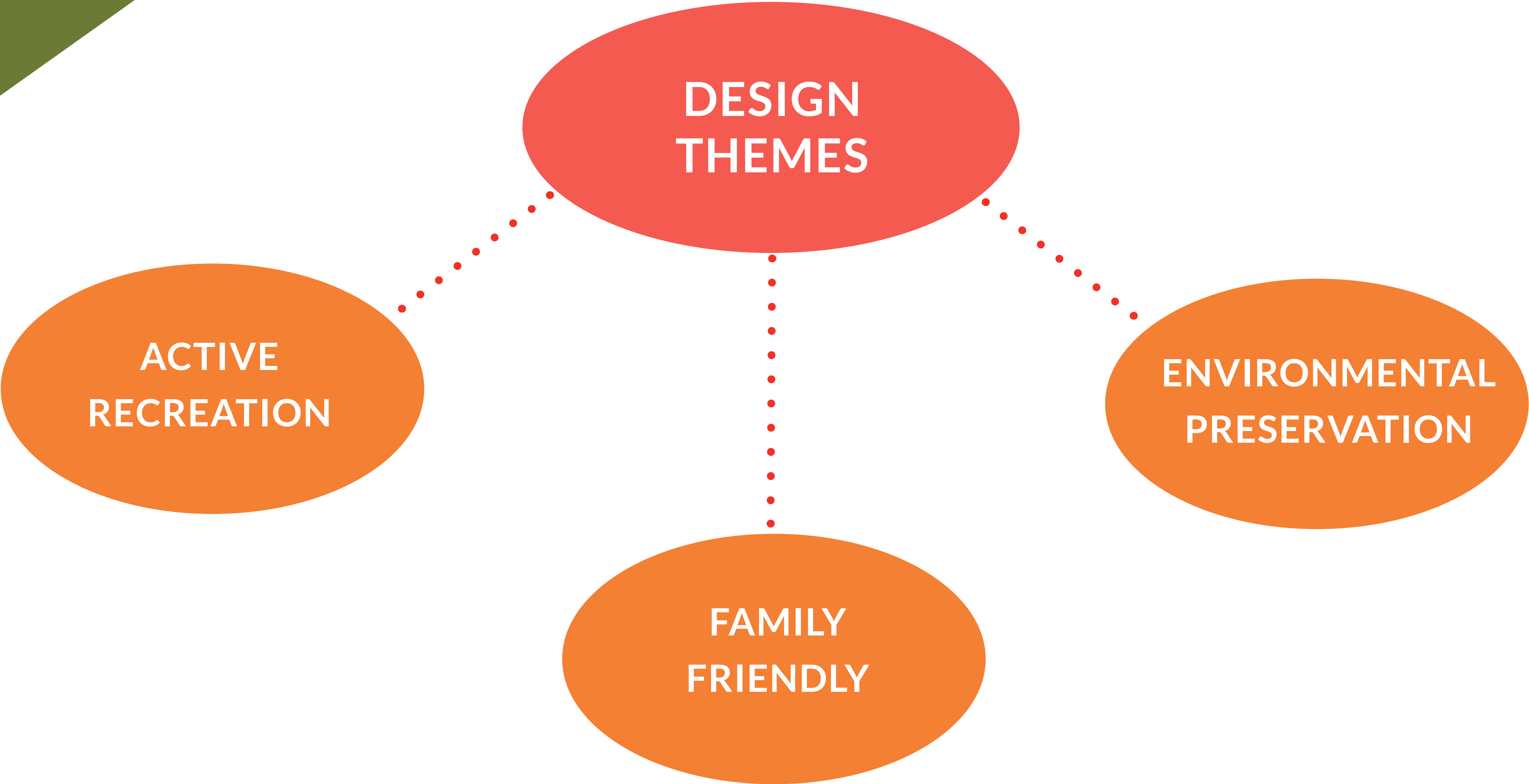


CHARLES COUNTY RECREATION, PARKS & TOURISM PROJECT PLANNING VOLUNTEER TASK FORCE - MEETING #1





WALDORF PARK





WALDORF PARK - BIG IDEAS

AGE SPECIFIC
PLAYGROUNDS

RENTABLE
PAVILIONS

FOREST &
WETLAND
PRESERVATION

GRASSED
ATHLETIC FIELDS

CONCESSION FACILITIES
WITH RESTROOMS

AMPLE
PARKING

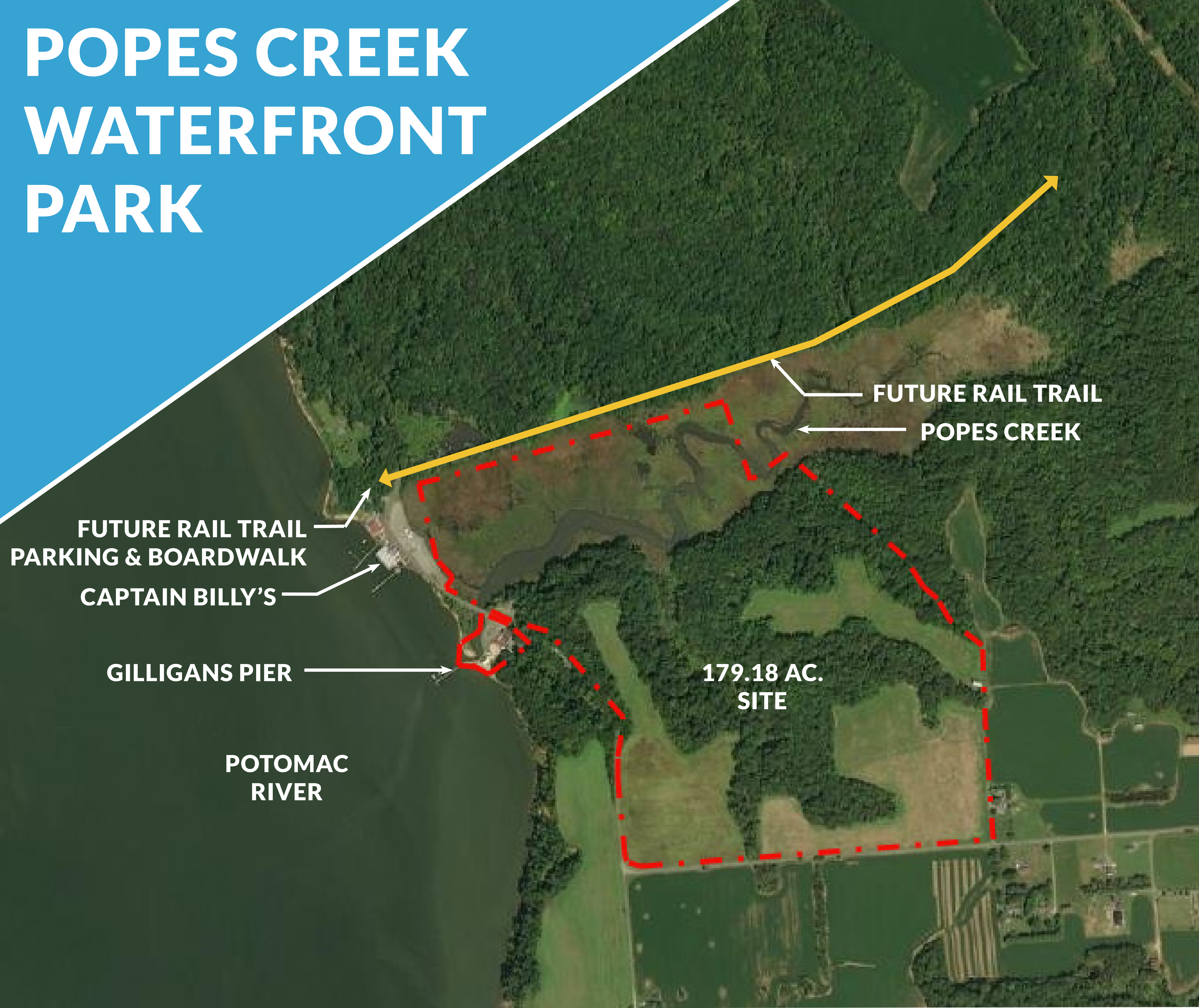
BASKETBALL / TENNIS /
PICKLEBALL COURTS

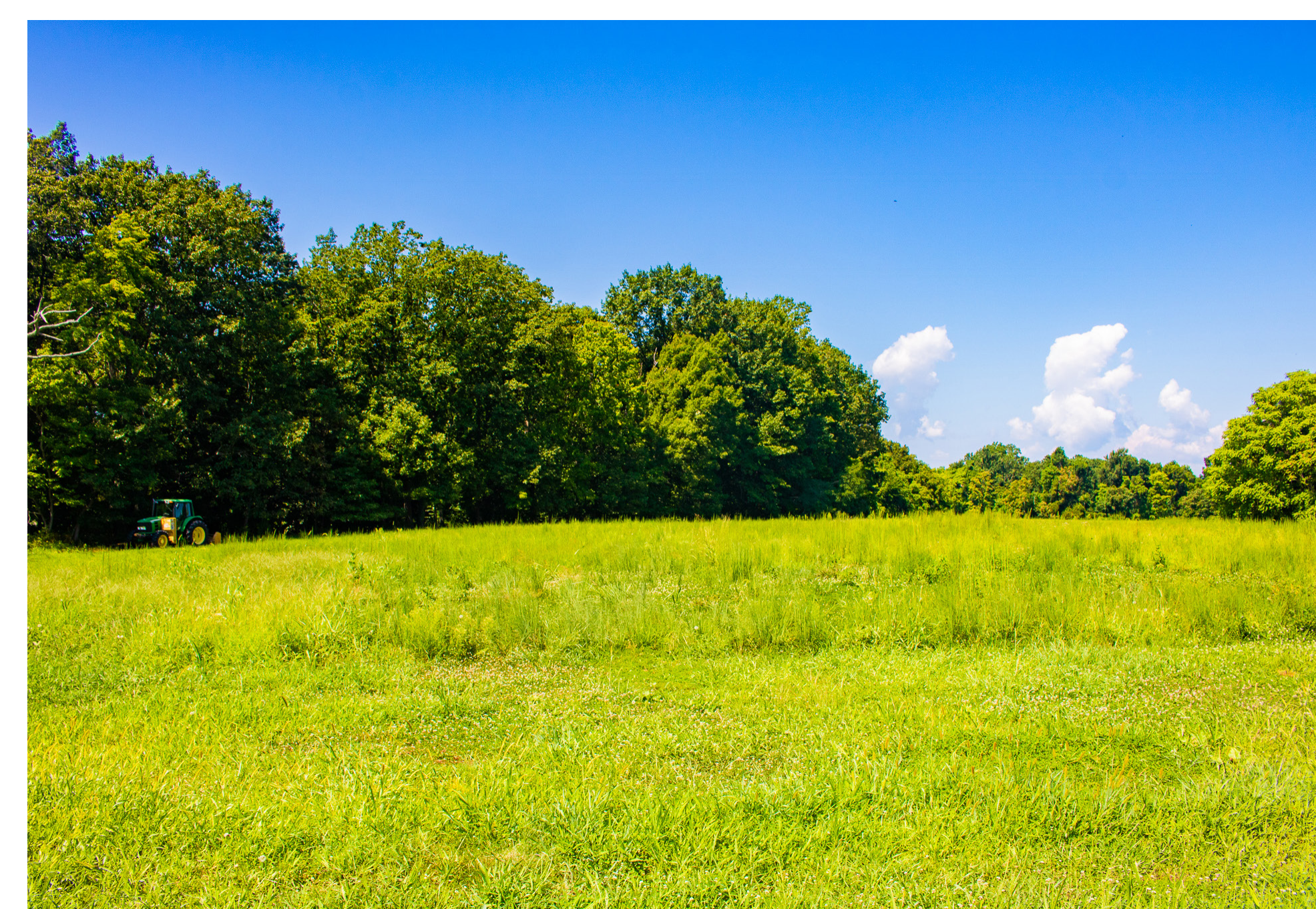
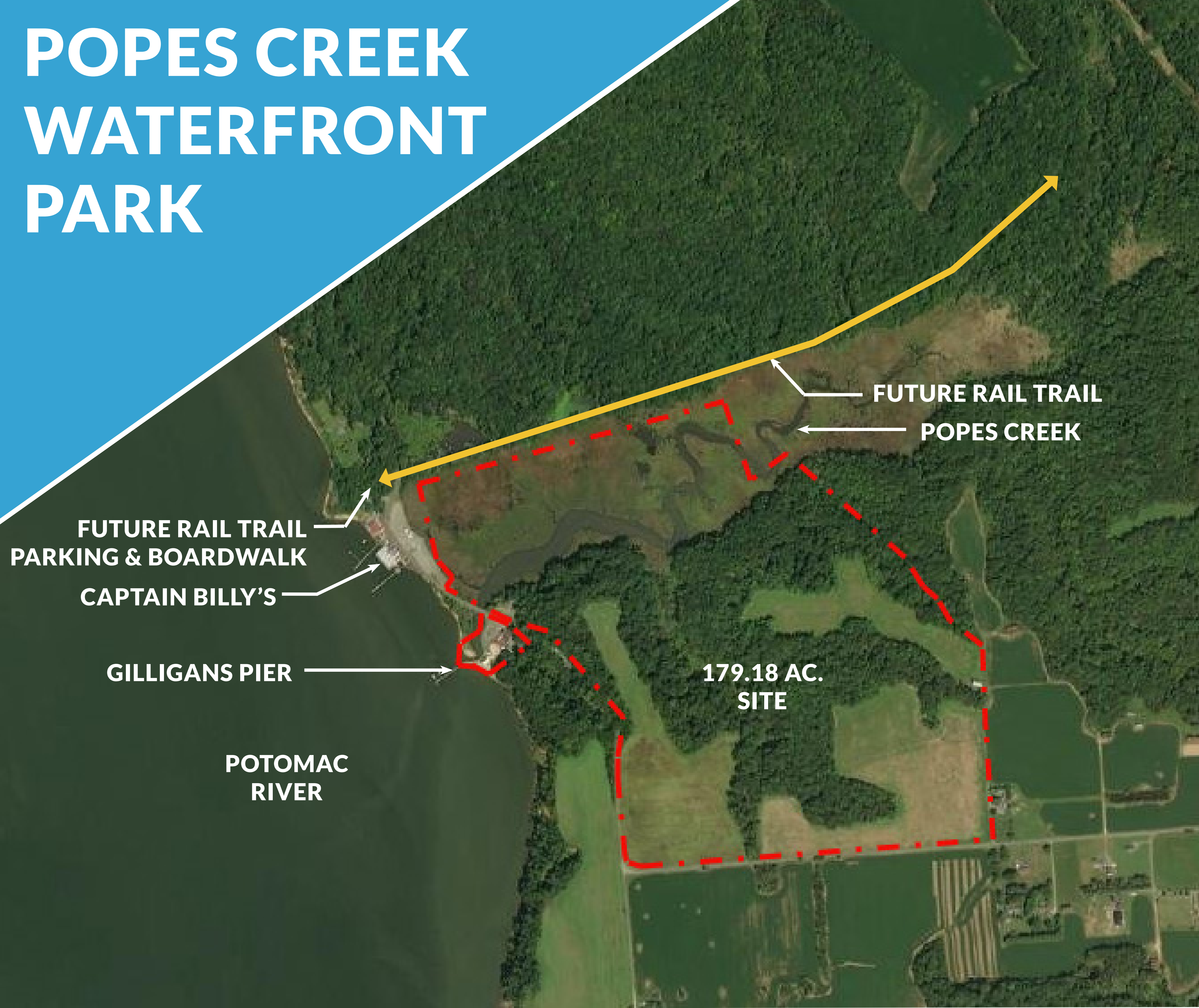
TURF FOOTBALL
FIELDS

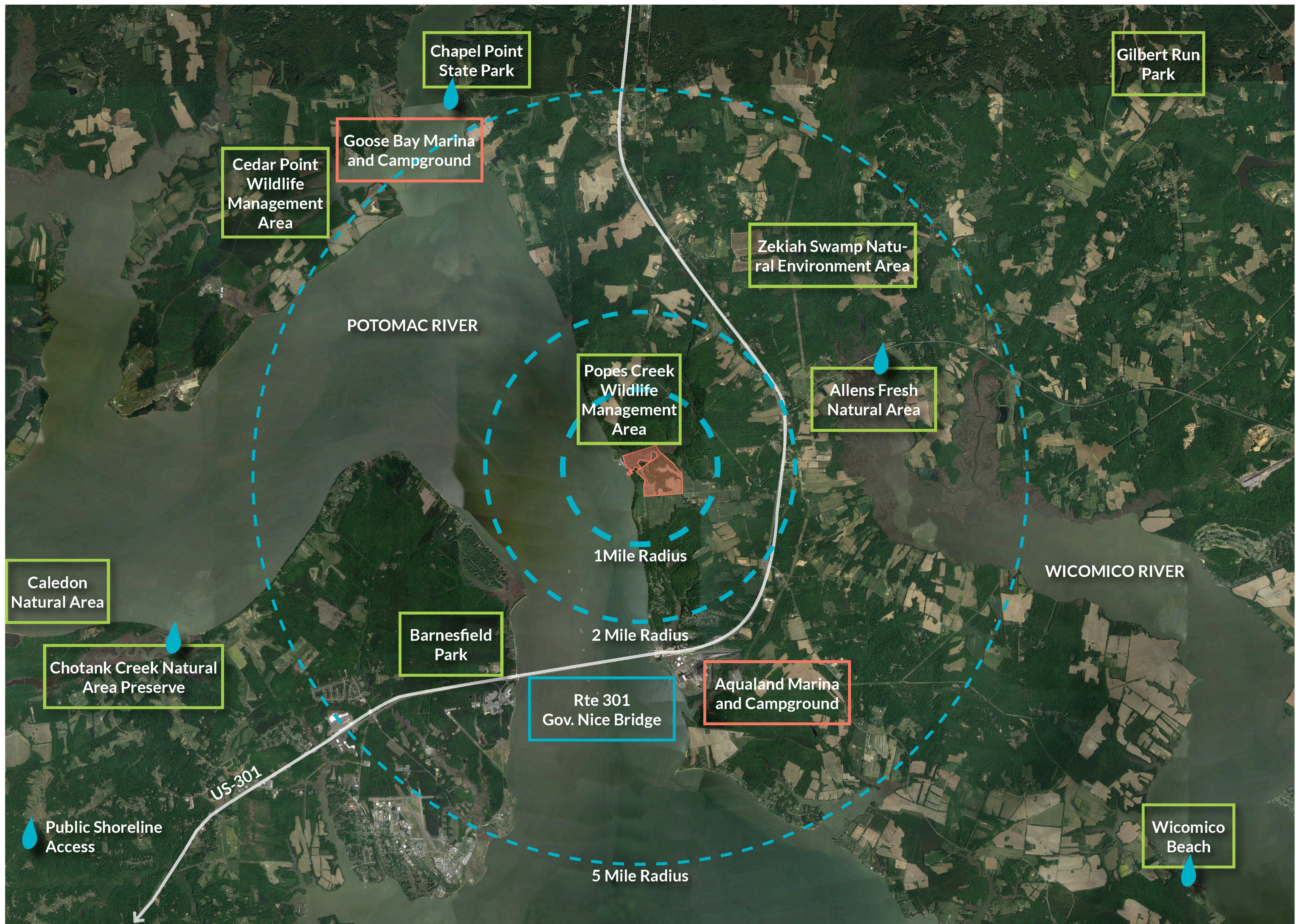
CROSS-COUNTRY
NATURE TRAILS



POPES CREEK WATERFRONT PARK

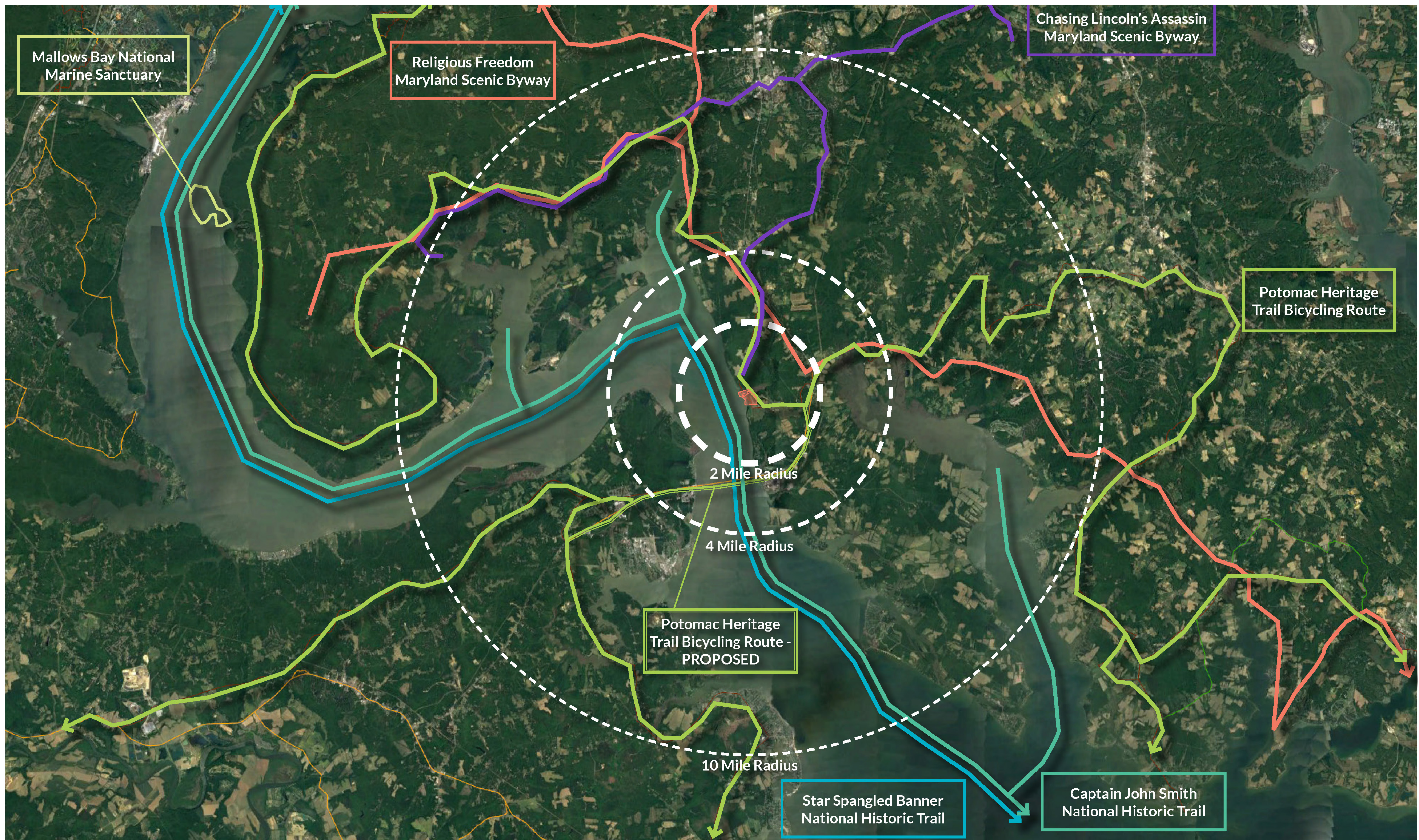






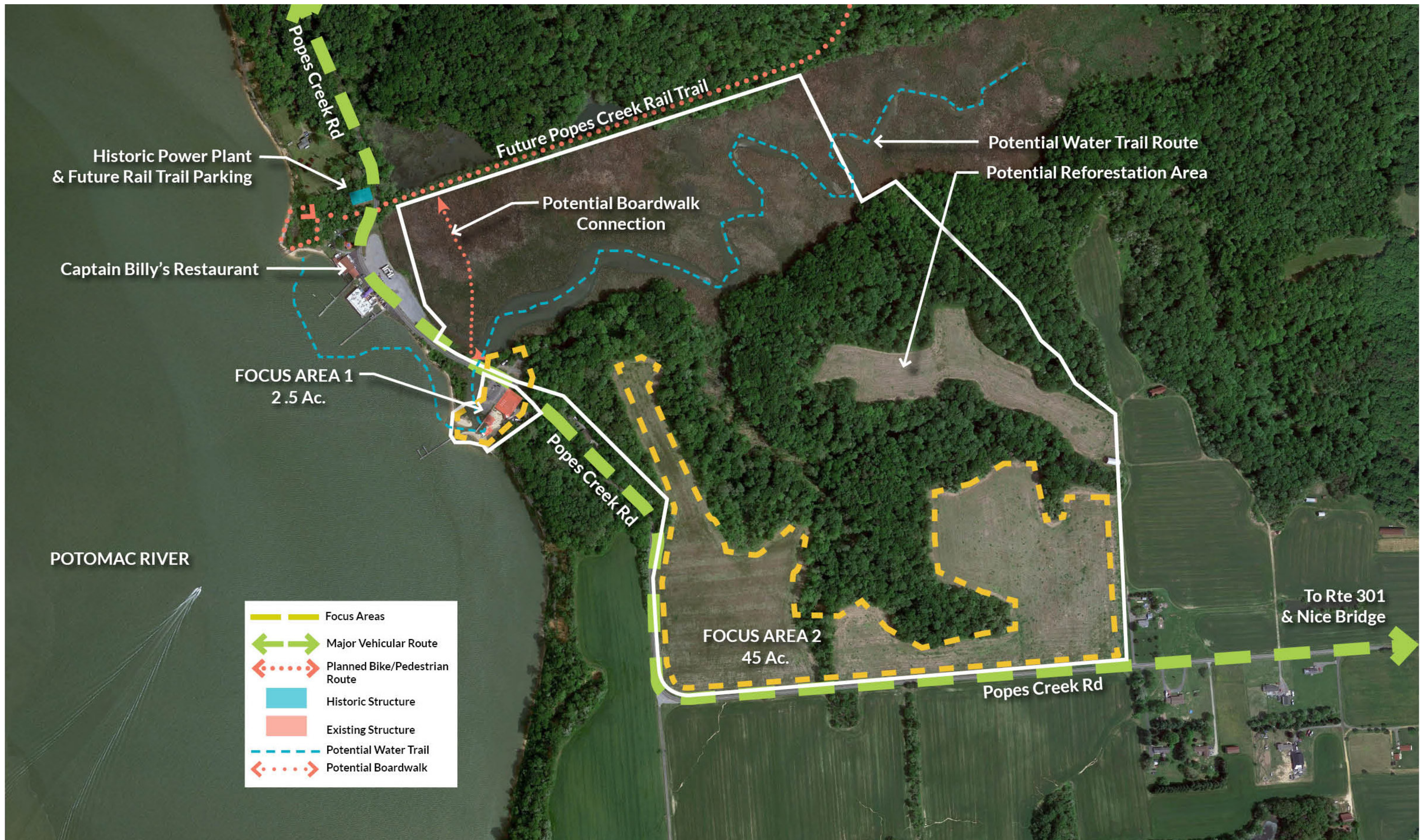
**CHARLES COUNTY RECREATION, PARKS & TOURISM
PROJECT PLANNING VOLUNTEER TASK FORCE - MEETING #1**





CHARLES COUNTY RECREATION, PARKS & TOURISM PROJECT PLANNING VOLUNTEER TASK FORCE - MEETING #1





CHARLES COUNTY RECREATION, PARKS & TOURISM PROJECT PLANNING VOLUNTEER TASK FORCE - MEETING #1



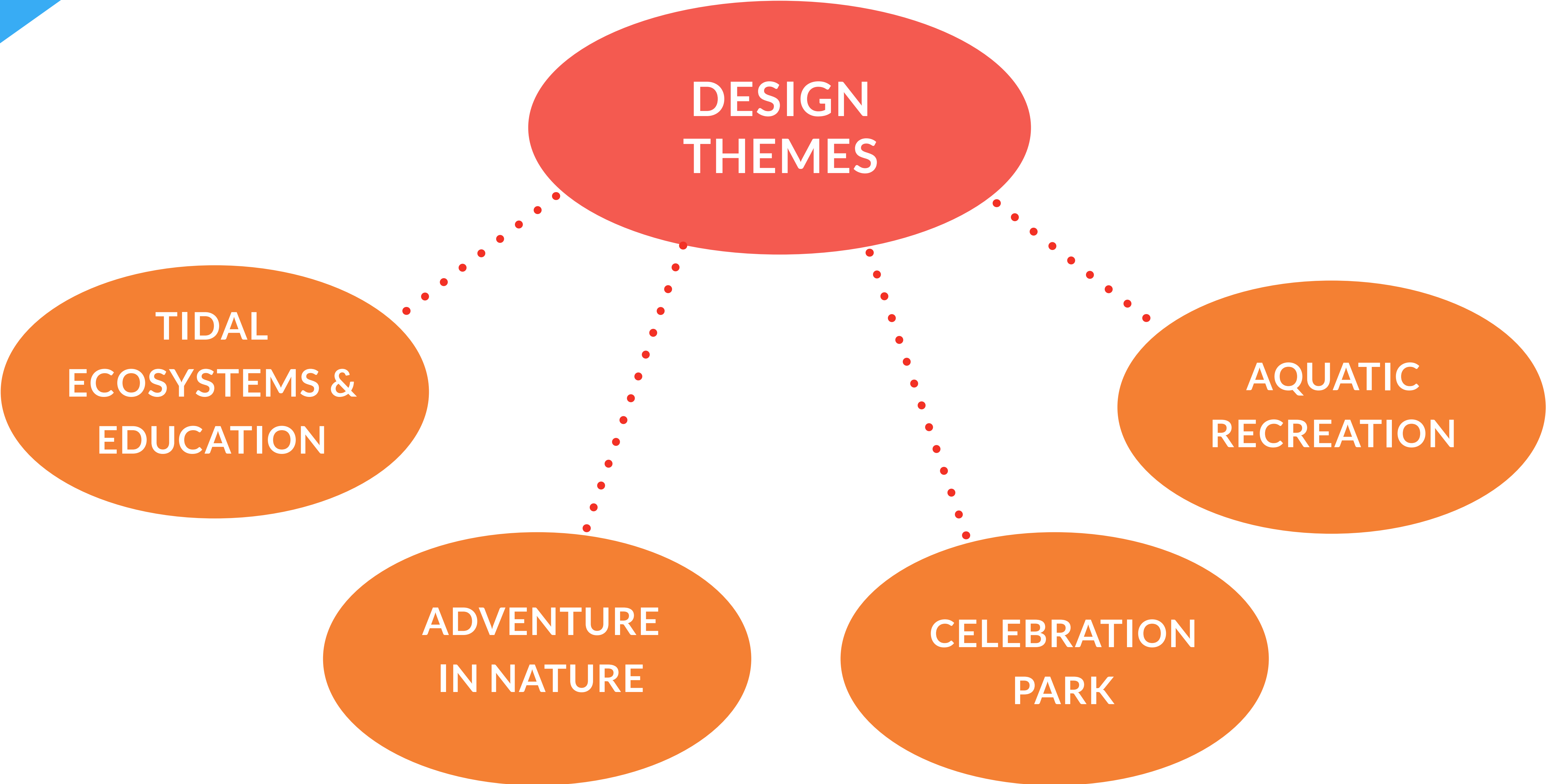


CHARLES COUNTY RECREATION, PARKS & TOURISM PROJECT PLANNING VOLUNTEER TASK FORCE - MEETING #1





POPES CREEK WATERFRONT PARK



POPES CREEK WATERFRONT PARK - BIG IDEAS

TREE HOUSE/
OBSERVATION TOWER



PUBLIC WATERFRONT



NATURE PLAY



EQUESTRIAN TRAIL /
CAMPING



WATERFRONT STAGE & PAVILION





QUALITIES OF GREAT PARKS

**CHARLES COUNTY RECREATION, PARKS & TOURISM
PROJECT PLANNING VOLUNTEER TASK FORCE - MEETING #1**





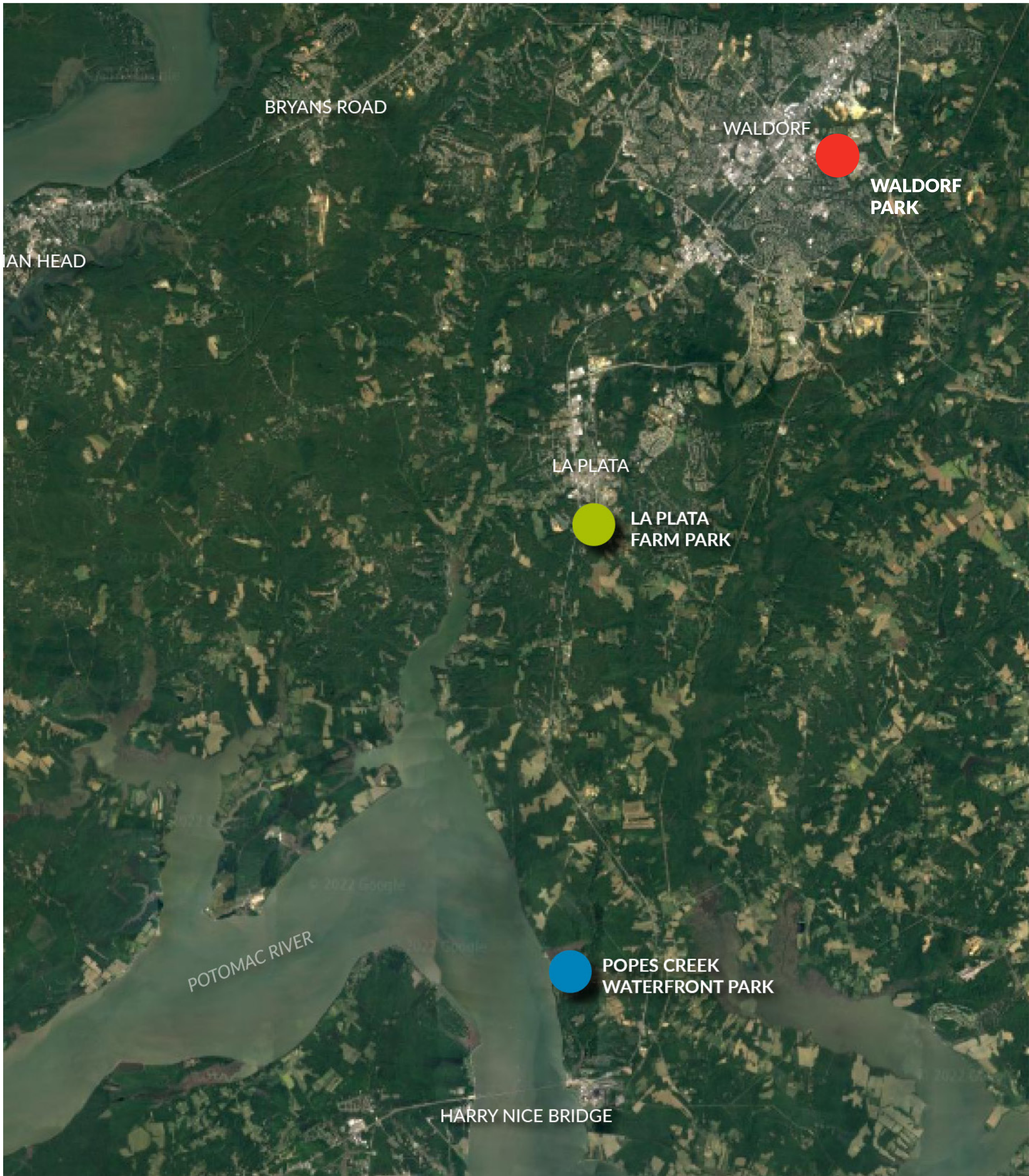
QUALITIES OF GREAT PARKS

- SAFE AND ACCESSIBLE FOR ALL USERS
- POSITIVE, ENGAGING, AND MEMORABLE EXPERIENCES
- FLEXIBLE AND ADAPTABLE
- ACTIVITIES FOR ALL AGE GROUPS
- RELEVANT TO THE COMMUNITIES THEY SERVE
- MAINTAINABLE AND CARED FOR



TASK FORCE ACTIVITY

PRIORITY
RECREATION &
PROGRAMMING??



NEXT STEPS



- COMPLETED PROGRESS:
 - INVENTORY, DATA COLLECTION, & SITE ANALYSIS
 - CONVENE TASK FORCE MEMBERS
 - TASK FORCE MEETING #1
- NEXT STEPS
 - REFINE VISION & THEMES
 - REFINE RECREATION & PROGRAMMING PRIORITIES LIST
 - IDENTIFY POTENTIAL PROGRAMMING PARTNERS
 - CONCEPT DESIGN DEVELOPMENT TWO FOR EACH PARK
 - TASK FORCE MEETING #2 - NOV.
 - ADDITIONAL PUBLIC ENGAGEMENT - TBD