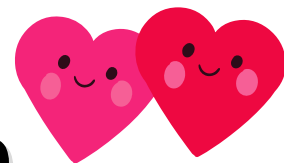


MONTHLY NEWSLETTER

MATTAWOMAN COMMUNITY CENTER



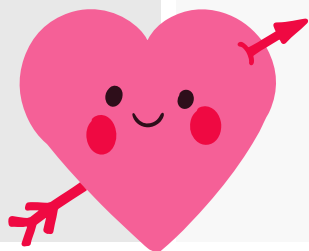
SPREAD THE LOVE • FEBRUARY 2026

WELCOME

CENTER STAFF

CONTACT US

THIS MONTH'S HIGHLIGHTS



SCAN ME TO REGISTER FOR PROGRAMS, JOIN OUR
EMAIL LIST, AND CONNECT WITH US ONLINE!



Charles County Department of Recreation, Parks, and Tourism

107 Centennial St., Suite A, La Plata, MD 20646

301-932-3470 • MD Relay Service: 7-1-1 (TDD: 1-800-735-2258) • www.CharlesCountyParks.com



Equal Opportunity Employer

OUR FEBRUARY ACTIVITIES

CALENDAR KEY

| SUN | MON | TUE | WED | THU | FRI | SAT |
|-----|-----|-----|-----|-----|-----|-----|
| 25 | 26 | 27 | 28 | 29 | 30 | 31 |
| 1 | 2 | 3 | 4 | 5 | 6 | 7 |
| 8 | 9 | 10 | 11 | 12 | 13 | 14 |
| 15 | 16 | 17 | 18 | 19 | 20 | 21 |
| 22 | 23 | 24 | 25 | 26 | 27 | 28 |

Pre-School Prom

Friday, February 13
Somers Community Center

6:30pm • Ages 2-6
Residents: \$20 • Non-Residents: \$25

